

# la belle époque

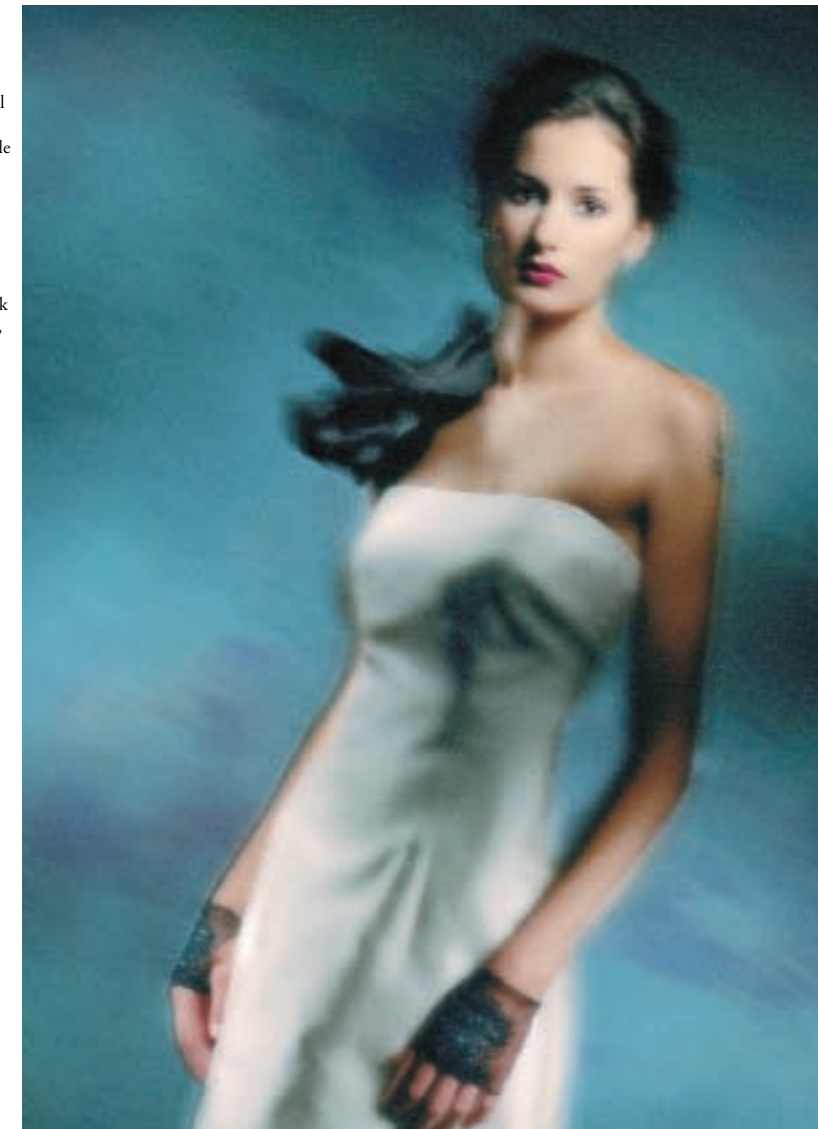
it is the season of epic style

Opulent embellishments and indulgent fabrics usher in an era of pure glamour. Infused shades of green, champagne, blue and coral revive the bridal palette. Black makes a dramatic entrance in accessories worn with pure white. Sheer fantasy sets the tone in designs inspired by Louis XIV court intrigue.



**Opposite page:** Pale green satin gown by Reem Acra with gold and white lace embroidery and romantic off-the-shoulder cut, \$4600, from Dayton's. Necklace in antique gold with vintage Swarovski crystal and semi-precious stones custom designed by St. Paul artist Inna Valin, \$390, available at Amy Jane Bridal or Inna Valin Couture Beadwork, 651-290-0031.

**This page:** Strapless A-line gown in silk mikado by Carmela Su Tera, \$1498, from Bridals by Joanne is paired with a black silk poppy by Dulken & Derrick in New York, 212-929-3614. Square rhinestone earrings by Swarovski Jewelry, \$85, from Dayton's. Gloves are stylist's own.







**Opposite page, on left:** Rena Koh satin A-line with crystal beaded net bodice, spaghetti straps and organza overlay train, \$1498, from Bridals by Joanne. Carolee faux diamond earrings (shown as hair clips), \$100, from Dayton's. Earrings are stylist's own. **On right:** Rena Koh satin A-line with spaghetti straps and crystal beadwork on entire gown, \$1498, from Bridals by Joanne. Pearl and faux diamond earrings by Swarovski Jewelry, \$45, from Dayton's.

**This page:** Svelte Monique Lhuillier bias-cut gown with low back and halter cowl in silk crepe back satin, also available in evening colors, \$2800, from Dayton's. Silk flower bracelet by Dulken & Derrick in New York, 212-929-3614.





C

Hair and Make-Up

Models

Photo Assistants

Styling Assistants

Flowers

RENÉ RATTLER, RHONDA JACKSON, MARY PORTER, JON DAGG AND KRISTEN BAKER,  
MOORE CREATIVE TALENT

ADVA AND AIZHAN, MOORE CREATIVE TALENT. ELIZABETH, THE WEHMANN AGENCY.  
MONIQUE, VISION MINNEAPOLIS

CAMERON WITTIG AND CHIP STROEBEL

BRIDGET HAUGH AND MADELINE HUELSTER

BASTIAN \* SKOOG



**Opposite page:** Platinum blue Monique Lhuillier satin gown has a sultry scoop tank cut on top. Skirt is gathered unevenly and embellished in small rhinestones, \$4100, from Dayton's. Filigree and crystal mask by Swarovski Jewelry, \$375, from Dayton's. Schriener pearl and rhinestone earrings, \$64, from Finishing Touches Antiques & Design.

**This page:** Re-embroidered lace and crystal embellishment run the entire length of this fabulous light blue Reem Acra scoop-neck sheath, \$5700, from Dayton's. Silver choker with vintage Swarovski crystals, seed pearls, semi-precious and precious stones by Inna Valin, \$390, available at Amy Jane Bridal or Inna Valin Couture Beadwork, 651-290-0031.

