

# Heavy Duty Wheelchair

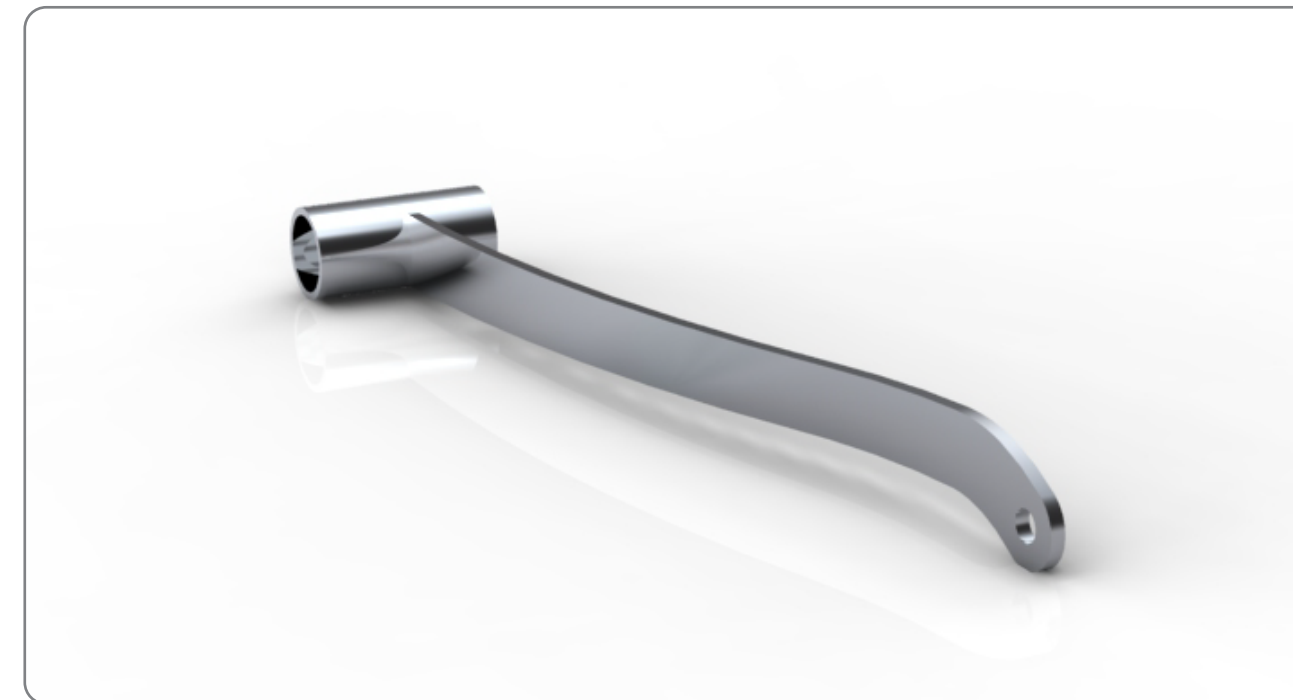
The objective for this project was to redesign an existing Merits bariatric heavy duty wheelchair, and integrate a power assistance system to an existing frame.



Removing the original accelerator



Disassembling the Original Merits heavy duty wheelchair.  
The capacity of the frame is 350 lb



Designed the lever that allows the motor to fold together with the frame using scissor action movement.

