



Pulling out of the urban fabric of Manhattan's East side, this mixed use building provides a variety of modern commercial and residential spaces. Playful use of terra cotta panels and an ellipse punched louvered southern facade connect to both busy and quiet streets. An enclosed rooftop aquaponic vegetable garden provides a productive and unique urban space.

7.1 Street Perspective

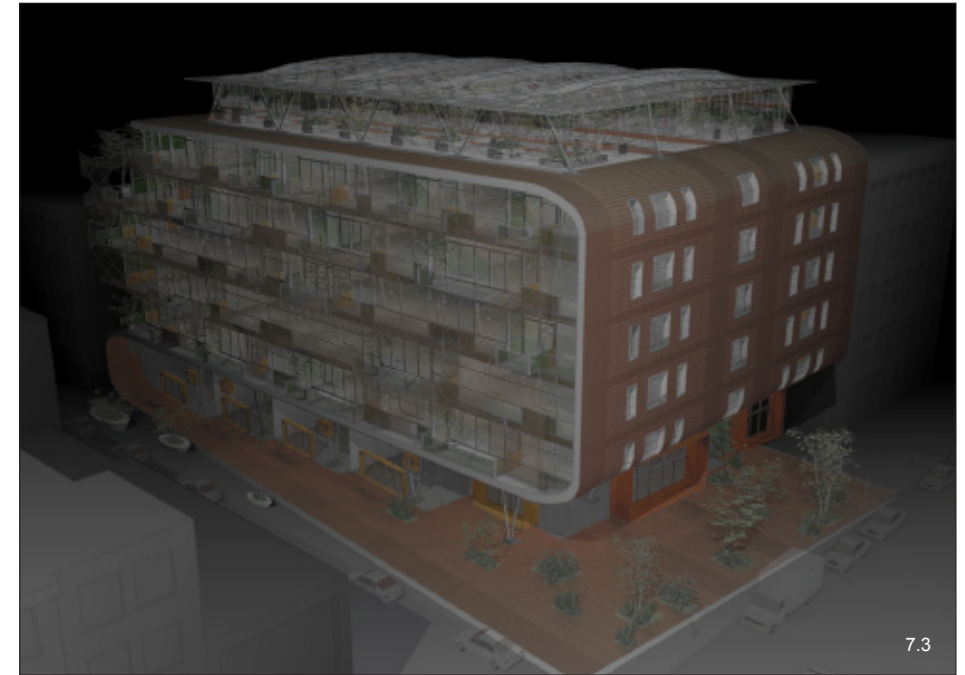
7.2 Unit Interior

7.3 Aerial Perspective



.07

Mixed Use Concept



Birkhauser Design