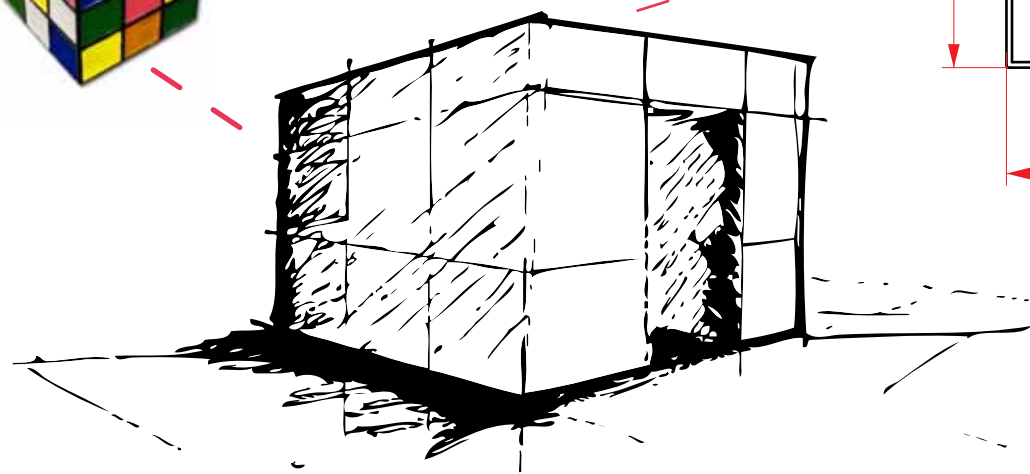


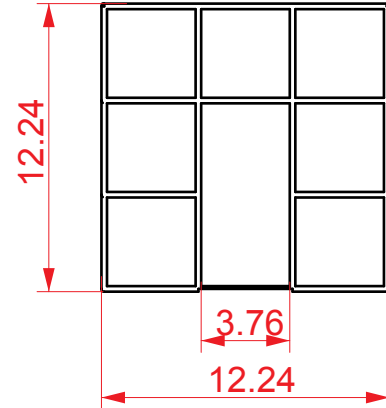
inspiration



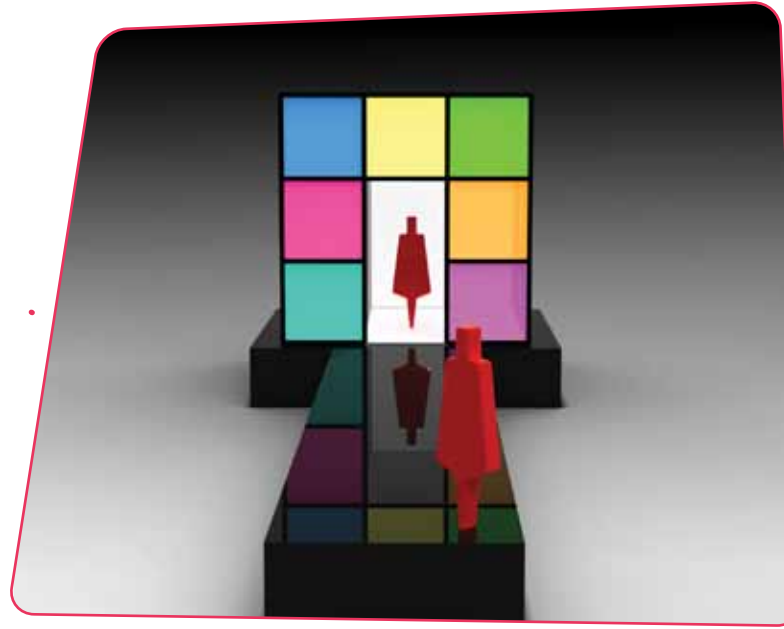
sketch



dimensions



rendered model



The Cube that became the focal point of the **2009 Phashion Phest** stage was designed initially in Rhinoceros and my group presented it to the director of the show as a possible direction. Once it was selected, our class decided to construct wood frames that would house lights with color films to produce the right colors for the theme of the show.

show time



fabrication

TEAMwork

