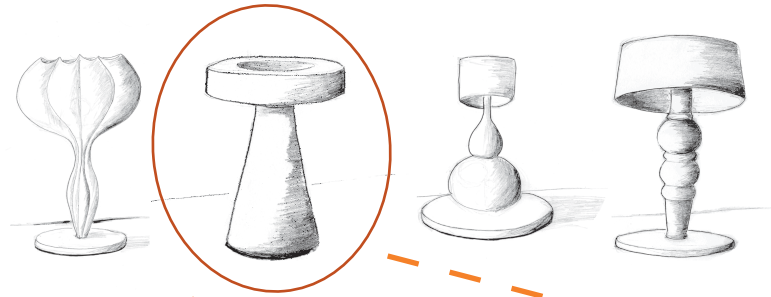
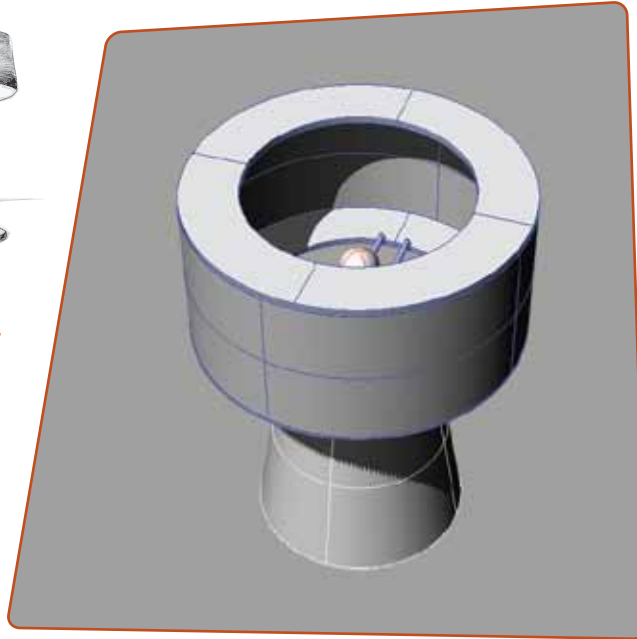


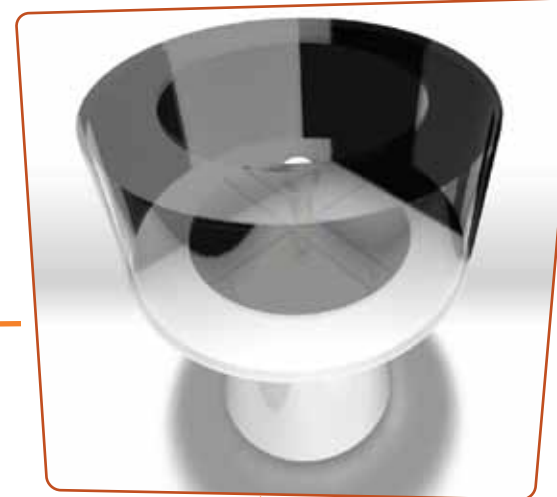
### IDEATION



### SCULPTED IN RHINO



### SHOWCASE RENDERING



### INSPIRATION



The shapes of the shade and base of the **Black Halo** lamp reflect the proportions that **Marcel Wanders** recreates. Meanwhile, the lace element within the shade is reminiscent of 19th Century art.

The **Black Halo** was also shown at the **2010 Furniture Show** in Philadelphia.

The final prototype materials for the base are plexiglass and plaster for the base.

### AWARDED 3RD IN COMPETITION



### ON DISPLAY AT FURNITURE SHOW



The Art Institute of Philadelphia Industrial Design Technology booth at the 2010 Philadelphia Invitational Furniture Show  
By The Art Institute of Philadelphia