



# Laundry Snake

Storing and moving laundry through biomimicry



# The Boa Constrictor

## What Can the Constrictor Teach about Storage?

### DIET:

Includes monkeys, birds, and **wild pigs** (NationalGeographic, 2012)  
Which are several times **larger than the snake's diameter**  
**Flexible body expands** to accommodate large food items

### FLEXIBLE JAWS:

Extremely flexible  
Double-jointed **hinge can dislocate**  
Jaw bones **not fused**  
Opens 150 degrees (Perry, 2012)

### SWALLOWING:

**Skeleton expands**  
Body stretches

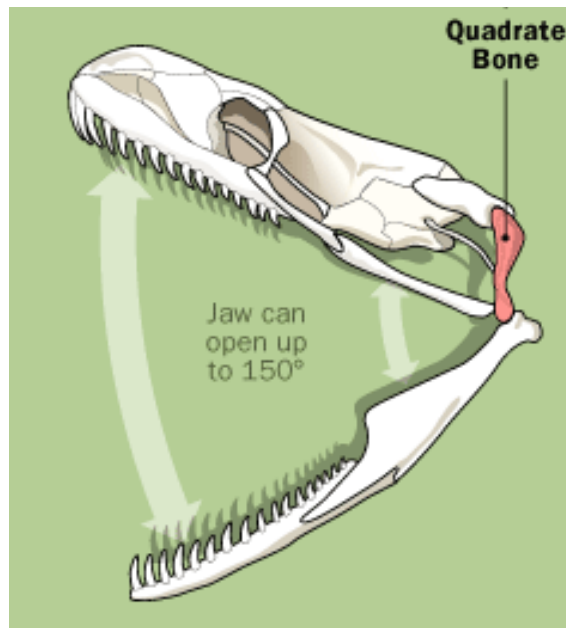


Image retrieved from: howstuffworks.com



Image retrieved from: animals.nationalgeographic.com

## Inspired Design

Like a constrictor, the “Laundry Snake” has flexible **“jaws”** which open and stretch to accommodate large articles of laundry.

It's “body” expands as it stores more and more clothing.

Like a boa wrap or shoulder bag, it wraps around the user's body for **portability**.

### References:

Boa constrictor. (n.d.). National Geographic. Retrieved March 12, 2012, from Animals.nationalgeographic.com/animals/reptiles/boa-constrictor/  
Perry, L. (n.d.). What a Snake Eats. HowStuffWorks "Science". Retrieved March 25, 2012, from <http://science.howstuffworks.com/>



# Convenient Use



## Elastic "Jaw" Structure

Jaws open and **stretch** to accommodate large items

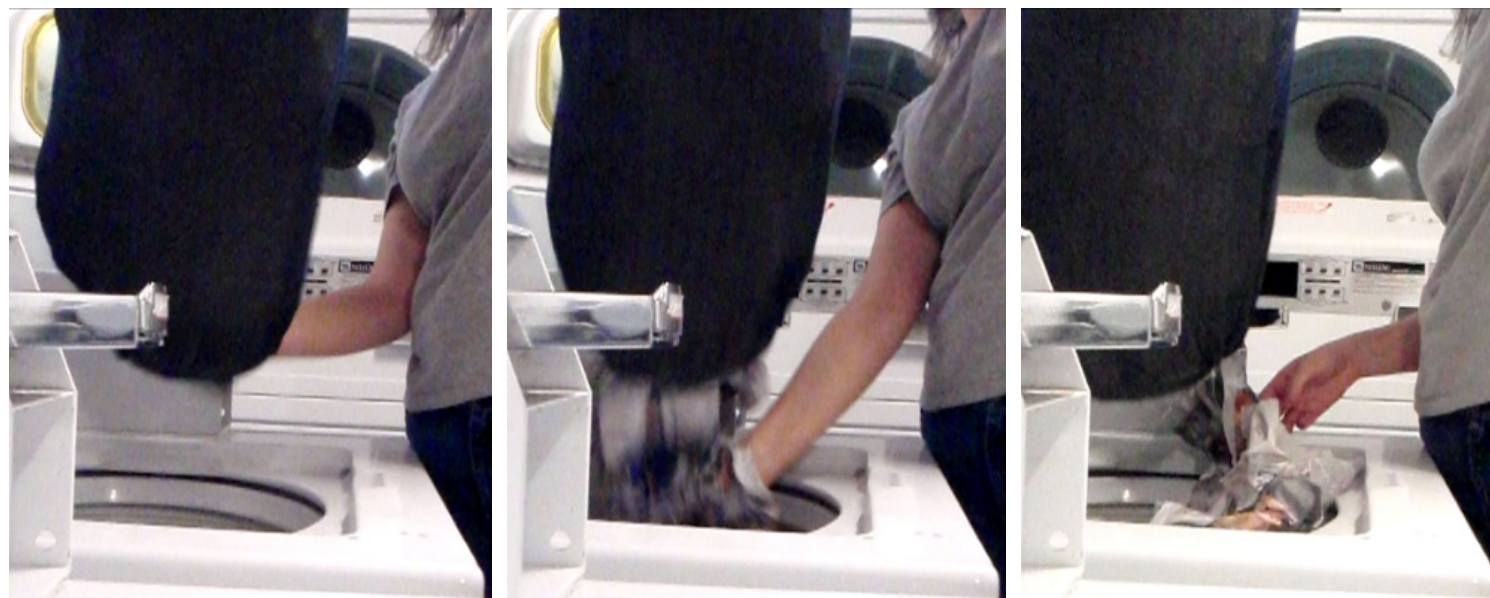
"Jaws" **snap closed** for odor containment and portability



## Adjustable Strap

**Hands-free** commute to laundromat

Removable for versatile **portability**



## Easily Empties into Washing Machine

Jaws open for a simple transition from bag to washing machine

Laundry simply pours out