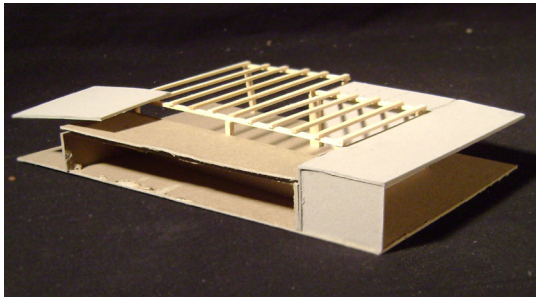


# Metro Pedal Power

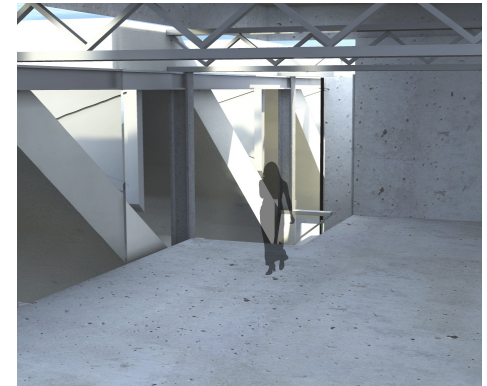
Junior Year 1st Semester Prof. Hoffman

The company Metro Pedal Power delivers goods on trikes that are powered by nothing but pedal power, that the humans who drive them produce. The main concept for the warehouse for this company is a direct route from loading through the space to the street for the trikes. The warehouse is the core and the skeleton of the building and the other spaces that are not as important to the company are wrapped around the warehouse.



## The Core

The core of the warehouse needed to be an open space; so a filigree structure was chosen. The shop, offices and classrooms are wrapped around the warehouse which is the core of the building that all the other programs depend on. People walking the street can see into the warehouse and also have an easily accessible entrance to the shop. The offices and classrooms are still connected to the warehouse but are not easily accessible to the public.



## Light Through Roof

The roof structure in its final stages were sunken down into the warehouse and are held up by two sets of trusses. Since they are sunken down into the building the second floor can benefit from the folded plate roofs.



## Roof Process

The roof for the warehouse needed to let in light but it also needed to be a filtered light that would create a good working environment. In the first roof attempt the folded roof plates were on top.