

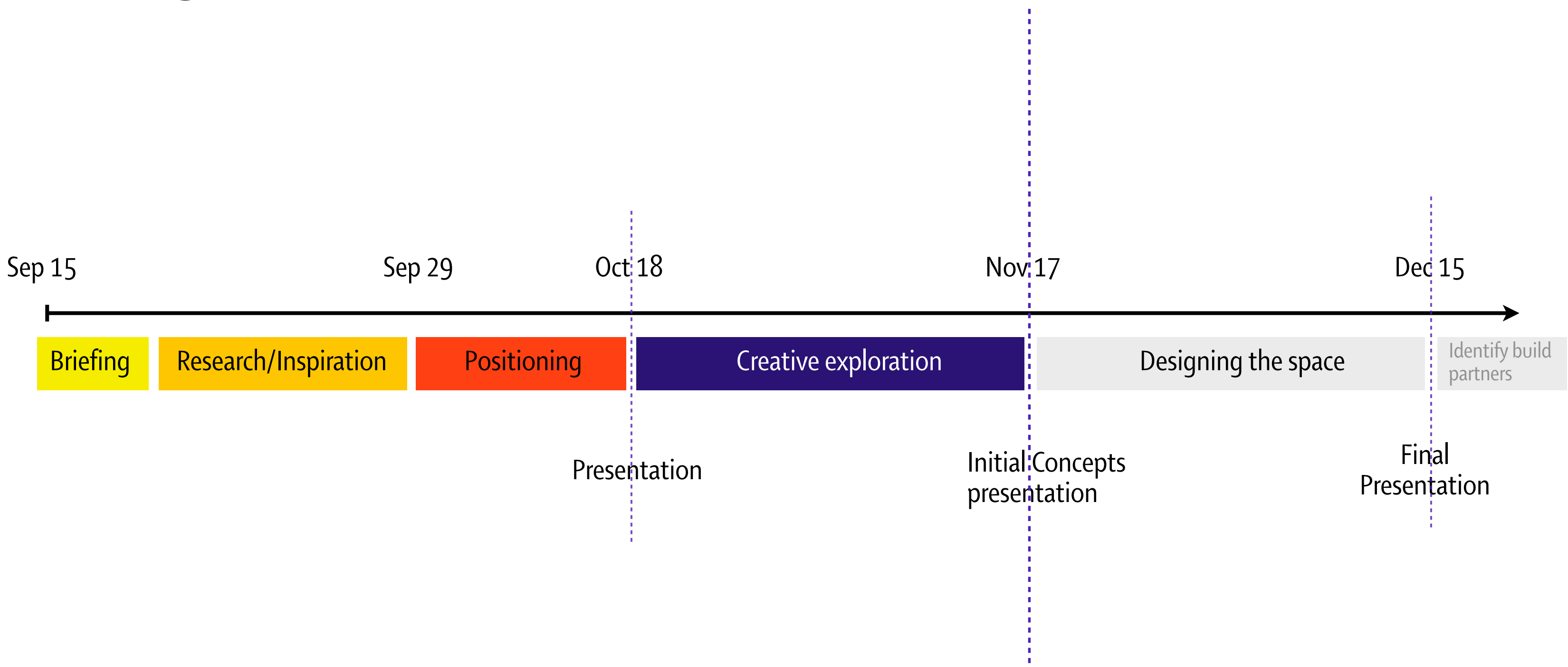
Oregon Sustainability Center

Creative Development v1

November 17



Timing



A quick reminder of where we got to

The OSC is a Living Building

**Built with nature
To help cities thrive**





Responsive

growing, living, breathing, changing, alive, dynamic,
matching our use of natural resources with the earth's
capacity to sustain us, thriving through balance

Playful

curiosity, a sense of wonder and awe,
lightness and humor, getting your hands dirty

**Inter
dependence**

unity, harmony, reconnecting, transparency,
the links between a city/its people/its ecosystems,
we're all in this together

Inheritance

transformation, fluidity, change, origins,
thinking beyond your own lifetime,
how we got here, where do we go now

Today's presentation

Overall creative idea and guidelines for the space

Explorations in look and feel

Starter thoughts for how to share the building's stories

Overall creative idea and guidelines for the space

A Living Building
Built with nature
To help cities thrive

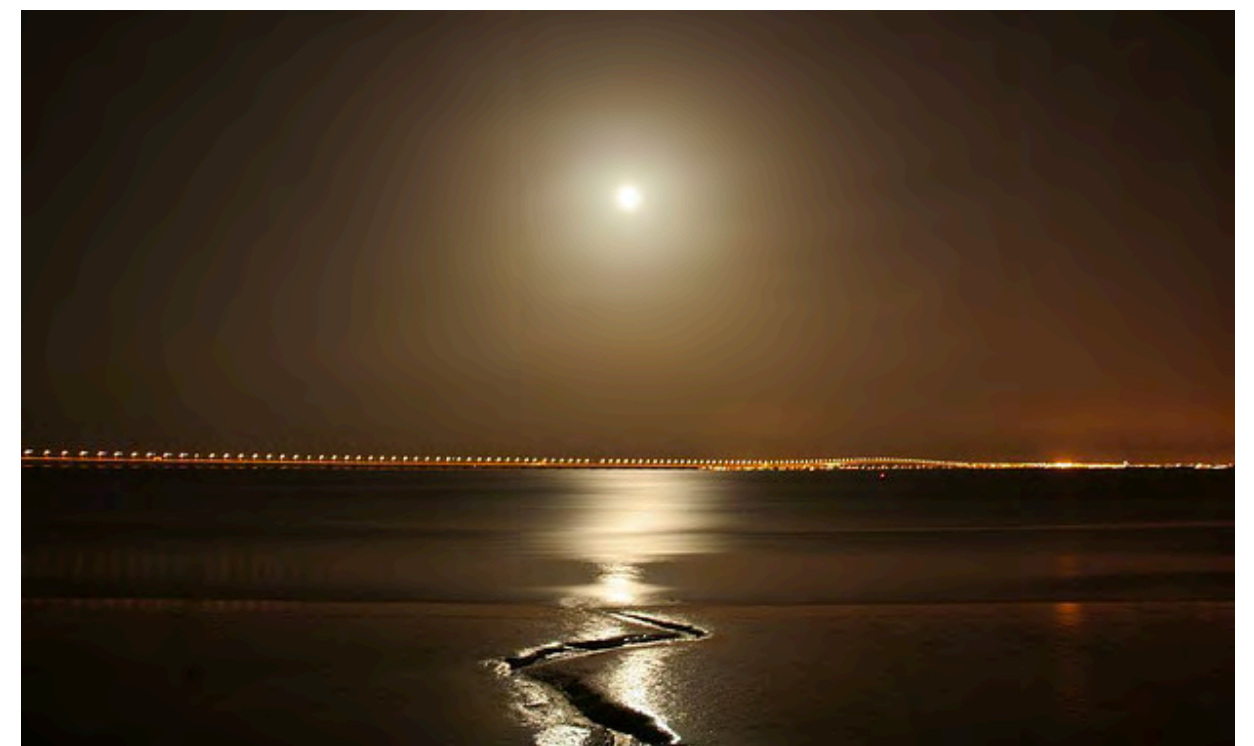
A space that keeps changing and growing,
never finished.

That has a pulse of its own.
Its own movement.

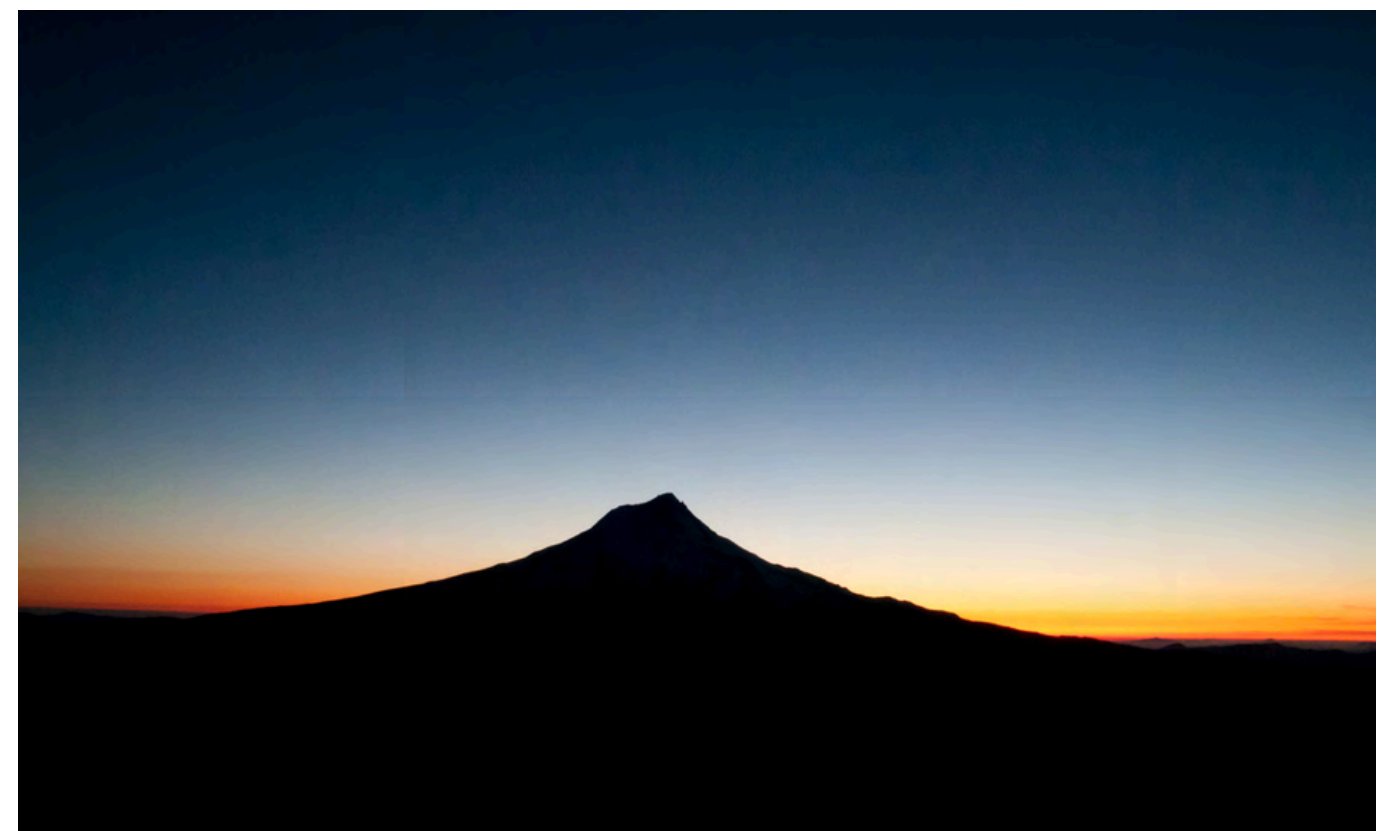
And is kept alive by its inhabitants and
visitors.



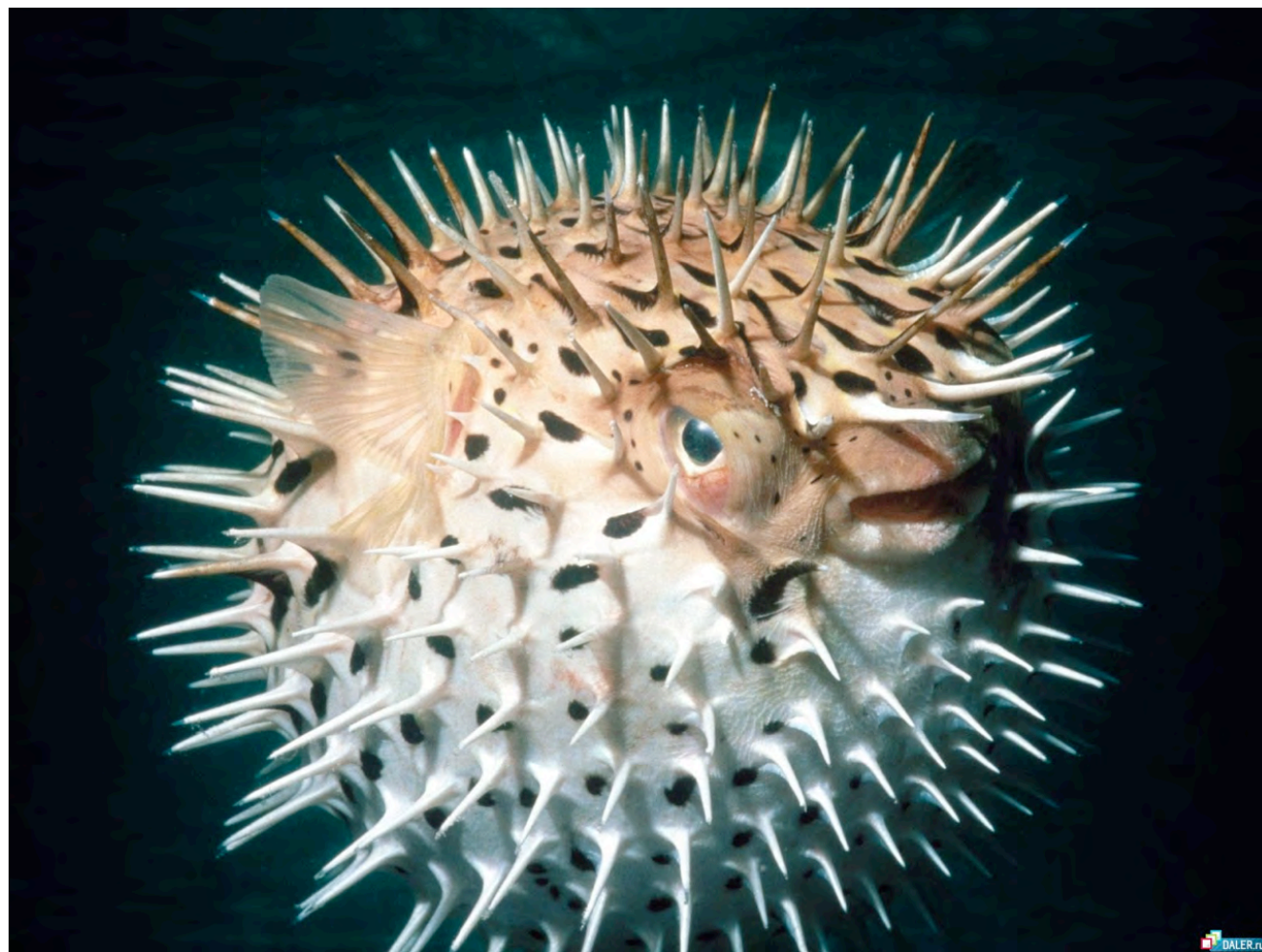
seasons



day/night



light



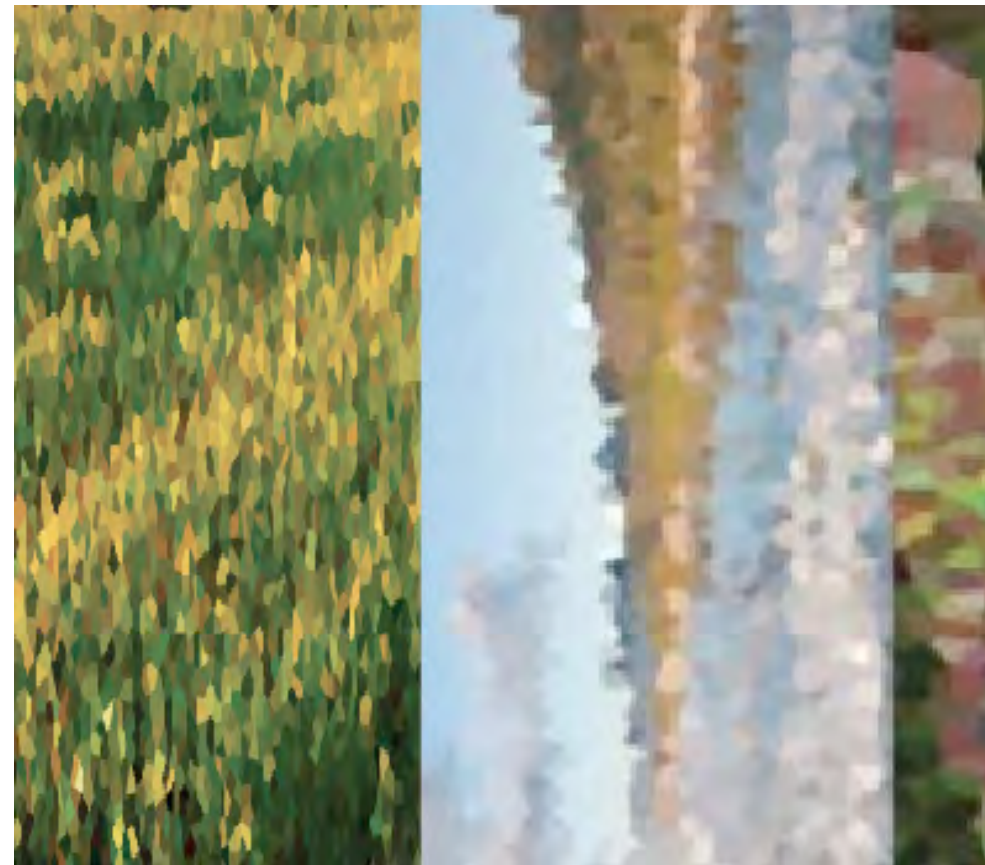
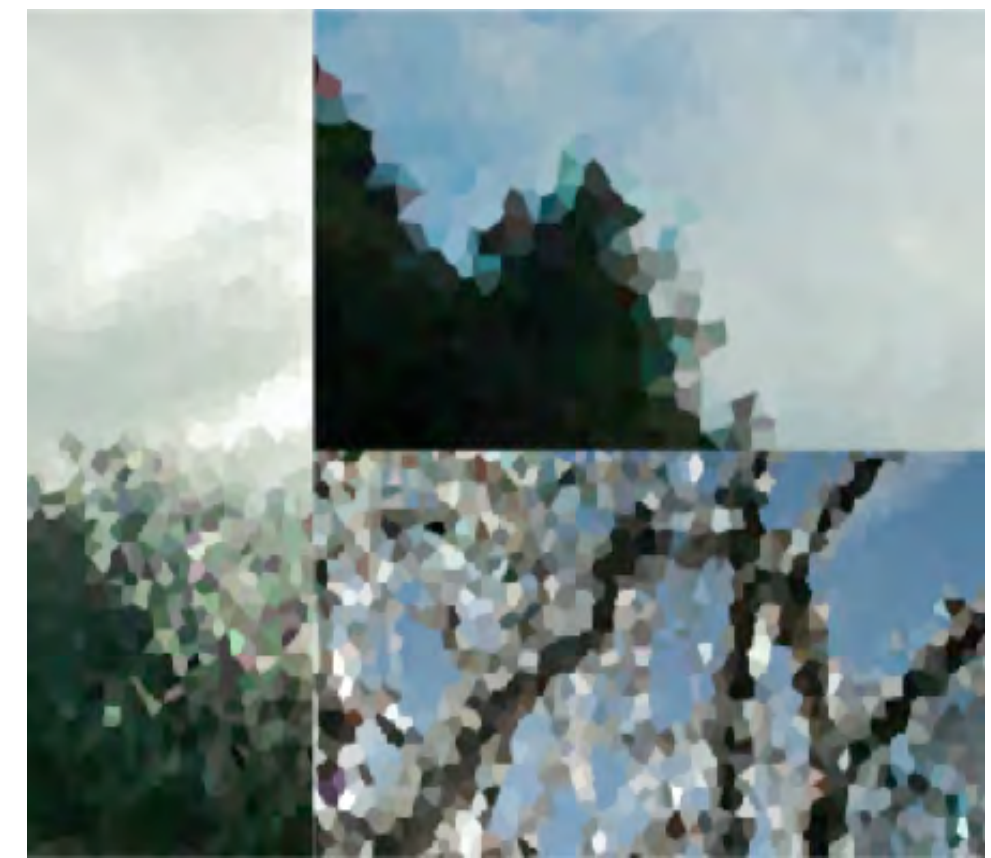
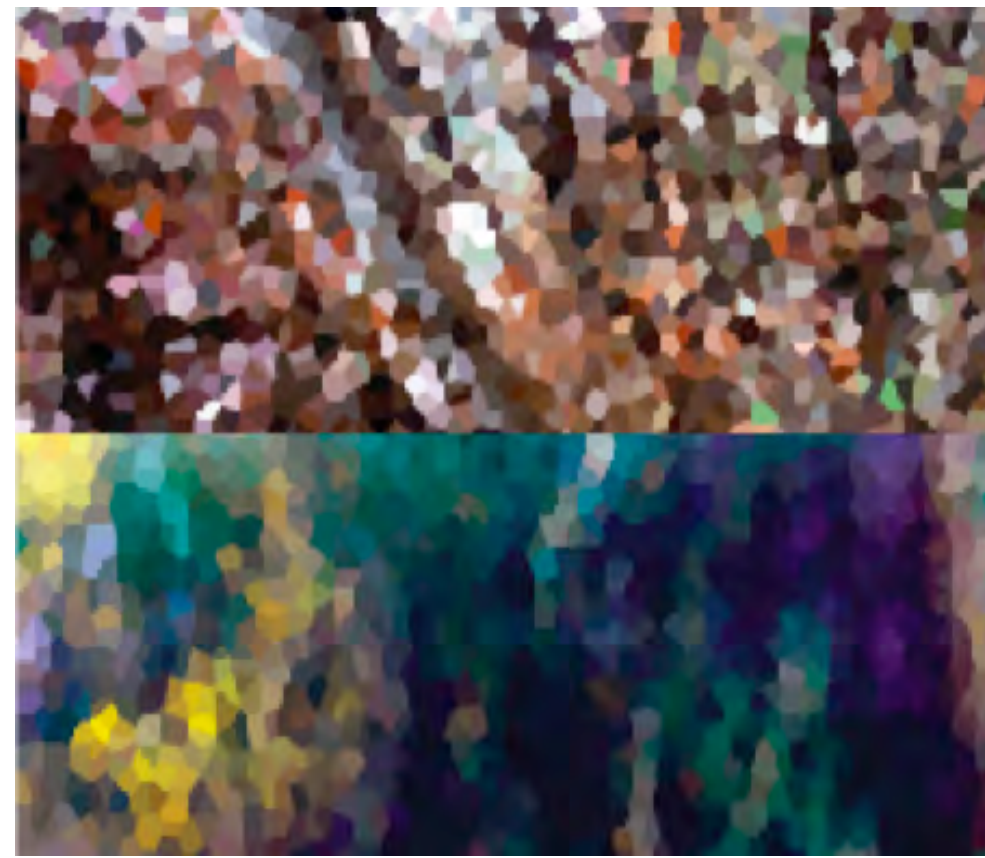
breath

Explorations in look and feel

Imagery...



...showing the wonder of nature that surrounds and engages us



Colors...

...inspired by the Oregon landscape,
changing with the seasons

A palette...

...with a timeless center,
and seasonal highlights

F



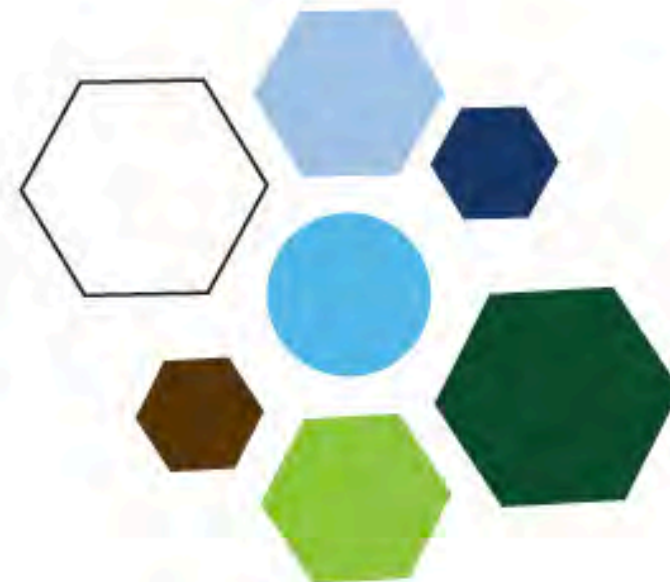
W



Sp



Su



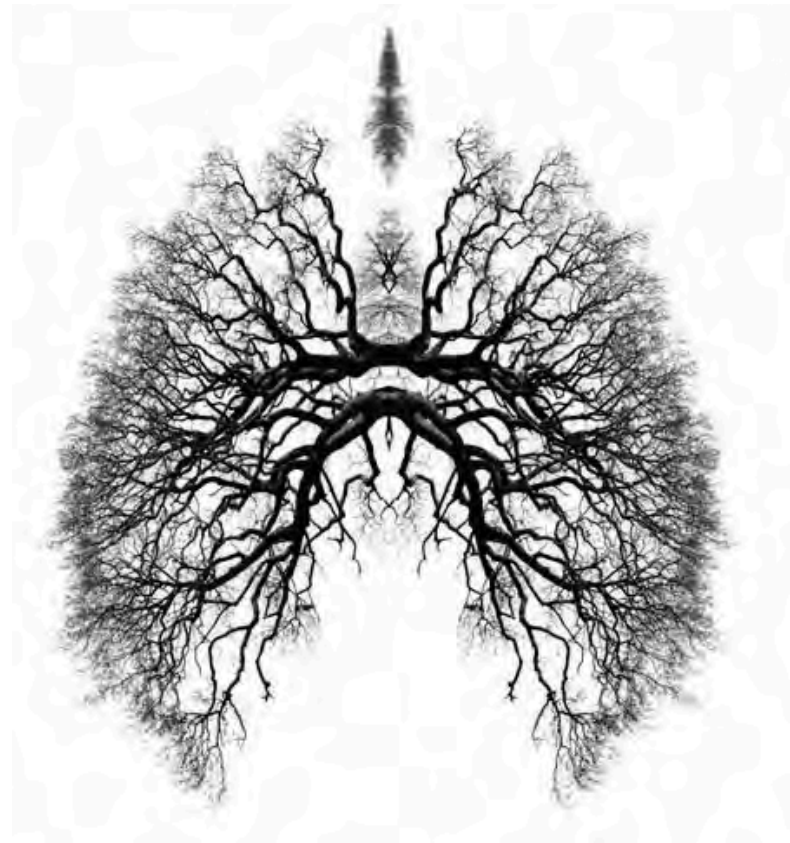


abcdefghijklmnopqrstuvwxyz
ABCDEFGHIJKLMNOPQRSTUVWXYZ
1234567890!@
()%\$#-?&*;:,. .

Type

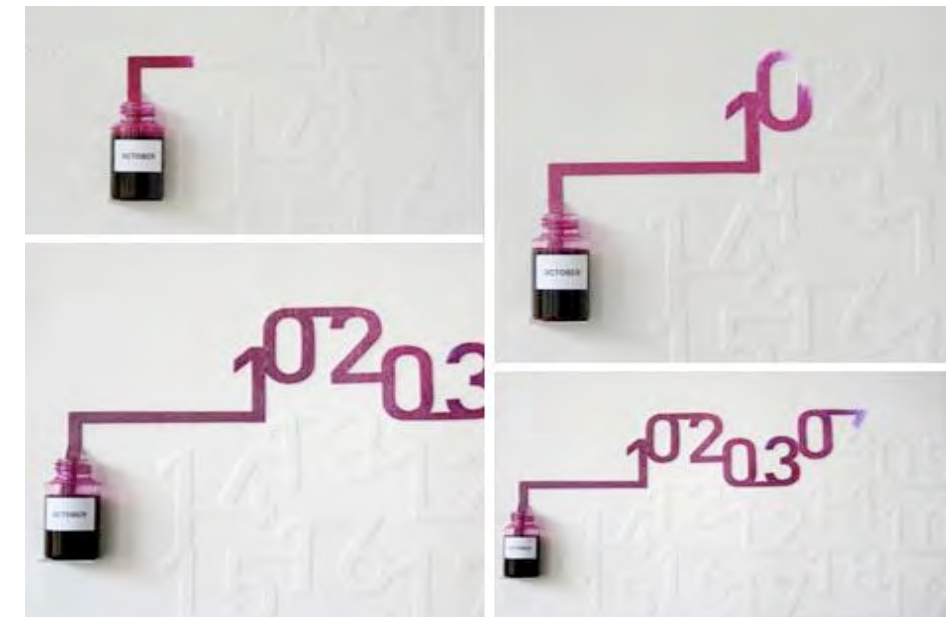
A mixture of clean, professional typefaces and rough or handwritten typefaces to capture the spectrum of design within sustainability, from sleek to DIY.





Movement

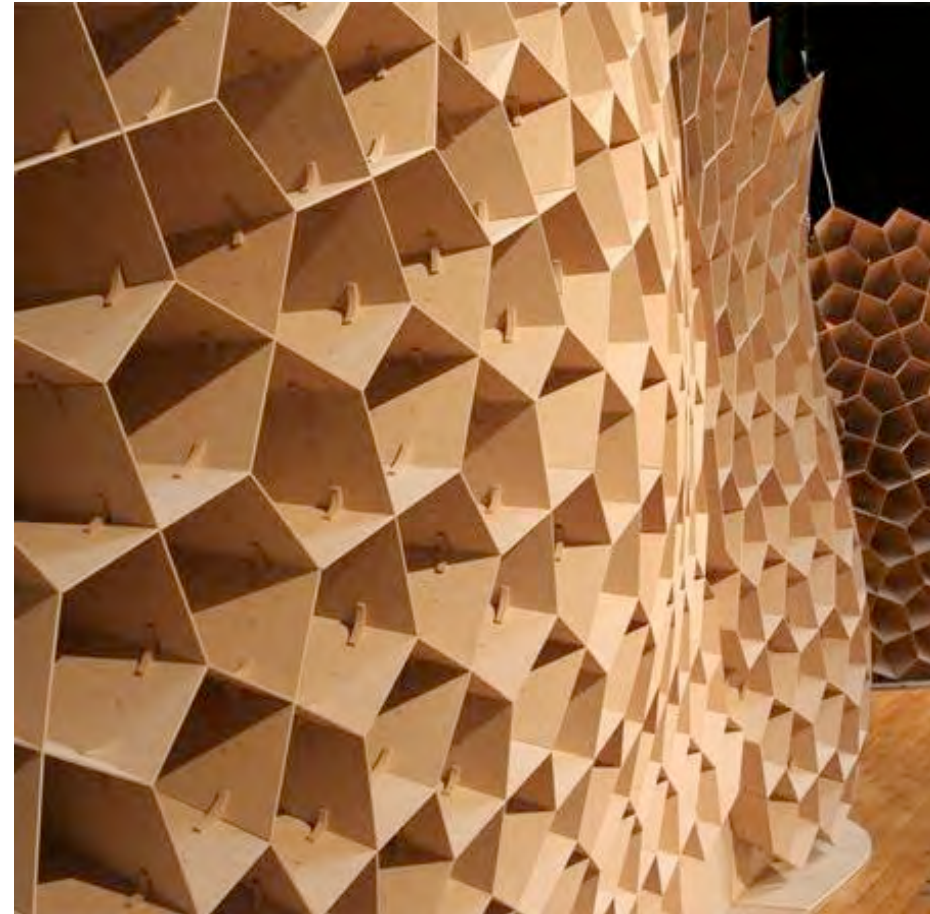
Mimicking movement in nature
such as capillary action, or
harnessing natural movement like
wind or rain





Shapes

Inspired by beautiful patterns
and efficient structures



Spaces



That emulate the natural habitat
and delightful shelters within a
forest

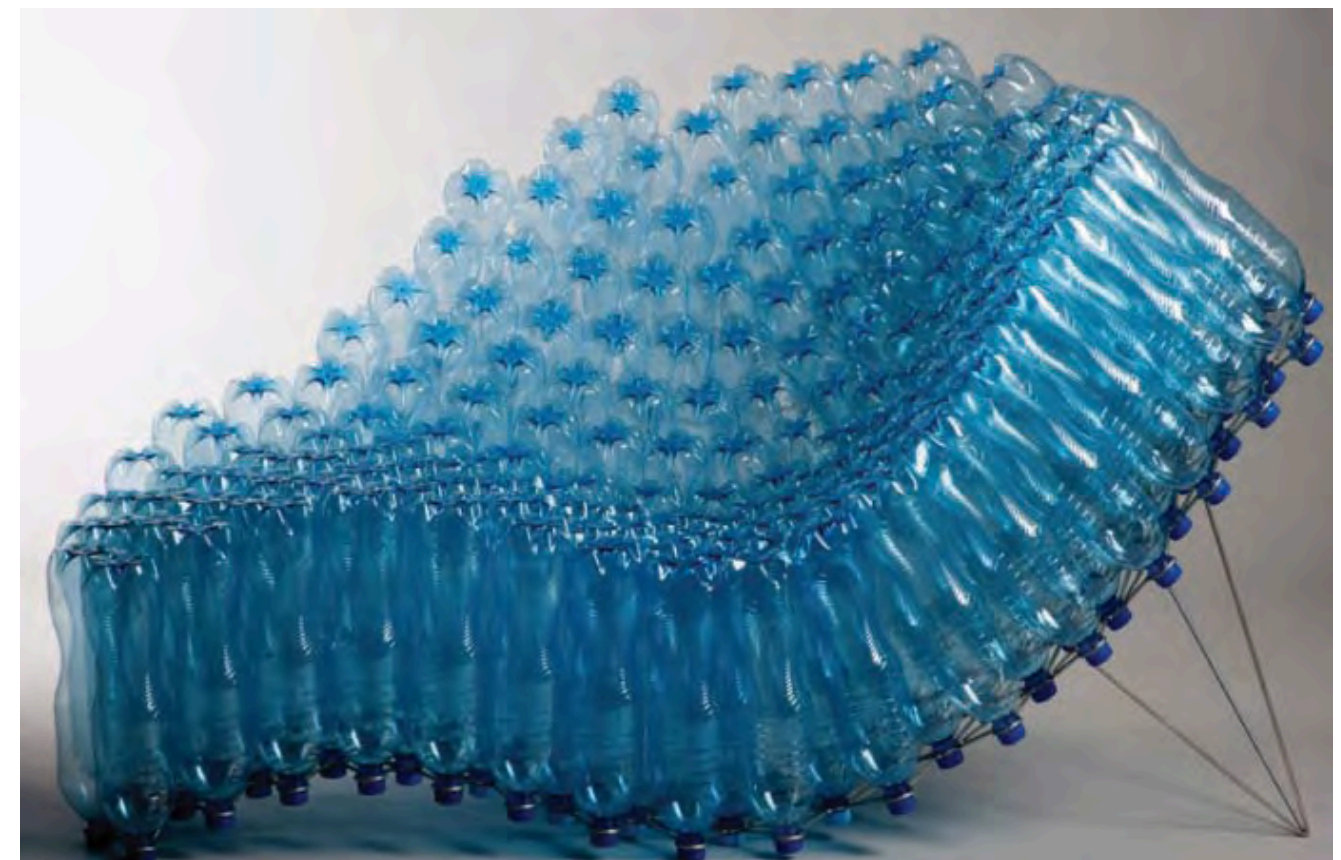


Materials

With a rich history in our region
or an evolving future for our
environment



Everyday objects, repurposed
to bring together sleek
design and DIY



Light

Using natural light when we can.
A dappled effect, like light coming
through a tree canopy



Using light to tell us about time and seasons



Light

The warmth associated with an open flame. The softness of flickering light

A mix of streamlined and sculptural forms that function like lanterns, but with LED efficiency



Starter thoughts for how to share the building's stories...

Or...

..how does the building talk to us?

osc



the living building challenge

zero waste

health
beauty
equity



oregon

history

resources



portland

urban sustainability



living building

operation

construction

world



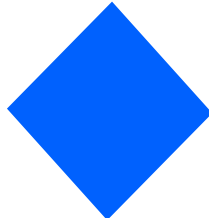
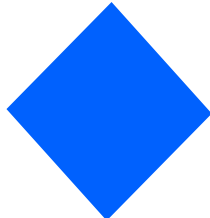
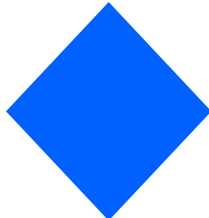
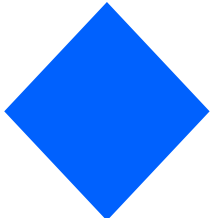
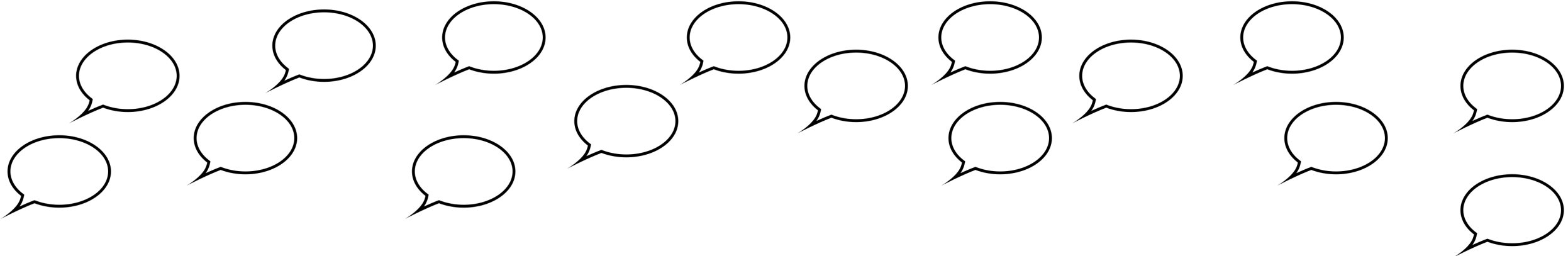
USERS AND VISITORS

COMMUNITY PARTNERS

TENANTS

SEASONAL

EVERGREEN



WATER

ENERGY

WASTE

FOOD

TRANSPORT

ETC



EG. SOLARIZE

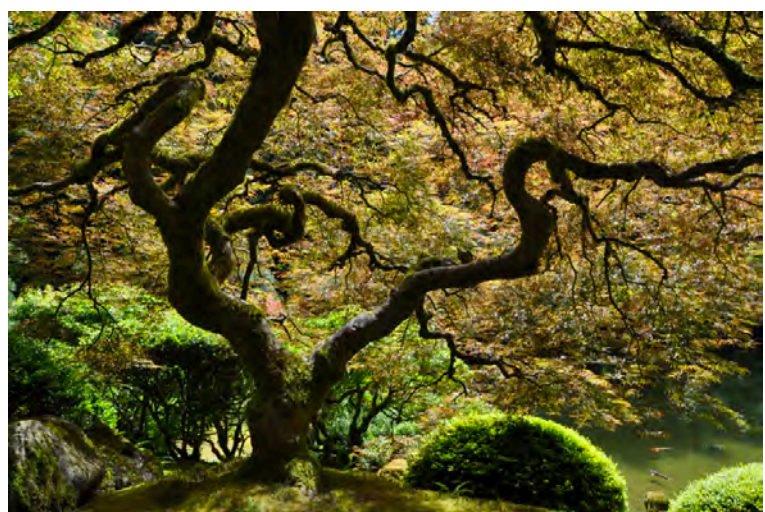
EG. LOCAL FARMS

EG. PANASONIC

EG. PDC

OSC PERMANENT STORIES

Permanent stories





The intuitive mind is a sacred gift and
the rational mind is a faithful servant.

We have created a society that honors
the servant and has forgotten the gift.

-Einstein



All of us, then, have been born into a world full of abstract technologies
and systems. We are forced to adapt to them in order to survive.

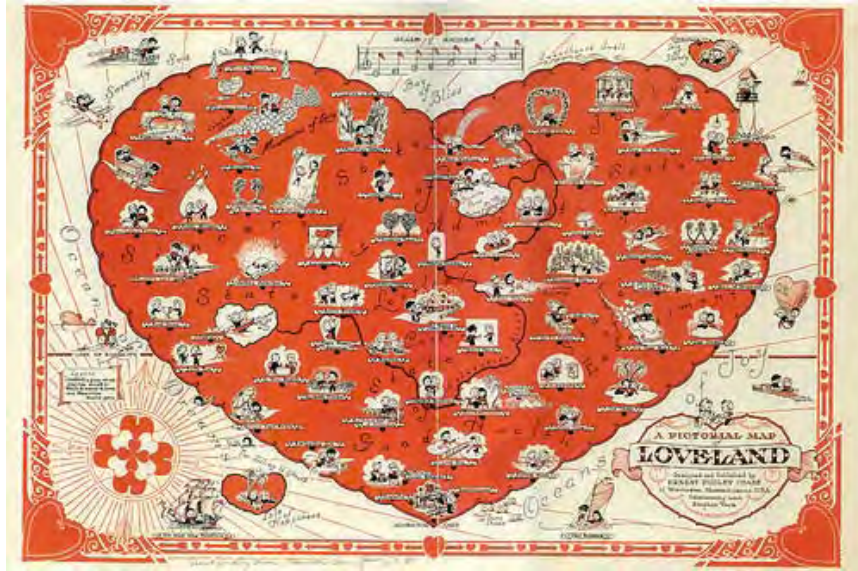
Berries, grassland, birds and clouds have long since ceased to be the
things we need to read in order to survive.

Insofar as these elements still exist in our environment, they have taken
on a recreational role.

Instead, we live in a world of screens.

-Koert Van Mensvoort, Our Environment as an Information Carrier

As we show the building's systems, its working and its health, let's make any representation



Emotional

(You feel the building's health, before you have to think about it)



Intuitive

(A child can tell what's going on)



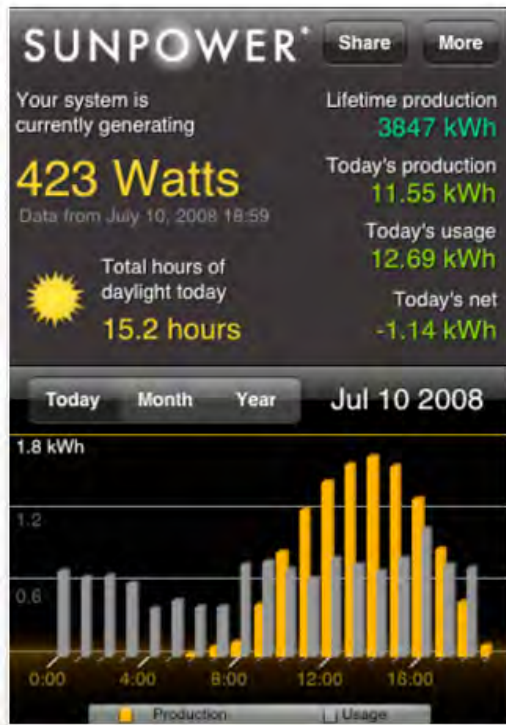
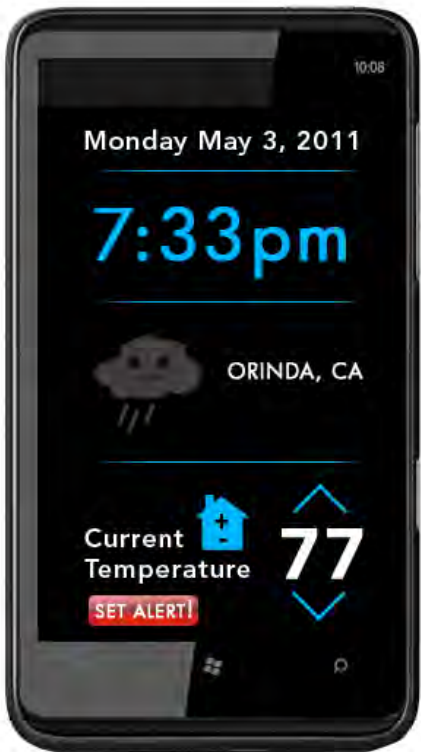
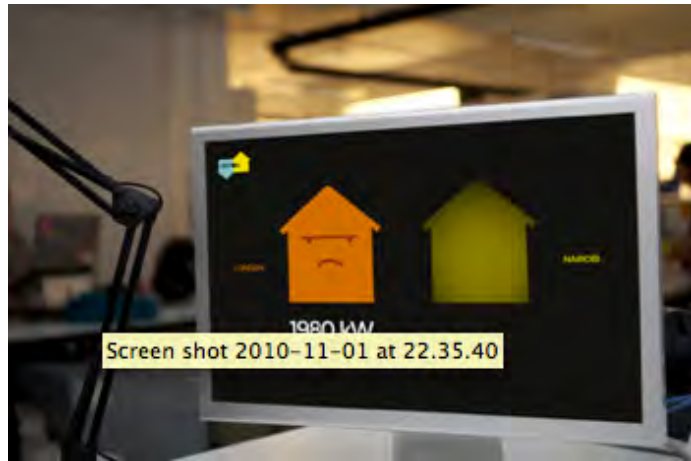
Embedded

(Part of the building's walls, ceilings, floor)



Responsive

(Encouraging feedback, or a change in behavior)

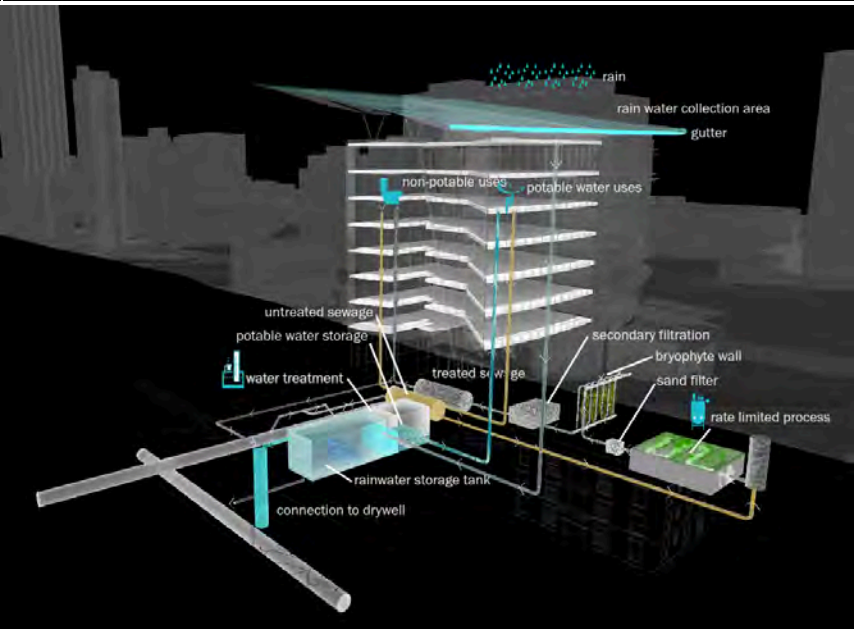
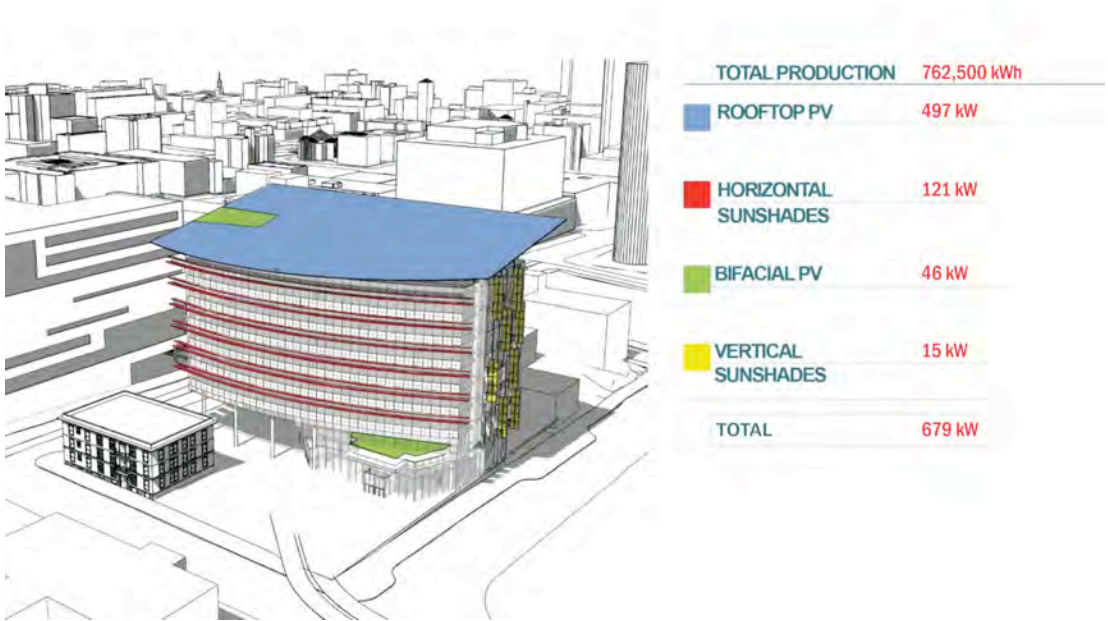
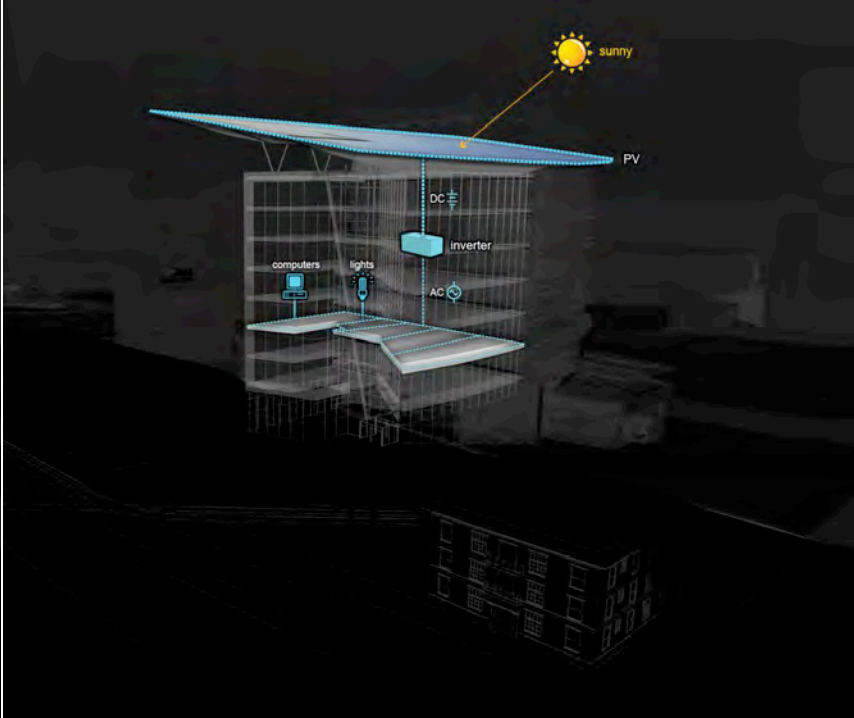
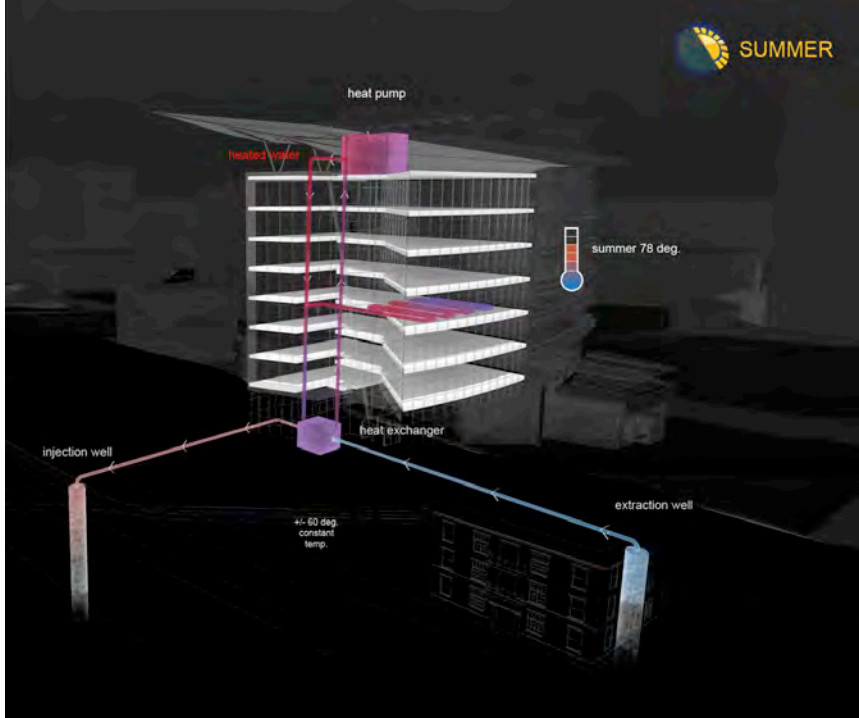


The Building (construction, operation)

Water

Energy (solar, geothermal)

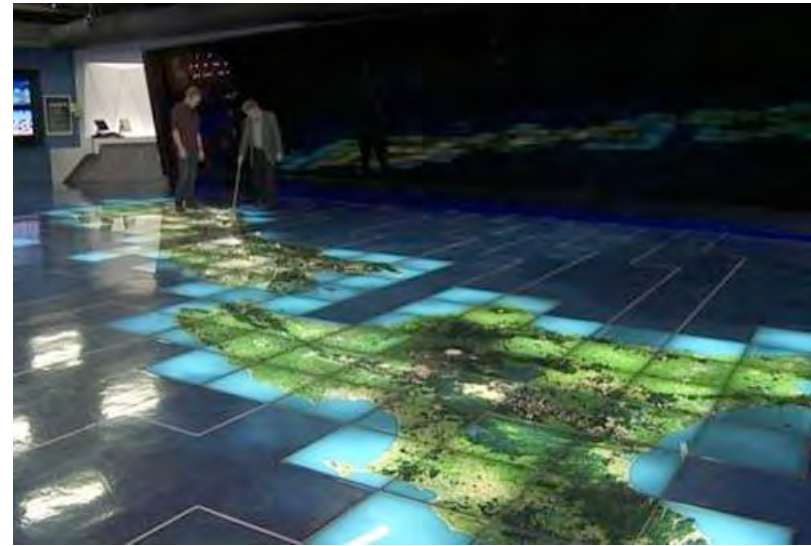
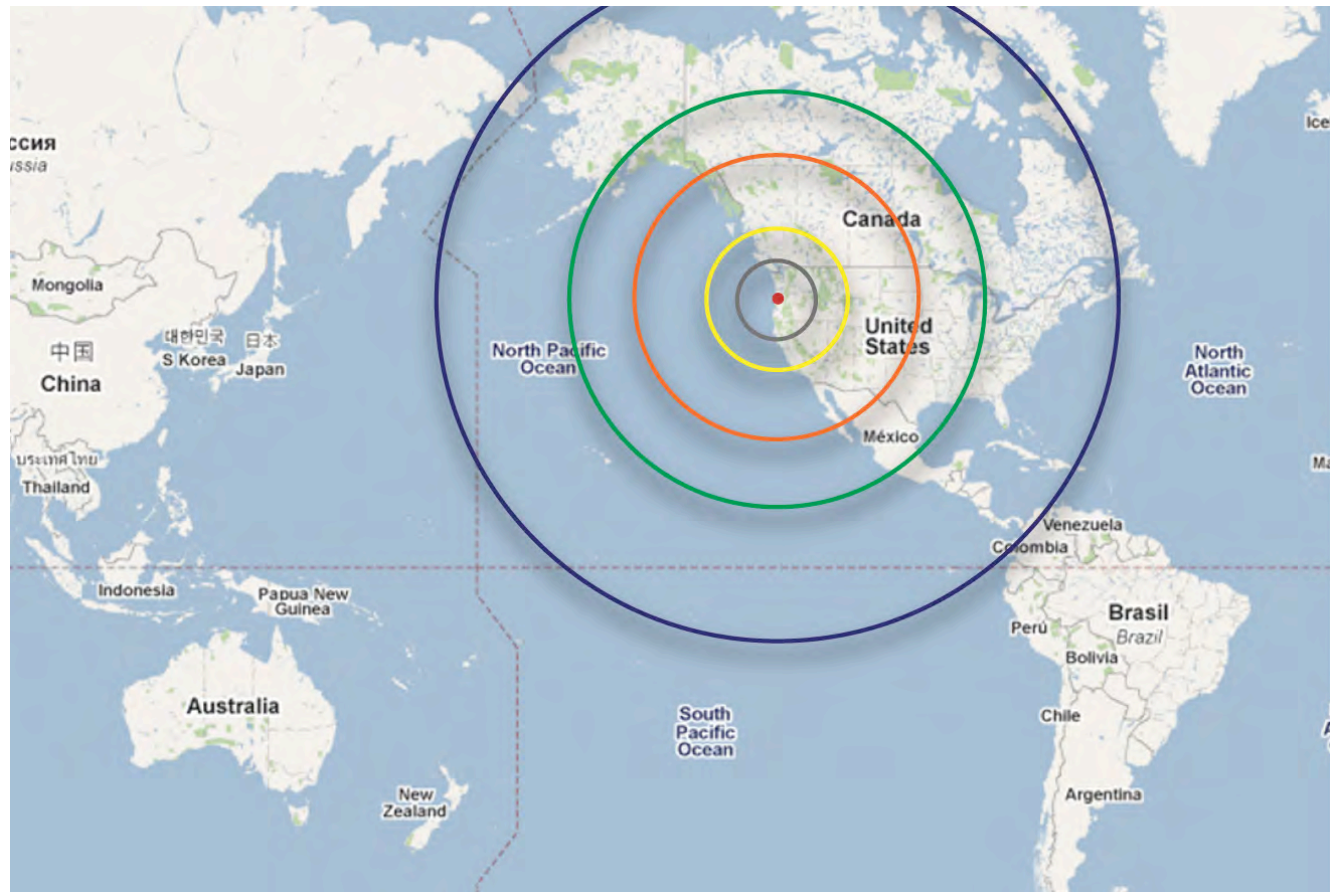
Waste



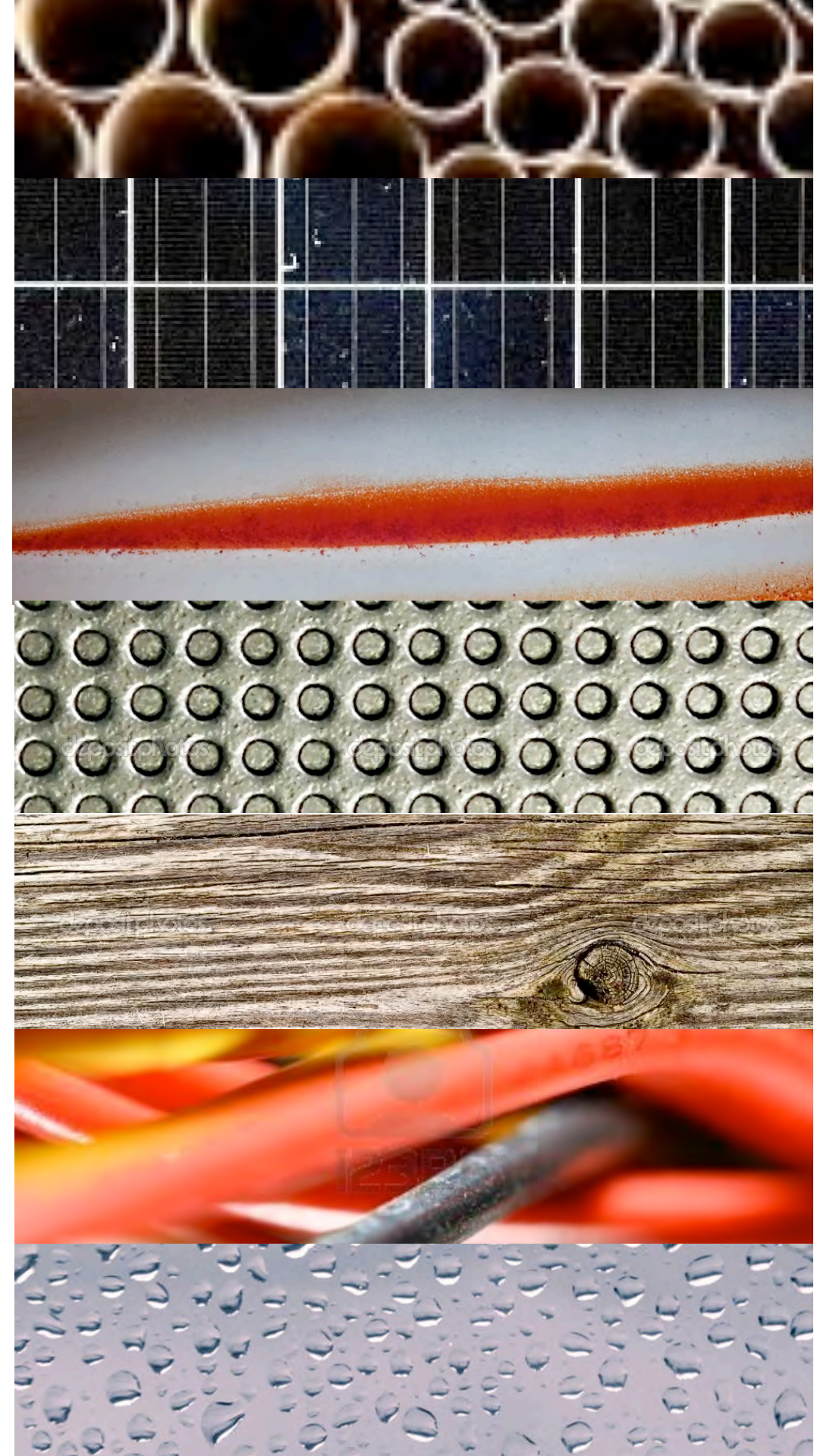
The Building - construction

A materials wall, showing the different components of the building, inviting people to explore

Relating them to Oregon's resources and broader sourcing.

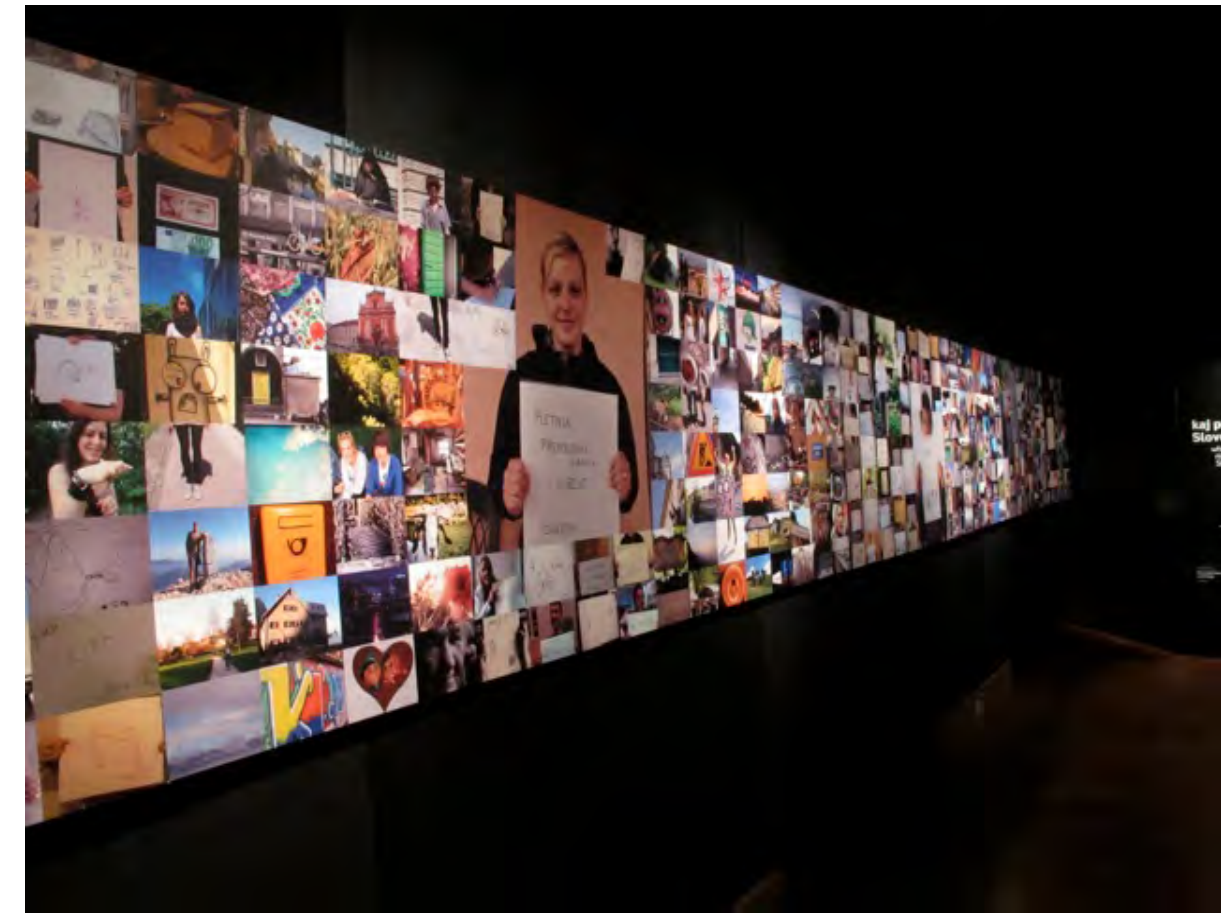
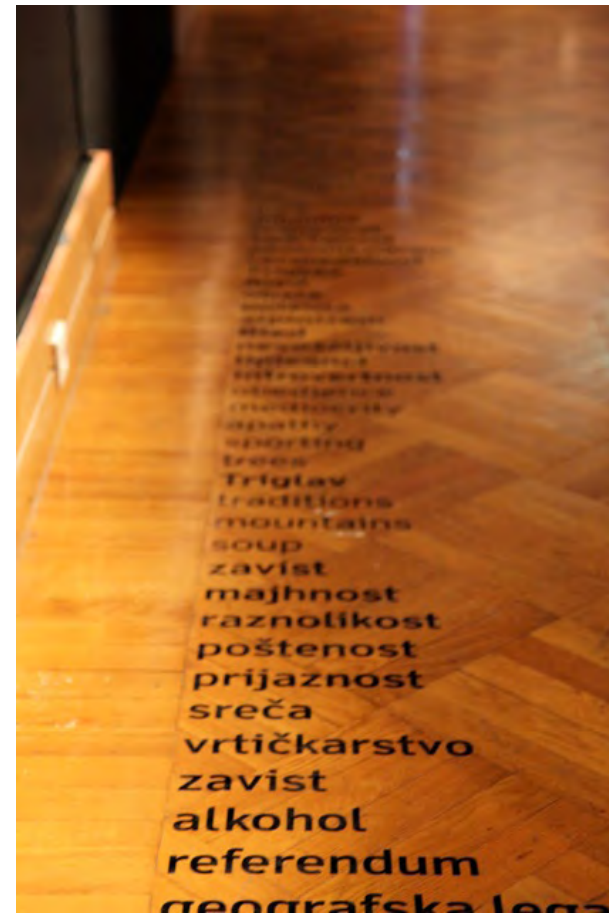


THE 'BIG MAP': World Game's "board," set up in auditorium at Broun University, covers an area roughly the size of a basketball court. Participants physically occupy areas they represent.



The Building - construction

The story of the conception and construction, told by the people involved, from architects to designers to planners to builders

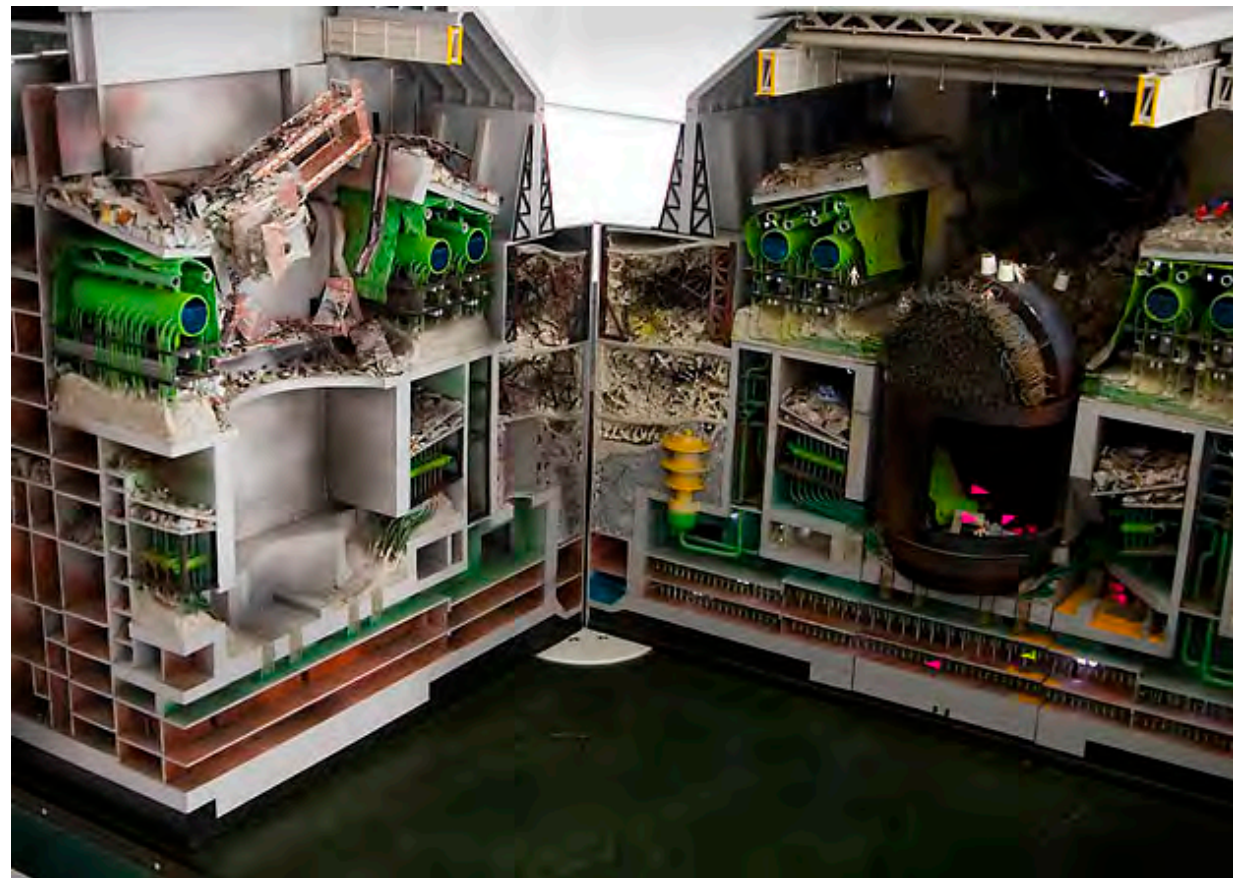
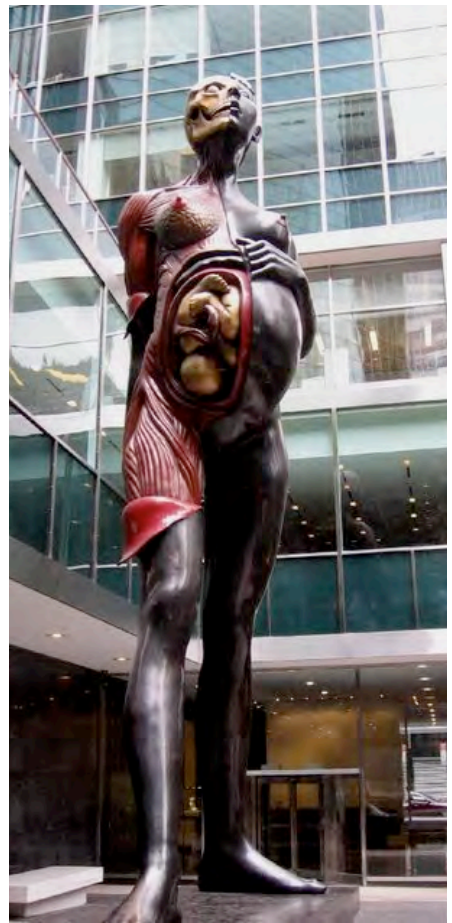
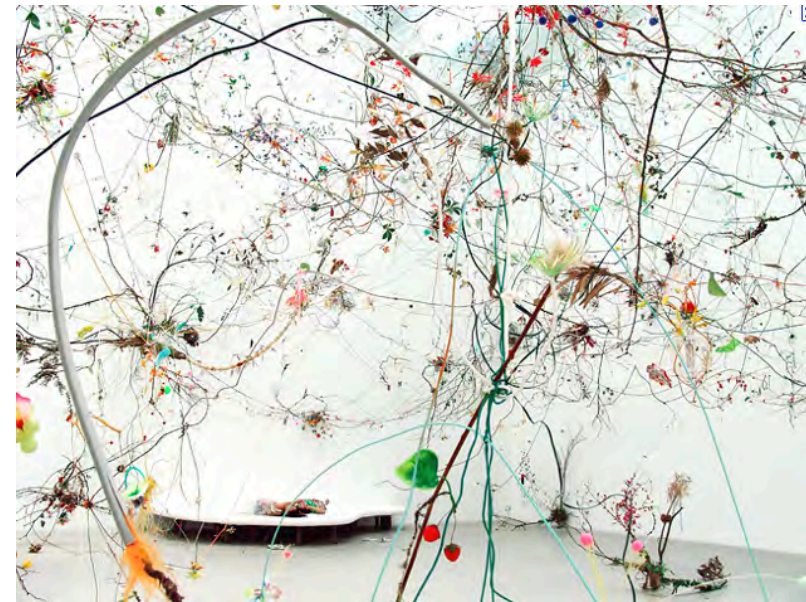
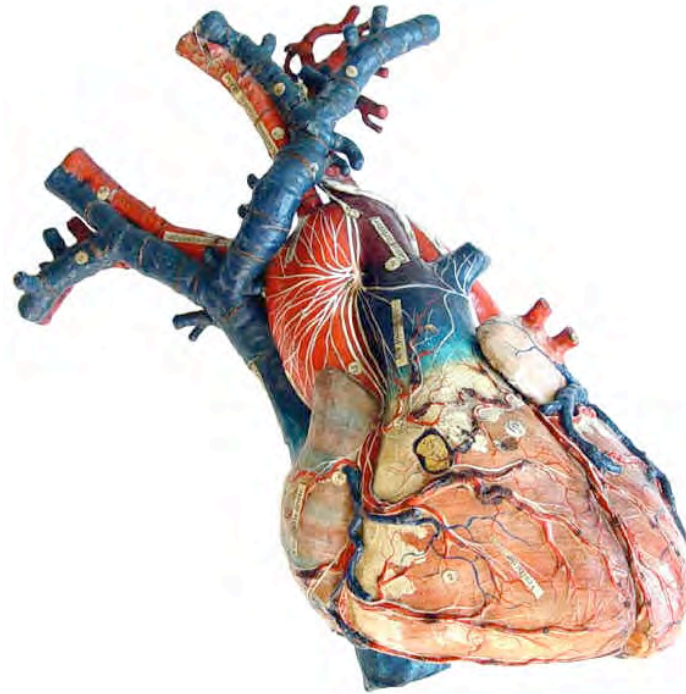
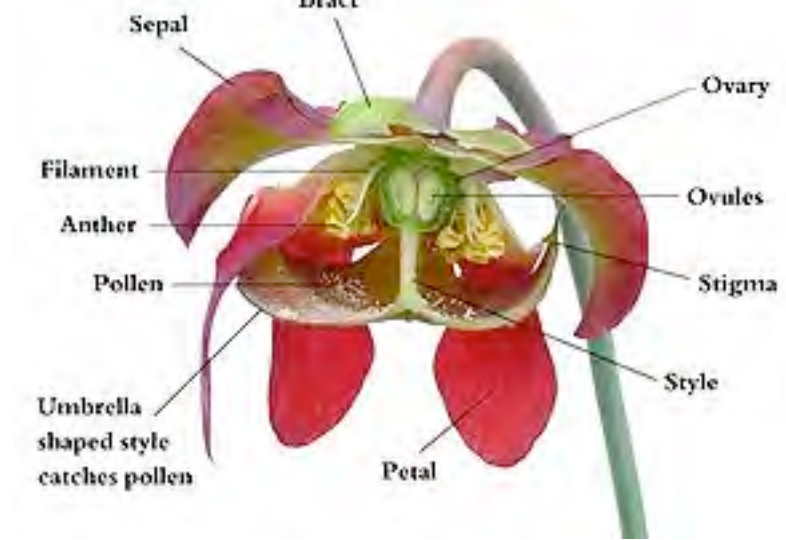


The Building - operation

A 1:xx scale model, realistic, but colorful and inviting. Inspired by plant and animal nervous systems

Moving parts to show PV and blinds. Light representing energy, water and waste.

Smart phones/devices give you x-ray access to the building.



The Building - operation

Showing people's usage of the building

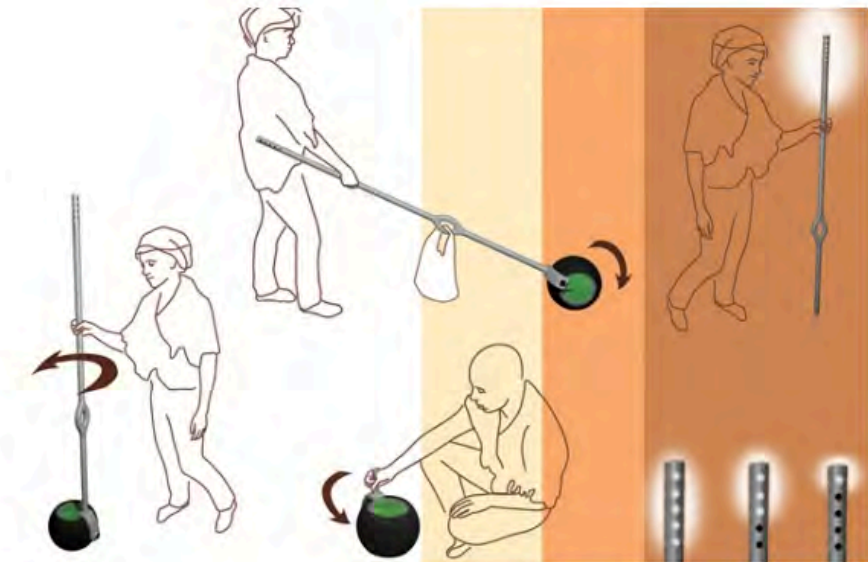
Encouraging changes in behavior

Something showing how much work it takes to produce energy
people as heaters.



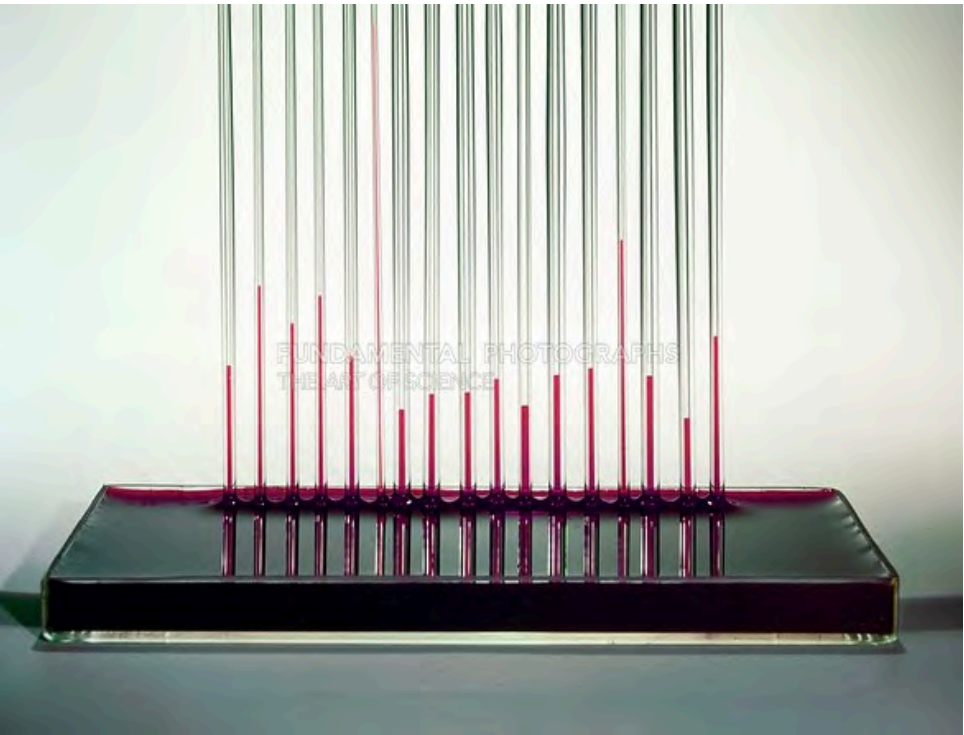
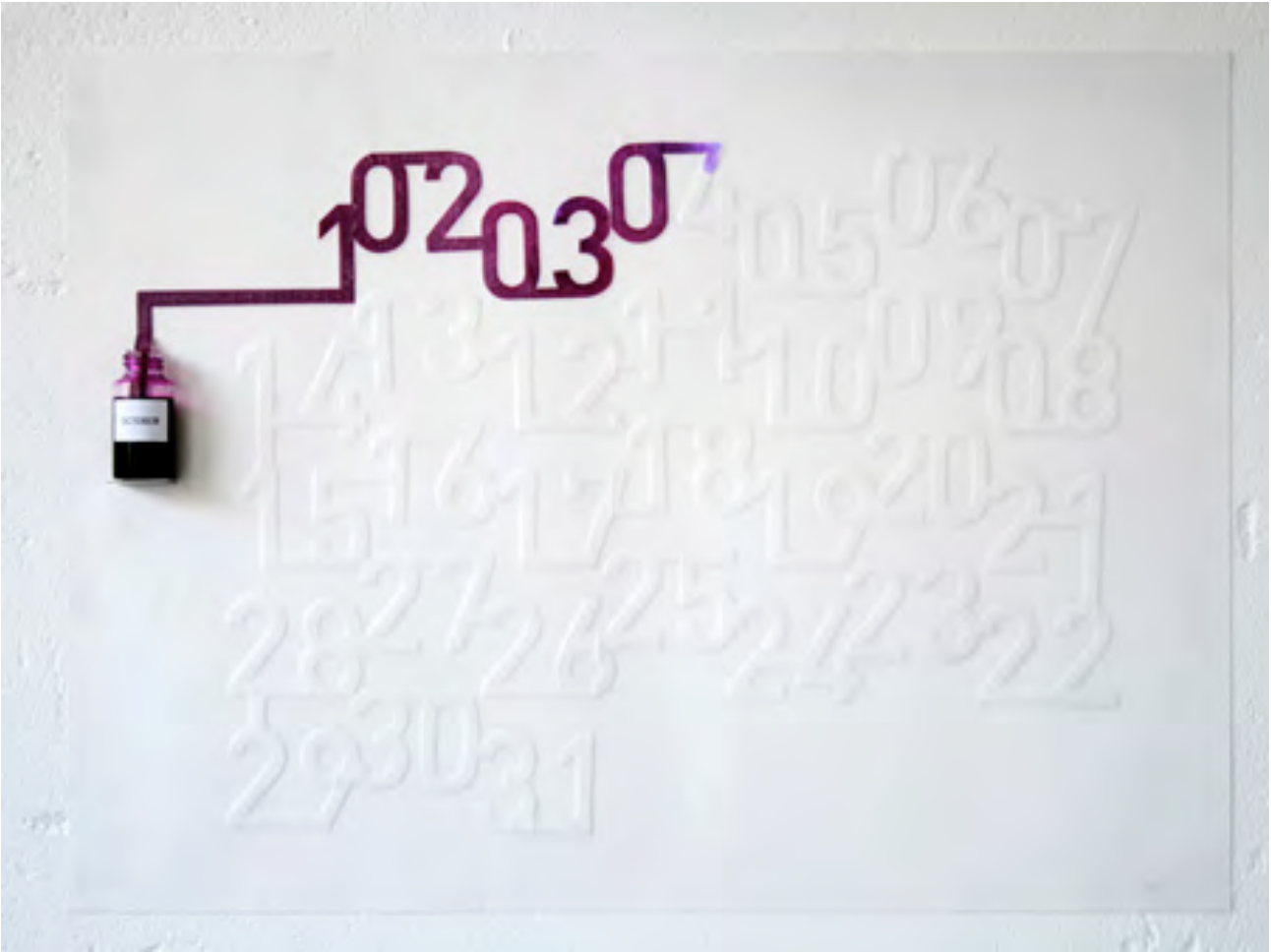
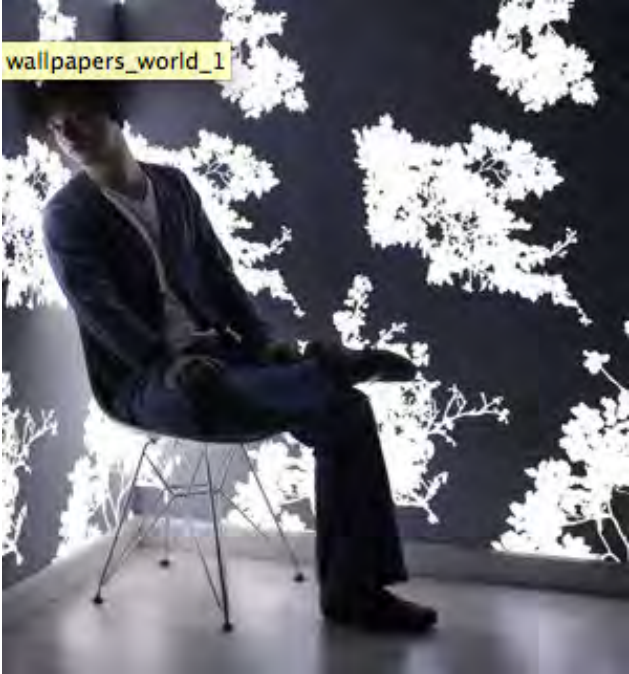
rollstick 1

Eco Factor: Concept charger harnesses kinetic energy for electricity. With billions of people in developing and under-developed nations still in need of a few watts to illuminate their homes, designers all over the world have started developing machines that are small, cheap and could generate electricity with a minimum of fuss. Katarzyna Bazylczyk is one such inventor who has tried to solve the energy problems of people living in the rural areas of Africa, with a product she calls the RollStick.



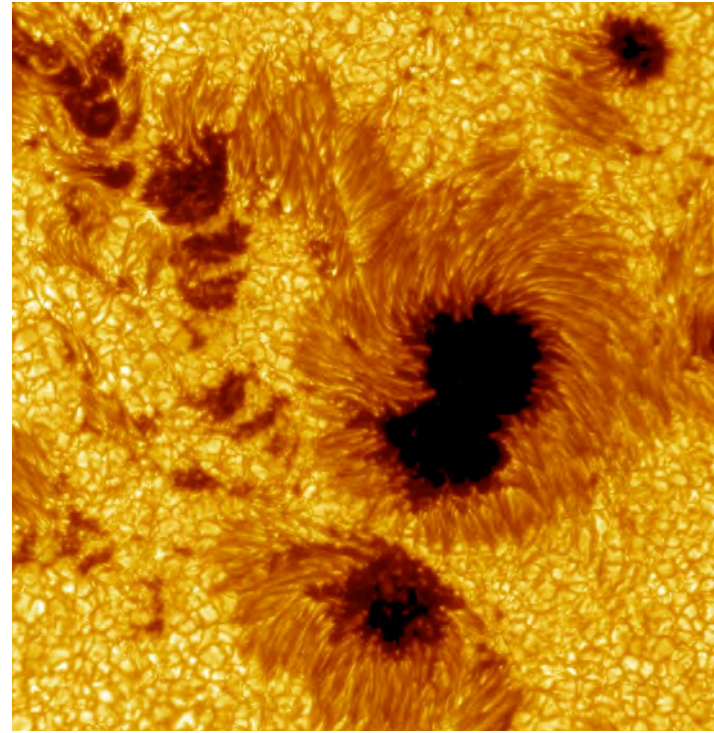
Water

Capillary movement along the windows/walls/floors to represent water levels/usage within the building



Energy (solar, geothermal)

An installation occupying the space above the Action Center, changing color and intensity to reflect the building's energy production/consumption



Firetables

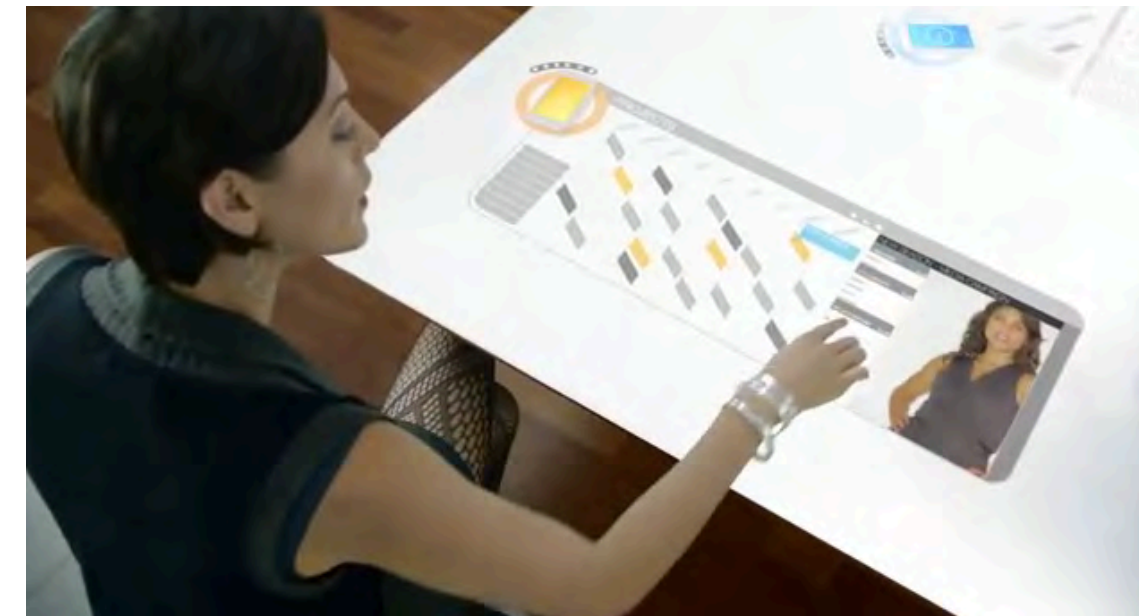
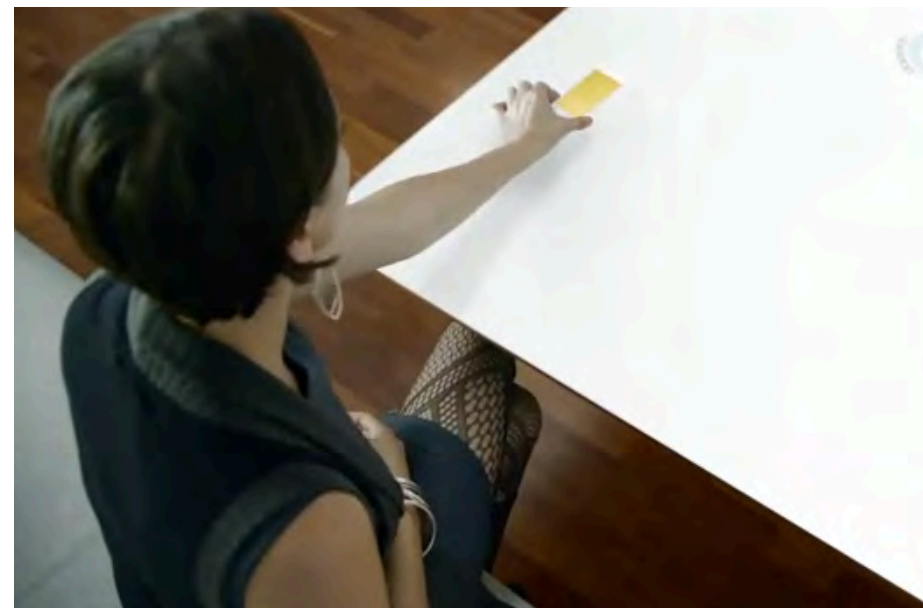
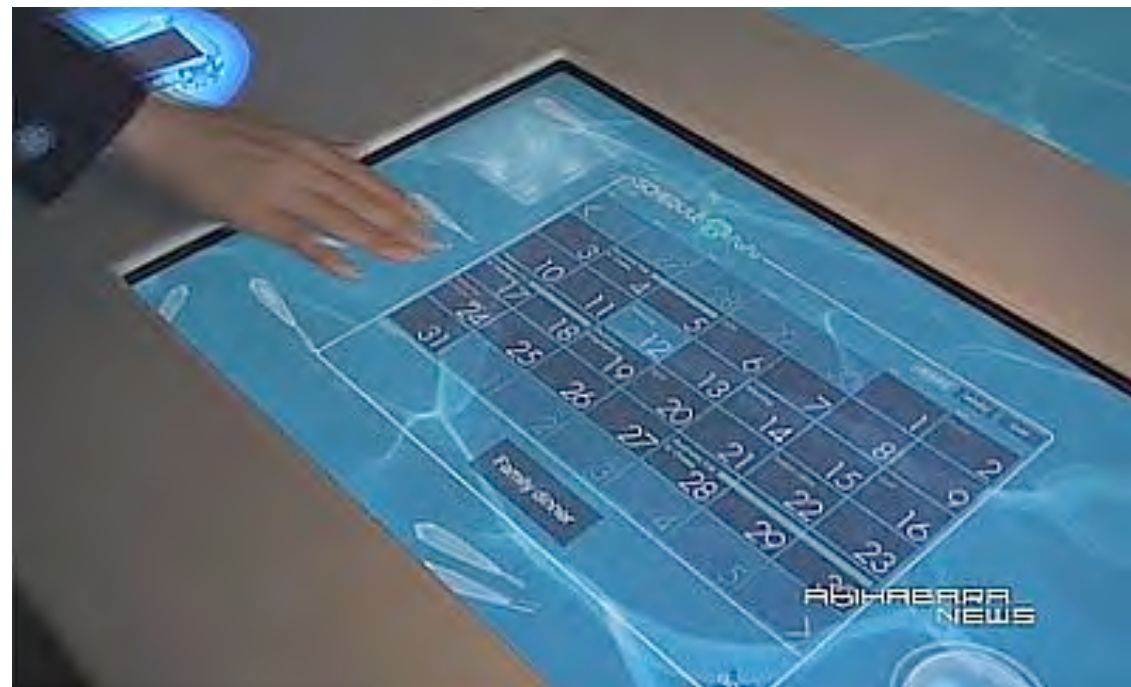
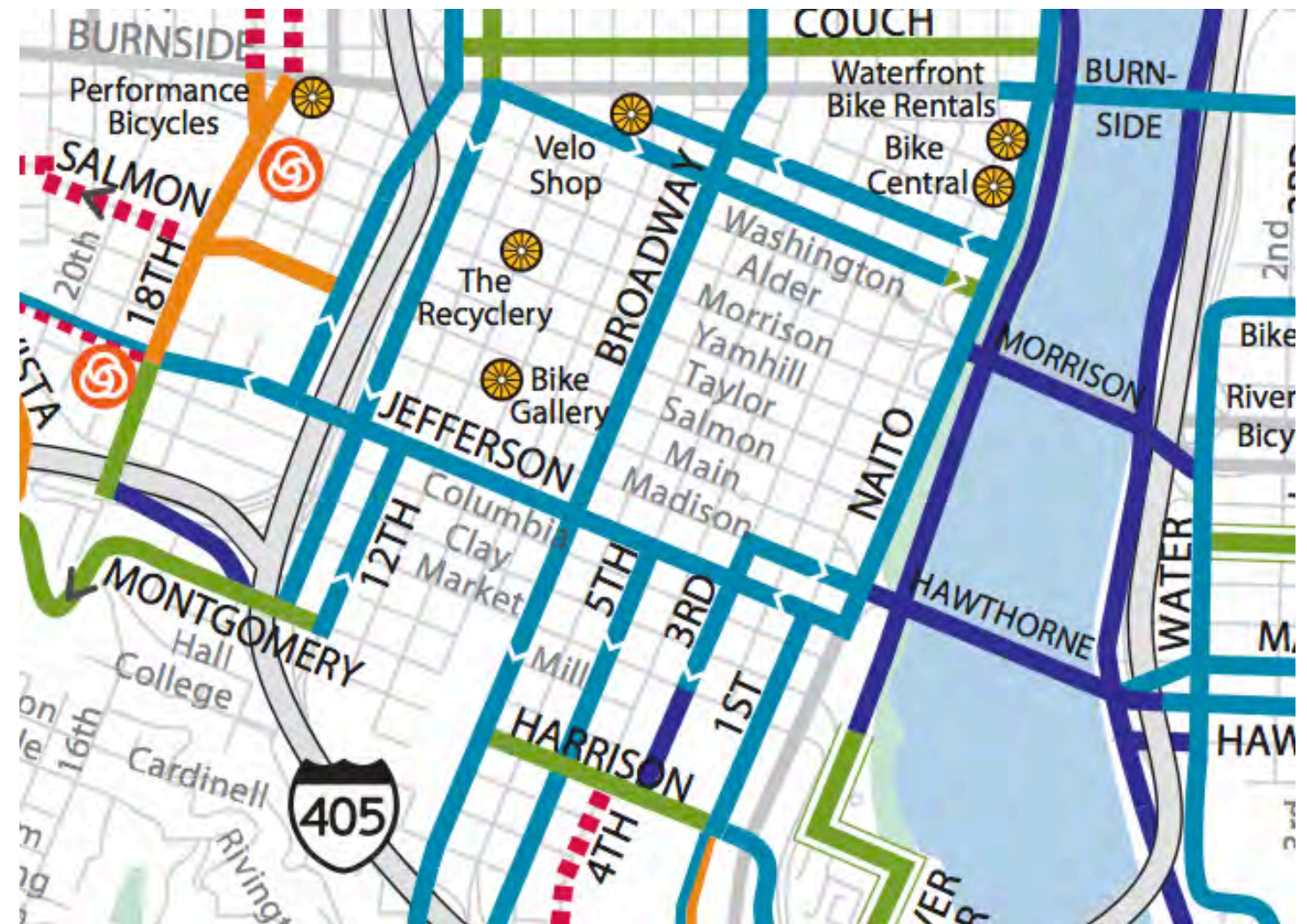
LED firepits for people to gather...like mankind has always done.
Inside and outside, they grow warmer/more active, the more people use them



Firetables

Another way to communicate information about the building, and to encourage people to explore Portland, and to make changes in their lives.

A place to capture and share feedback.



Seasonal exhibits

We want to tell each seasonal theme from different perspectives, showing how different stakeholders are connected

WATER

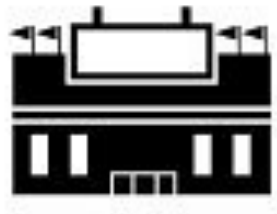
ENERGY

WASTE

FOOD

TRANSPORT

ETC



personal



community



business



osc



portland



cities

ENERGY

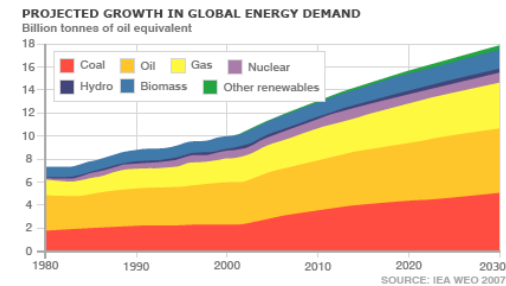


personal community business osc portland/or cities



solarize portland

Panasonic



FOOD



personal community business osc portland/or cities



WATER



personal



community



business



osc



portland/or



cities

