

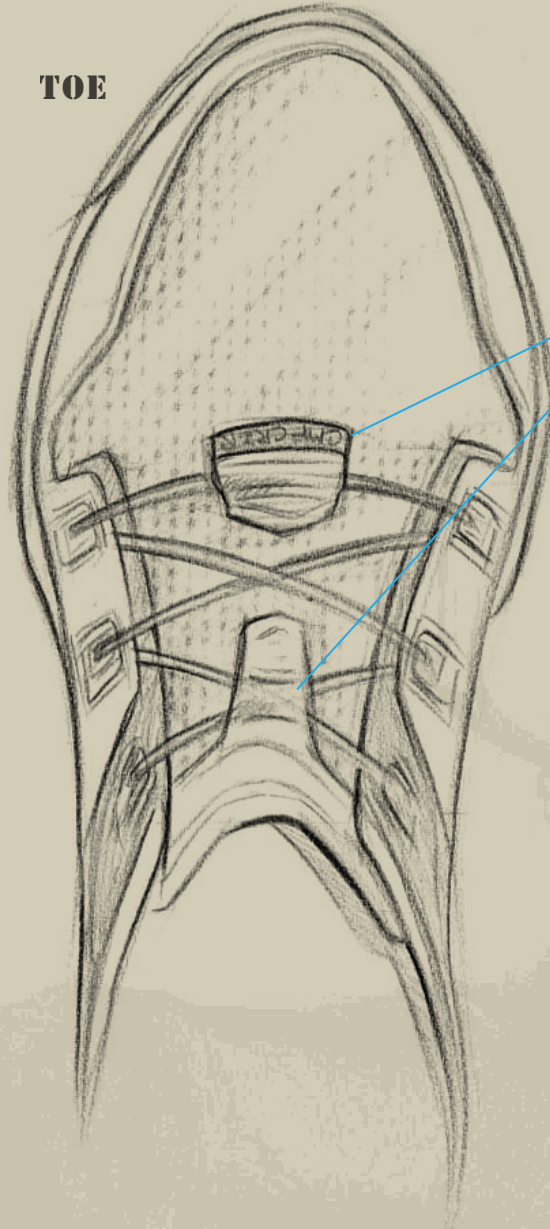


CAMP CRUISER

UNDER ARMOUR

- + EASILY PACKABLE COMFORT CAMPSHOE
- + LIGHTWEIGHT AND FLEXIBLE CONSTRUCTION
- + COLLAPSIBLE HEEL FOR SLIP-ON ACCESS

TOE



LACE ANCHOR POINTS

EYELET CUTOUT ZONES MAINTAIN LOW PROFILE SURFACE

LIGHTWEIGHT/BREATHABLE MESH

EMBOSSING UPPER PANELS ALLOWS FOR INCREASED FLEXIBILITY/FOLDABILITY

STITCH-AND-TURN HEEL CONSTRUCTION

DURABLE METAL EYELETS



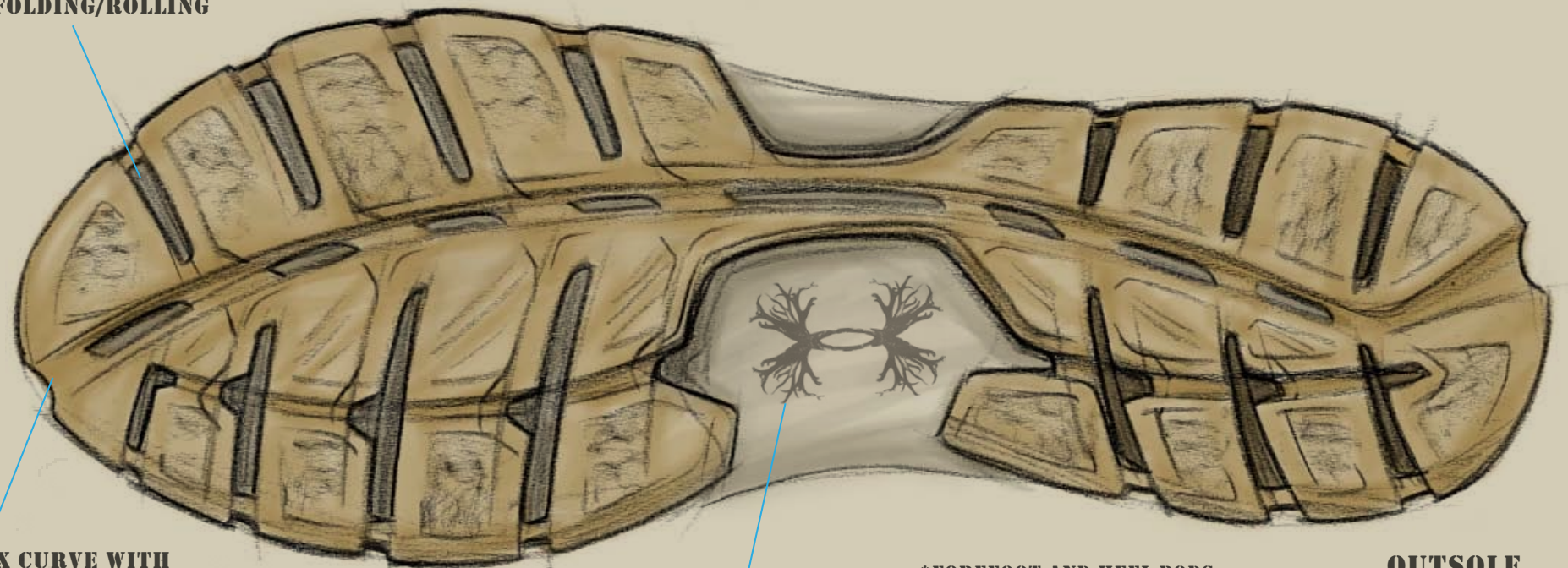
UA-CC

UNDER

CROSS CUTOUTS FOR EASY FOLDING/ROLLING

LATERAL

NATURAL FLEX CURVE WITH CUTOUTS DOUBLES AS FOLD LINE



ETCHED SHANK "ANTLER" LOGO

- *FOREFOOT AND HEEL PODS CONNECTED BY SHANK BRIDGE
- *MAXIMUM FLEXIBILITY
- *REDUCED WEIGHT
- *SIMPLIFIED CONSTRUCTION

OUTSOLE

CH