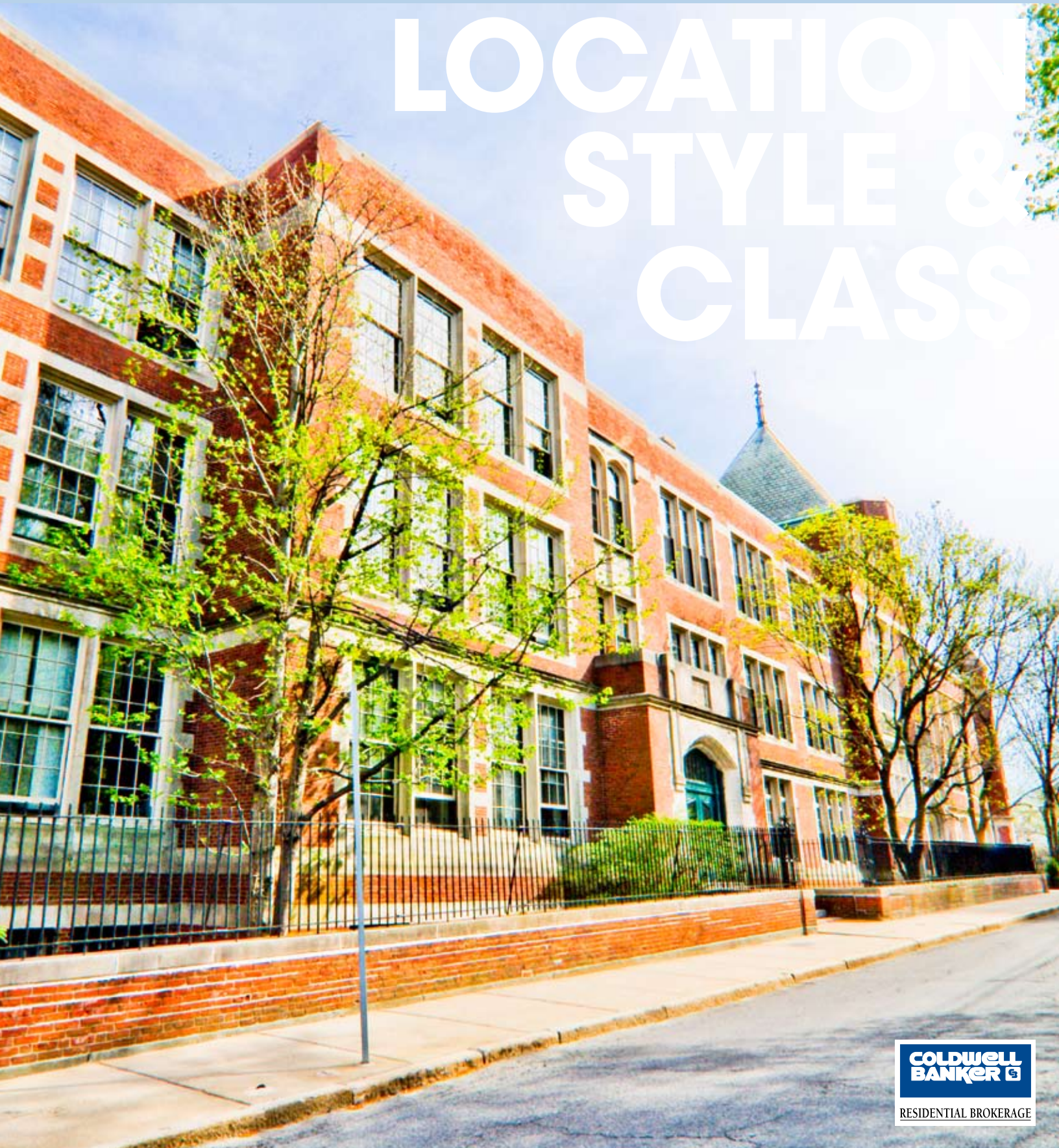


SUMNER HILL CONDOMINIUMS

LOCATION STYLE & CLASS



WWW.SUMNERHILLCONDOMINIUMS.COM
76 Elm Street • Jamaica Plain, MA • 02130



WELCOME BACK TO SCHOOL...

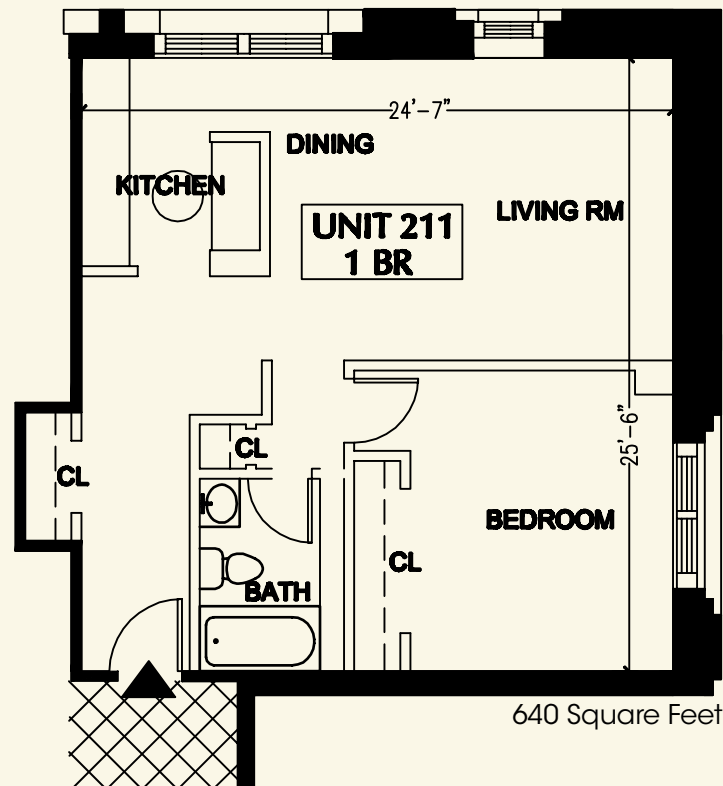


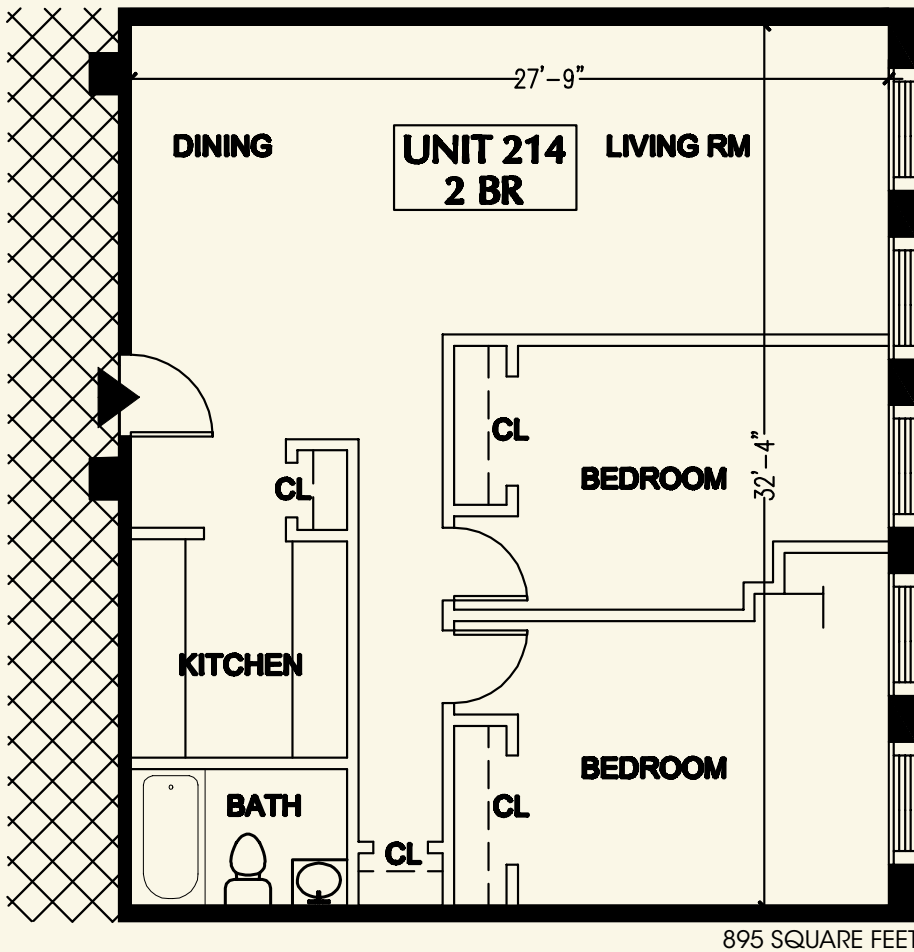
Rumors once ran rampant in these halls, but now, this is where your real story will begin.

Sitting high atop of Jamaica Plain's Historic Sumner Hill, the Sumner Hill Condominiums offer a combination of old world charm with modern living amenities. Originally the Jamaica Plain High School, this brick Tudor Revival building is considered a Boston architectural gem.

Enough about history ... schools out! It's time to purchase the modern condo you've dreamed about since High School.

Soaring ceilings with windows to match, fantastic sun exposures and views, personalize your unit with select finishes. Some people are meant to live in simple rectangles. Not you. Your life is artful, fresh, flexible and open.





FEATURES AND AMENITIES INCLUDE:

- 10' to 13' ceilings
- Oversized Windows
- Sleek (European) Kitchen Design
- Stainless Steel Appliances
- Bamboo or Green-Engineered Floor Systems
- Internet/Cable Ready
- Gorgeous city views
- Recycling
- Individual Unit Climate Control
- Off-Street Parking
- Professional Management
- Minutes to Downtown Boston
- Garbage disposal chutes on each floor
- Nationally Registered Neighborhood
- Close proximity to the Green St T

You have studied hard, so now it's time to live a little. Here are just a few of the hot spots awaiting you down the block:

Centre Street Café: Providing a healthy choice of meals and hosting one of JP's best brunches, all prepared with locally grown organic ingredients.

JP Seafood Café: Savor the freshest sushi and fish ... without catching it yourself.

Wonder Spice Café: When you need just a little bit of spice.

Canto 6 Bakery & Café: European pastry at its finest and tastiest.

Ten Tables Restaurant: Best of Boston! So good they had to open a second location!

Bon Savor: Paris is just down the block with this French Bistro.

JP Licks: You've never tasted ice cream until you try JP Licks.

Team Trivia: See if you've still got it! Which food additive is named after the capital of French Guyana? Know the answer? ... Then bring along your friends to one of JP's coolest pubs for trivia night - *Brendan Behan, Costello's, Jeanie Johnston and James's Gate.*

Culture: Take in a show at the "*Footlight Club*" or view the local talent during First Thursdays.

Shopping: stop by one of the local shops that are a stroll away: *Boing!, Fire Opal, Boomerangs, George's Shoes, City Feed, Harvest Co-op, Hatched, Salmagundi.*

If you're looking to unwind or windup, the answer is here!

LOCATION, STYLE & CLASS

LOCATION.



Real Estate 101: Location, location, location.

In the heart of Jamaica Plain, the Sumner Hill Condominiums are three blocks to Green Street T station and just a short distance from some of Boston's greatest outdoor offerings:

Feel like boating, biking, running, feeding the ducks or just promenading at your leisure – **Jamaica Pond** is at your door step. Need to find some wildlife adventure? Try **The Franklin Park Zoo** with acres of beautifully landscaped parkland. How about taking the stress off after a long day at the office? Perhaps a stroll in the **Arnold Arboretum** with its 15,000 varieties of plant life from around the globe is the answer.

Got a "few minutes" before your next meeting – iron out your shot on the back nine at the **William J Devine Golf Course** in Franklin Park, considered one of the finest jewels in "**Olmstead's Emerald Necklace**" (even golf legend Bobby Jones practiced here).

Still need more adventure? While Jamaica Plain has its own vibe, sometimes Boston beckons. Try 11 minutes to Back Bay Station via the Orange line and you're in the mix. If you desire a more athletic route ... why not navigate the 5 mile path in the **Southwest Corridor Park** which will put you in the heart of Boston and beyond via a 20-minute bike ride.

OFFERED BY: **Michael Dorion**
617.470.4930
Michael.Dorion@NEMoves.com



Juan Murray
617.721.0961
Juan.Murray@NEMoves.com



713 Centre Street
Jamaica Plain, MA 02130
617.522.4600
www.NEWENGLANDMOVES.COM

WWW.SUMNERHILLCONDOMINIUMS.COM
76 Elm Street • Jamaica Plain, MA • 02130

Information about the property described above was provided solely by seller(s) without verification by the broker(s) therefore broker(s) is/are not responsible for the accuracy of the information contained herein. Buyer should take any and all steps necessary to verify said information. Offering is subject to prior sale, price change or withdrawal without notice. ©2010 Coldwell Banker Real Estate LLC. Coldwell Banker is a registered trademark licensed to Coldwell Banker Real Estate LLC. An Equal Opportunity Employer. Equal Housing Opportunity. Owned and operated by NRT LLC.

