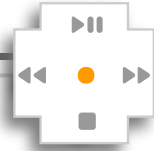
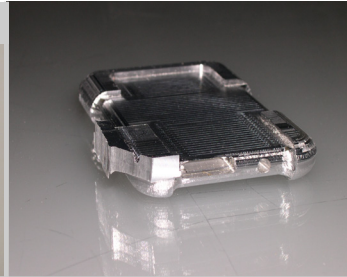


sequence

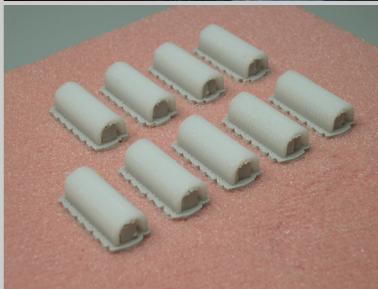
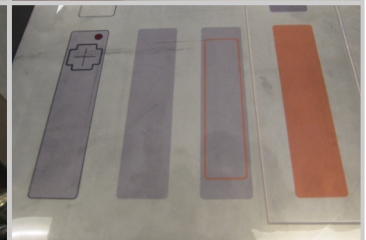
process



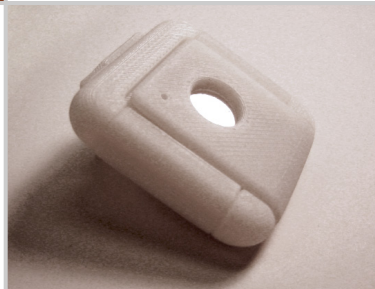
SLA models were made by exporting a Rhino model to stl format. A model with no naked edges was critical for the file to run successfully.



Rough aluminum parts were made by exporting a Rhino model to iges format & cutting it out with a CNC machine.



Having access to the SLA process enabled me to produce several pairs of handles quickly, and to do quick iterations of the screen design.



The overlay material and colors were inspired by mens clothing, so as to blend well with their environment. A variety of opaque and translucent materials were tested. The final combination was chosen for its rugged, wearable appeal.