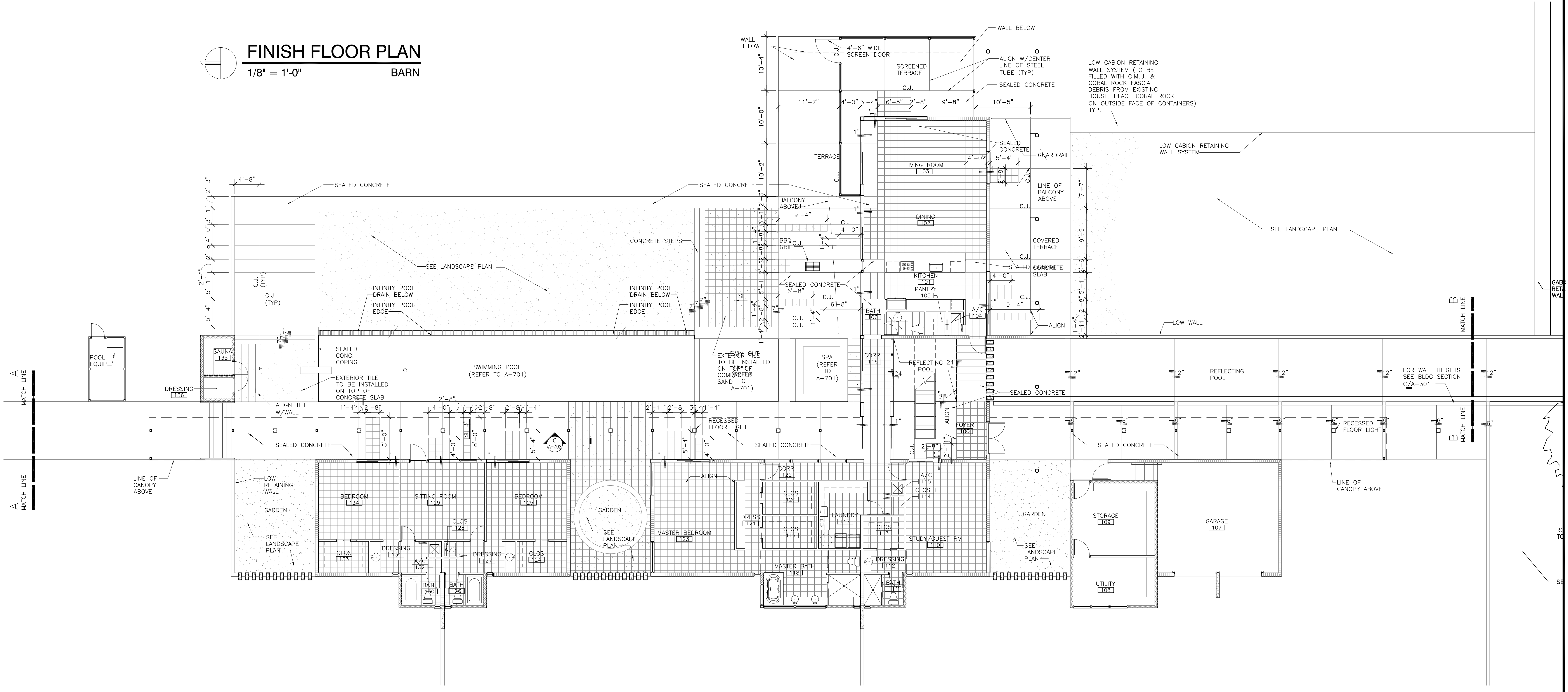


FINISH FLOOR PLAN
1/8" = 1'-0" BARN



FLOOR FINISH LEGEND

MATERIALS	
16" X 16" MARBELLA EXTERIOR TILE	
16" X 16" MARBELLA INTERIOR TILE - HONED	

FINISH FLOOR PLAN
1/8" = 1'-0" MAIN HOUSE

MATEU ARCHITECTURE INC. 1400 S.W. 15TH AVENUE, SUITE 100 PALM BEACH, FL 33411
 ARCHITECTURE: 561.833.8338 PLANNING: 561.833.8338
 #06000322

RONEY J. MATEU
 AR 0008220

PROJECT CAINE PE
 M.E.P.
 730 N. VICTORIA PARK RD.
 FORT LAUDERDALE, FL 33304

PMA CONSULTING ENGINEERS
 STRUCTURAL ENGINEERING
 7188 S.W. 47 STREET - SUITE B-4
 MIAMI, FLORIDA 33155

LANDSCAPE DESIGNER
 JEFFREY FIGUEROA MANUEL
 8838 POPPARD PLACE
 ORLANDO, FLORIDA 32827

CONSULTANT
 CIVIL ENGINEERING
 ADDRESS
 CITY & STATE

HAD-A-FARM ASSOCIATES, INC.
 A FLORIDA CORPORATION
 13341 STIRLING ROAD
 SOUTHWEST RANCHES, FL 33330

CASA HAD A FARM

NEW RESIDENCE

MATEU ARCHITECTURE INC.
 THIS DRAWING IS THE PROPERTY OF MATEU ARCHITECTURE INC. UNLESS OTHERWISE PROVIDED FOR BY CONTRACT, THE CONTENTS OF THIS DRAWING ARE CONFIDENTIAL AND SHALL NOT BE TRANSMITTED TO ANY PARTY EXCEPT AS AUTHORIZED BY THE ARCHITECT (ENGINEER OF RECORD).

PHASE
 100% CONSTRUCTION DOCUMENTS

FILE NAME:
 M:\0510\CD\SHEET\ARCHA-105.dwg
 PROJECT NO:
 MA 0510
 DRAWN BY:
 BMDG
 CHECKED BY:
 GA
 ISSUE DATE:
 04.27.2007
 REVISIONS

SHEET TITLE
FINISH FLOOR PLANS

SHEET: **A-105** OF: