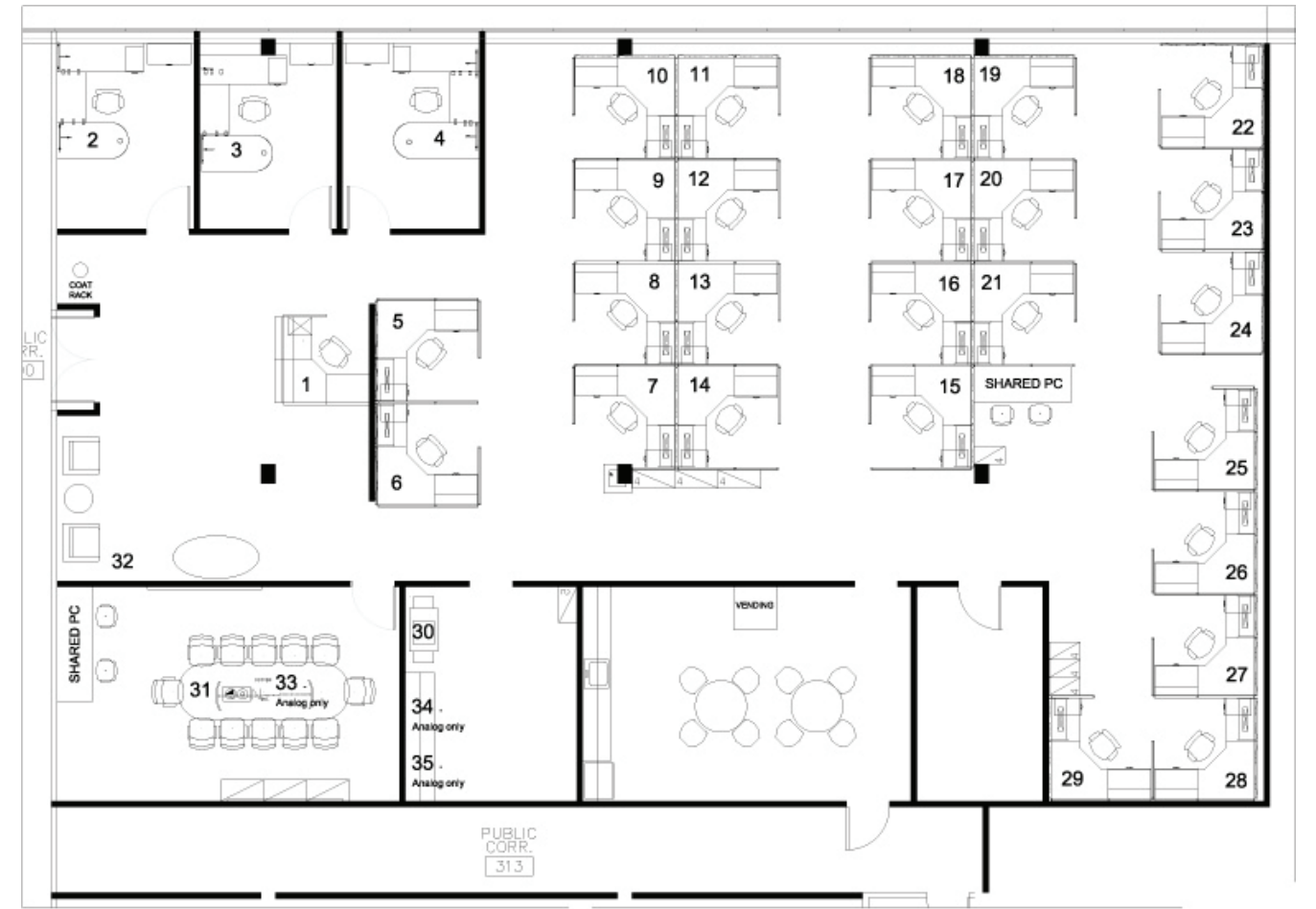




Indianapolis, IN



Lyndhurst, NJ

## Indianapolis & Lyndhurst New Office Builds

These projects show renovations that took place in order to re-organize a space that no longer was able to hold all of the employees and their files that were required to complete their daily responsibilities.

The Indianapolis office was a new office space, this involved relocating all employees and their office contents to the new space. I feel that the most efficient layout was implemented in order to accommodate all employees in this office, we well as a conference room, break room, print/fax area as well as storage space.

The Lyndhurst office was also a new build. The employees of this office had outgrown their existing space and needed more room. This new office gave them the space they needed. They were all given individual cubicles, however there was also a shared PC space allocated for the sales team to use.

Haworth product was used to outfit both of these offices, the pieces came from the existing offices as well as company warehouses.