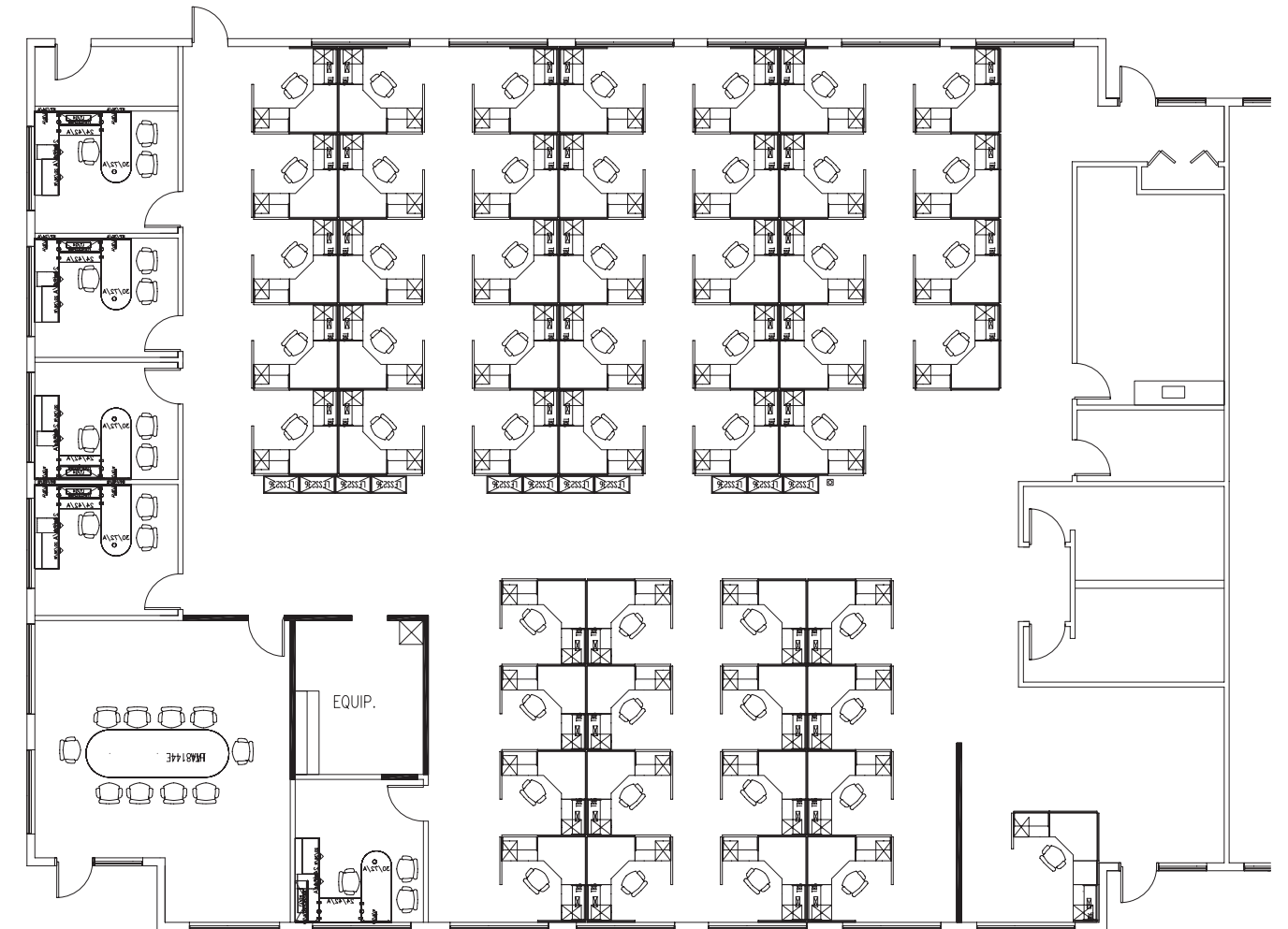


BEFORE



AFTER

Lincoln, RI & Cumberland, RI Office Consolidation

This project involved the consolidation of two separate offices, with a total of 50 employees. The Lincoln, RI office was renovated in order to efficiently fit all employees from both the Lincoln and Cumberland offices, as well as accommodate for future growth in headcount.

The original Lincoln office was chosen to be renovated, while the Cumberland office would be used as a working office during the remodeling process in Lincoln. I redesigned the Lincoln office to be a more conducive workspace. The remodeling was completed in two phases in order to allow certain employees to remain in the office that needed to stay there. I worked with outside vendors for the construction of the space and moving of the employees and their office contents.

I took a space that was originally only able to hold 40 employees, and reconfigured the offices and cubicles, with new and existing pieces, to now hold 56 employees. I also took into account the positions employees help and if they were qualified for walled offices or cubicles. This was a major factor in the need to remodel this office. The furniture, pieces and parts, used were strictly Haworth product.