

حكومة دبي

GOVERNMENT OF DUBAI

هيئة الطرق والمواصلات  
ROADS & TRANSPORT AUTHORITY

RTA

## Subjects for Practical Training



## Light Motor Vehicle Curriculum

1st Edition August 2011

# Preparation for Driving

## Familiarity With The Main Components Of The Car (External View)

Wheels / Tyres  
Exhaust System  
Lights  
Fuel Tank  
Number Plate  
Side Mirrors  
Engine  
Windows



Familiarity with main components of the car (external view)

## Entering The Vehicle

Safety Aspects Of Entering The Car (If Exposed To Traffic)

Unlocking And Opening The Door

Opening The Door Without Damaging The Bodywork Or Other Property



Entering the Vehicle



## Familiarisation With Instrument Panel

Fuel Gauge

RPM Counter

Speedometer

Engine Temperature Gauge

A/C Settings

Hazard Lights

Head Lights Setting

Indicators

Windscreen Wiper Settings

Horn



Familiarisation with instrument panel

## **Cockpit Drill And Visibility**

Door Check (Including Child Locks)

Adjustment Of Seat

Steering Wheel Position

Head Restraints

Seatbelt

Mobile Phone Switched Off

Clean Windscreens / Mirrors

Mirrors



Cockpit drill and visibility

## Passenger Safety And Load Security

Seatbelts

Head Restraints

Maximum Passengers / Seats

Secure Loads



Passenger safety and load security

# Basic Vehicle Operating & Manoeuvring

## **Familiarisation With (Hand & Foot) Controls**

Foot Controls:

Accelerator / Brake, Clutch

Hand Controls:

Steering Wheel Gear Box, Handbrake



Familiarisation with (Hand & foot) controls



## **Safety Precautions & Turning On The Engine**

Securing The Vehicle (Handbrake)

Securing The Vehicle (Gear)

Steering Lock

Turning On Engine



Safety precautions & turning on the engine

## Instrument Check

Gauge Check

Warning Lights And Sounds

Fuel



Instrument check

## The Need For Effective Observation

Understand The Importance Of Effective Observation And The Need To Communicate Your Intentions To Other Road Users



The need for effective observation

## **Moving Off And Stopping (Level Ground)**

Friction Control / Experiencing The Biting Point (Manual Cars)

Ensuring It Is Safe To Move The Car

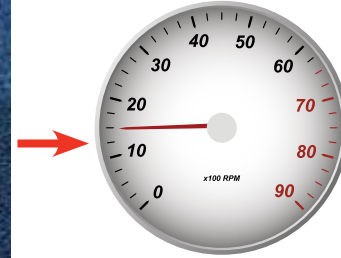
Combined Use Of Hand / Foot Controls To Move The Car  
(Without Rollback) And Stop The Car

Activation / Deactivation Of Hazard Lights After Stopping And Before Moving  
Off Again

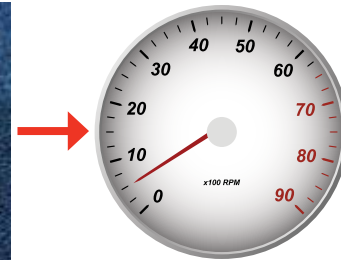
1



2



3



4



Moving off and stopping (ground level)

## **Stall Management (Manual Vehicles)**

Preventing A Stall By Pressing In The Clutch

Securing The Vehicle, Alerting Other Road Users, Re-Starting Engine,  
Observing And Communicating Before Moving Off Again

1



2



3



Stall management (manual vehicles)

## **Securing The Vehicle (From Inside And Outside)**

**Gear Selection For Parking, Securing The Vehicle (Handbrake),  
Turning Off Engine, Locking The Vehicle From Outside**



Securing the vehicle (from inside and outside)

## Exiting The Vehicle (Including Passengers)

The Importance Of Effective Observation Before Exiting,  
For Yourself And Passengers



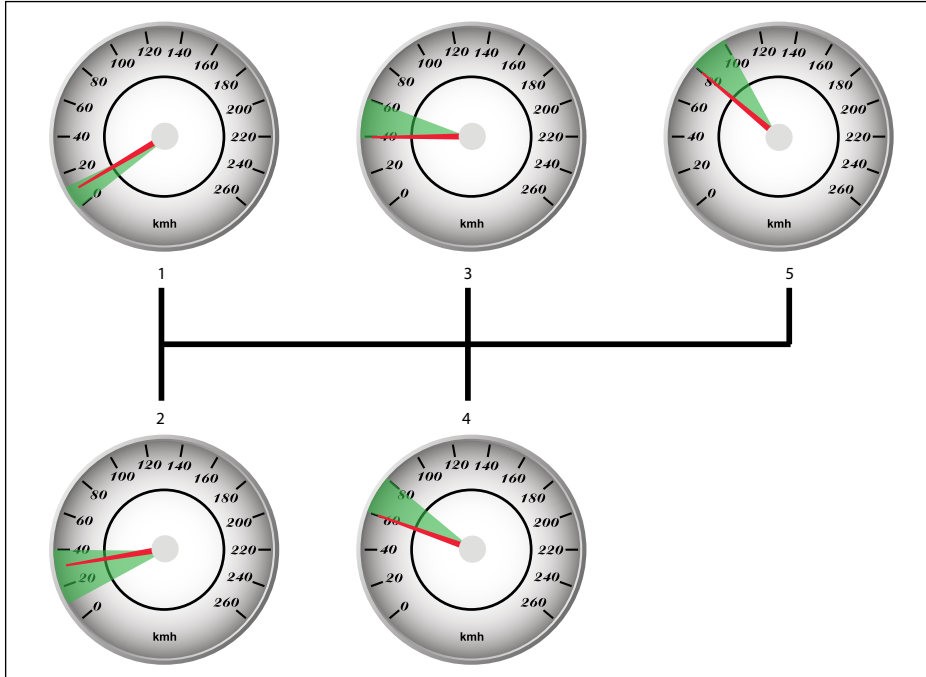
Exiting the vehicle (including passengers)

## **Gear Changing (Manual Cars)**

Know When To Change Gear

Changing Into 2nd Gear

Managing Steering When Changing Gear



Gear changing (manual cars)

## Steering And Positioning

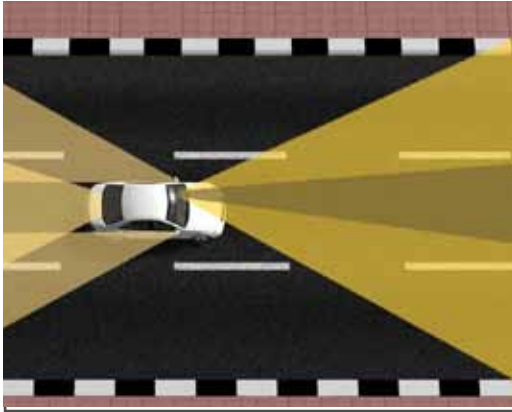
Steering Technique

Looking Ahead And To The Sides

Positioning Within The Lane

Steering And Positioning Straight

Steering And Positioning On Bends (Left / Right)

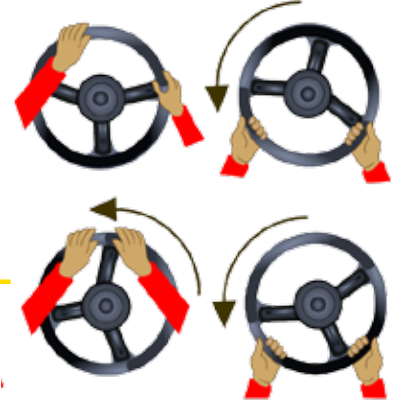
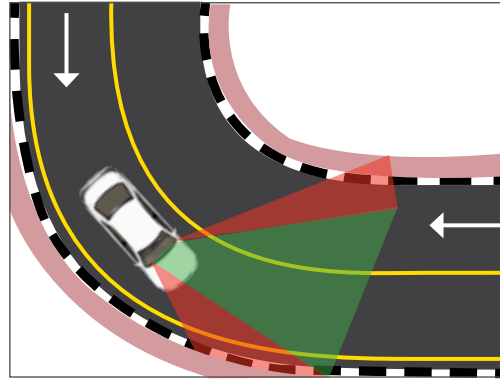


A

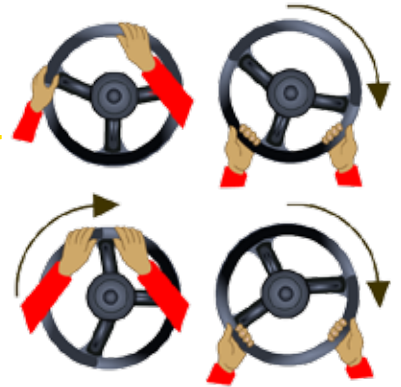
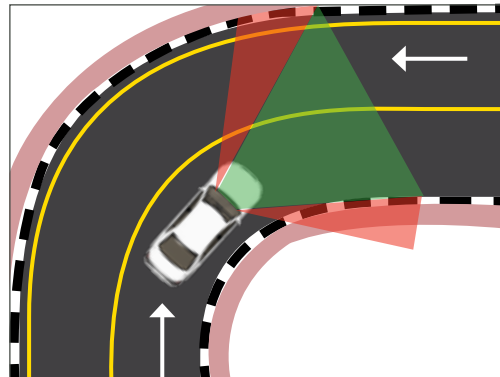


### Steering and positioning

B



C



## Slowing Down

Slowing Down By Releasing The Accelerator

Slowing Down By Pressing The Brake

Importance Of Rear Observation When Slowing Down



Slowing down

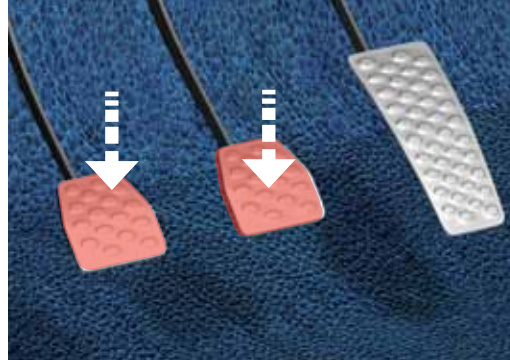
## **Stopping The Car At A Precise Spot**

Smooth Braking And Stopping At A Precise Spot

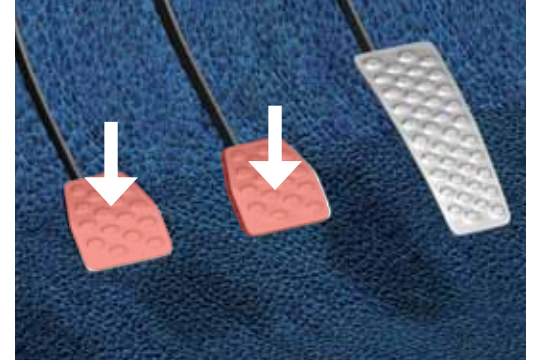
Importance Of Rear Observation When Stopping



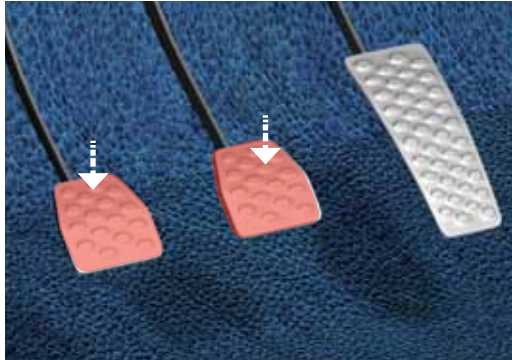
1



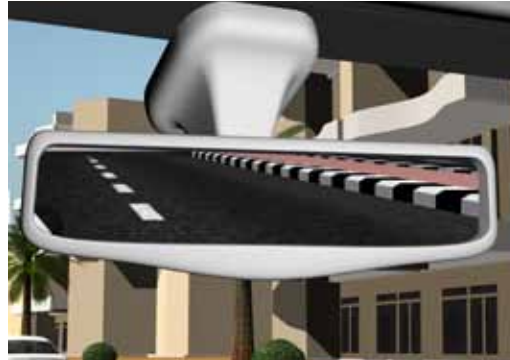
3



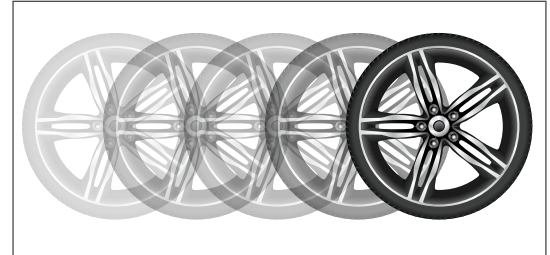
5



2



4



6

Stopping the car at a precise spot

# Driving in Two-Way Streets (40kmh)<sup>1</sup>

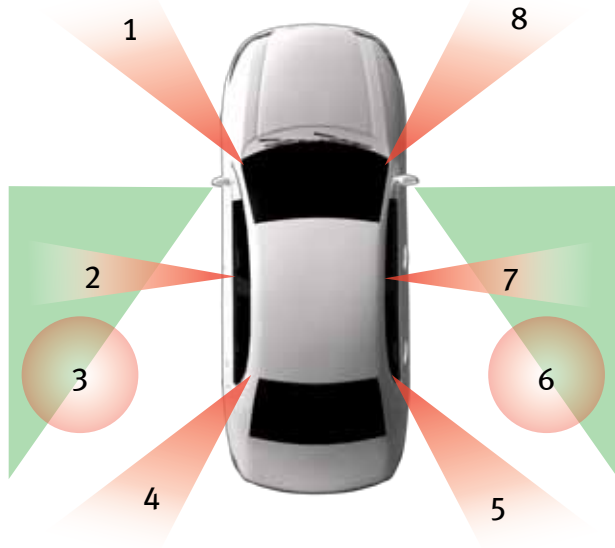
## **Blind Spots (Vehicle & Mirrors), Objects In The Mirror, Headchecks, Potential Hazards**

Know Where Your Blind Spots Are

Understand The Need For Effective Observation

The Risks Of Not Observing - Or Not Seeing - Before Manoeuvring

Potential Hazards: Cars Appearing Out Of Driveways,  
Children Crossing From Behind Parked Cars



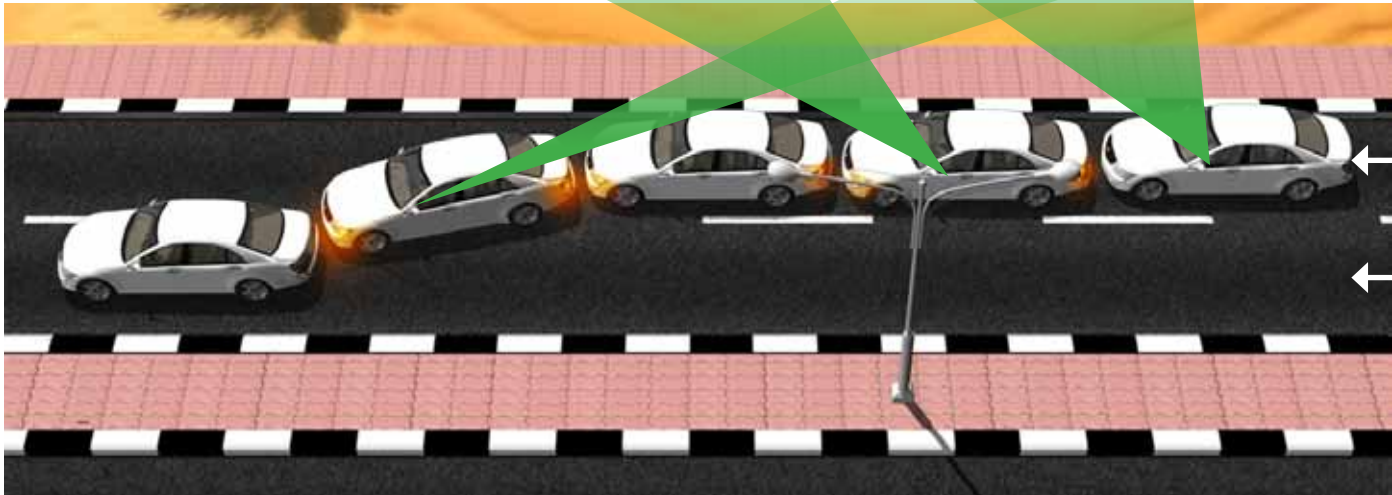
Blind spots (vehicle & mirrors), objects in the mirror, headchecks, potential hazards

## **Systematic Driving Procedures (Actively Looking For Information / Communicate Your Intentions / Move When Safe)**

Actively Looking For Information (Mirrors, Headcheck)

Communicate Your Intentions (Indicate) At The Appropriate Moment

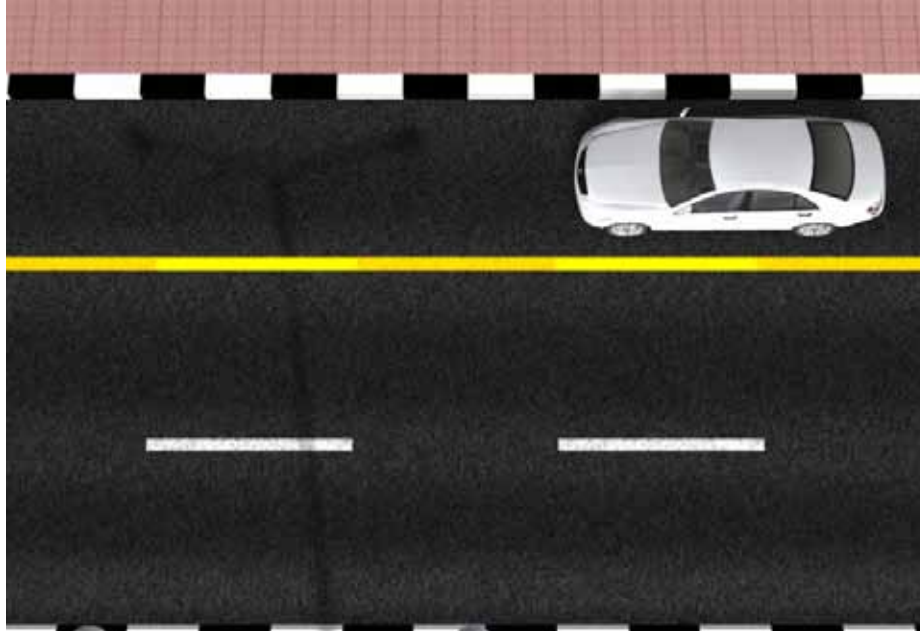
Only Move (i.e Change Your Speed Or Direction) When Safe To Do So



Systematic driving procedures (actively looking for information/communicate your intentions/move when safe to do so)

## **Pulling Out From The Side Of The Road**

**Mirrors - Headcheck - Signal - Manoeuvre When Safe - Mirrors - Look Ahead**

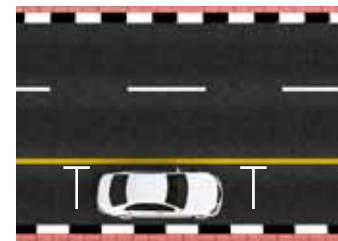
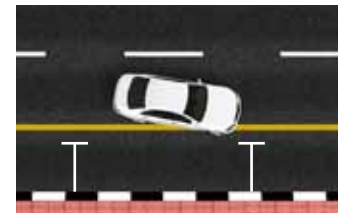
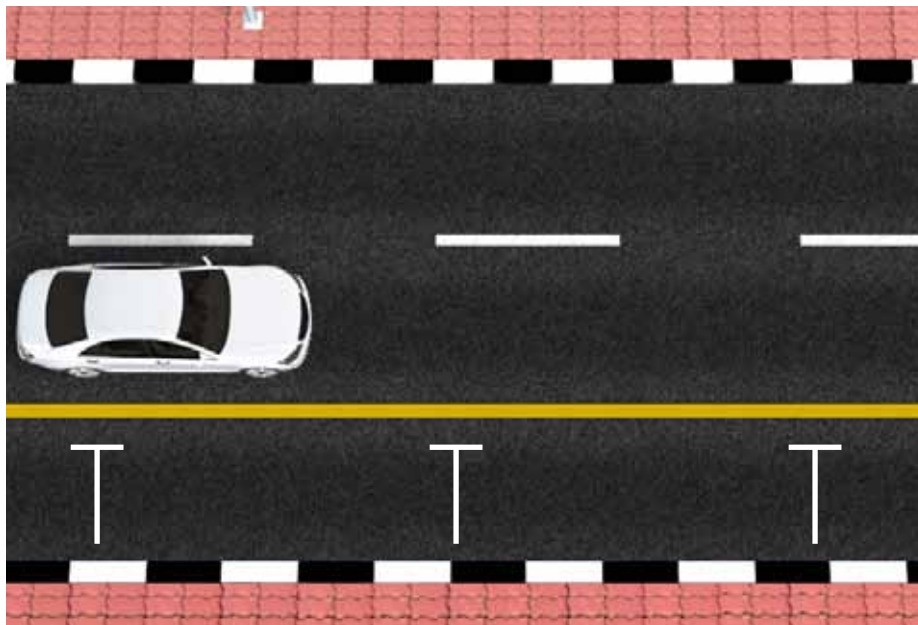


Pulling out from the side of the road

## **Pulling Over And Stopping**

Mirrors - Headcheck - Signal-Manoeuvre When Safe - Mirrors - Stop At A Precise Spot  
- Gear Selection And Secure The Car

Stopping In A Safe And Legal Place



Pulling over and stopping

## Passing Obstacles On The Roadside

Mirrors - Signal - Waiting Position (If Appropriate) - Manoeuvre When Safe And Considerate To Other Road Users

Understand That Oncoming Traffic Has Priority (If You Need To Cross The Central Road Markings)



Passing obstacles on the roadside

## Meeting Oncoming Traffic

Positioning Within Lane And Speed Adjustment  
When Passing Oncoming Traffic

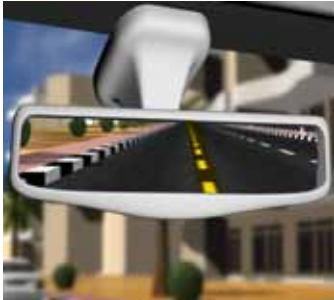


Meeting oncoming traffic

## Turning Into Side Roads (Left)

Approach Phase: Look (Identify Junction) - Mirrors - Signal - Positioning / Speed

Turning Phase: Gap Selection And Timing Of Approach  
(Turn Or Waiting Position) - Left Mirror Before Turning - Turn Left And  
Look Into Road - Mirrors On Entry Into New Road



Turning into side roads (left)

## Turning Into Side Roads (Right)

Approach Phase: Look ( Identify Junction) - Mirrors - Signal - Positioning / Speed

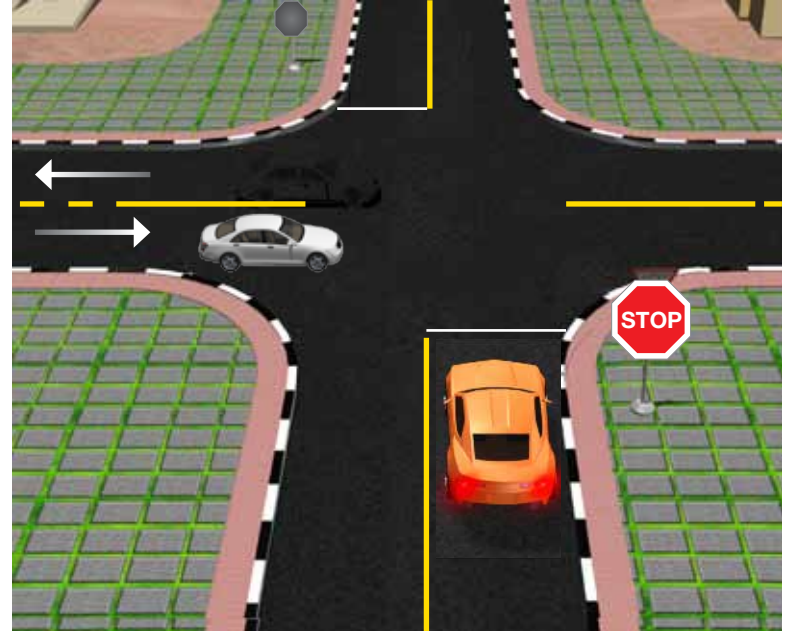
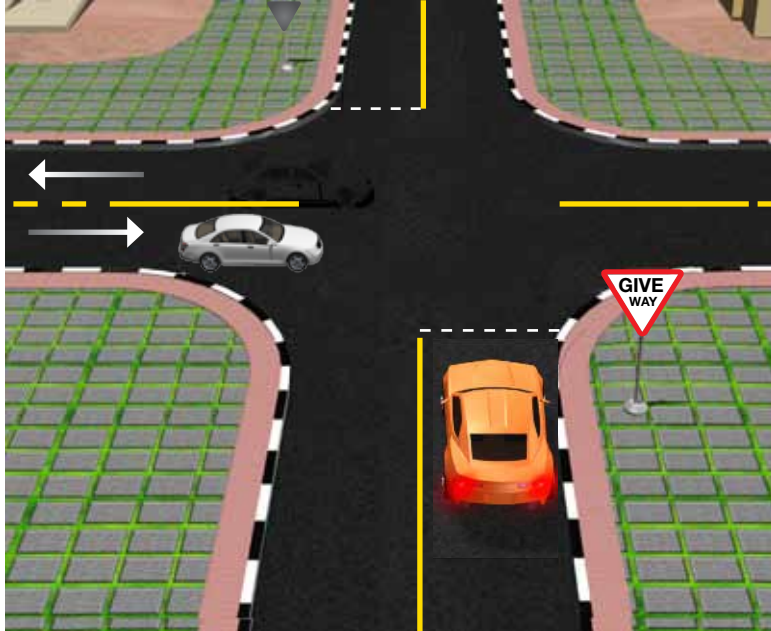
Turning Phase: Gap Selection And Timing Of Approach (Turn Or Waiting Position)Left  
Mirror - Before Turning - Turn Left And Look Into Road - Mirror On Entry Into New Road



Turning into side roads (right)

## Give Way, Stop Signs, Priority Rules

Understand The General Priority Rules At Junctions  
Know The Difference Between Give Way And Stop Signs



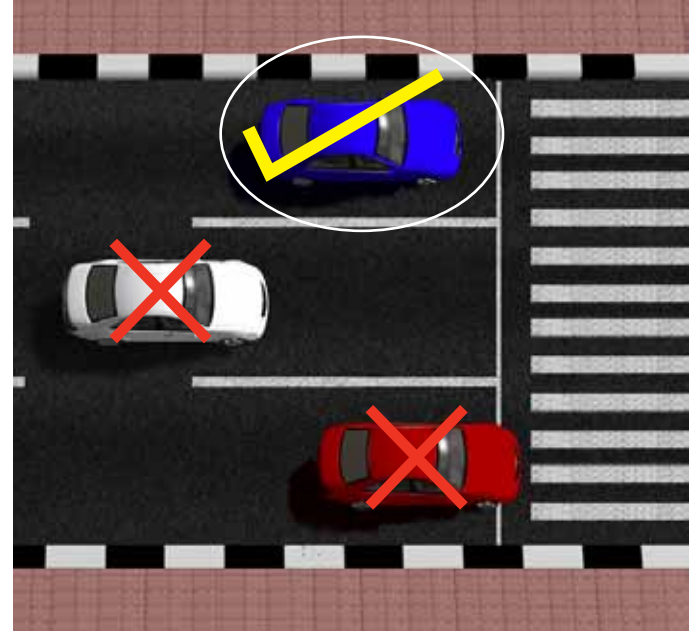
Give Way, STOP signs, priority rules

## **Pedestrian Crossings And Vulnerable Road Users**

Know The Rules For Pedestrian Crossings

Understand Why Vulnerable Road Users Are Particularly  
At Risk At Junctions

Understand The Function And Rationale Of Speed Humps



Pedestrian crossings and vulnerable road users

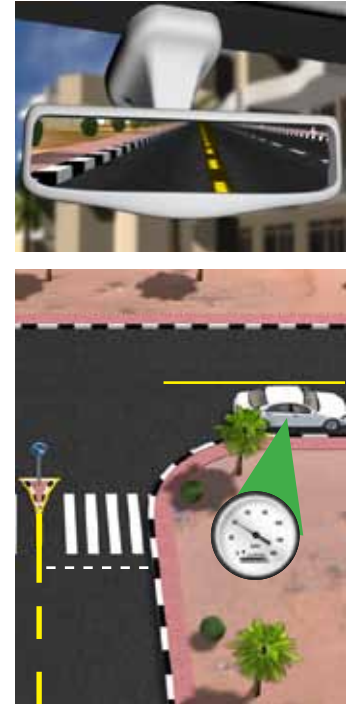
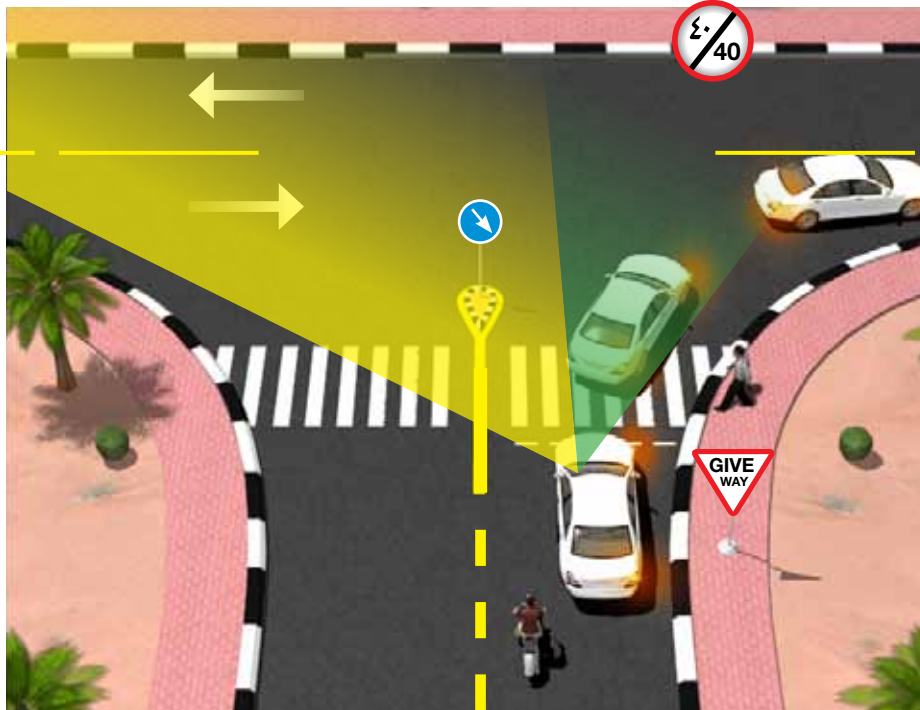
## Approaching & Emerging At T-Junctions (Right)

Give Way, Stop Signs, Pedestrian Crossings

Approach Phase: MSM PSL  
(Mirror - Signal - Manoeuvre, Positioning - Speed - Look)

Turning Phase (Emerging From Junction): Gap Selection And Vulnerable Road Users  
(e.g. Motorcyclists), 'Creep And Peep', If Visibility Is Restricted.

Exit Phase: Mirrors On Entry Into New Road- Pick Up Speed To Match  
The Traffic Conditions.



Approaching & emerging at T-junctions (right)

## **Approaching & Emerging At T-Junctions (Left)**

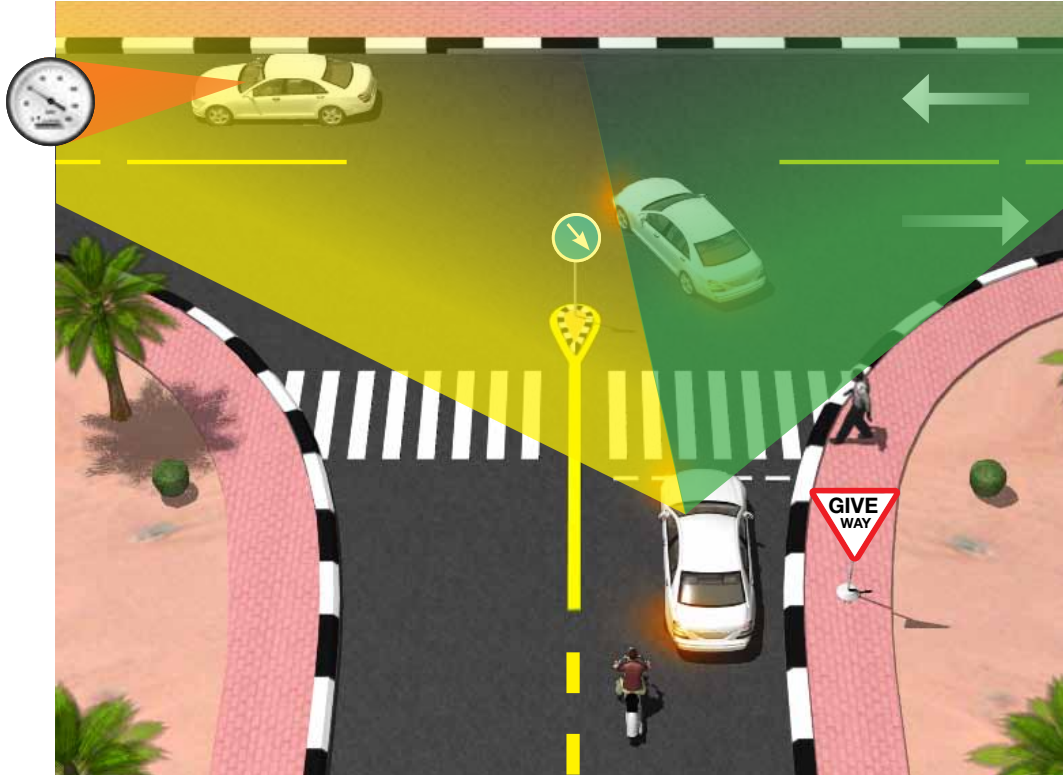
Give Way, Stop Signs, Pedestrian Crossings

Approach Phase: MSM PSL

(Mirror - Signal - Manoeuvre, Positioning - Speed - Look)

Turning Phase (Emerging From Junction): Gap Selection And Vulnerable Road Users  
(e.g. Motorcyclists), 'Creep And Peep', If Visibility Is Restricted

Exit Phase: Mirrors On Entry Into New Road- Pick Up Speed To Match  
The Traffic Conditions



Approaching & emerging at T-junctions (left)

## **Coping With Road Users Ahead**

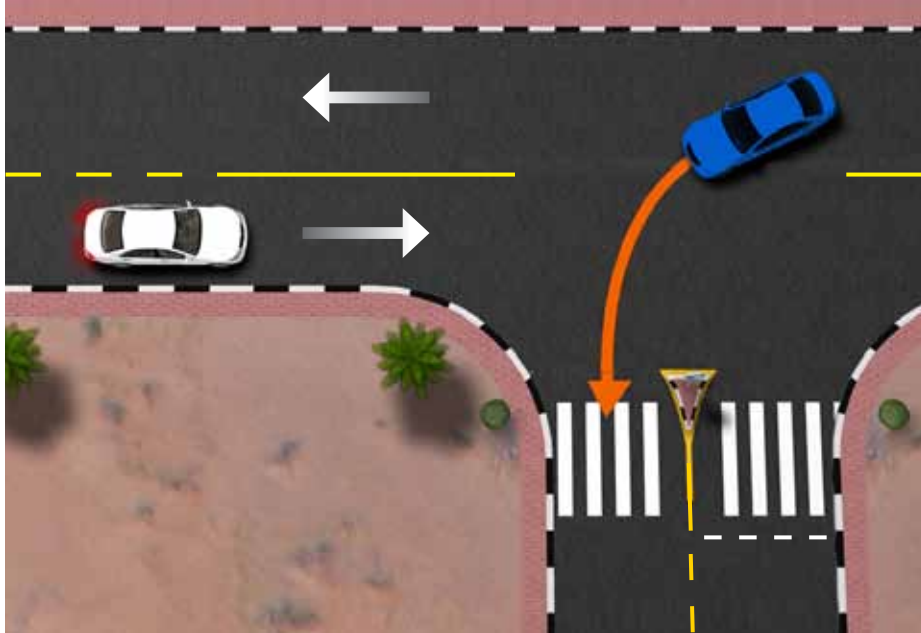
Traffic Emerging From Side Roads Ahead

Crossings Traffic (Oncoming Traffic Turning Left)

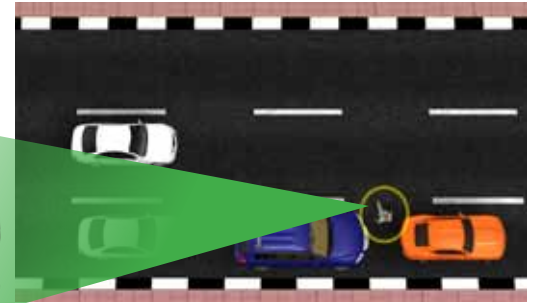
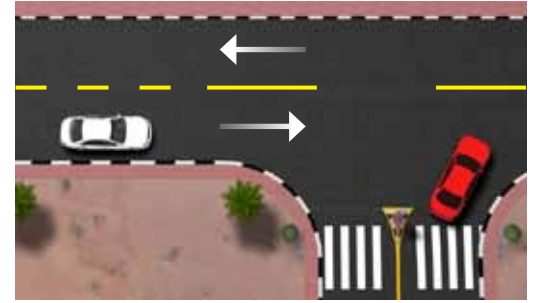
Traffic Emerging From Driveways, Garages  
(e.g. Residential, Industrial Areas)

Vulnerable Road Users (e.g. Pedestrians) Emerging From  
Parked Vehicles / On Roadside

Interpret The Intentions Of The Vehicle In Front (Slowing, Braking, Signalling)



Coping with road users ahead



# Driving on Multi-Lane Roads (60-80kmh)

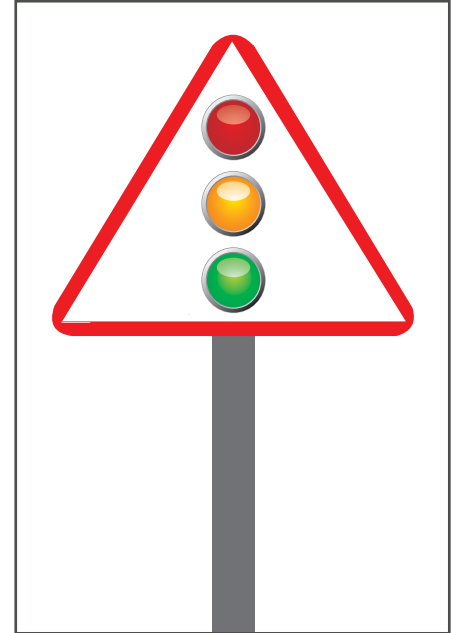
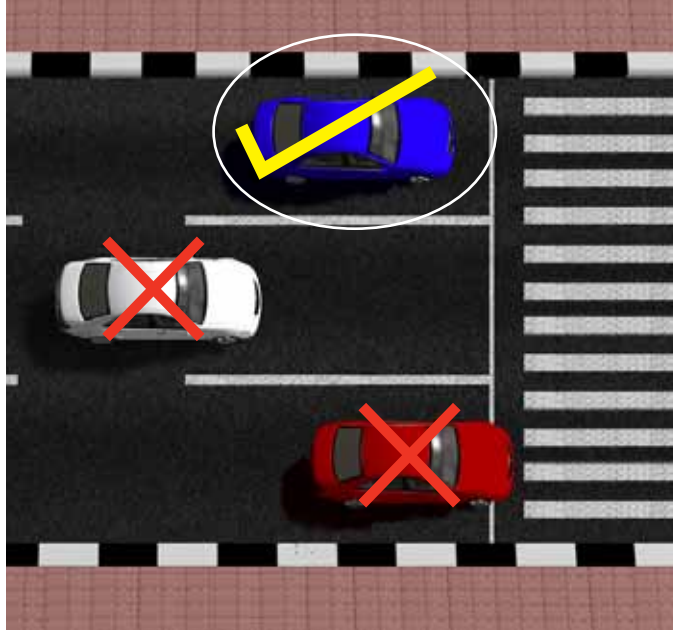
## **Driving Straight: Traffic Lights**

Know The Sequence Of Traffic Lights  
(Order Of Green, Amber And Red Lights),  
Flashing Amber = Malfunction (Caution)

Identify Traffic Lights Well In Advance

Check Mirror And Adjust Speed On Approach  
(‘Point Of No Return’ On Green Light)

Pedestrian Crossings



Driving straight: traffic lights

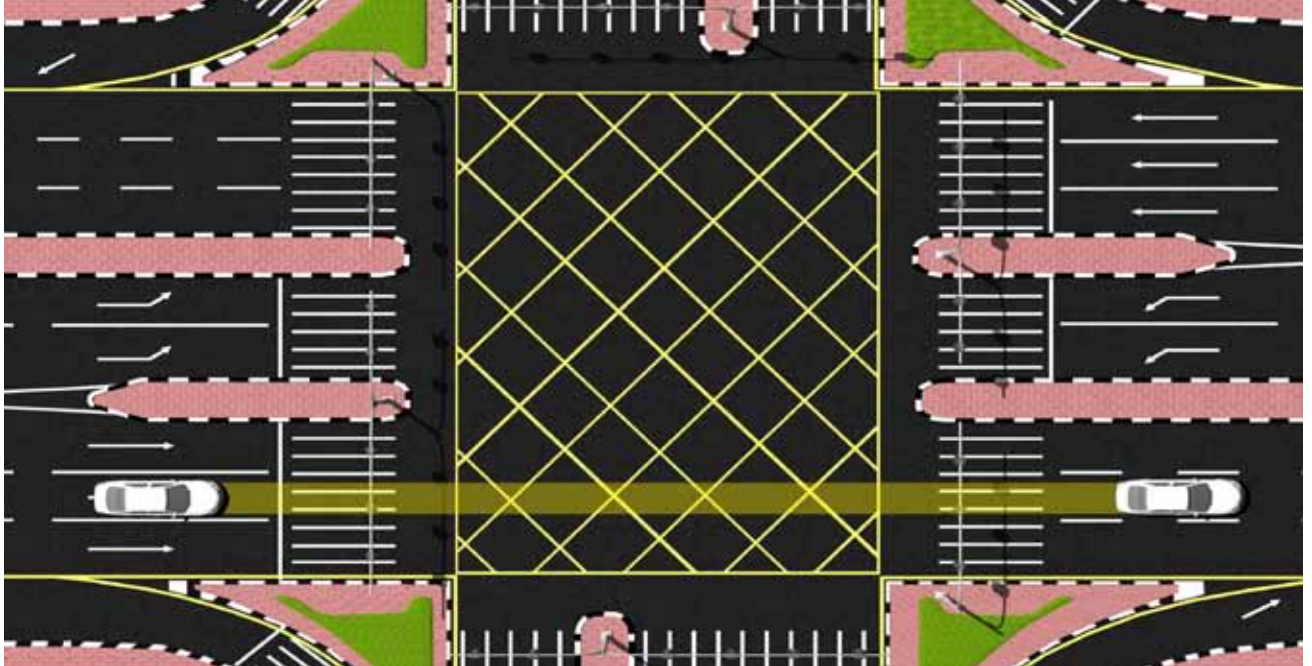
## **Driving Straight: Traffic Lights**

Box Junctions

Alignment Within Lane After Crossing Junction

Match Your Speed To The Prevailing Conditions

Risk Factors: Trying To 'Beat The Lights', Rear - End Shunt When Stopping Suddenly  
At The Lights, Beware Of Traffic Jumping A Red Light  
(From The Left Or Right)



Driving straight: traffic lights

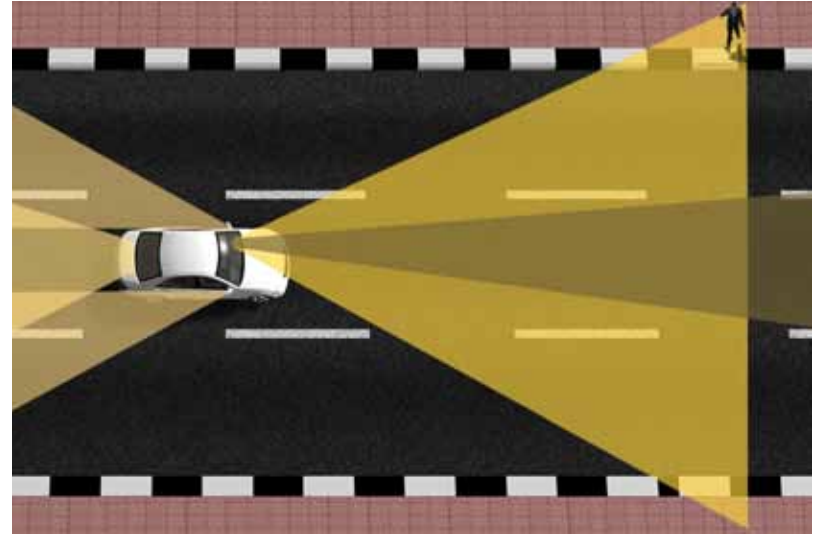
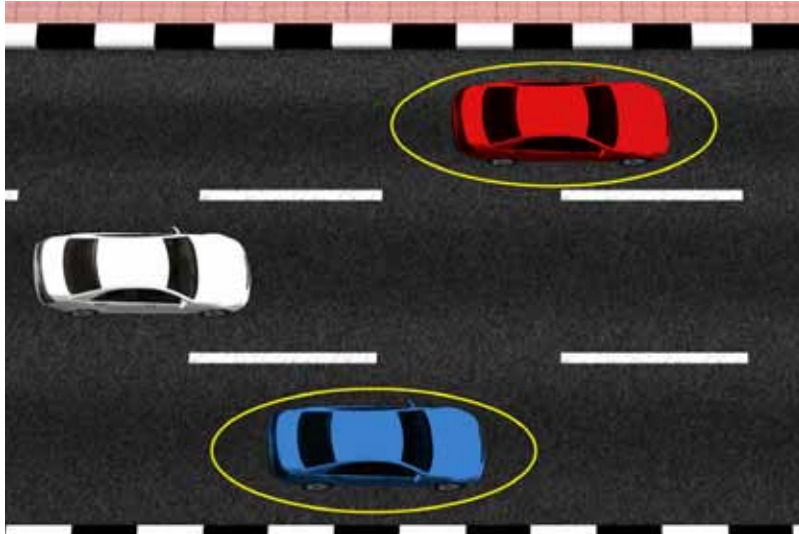
Driving on  
multi-lane roads  
(60-80kmh)

## **Driving Straight: Observation & Scanning**

Look Well Ahead, To Your Sides And To The Rear  
(Awareness Of Tunnel Vision At Higher Speeds)

Be Constantly Aware Of Your Surroundings:  
Identify Signs, Road Markings, Road Users, Etc, While Driving.

Look Along / Down The Line Of Traffic



Driving straight: observation & scanning

## **Driving Straight: Speed Adaptation & Safety Margins**

Know The Speed Limit On Your Road

Maintain Appropriate Speed For The Conditions (Traffic Density, Weather, Light / Dark, Driver Ability) And Speed Limit

Maintain Appropriate Safety Margins When Driving Straight (Minimum 2 Second Rule, Safety Cushions To The Front, Rear And Sides), Slowing Down, Stopping And Moving Off.

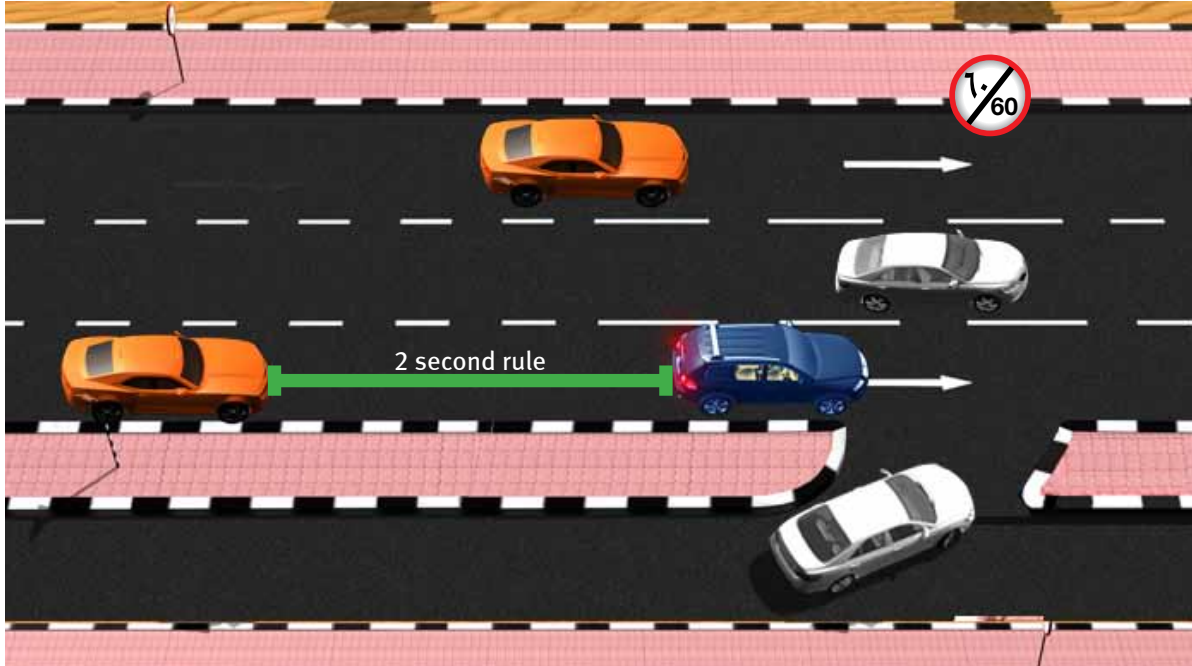
Recognise Braking / Brake Lights / Signals Of Vehicles In Front.

Know When You Are In Someone Else's Blind Spot.

Awareness Of Different Handling Characteristics (e.g. Steering Sensitivity)

Of Vehicle At Higher Speeds (Positioning Within Lane)

Cope With Merging Traffic From The Right (Via Slip Lanes, Service Roads, Bus Stops) And Other Road Users Changing Lane From The Left.



Driving straight: speed adaptation & safety margins

Driving on  
multi-lane roads  
(60-80kmh)

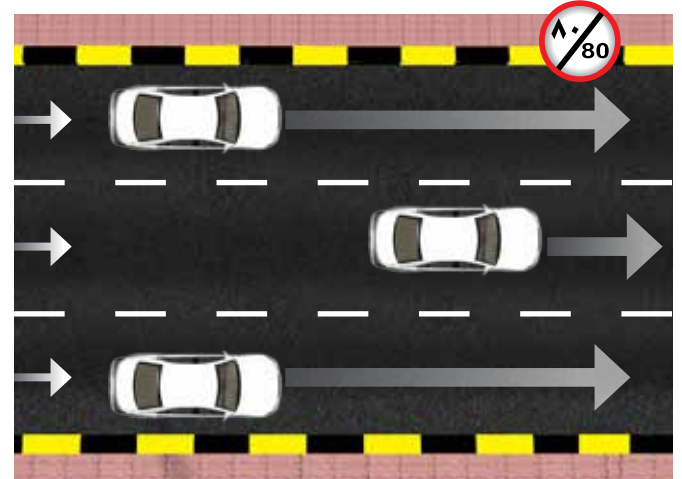
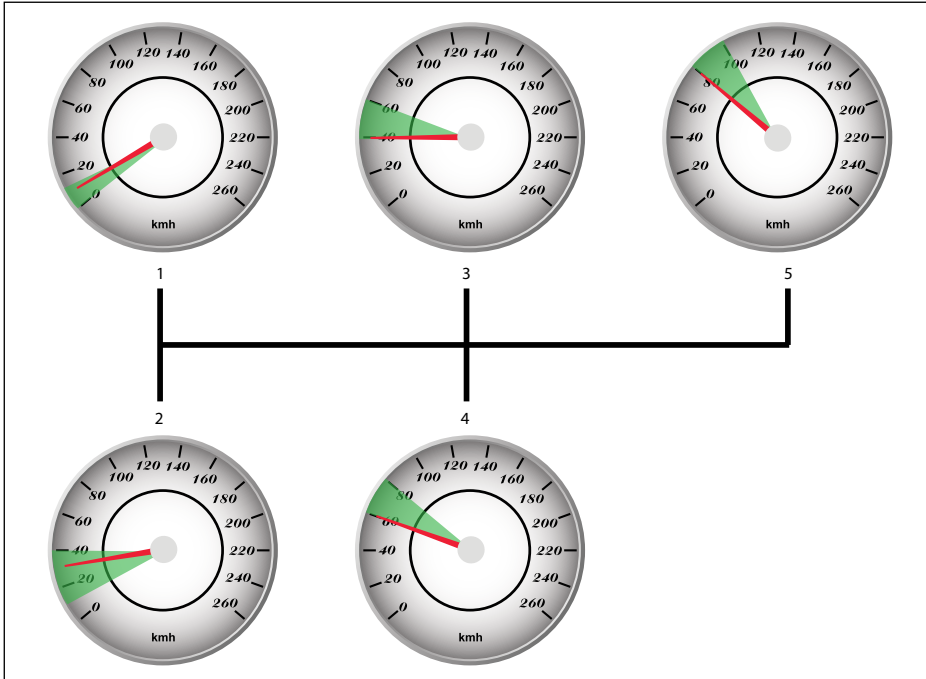
## **Driving Straight: Use Of Higher Gears (Manual Cars)**

Change Into Higher Gears At Appropriate Speed And Movement

No Sequential Downshifting (Through The Gears, e.g. 4-3-2) Required When Slowing Down / Coming To A Stop.

Block - Shifting When Slowing Down, If Required By Vehicle  
(To Prevent Stalling)

Block - Shifting After Slowing Down And When Moving Off Again  
(Appropriate Gear According To Speed)



Driving straight: use of higher gears (manual cars)

Driving on  
multi-lane roads  
(60-80kmh)

## **Exiting Via A Slip Lane (To The Right)**

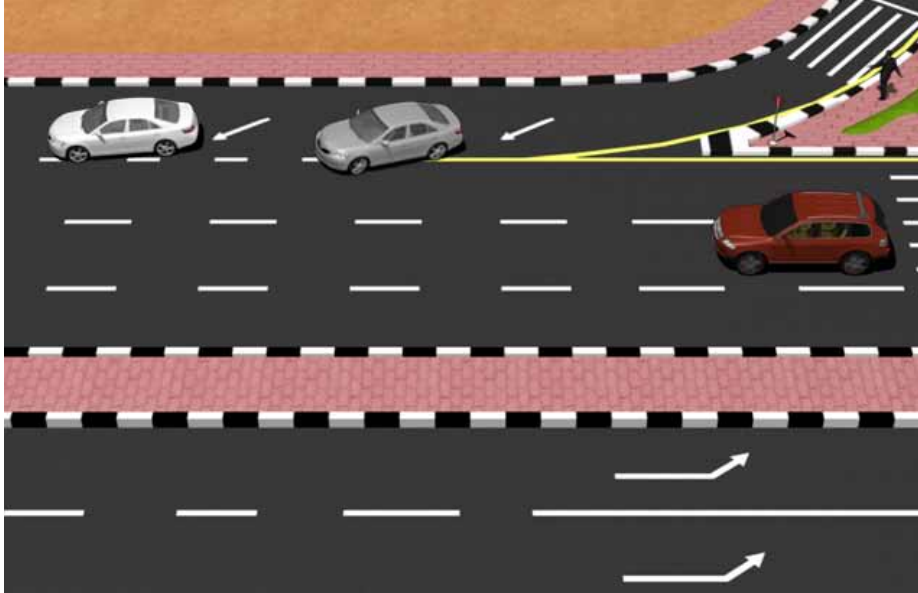
**Approach Phase: MSM PSL**

**(Mirror - Signal - Manoeuvre, Positioning - Speed - Look Into Turn)**

**Turning Phase: Speed - Positioning - Vulnerable Road Users**

**(Pedestrian Crossings) - Look Into Road Ahead (Either 'Through Moving Lane'  
Or Merging Lane)**

**Risk Factor: Beware Of Exiting Traffic Behind You.**



Exiting via a slip lane (to the right)

## Entering Via Slip Lanes (Merging)

Pedestrian Crossings (On Bend, Prior To Merging Lane)

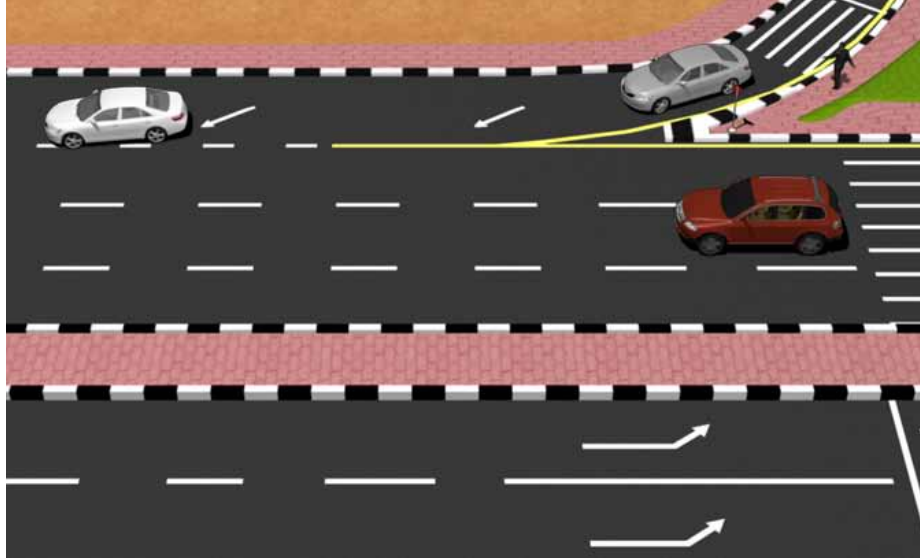
Understand Priority Rule (Give Way)

Approach Phase (On Slip Lane):

Mirrors - Signal - Headcheck - Adjust Speed And Positioning

Merging Phase: Gap Selection

(Merge [Adjust Speed?] Or Waiting Position) – Awareness Of Vehicles Pulling Out From Behind You



Entering via slip lanes (merging)

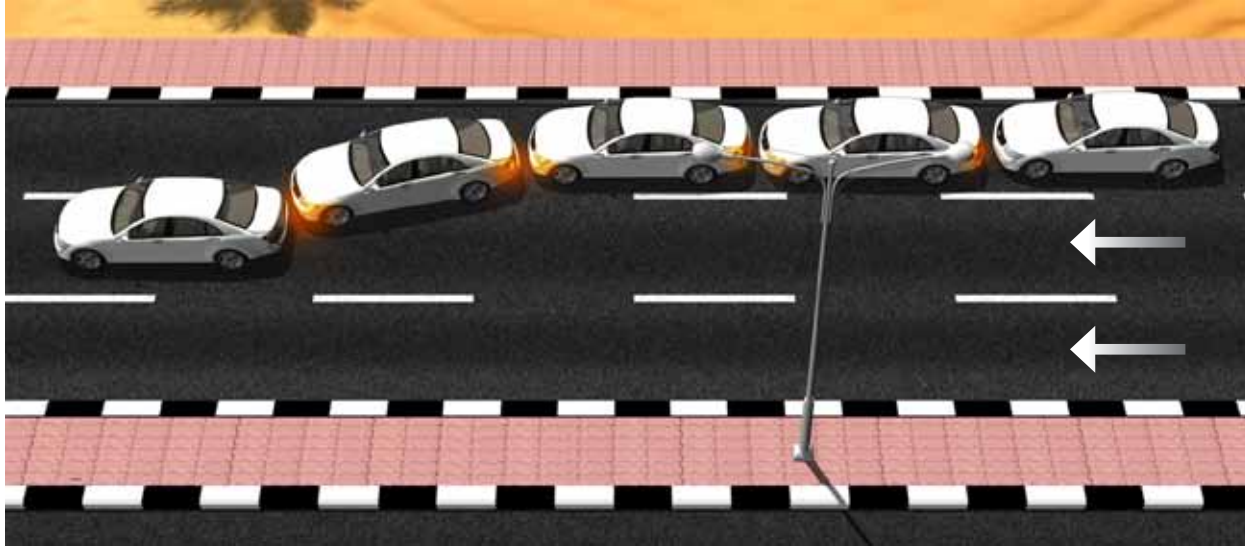
## Lane - Changing

Lane - Changing Phase: Mirrors - Check For Sufficient Gap – Signal – Headcheck – Mirrors – Manoeuvre Into Lane (Positioning / Speed)

Stabilisation Phase: Mirrors, Adjust Speed And Safety Margins After Lane Change

Know Where Lane - Changes Are Not Allowed  
(e.g Before Junctions, Pedestrian Crossing)

Know Where Lane - Changes Are Unsafe (e.g Lane - Changing Into Right - Hand Lane In Advance Of Emerging Traffic Points Such As Service Roads, Bus Stops And Entry Lanes)



Lane - changing



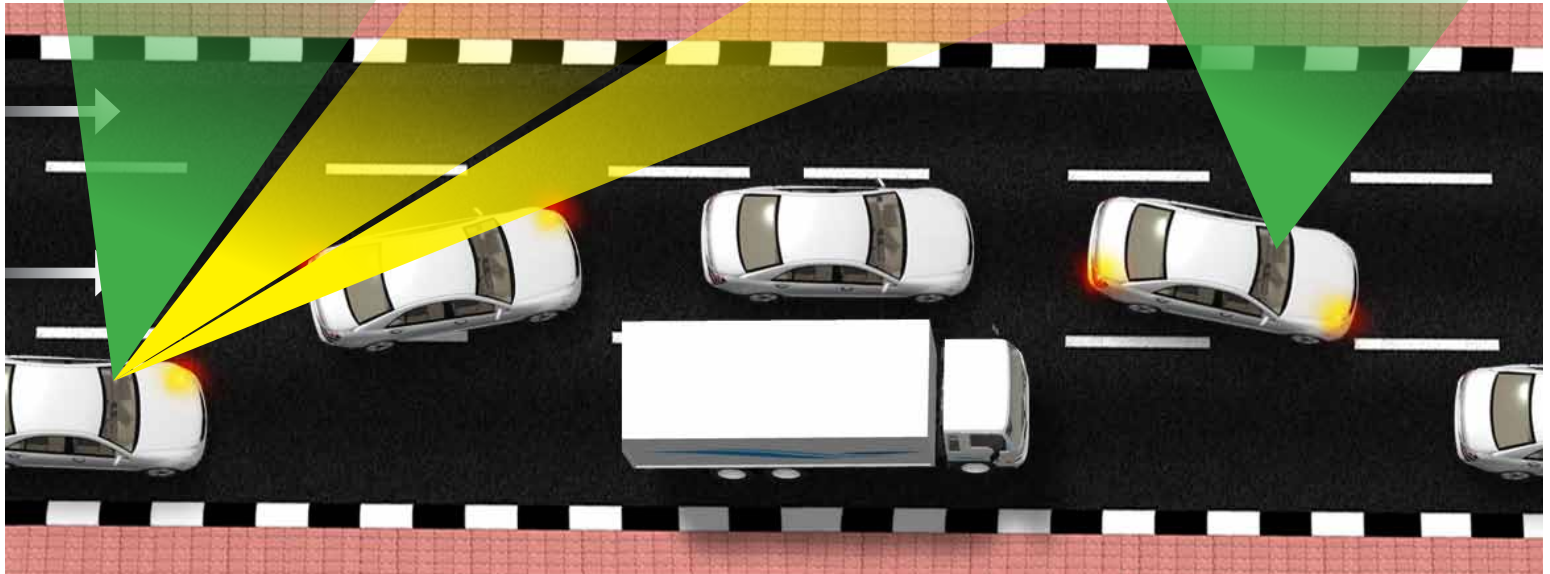
## **Overtaking (Lane Change & Return To Lane)**

Lane - Changing Phase: Mirrors - Check For Sufficient Gap – Signal – Headcheck – Mirrors – Manoeuvre Into Lane (Positioning / Speed)

Stabilisation Phase: Mirrors, Speed And Safety Margins After Lane Change

Return To Lane: Mirrors – Signal – Headcheck – Mirrors – Manoeuvre (Positioning / Speed)

Re-Stabilisation Phase: Mirrors, Adjust Speed And Safety Margins After Lane Change



Passing (lane change & return to lane)

Driving on  
multi-lane roads  
(60-80kmh)

## Turning Left At Traffic Lights

Know The Appropriate Left Filter Lane To Choose, If More Than 1 Lane  
(U - Turn, Left - Turn, Next Turn)

Approach Phase (Entry Into Left Filter Lane And To Traffic Lights):  
Mirrors – Signal – Manoeuvre (Adjust Positioning And Speed)

Turning Phase (Through Lights): Look Into Turn – Enter Turn When Appropriate – Maintain Appropriate Positioning (Lane Selection During And After Turn, Positioning Inrelation To Other Turning Vehicles) And Speed – Beware Of Merging Traffic From The Right

Risk Factor: At Some Traffic Lights, Oncoming Traffic May Also Be On Green!

Risk Factor: The Vehicle In Front May Intend To Make A U-Turn (Rear - End Shunt?)



Turning left at traffic lights

Driving on  
multi-lane roads  
(60-80kmh)

## **U-Turns (At Traffic Lights, Closed)**

Understand U-Turn Signs, Including When Prohibited

Identify U-Turn (And Stop) Sign, Type Of U-Turn (Open, Closed) In Advance

Approach Phase: Mirrors – Signal – Adjust Positioning And Speed

At Stop Sign: Positioning Towards Right Of Lane To Create Space For Turn

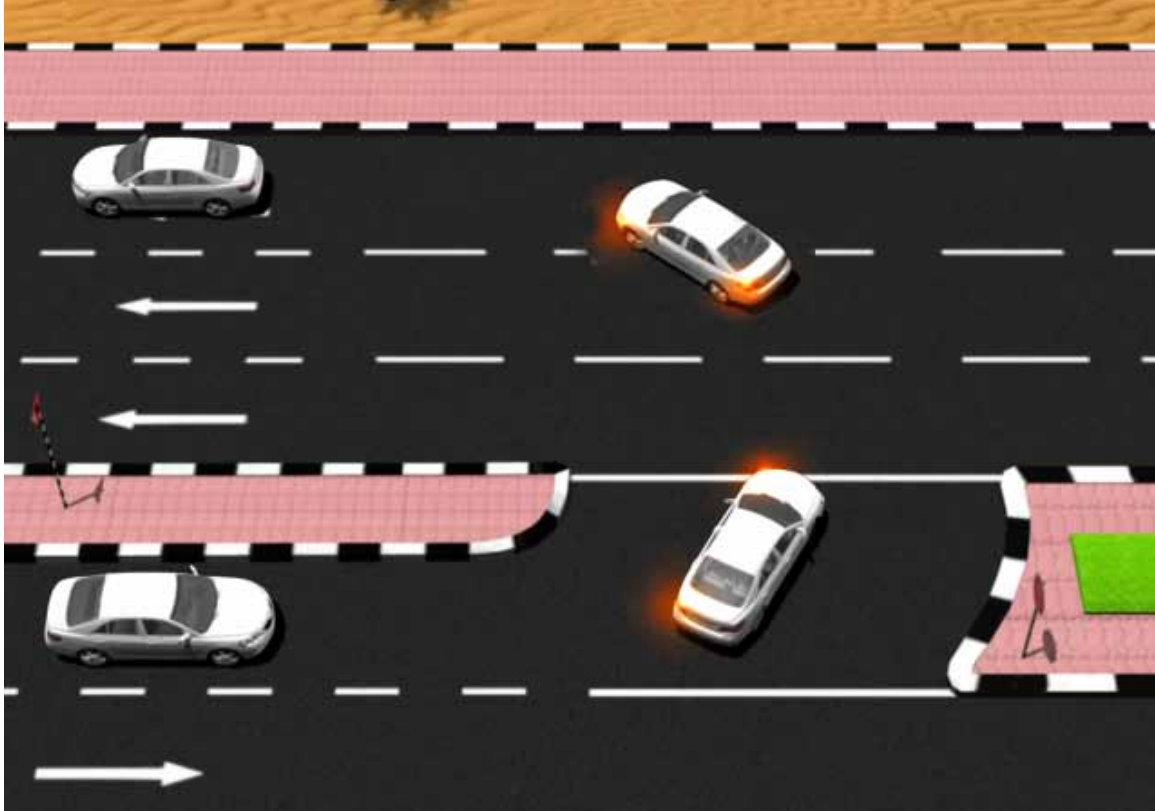
Give Way To Any Oncoming Traffic In All Lanes

(And Opposing Traffic If An Open U-Turn)

At Traffic Lights: Choice Of Left - Most Filter Lane For U-Turns

Turning Phase: Gap Selection – Look Into Turn – Choose Appropriate Lane On Turn –

Beware Of Merging Traffic From The Right (Traffic Lights)



U-turns (at traffic lights, closed)

## **U-Turns (At Traffic Lights, Open)**

Understand U-Turn Signs, Including When Prohibited

Identify U-Turn (And Stop) Sign, Type Of U-Turn (Open, Closed) In Advance

Approach Phase: Mirrors – Signal – Adjust Positioning And Speed

At Stop Sign: Positioning Towards Right Of Lane To Create Space For Turn

Give Way To Any Oncoming Traffic In All Lanes

(And Opposing Traffic If An Open U-Turn)

At Traffic Lights: Choice Of Left - Most Filter Lane For U-Turns

Turning Phase: Gap Selection – Look Into Turn – Choose Appropriate Lane On Turn –

Beware Of Merging Traffic From The Right (Traffic Lights)



U-turns (at traffic lights, open)

Driving on  
multi-lane roads  
(60-80kmh)

## **Multi - Lane Roundabouts (Right, Straight, Left And U-Turns)**

Identify (Roundabout) Traffic Signs, Chevrons, Rumble Strips, In Advance Of Roundabout

Approach Phase: Plane Appropriate Lane – Mirrors – Signal – Headcheck – If Lane - Changing – Positioning & Speed – Give Way To Traffic From The Left On The Roundabout

Entry Phase: Gap Selection – Enter Appropriate Lane On The Roundabout

Exit Phase: Signal – Headchecks – Enter Correct Lane On Exiting The Roundabout – Return To Appropriate Lane (If Necessary) When Safe

Risk Factor: Beware Of Traffic Not Giving Way And Entering In Front Of You Or To The Side (When Driving Straight, On Left - Turns And U-Turns). The Vehicle's Left A - Pillar May Obscure View Of Traffic From The Left End Approaching / Entering Roundabout



Multi-lane Roundabouts (right, straight, left)

Driving on  
multi-lane roads  
(60-80kmh)

## **Multi - Lane Roundabouts (Right, Straight, Left And U-Turns)**

Identify (Roundabout) Traffic Signs, Chevrons, Rumble Strips, In Advance Of Roundabout

Approach Phase: Plane Appropriate Lane – Mirrors – Signal – Headcheck – If Lane - Changing – Positioning & Speed – Give Way To Traffic From The Left On The Roundabout

Entry Phase: Gap Selection – Enter Appropriate Lane On The Roundabout

Exit Phase: Signal – Headchecks – Enter Correct Lane On Exiting The Roundabout – Return To Appropriate Lane (If Necessary) When Safe

Risk Factor: Beware Of Traffic Not Giving Way And Entering In Front Of You Or To The Side (When Driving Straight, On Left - Turns And U-Turns). The Vehicle's Left A - Pillar May Obscure View Of Traffic From The Left End Approaching / Entering Roundabout



Multi-lane Roundabouts (U-turns)

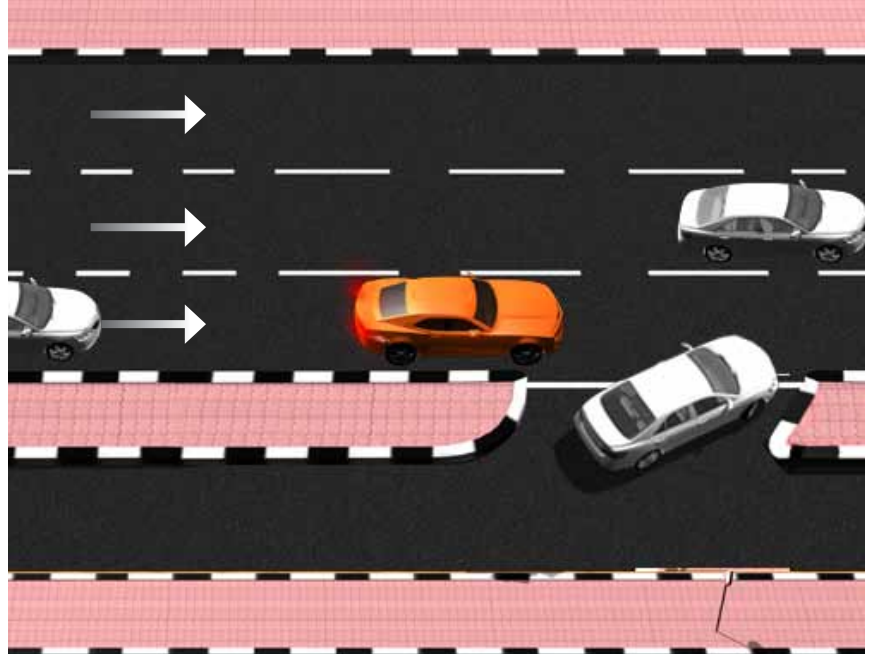
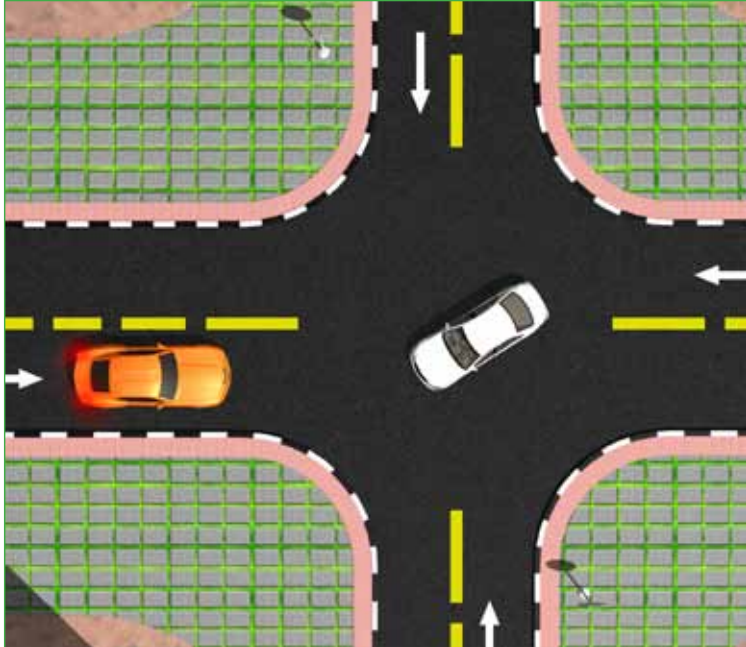
Driving on  
multi-lane roads  
(60-80kmh)

## **Coping With The Unexpected Actions Of Other Road Users**

Examples: Lane - Changing Or Merging Without Prior Warning Or Prior Observation

Know That Other Drivers May Not Drive According To The Rules

Giving Way To The Other Road Users Where Considerate And Safe: Share The Road



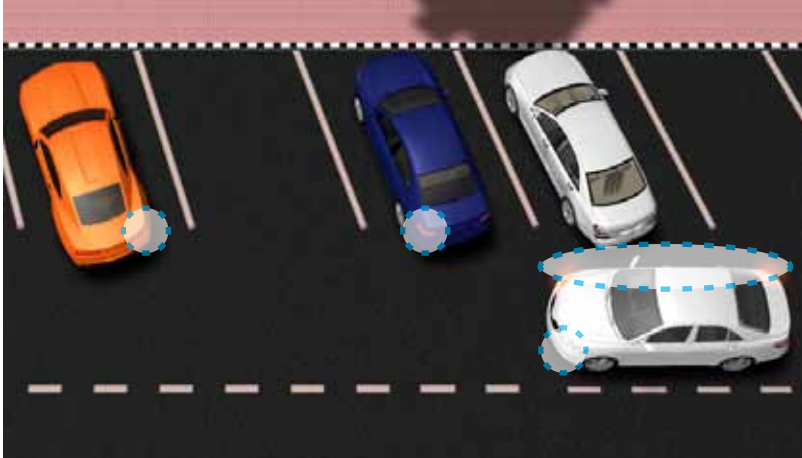
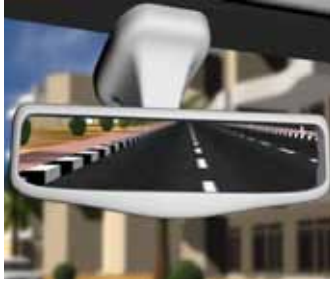
Coping with the unexpected actions of other road users

# Special Manoeuvres

### **Angle Parking (60<sup>0</sup>, Forwards Only, Left & Right)<sup>3</sup>**

Entry Phase: Mirrors – Signal – Speed Adjustment – Headcheck  
(Vulnerable Road Users) – Manoeuvre Into Parking Space When Safe

Exit Phase (Reversing): Observation (Approaching Road Users), Headchecks Right  
And Left, Reversing When Safe (Beware Of Reversing Into Traffic!)



Angle parking ( $60^{\circ}$ , forwards only, left & right)<sup>3</sup>

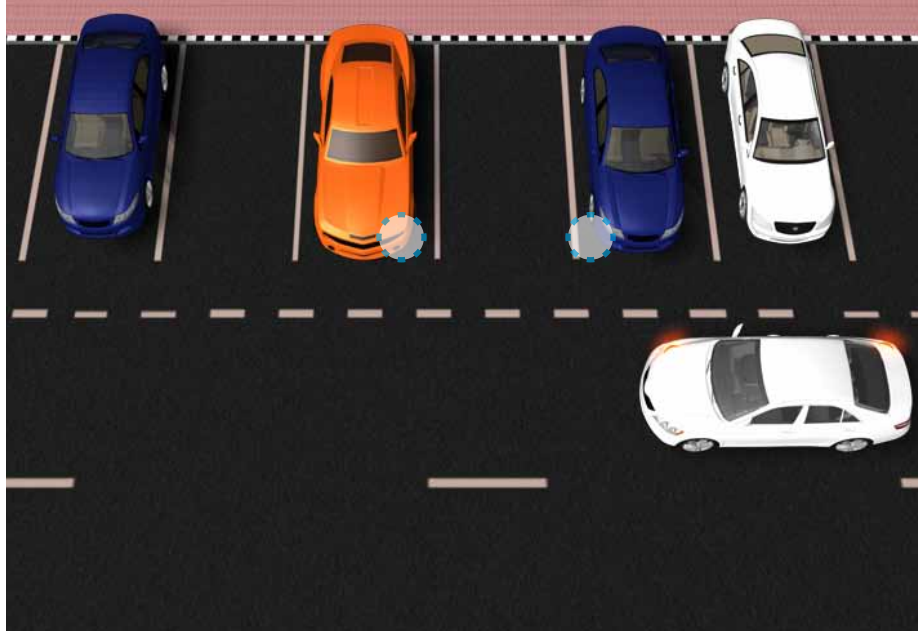
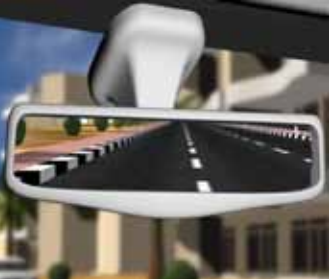
## **Garage Parking (90<sup>0</sup>, Reverse Only, Left & Right)<sup>4</sup>**

Understand Why It Is Safer To Reverse Into A Garage Parking Space

Pre-Entry Phase: Observation / Assessment Of Parking Space On Arrival

Entry Phase (In Reverse Gear): Positioning Of The Vehicle Before  
Reversing – Mirrors – Signal – Manoeuvre Into The Parking Space When Safe

Exit Phase: Observation (Approaching Road Users) – Signal – Manoeuvre Out Of The  
Parking Space When Safe



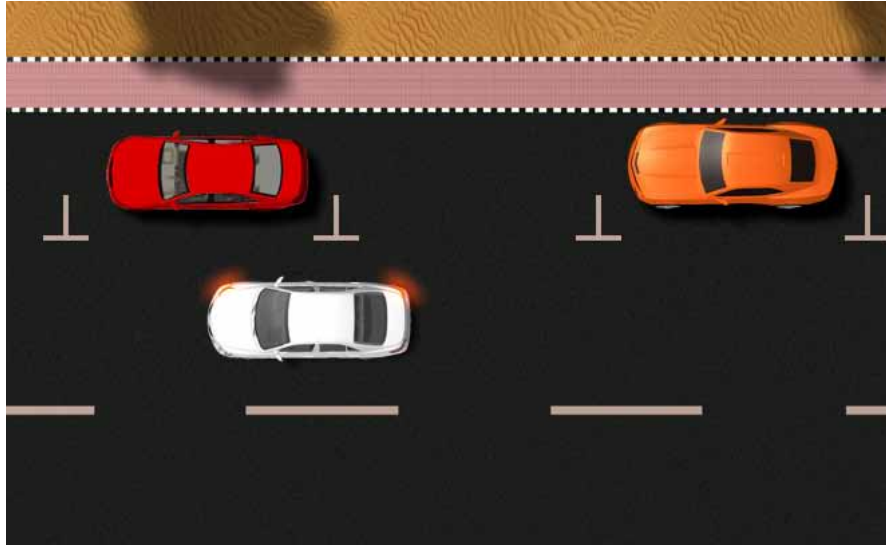
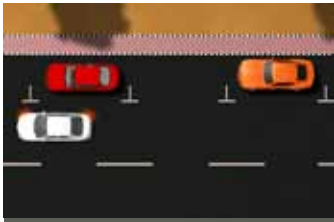
Garage parking (90°, reverse only, left & right)<sup>4</sup>

## **Parallel Parking (Reverse, And To The Right, Only)<sup>5</sup>**

Pre - Entry Phase: Observation / Assessment Of Parking Space On Arrival

Entry Phase: Positioning Of The Vehicle Before  
Reversing – Mirrors – Signal – Headchecks (Both Sides) – Use Orientation Points To  
Reverse Into Space

Exit Phase: Space In Front To Move Off? - Signal – Headcheck – Manoeuvre



Parallel parking (reverse, and to the right, only)<sup>5</sup>

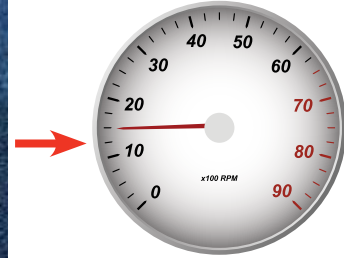
## **Moving Off On An Incline (Forward Only, Manual And Automatic Cars)**

Understand The Importance Of The Handbrake, Correct Gear, Biting Point  
(Manual Cars) And Effective Observation Before Moving

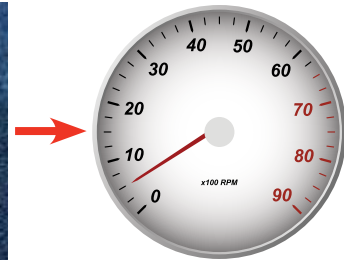
1



2



3



Moving off on an incline (forward only, manual and automatic cars)

# Vehicle Safety Check<sup>6</sup> & Documentation

## Tyres

Know The Legal Minimum Profile For Your Tyres

Know The Correct Pressure Of Your Tyres

Know How To Check Tyre Profile And Pressure, And How Often

Know How To Adjust Tyre Pressure

Know Where Your Spare Tyre Is



Tyres



## Fluid Levels

Know How To Fill The (Windscreen) Washer Fluid Reservoir

Know Where The Motor Oil Reservoir Is

Understand The Importance Of These And Other Fluids (e.g. Engine Coolant, Brake Fluid, Steering And Automatic Transmission Fluid) For The Smooth And Safe Function Of The Vehicle



Fluid levels

## **Servicing / Vehicle Inspection**

**Know The Legal Requirements For Vehicle Inspections  
(Frequency, Certificate, Process)**

**Know When Your Car Should Be Serviced**

**Know That Servicing Does Not Just Involve An Oil Change  
(Brakes Are Especially Important)**



Servicing / vehicle inspection



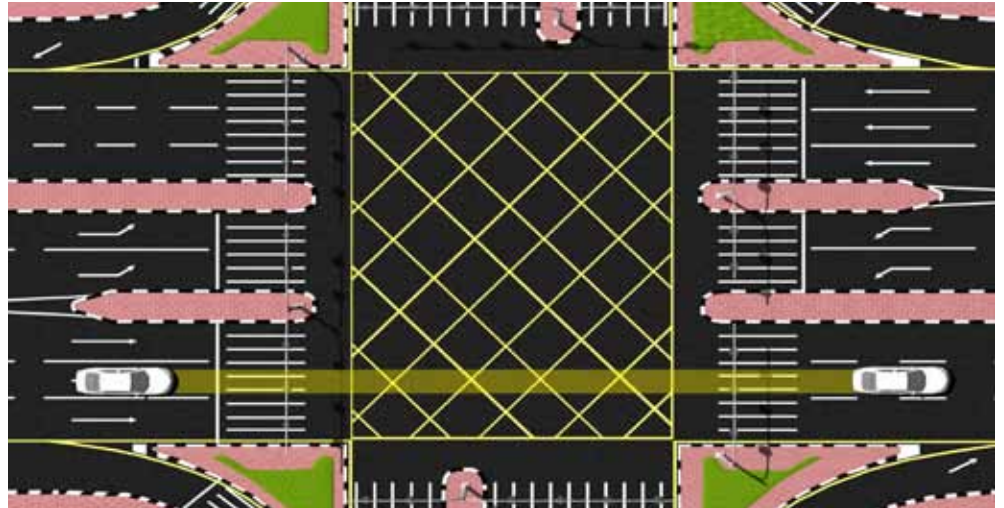
## Legal Documents Required (Vehicle / Driver)

Vehicle Registration Card (Vehicle Inspection, Vehicle Insurance)

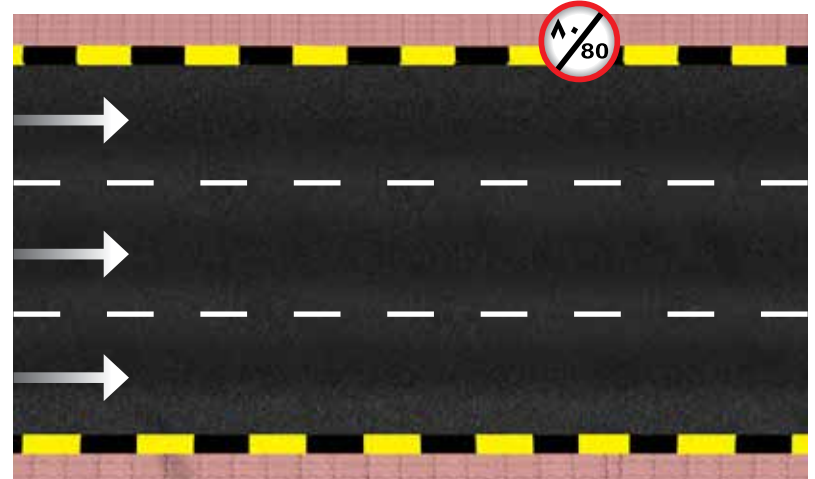
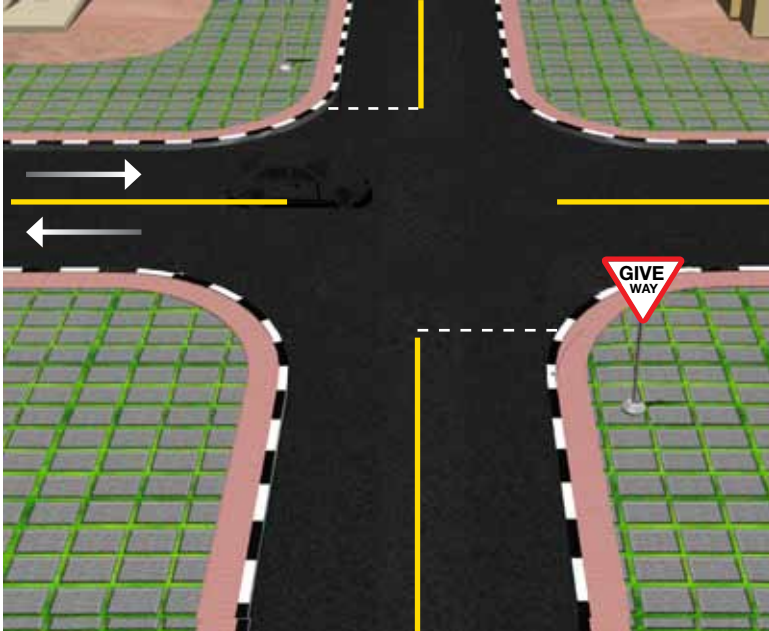
Salik, Valid Driving License For The Category Of Vehicle Being Driven



# Mix of Road Types



Independent decision - making  
when driving (instructor only  
gives directions)



The Beginning of a freeway



The End of a freeway



Independent decision - making when driving (instructor only gives directions)

مركز الأبحاث  
RTA

### PRACTICAL ROAD TEST SCORE SHEET

نموذج الفحص العملي لفحص الطريق

رقم الترخيص المروري: 005274

Vehicle category: LMV

Driving Instructor's No.:

Applicant Name:

Learning Permit No.:

Time of Test:

**IMMEDIATE FAILS (Only one of the below)**

Description	Codes	رموز
1. Failure to stop at RED SIGNAL, STOP SIGN or STOP LINE.	IF 1	IF 1
2. Colliding with any mobile or immovable object, or making an action causing collision or triggering intervention of the examiner or causing any other motorist to swerve to avoid collision.	IF 2	IF 2
3. Not Adhering to Traffic Sign/ignoring No Entry Sign or Yellow Box Junction or examiner's directions	IF 3	IF 3
4. Lack of vehicle Control to the extent that proceeding with the test is deemed hazardous.	IF 4	IF 4
5. Failure to ensure the road, lane or roundabout is clear before entering/proceeding.	IF 5	IF 5

**Minor Faults**

Performance Criteria	No. of Checks	Observations	ملاحظات	Codes
1. Pre-Drive Checks				PD
2. Mirrors & Observation				M
3. Signals				S
4. Lane Change				L
5. Overtaking				O
6. Approach				A
7. Position Stop				PS
8. Judgement				J
9. Left Turns (R/A & U-turn)				LT

**Error Codes**

1. Pre-Drive Checks  
 PD 1. Not ensuring the doors are closed.  
 PD 2. Not using the rear seat belt.  
 PD 3. Not ensuring that the vehicle is in a suitable condition to be driven.

Internal Assessment test