

SUSTAINABLE LAWRENCE

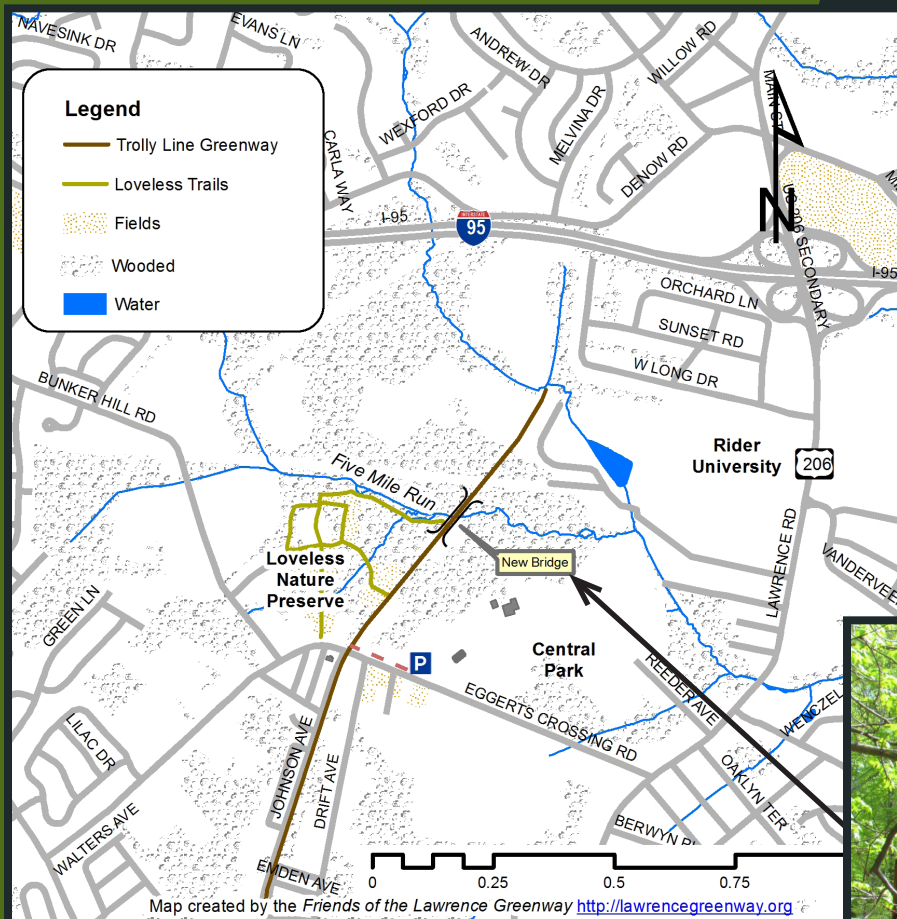
SATURDAY, JUNE 11, 2011

LET'S MOVE LAWRENCE!

LOVELESS PRESERVE AND OLD JOHNSON TROLLEY TRACKS

1ST ANNUAL RALPH COPLEMAN NEIGHBORHOOD BIKE RIDE - GREENWAY WALK

FOR MORE INFORMATION SEE: WWW.SUSTAINABLELAWRENCE.ORG OR CALL (609) 731 1818
PARKING AVAILABLE AT LOTS IN THE COMMUNITY CENTER, CENTRAL PARK AND THE ARMORY.



COME JOIN US TO DEDICATE THE NEW TROLLEY BRIDGE

9:00 LAWRENCE GREENWAYS
ANNUAL HIKE - LOVELESS PRESERVE

10:00 TROLLEY BRIDGE
DEDICATION - FIVE MILE RUN CREEK

10:30 BIKE/WALK BEGINS ALONG
TOWNSHIP TRAILS.



Sponsored By:

Historical Society, Greenway, Sustainable Lawrence, Green Team, Sustainable Mobility, Open Space, Senior Citizens, Lawrence Nature Center, Lawrence Conservation Foundation, Lawrence Community Center, Eggerts Crossing Civic League, Lawrence Hopewell Trails Group, NJ Future, Ewing Trails Team, West Windsor Bike/Pedestrian Alliance, Knapp Cyclery.