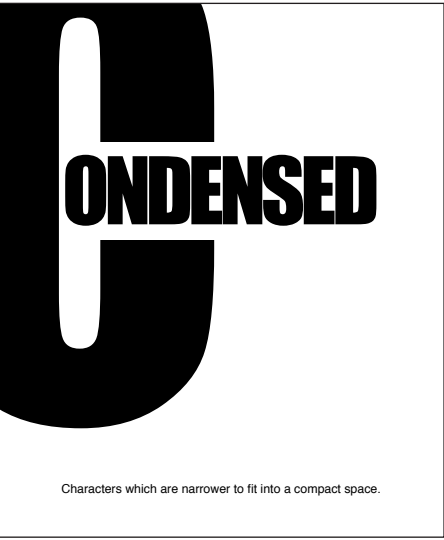
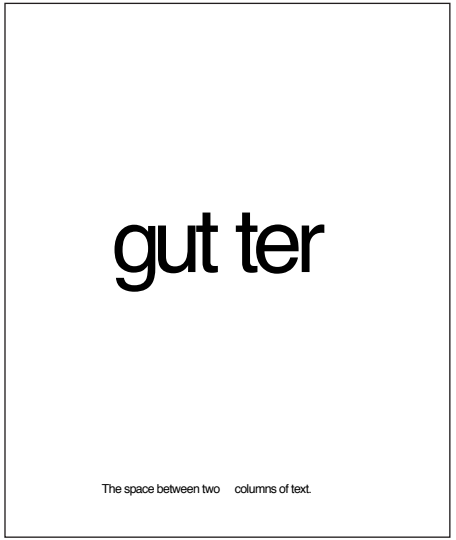


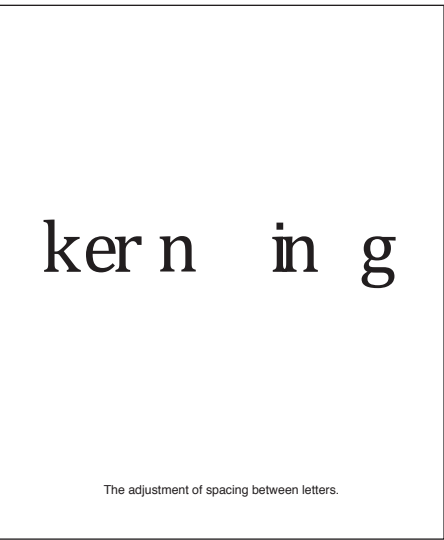
The enclosed oval or round curve of letters like 'D', 'g', 'b', and 'o'.



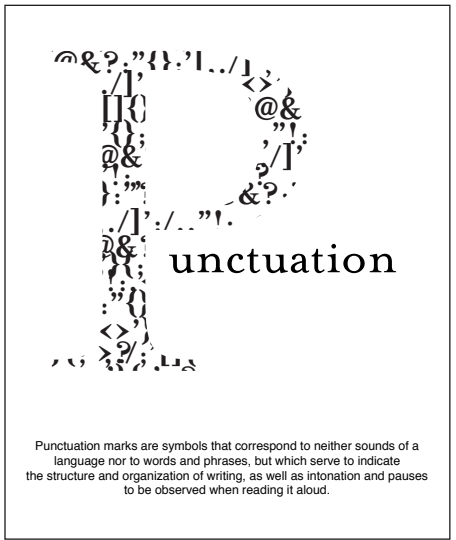
Characters which are narrower to fit into a compact space.



The space between two columns of text.



The adjustment of spacing between letters.



Punctuation marks are symbols that correspond to neither sounds of a language nor to words and phrases, but which serve to indicate the structure and organization of writing, as well as intonation and pauses to be observed when reading it aloud.