

The Cool Color

The re-growth of this stunning blonde was done with 1 oz (30 ml) 100 SA and 2 oz (60 ml) 20 Volume Developer. The mid-shaft and ends were equalized with i.color and 10 Volume Developer, using foils to separate darker areas (adding more control to even result). Check constantly as hair lifts to desired level.

Once color was lifted to desired level, it was washed off with Senscience Silk Moisture.

The hair was then toned "roots to ends" with 10V and 10 Volume developer which was left on for approximately 15 minutes. The hair was then shampooed once more with Senscience Silk Moisture Shampoo

and conditioned with Senscience Silk Moisture Conditioner.

Once the hair was towel dried a Senscience True Hue bead was applied for increased color protection and shine. Senscience Volume Boost was added to the hair and then it was blow dried ready for setting.

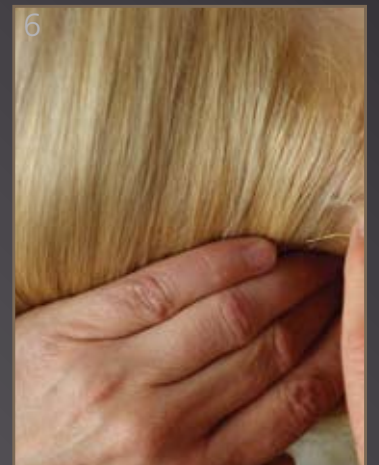
Note: it is important to get your back combing firm at the root, while allowing your ends to remain softer.



Once Back combing is completed, begin to pull by pulling your chosen side (right or left) back from the front, to the center of the nape.



Using your fingers to hold the hair firmly in place; take a bobbie pin with your other hand and slide up from the nape collecting all the hair into it to secure shape.



Tuck the rest of the hair in to your twist to fill out the shape.



With hair pins (not bobbie pins) place them in to the fatter side of the twist, pull them over to the thinner side to create a 'spring like' tension and secure by sliding into your twist.



The bottom of your shape can be lifted tight with your hair pins, or left loose according to the finish you wish to have. Spray hair with Senscience Silk Finish to hold style in place.

