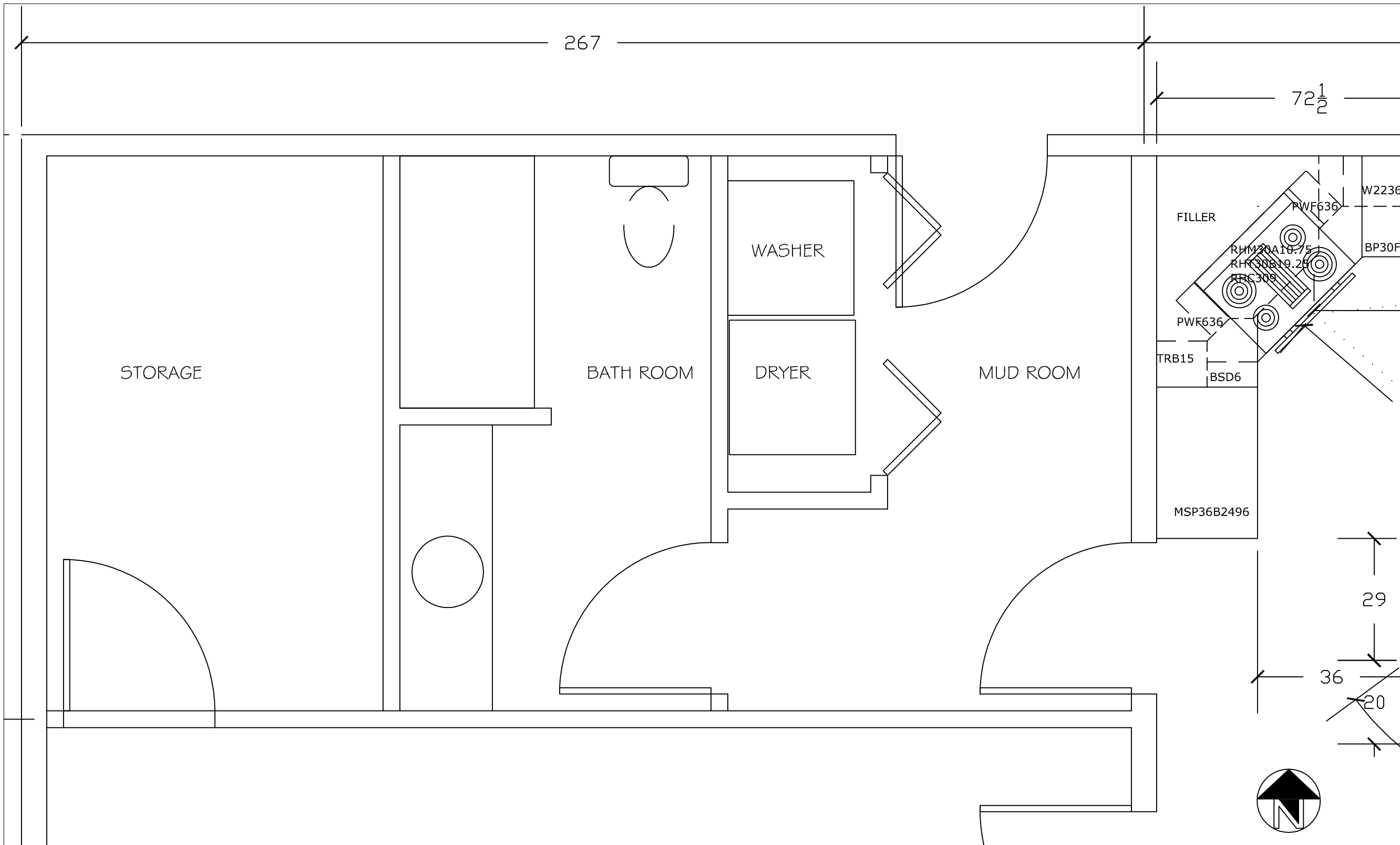




DUNHILL FAMILY PROJECT

BY
AMANDA MANUEL



PRODUCED BY AN AUTODESK EDUCATIONAL PRODUCT

PRODUCED BY AN AUTODESK EDUCATIONAL PRODUCT

KITCHEN AND
BATH DESIGN
AT AIO
CARRIE CZAR



Creative Design

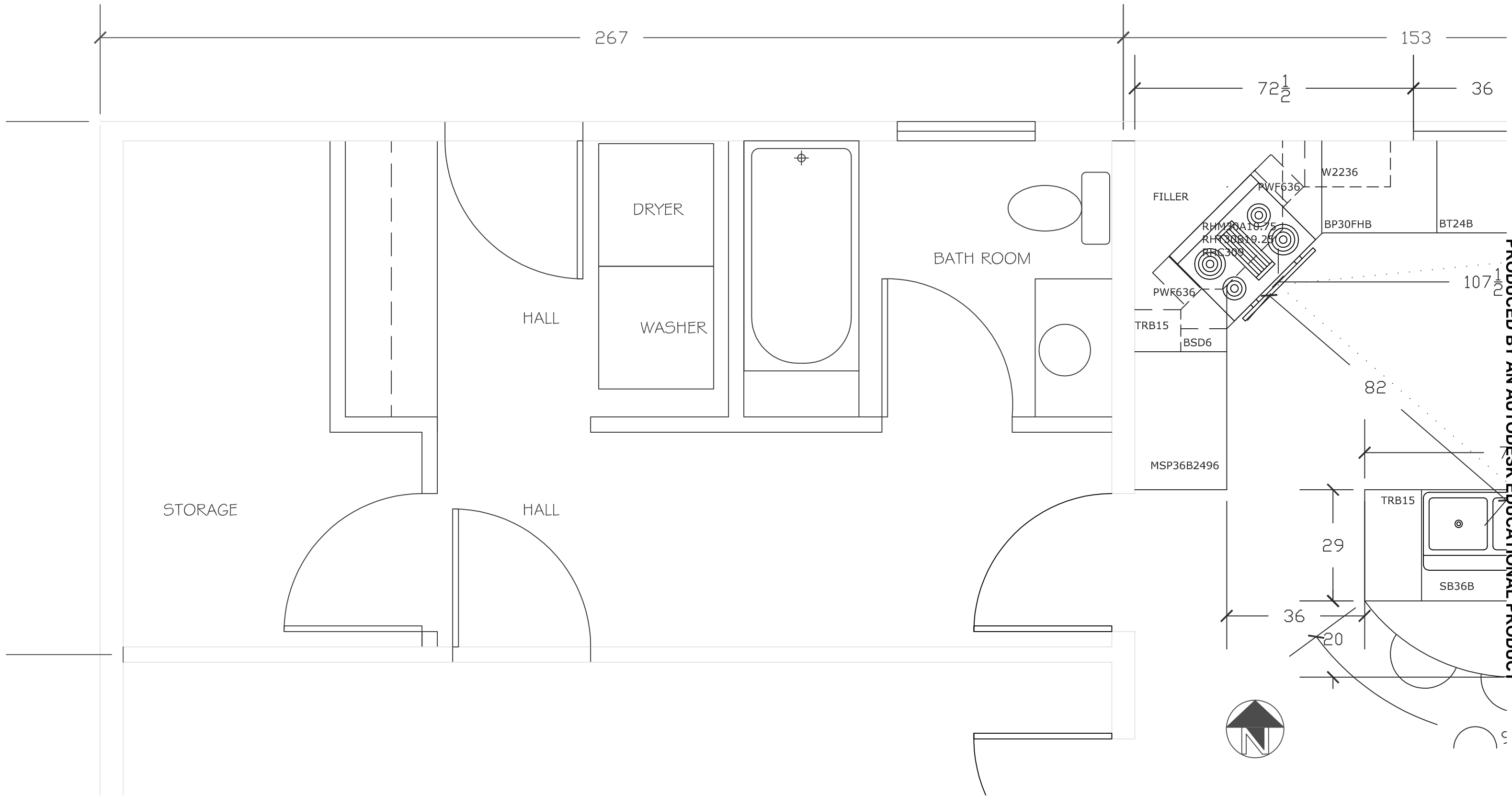
DUNILL BATH
DESIGN 1
SCALE 1/2" = 1'-0"

DRAWN BY
AMANDA MANUEL
DATE:
11-20-2007

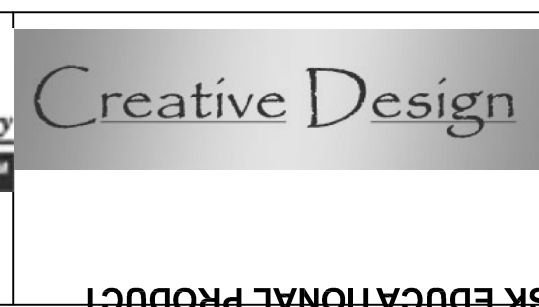
REVISIONS:

PRODUCED BY AN AUTODESK EDUCATIONAL PRODUCT

PRODUCED BY AN AUTODESK EDUCATIONAL PRODUCT



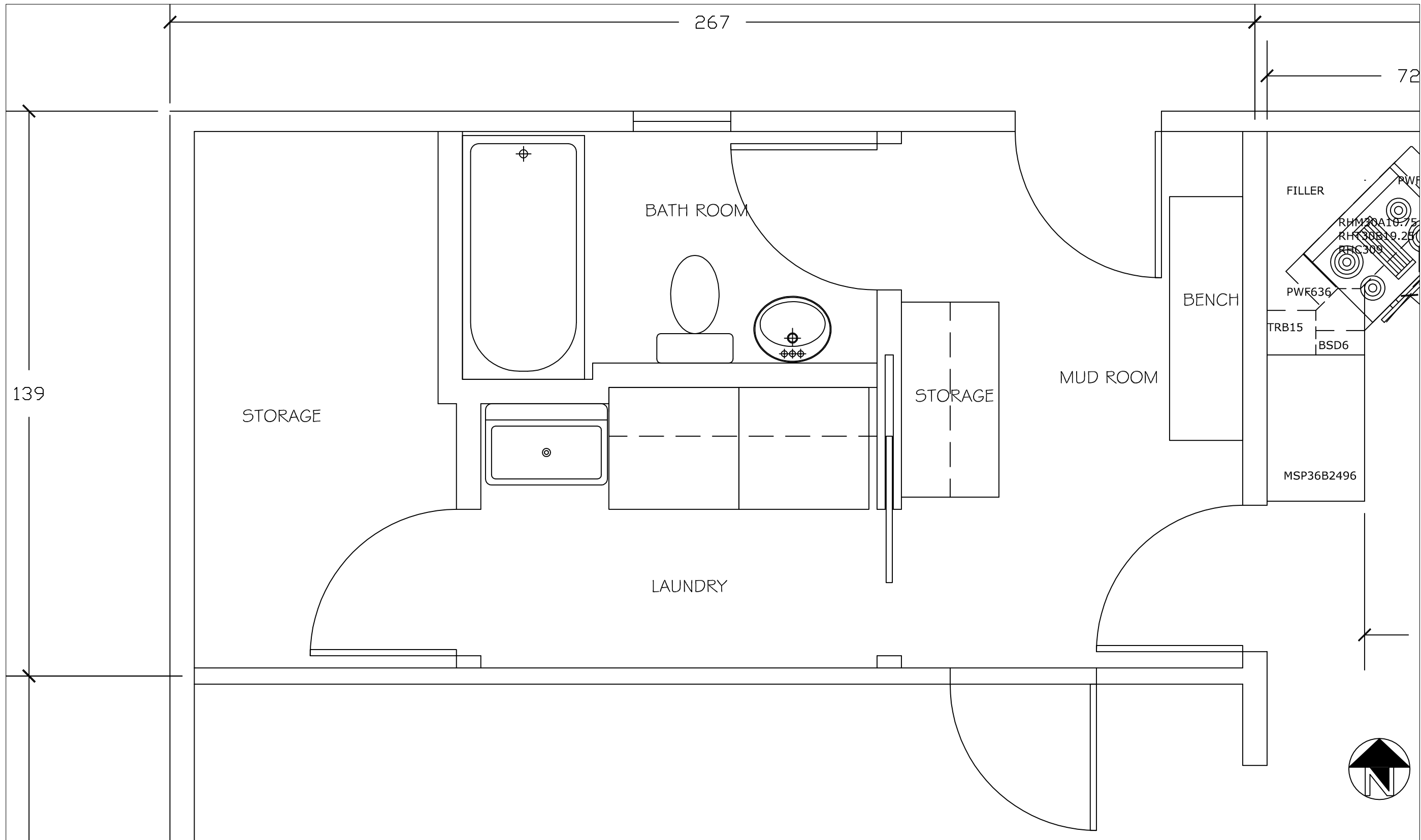
KITCHEN AND
BATH DESIGN
AT AIO
CARRIE CZAR



DUNILL BATH
DESIGN 2
SCALE 1/2" = 1'-0"

DRAWN BY
AMANDA MANUEL
DATE:
11-24-2007

REVISIONS:



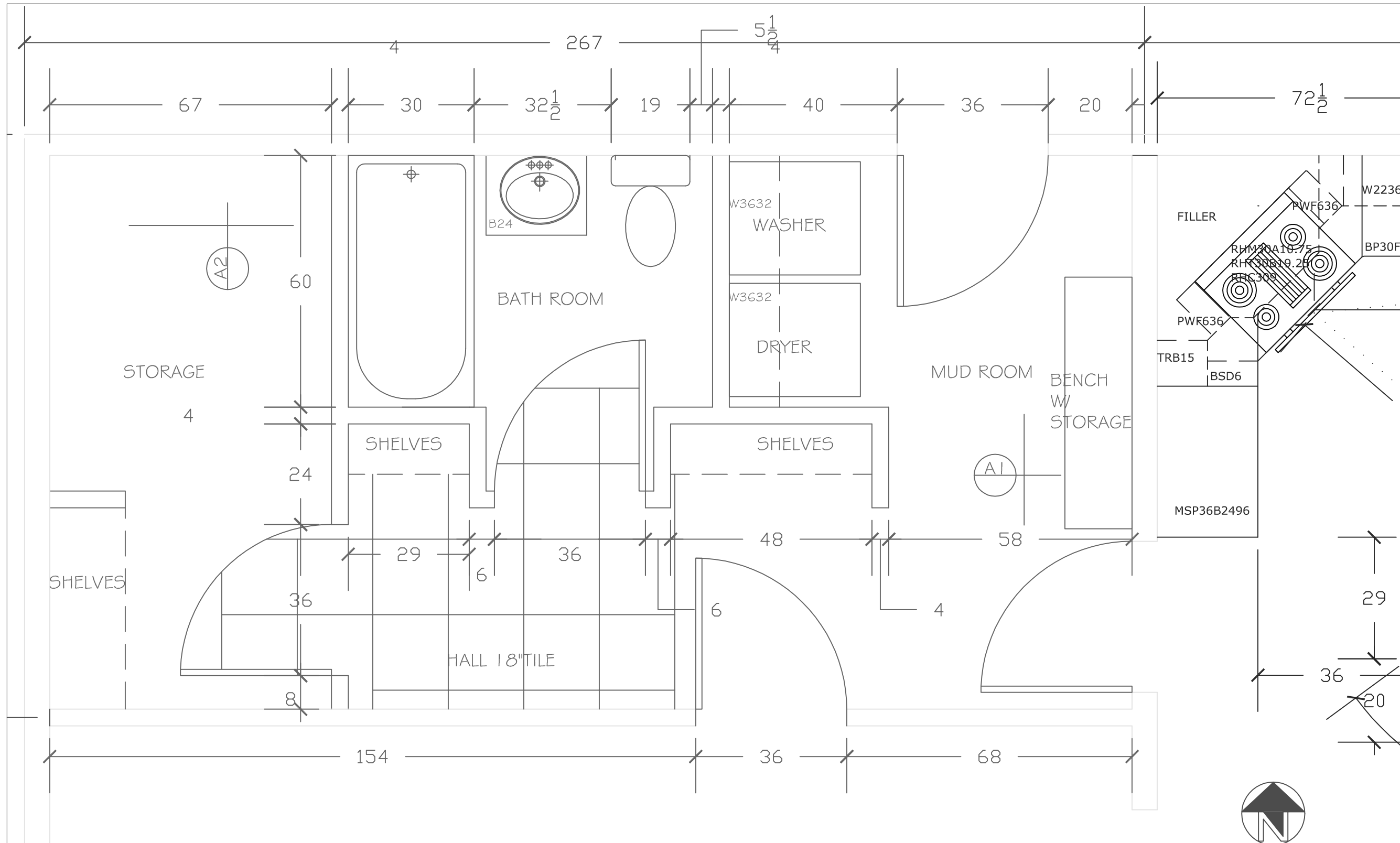
KITCHEN AND
BATH DESIGN
AT AIO
CARRIE CZAR



DUNILL BATH
DESIGN 3
SCALE 1/2" = 1'-0"

DRAWN BY
AMANDA MANUEL
DATE:
11-24-2007

REVISIONS:



PRODUCED BY AN AUTODESK EDUCATIONAL PRODUCT

PRODUCED BY AN AUTODESK EDUCATIONAL PRODUCT

KITCHEN AND BATH DESIGN AT AIO CARRIE CZAR



Creative Design

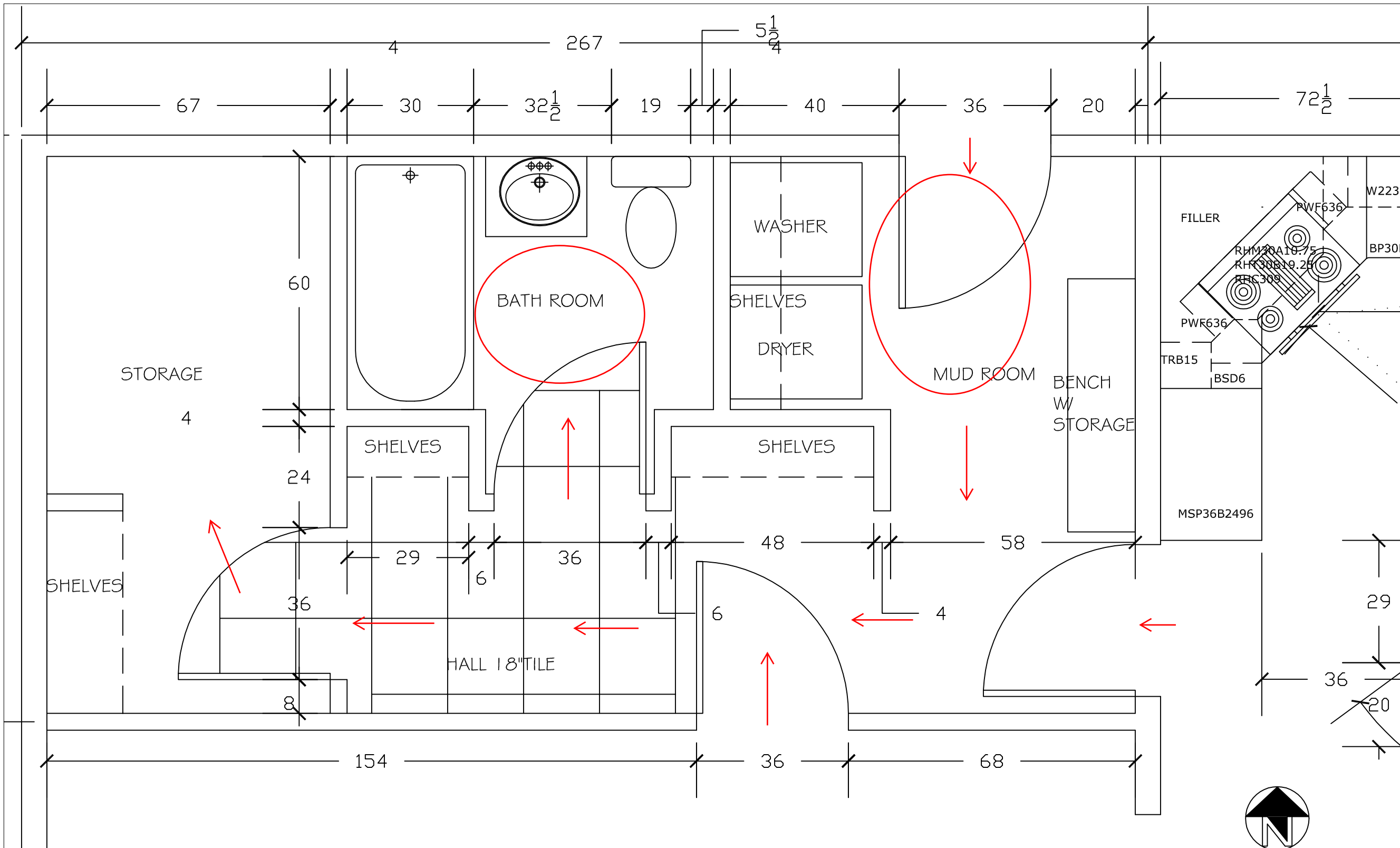
DUNILL BATH DESIGN 1 SCALE 1/2" = 1'-0"

DRAWN BY AMANDA MANUEL DATE: 11-26-2007

REVISIONS:

PRODUCED BY AN AUTODESK EDUCATIONAL PRODUCT

PRODUCED BY AN AUTODESK EDUCATIONAL PRODUCT



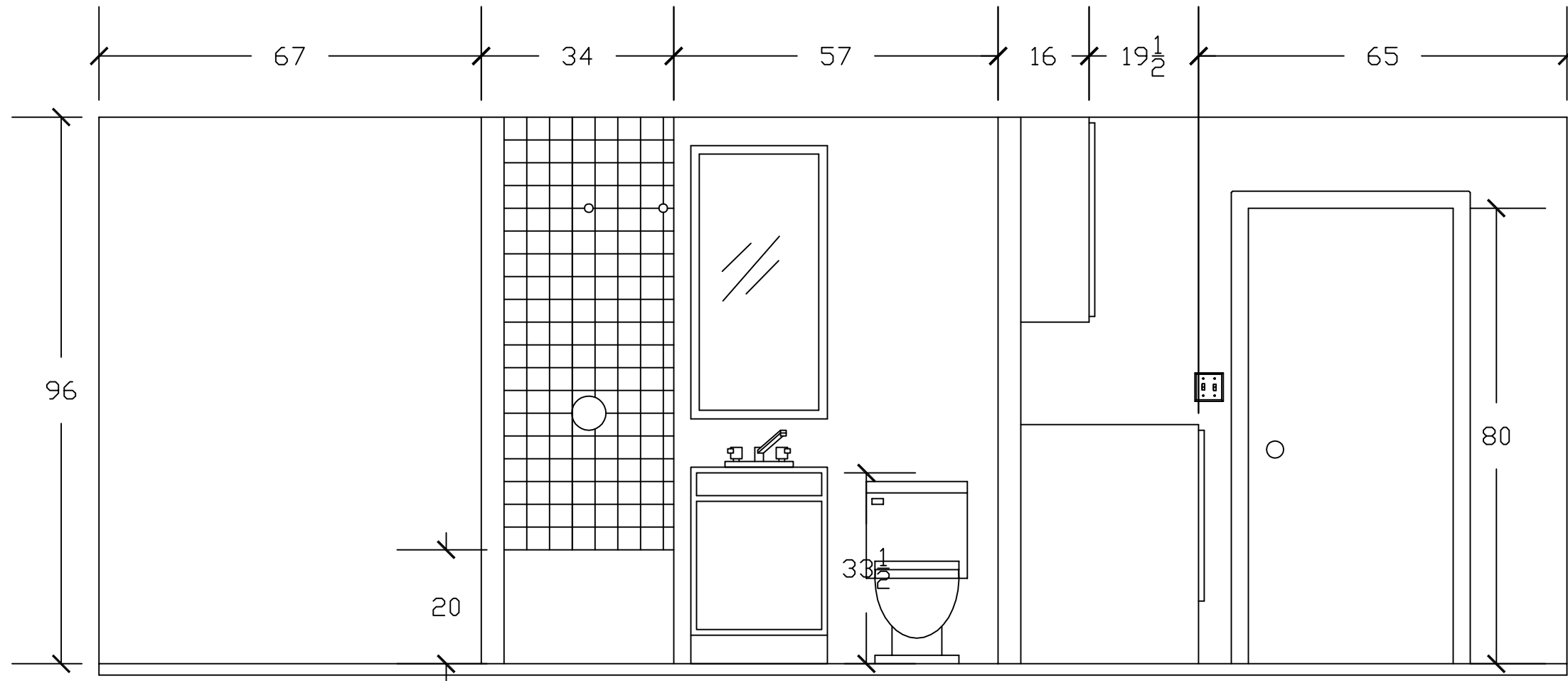
KITCHEN AND BATH DESIGN AT AIO CARRIE CZAR



DUNILL BATH DESIGN 1 SCALE 1/2" = 1'-0"

DRAWN BY AMANDA MANUEL DATE: 11-26-2007

REVISIONS:



PRODUCED BY AN AUTODESK EDUCATIONAL PRODUCT

PRODUCED BY AN AUTODESK EDUCATIONAL PRODUCT

A2 NORTH WALL ELEVATION

KITCHEN AND BATH DESIGN AT AIO CARRIE CZAR

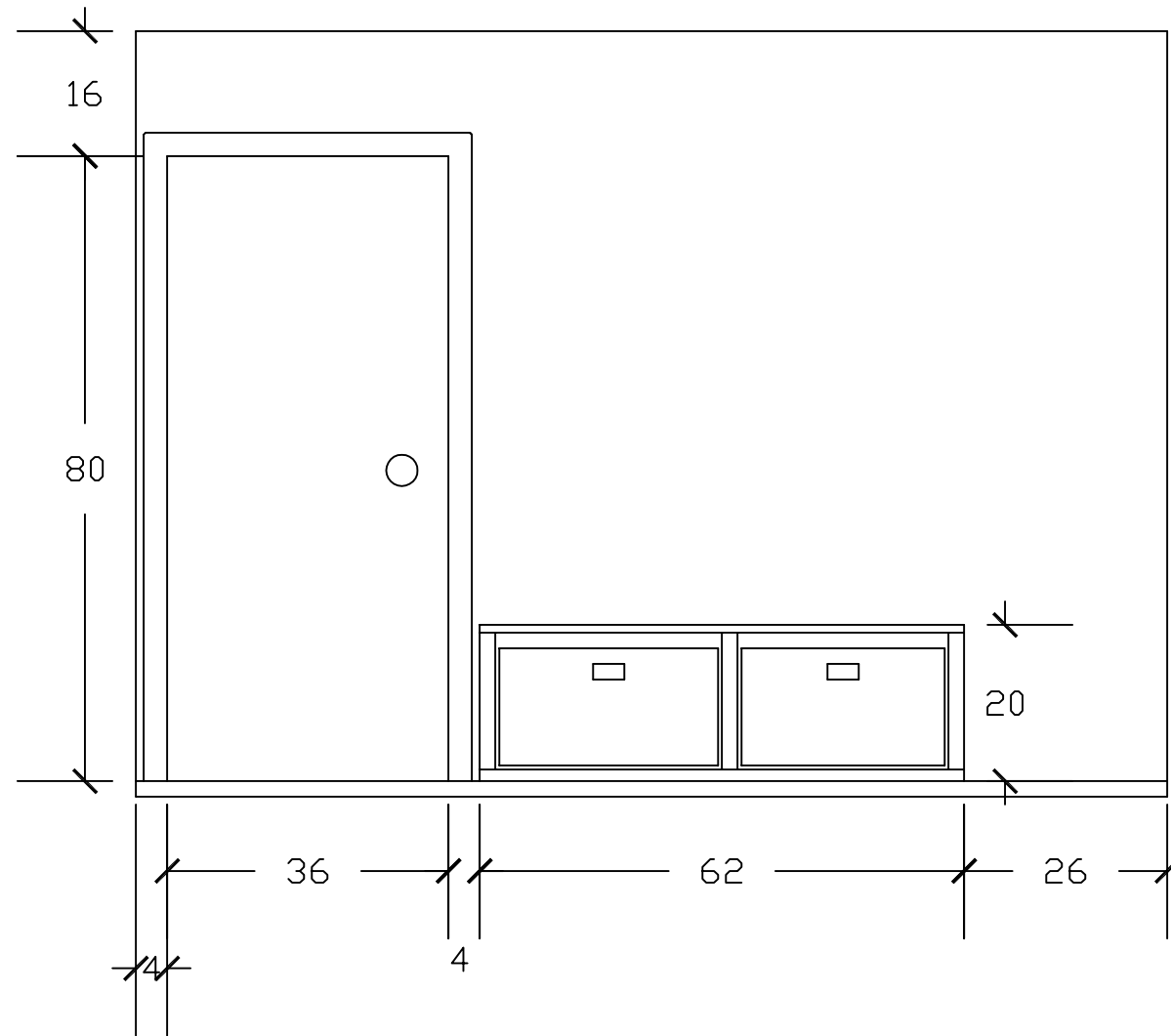


Creative Design

DUNILL BATH DESIGN 1 ELEVATIONS SCALE 1/2"=1'-0"

DRAWN BY AMANDA MANUEL DATE: 11-26-2007

REVISIONS:



A1 EAST WALL ELEVATION-MUD ROOM

PRODUCED BY AN AUTODESK EDUCATIONAL PRODUCT

PRODUCED BY AN AUTODESK EDUCATIONAL PRODUCT

KITCHEN AND
BATH DESIGN
AT AIO
CARRIE CZAR



DUNILL BATH
DESIGN 1
ELEVATIONS
SCALE 1/2"=1'-0"

DRAWN BY
AMANDA MANUEL
DATE:
11-26-2007

REVISIONS:

STYLES TO APPLY

CONTEMPORARY-



The first design would incorporate warm color cabinetry with straight edged appliances and cabinetry. Molding would be flat and a contrasting white to the other neutral colors of the space. A splash of color would be added in art and accessories with a possible colorful wall to tie the space together.

Home Portfolio (2007) Retrieved on November 9, 2007 from <http://www.homeportfolio.com/GetInspired/RoomsToLove/7.17.00/index.jhtml>

CONTEMPORARY/TRADITIONAL-



The second style would also have straight edges with no frills. The cabinets would be an oak or dark oak color with neutral to bold colors on the walls and accessories. Cabinets would have a traditional raised panel with no curved lines.

Home Portfolio (2007) Retrieved on November 9, 2007 from <http://www.homeportfolio.com/GetInspired/RoomsToLove/7.17.00/index.jhtml>

CONTEMPORARY/MODERN-



The third design would incorporate a lot of industrial material with white and black contrasting colors through out. Bold color accessories would add vibrancy and more flare to the space.

FINAL DESIGN

The contemporary/traditional style of the adjacent kitchen would be the best choice to continue into the additional mud room and bath area. This will create one cohesive theme and enhance the overall beauty of the home while reflecting the Dunhill's personal sense of style.



Kohler Fairfax Single Handle Lavatory Faucet; Retrieved on November 26, 2007 from <http://www.lowes.com/lowes/lkn?action=productDetail&productId=179248-20602-12182-BN&lpage=none>



Kohler Memoirs Lavatory Basin; Retrieved on November 26, 2007 from <http://www.lowes.com/lowes/lkn?action=productDetail&productId=223964-20602-K-2345-8-0&lpage=none>



Zenith Oval Mirror Medicine Cabinet; Retrieved November 26, 2007 from <http://www.lowes.com/lowes/lkn?action=productDetail&productId=184292-336-MMV1132&lpage=none>



American Standard Skyline Champion Tank with America's BEST Flushing System; Retrieved on November 26, 2007 from <http://www.lowes.com/lowes/lkn?action=productDetail&productId=226927-834-4077016.020&lpage=none>



American Standard 60" White Right Hand Princeton Americast Bathtub Retrieved November 26, 2007 from <http://www.lowes.com/lowes/lkn?action=productDetail&productId=82355-834-2391202.02&lpage=none>



24" Oak Base Cabinet: Retrieved on November 26, 2007 from <http://www.lowes.com/lowes/lkn?action=productDetail&productId=138644-1541-22A%20B24R&lpage=none>