

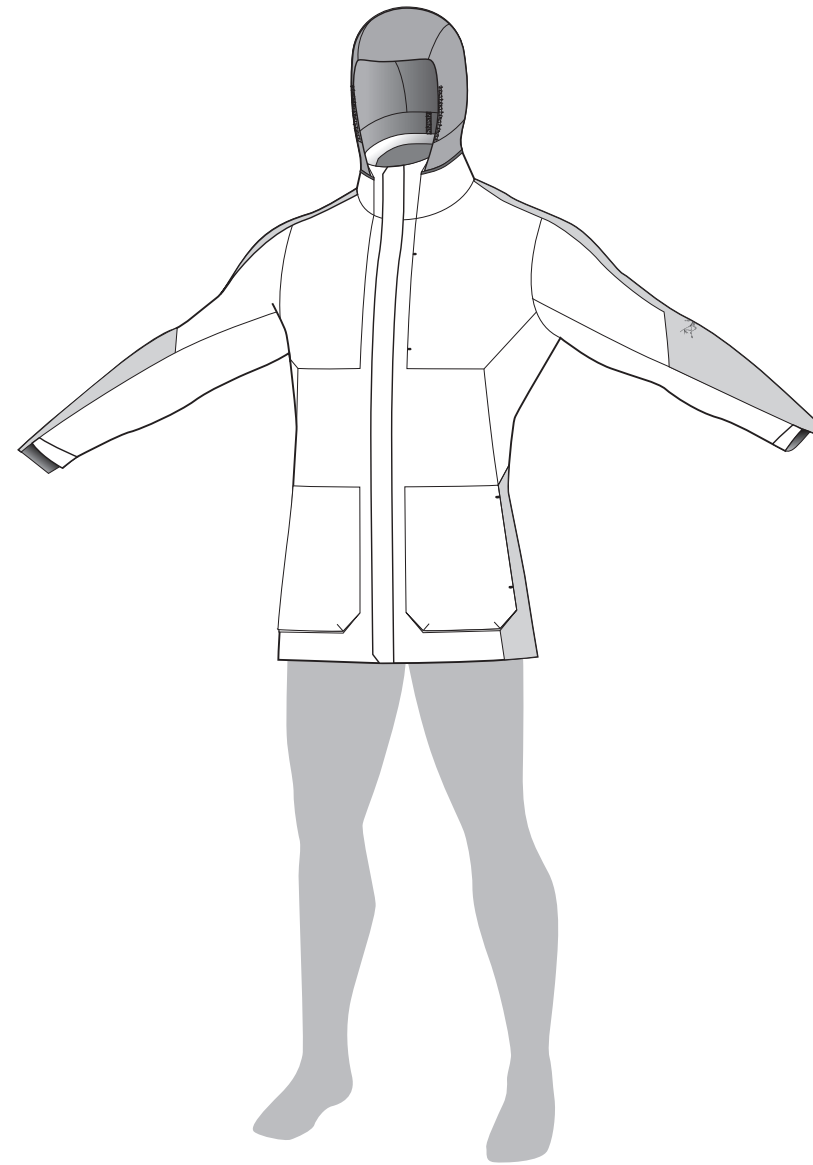
1ST LAYER // Cuesta Henley

When you want all-day comfort in a top that can be worn as an active baselayer, over a tee or button-down for office wear, or on its own for easy style, look no further than the Cuesta Henley.



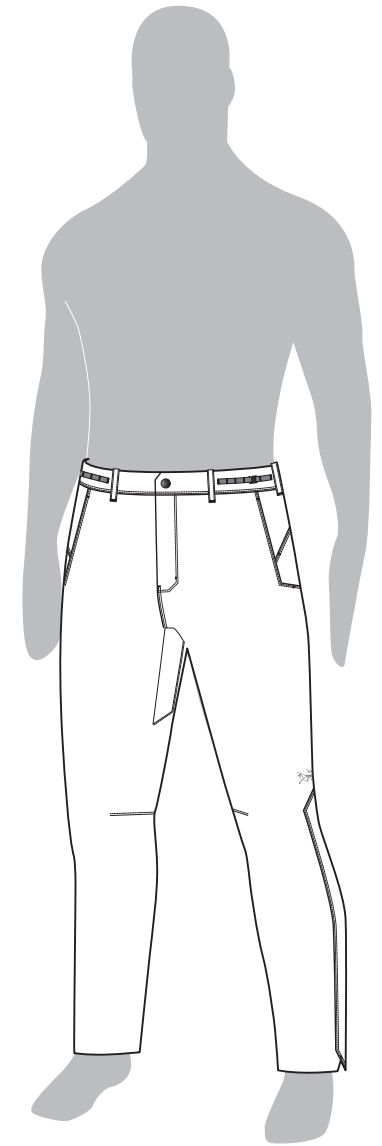
2ND LAYER // Taiga Jacket

Crafting the ultimate midlayer jacket meant fusing the all-day comfort of a cardigan with the functional performance of an insulated jacket, all in a package that looks good for any activity.



3RD LAYER // Alluvial Jacket

Taking the performance requirements for a technical shell jacket and merging them with an all-day aesthetic, the Alluvial Jacket brings innovative performance to a functional silhouette.



BOTTOMS // Riverine Trouser

Designed for the rigors of any given day, the Riverine Trouser combines the classic hand of cotton with the performance of Cordura nylon and a touch of stretch for a pant that looks as great in the office as it does on the trail.

MEN'S LAYERING SYSTEM



ARC'TERYX

24 // Sp'19