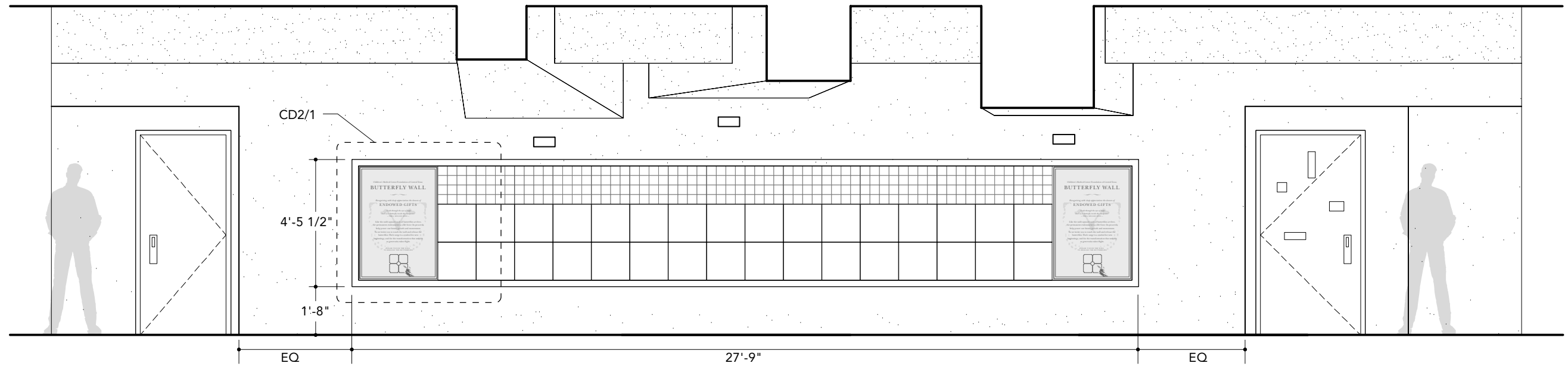


**1 Plan**  
scale: 1/4"=1'-0"



**2 Elevation**  
scale: 1/4"=1'-0"

48, 16" x 16" tiles  
768 individual squares



fd2s inc.  
500 Chicon  
Austin, Texas 78702  
tel 512.476.7733  
fax 512.473.2202  
www.fd2s.com

©2006 fd2s inc.  
All rights reserved  
This document is the product and exclusive  
property of fd2s inc. Neither the document nor  
the information it contains may be copied, dis-  
closed to others or used in connection with any  
work or project other than the specific project for  
which they have been prepared and developed  
without the written consent of fd2s inc.

**Project Name**  
Children's Medical  
Center Foundation of  
Central Texas

**Issues/Revisions**  
01.09.06 Schematic Design  
01.04.07 CD-Butterfly Donor Wall

**Fabrication Documentation**  
The details shown are suggested fabrication methods  
to achieve an overall visual aesthetic. Fabricators may  
offer alternative fabrication techniques which achieve  
the same visual intent. No visual changes will be  
acceptable.

**Date**  
28 July 2006  
**Project Code**  
05CMCF002  
**Scale**  
Various

**Page Title / Element Type**  
Donor Wall Plan and Elevation

**Construction Document**  
**CD1**