

PO#	DATE	PO #	DATE
	10.20.04	3818	12.8.04
			REVISION
			1.11.05
			REVISION
			4.20.05
			REVISION

**THE BATTISTA RESIDENCE**

A CUSTOM DESIGN FOR

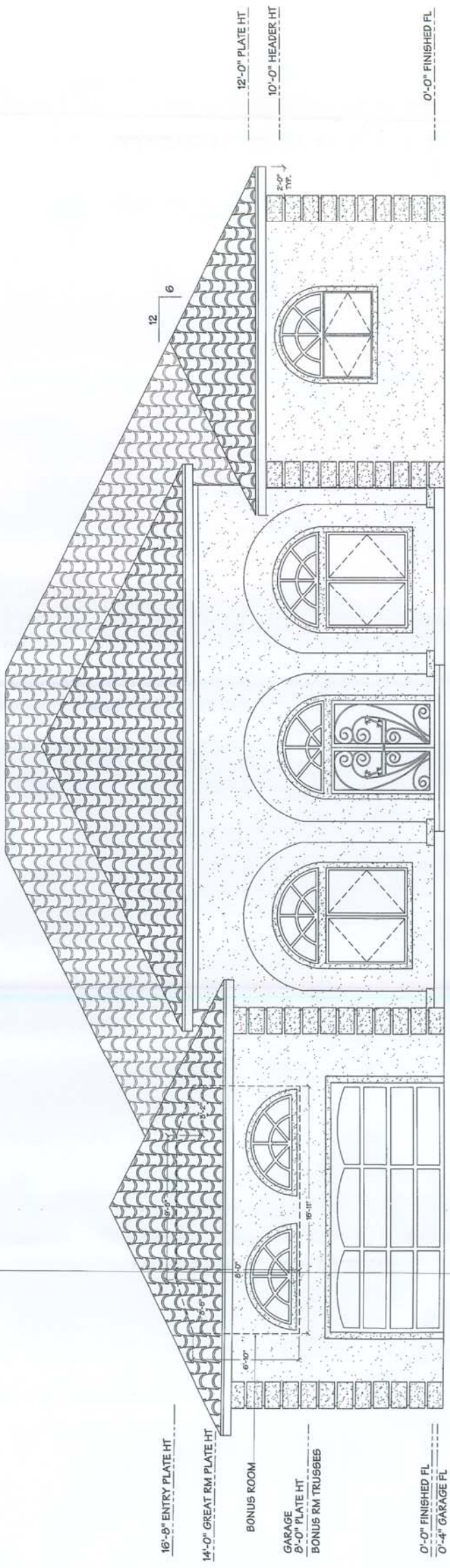
**TECH-ART**  
 DESIGN & ENGINEERING, INC.  
 8530 U.S. HIGHWAY 1, SUITE 8  
 MIAMI, FL 32976  
 (772) 663-6991

**ARTHUR F. PRIEP, P.E.**  
 8530 U.S. HIGHWAY 1, SUITE 8  
 MIAMI, FL 32976  
 PROFESSIONAL ENGINEER #24683

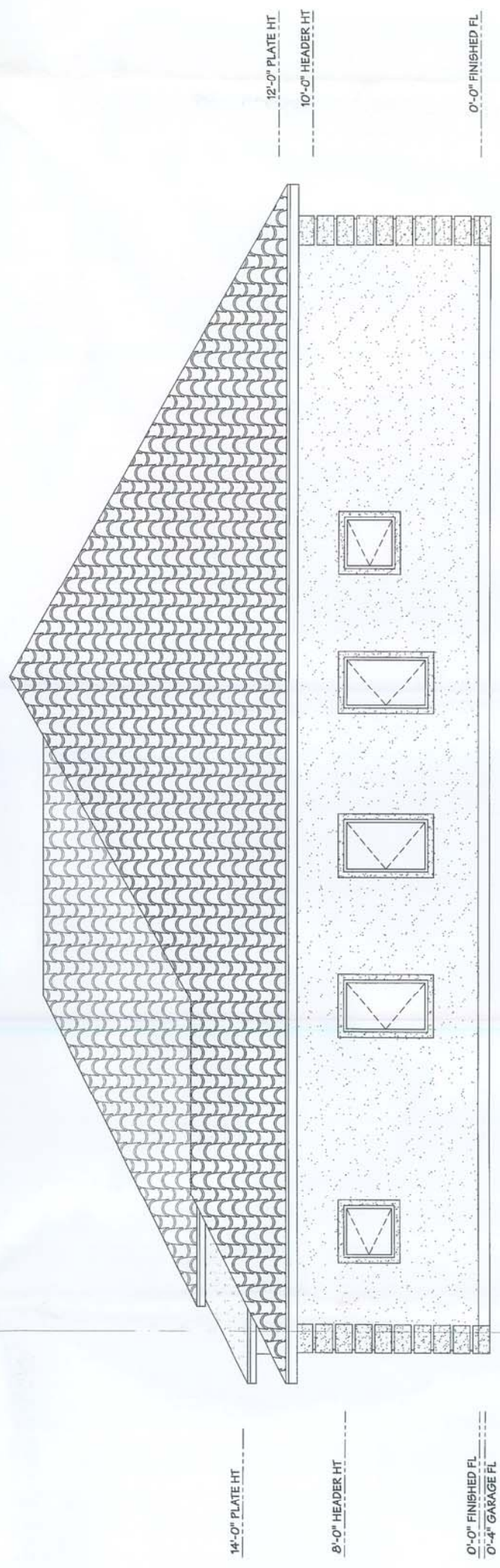
ENGINEERING SEAL:  
 THIS STRUCTURE HAS BEEN RECORDED  
 IN ACCORDANCE WITH THE  
 REQUIREMENTS OF THE  
 BUILDING CODE AND ASSET 7-01  
 FOR STRUCTURAL TYPING ONLY.

ARTHUR F. PRIEP, P.E.  
 8530 U.S. HIGHWAY 1, SUITE 8  
 MIAMI, FL 32976  
 PROFESSIONAL ENGINEER #24683

**FRONT/RIGHT ELEVATIONS**  
**SHEET A1.1**



**FRONT ELEVATION**  
 SCALE: 1/4" = 1'-0"



**RIGHT ELEVATION**  
 SCALE: 1/4" = 1'-0"

PO#	DATE	PO #	DATE
		3818	11.22.04
		REVISION	12.8.04
		REVISION	1.11.05
		REVISION	4.20.05

**THE BATTISTA RESIDENCE**

A CUSTOM DESIGN FOR

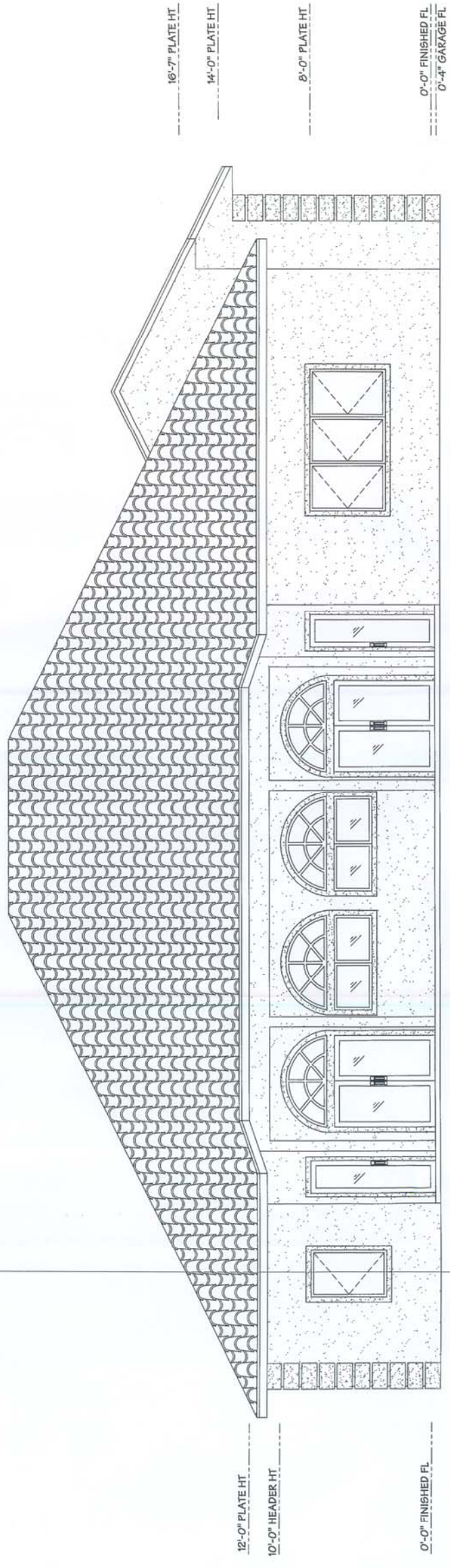
**TECH-ART**  
 DESIGN & ENGINEERING, INC.  
 8530 U.S. HIGHWAY 1, SUITE 8  
 MIAMI, FL 32976  
 (772) 663-6991

**ARTHUR F. PRIEP, P.E.**  
 8530 U.S. HIGHWAY 1, SUITE 8  
 MIAMI, FL 32976  
 PROFESSIONAL ENGINEER #24683

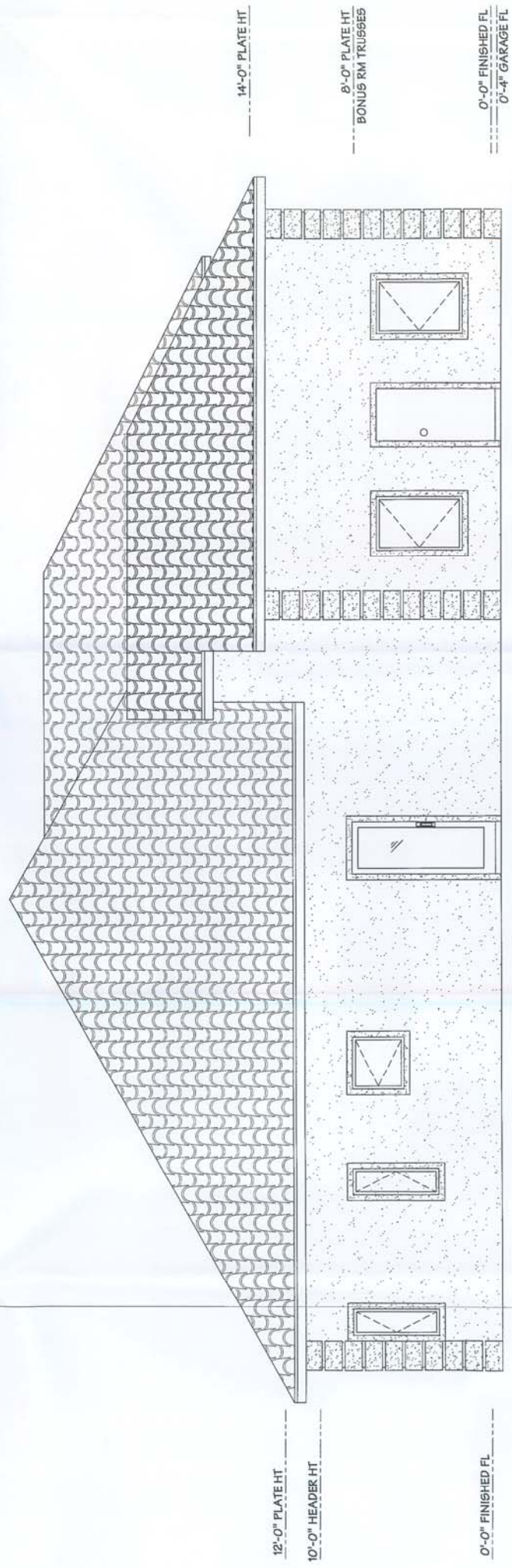
ENGINEERING SEAL:  
 THIS STRUCTURE HAS BEEN DESIGNED  
 TO MEET THE MINIMUM REQUIREMENTS  
 OF THE FLORIDA BUILDING CODE AND ASSET 7-98  
 FOR STRUCTURAL ELEVATIONS ONLY.

ARTHUR F. PRIEP, P.E.  
 8530 U.S. HIGHWAY 1, SUITE 8  
 MIAMI, FL 32976  
 PROFESSIONAL ENGINEER #24683

**REAR/LEFT  
 ELEVATIONS**  
**SHEET A1.2**



**REAR ELEVATION**  
 SCALE: 1/4" = 1'-0"



**LEFT ELEVATION**  
 SCALE: 1/4" = 1'-0"

DATE	PO #	DATE	PO #
9.17.04	3818	10.20.04	REVISION
11.22.04	ADDITION OF POOL	12.8.04	REVISION
1.11.05	REVISION	4.20.05	REVISION

# THE BATTISTA RESIDENCE

A CUSTOM DESIGN FOR

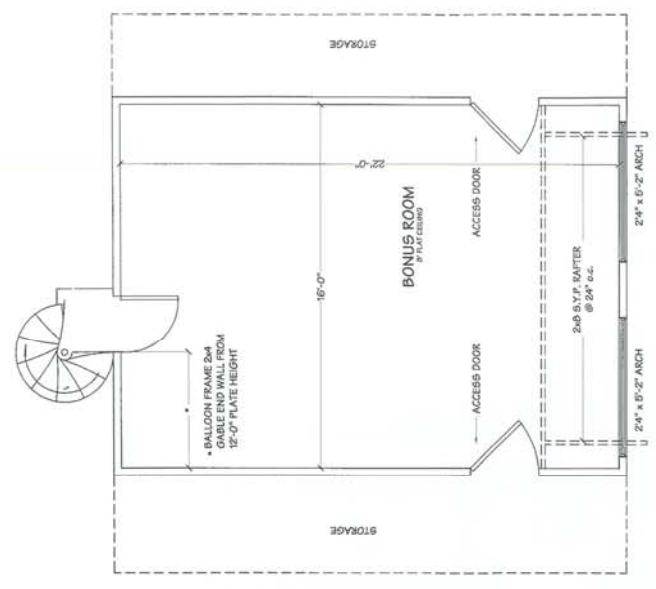
**TECH-ART**  
 DESIGN & ENGINEERING, INC.  
 8530 U.S. HIGHWAY 1, SUITE 8  
 MIAMI, FL 33297  
 (772) 663-6991

ARTHUR F. PRIEP, P.E.  
 PROFESSIONAL ENGINEER #24683  
 8530 U.S. HIGHWAY 1, SUITE 8  
 MIAMI, FL 33297

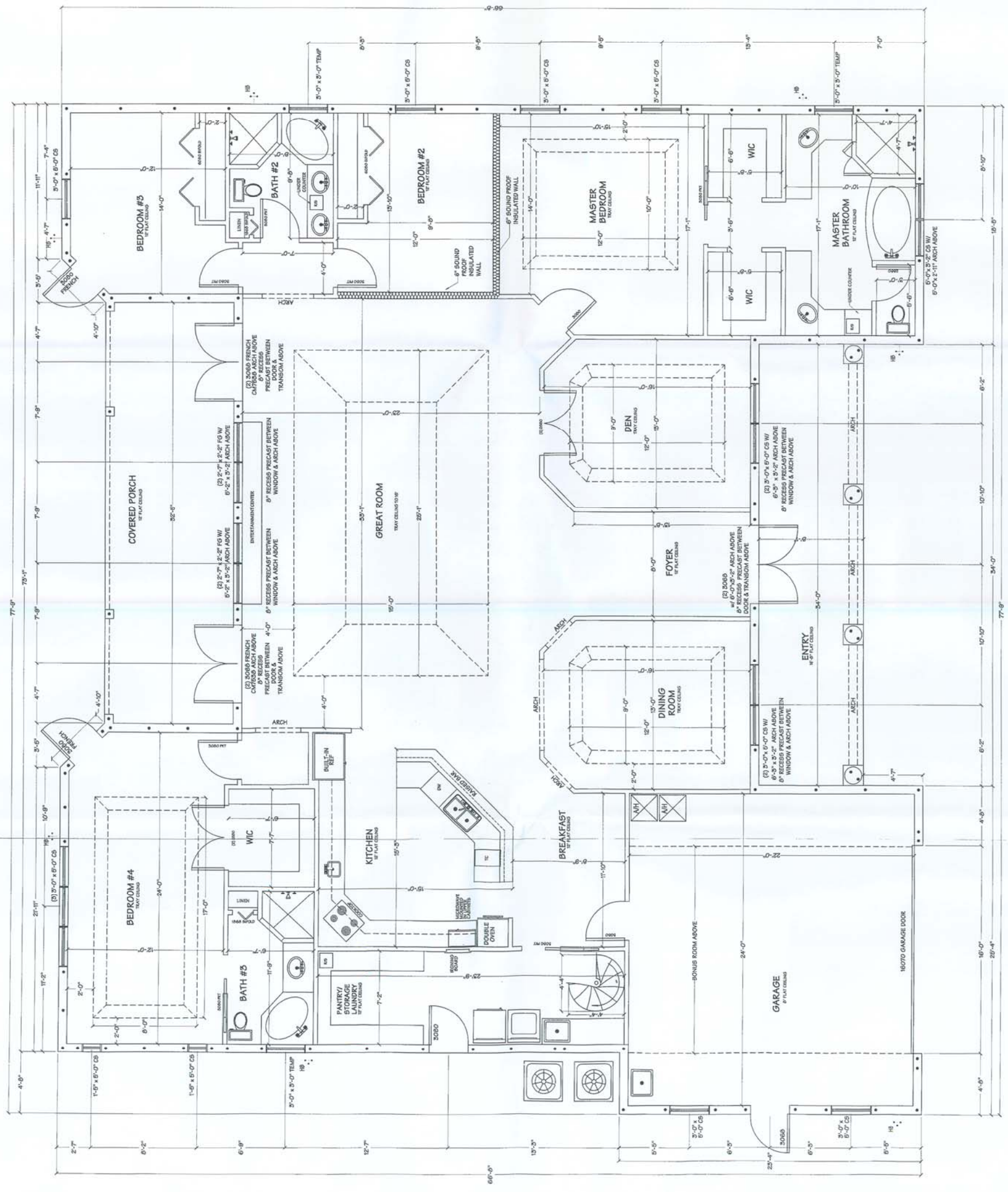
EXERCISES SET  
 THE ARCHITECT HAS BEEN ADVISED  
 BY THE STATE OF FLORIDA  
 THAT THE ARCHITECT IS NOT  
 TO BE RESPONSIBLE FOR THE  
 PERFORMANCE OF THE WORK

ARCHITECTURAL  
 FLOOR PLAN  
 SHEET A2.0

SQ. FT. TABULATION	
LIVING AREA	3527
GARAGE	581
BONUS ROOM	378
PORCH	444
ENTRY	64
TOTAL	4894



**BONUS ROOM FLOOR PLAN**  
 SCALE: 1/4" = 1'-0"



**FLOOR PLAN**  
 SCALE: 1/4" = 1'-0"

PO#	DATE	REVISION
	9.17.04	3818
	10.20.04	REVISION
	11.9.04	REVISION
	12.8.04	REVISION
	11.1.05	REVISION
	4.15.05	REVISION

# THE BATTISTA RESIDENCE

A CUSTOM DESIGN FOR

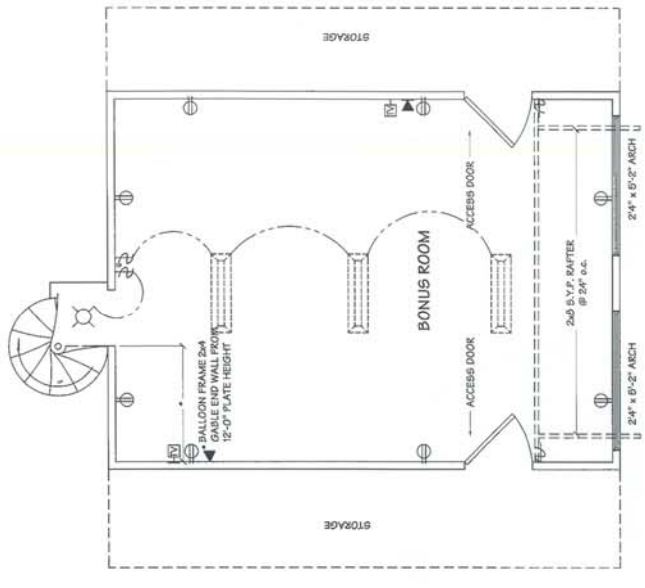
**TECH-ART**  
 DESIGN & ENGINEERING, INC.  
 8530 U.S. HIGHWAY 1, SUITE 8  
 MICCO, FL 32976  
 (772) 663-6991

**ARTHUR F. PRIEP, P.E.**  
 PROFESSIONAL ENGINEER #24883  
 8530 U.S. HIGHWAY 1, SUITE 8  
 MICCO, FL 32976

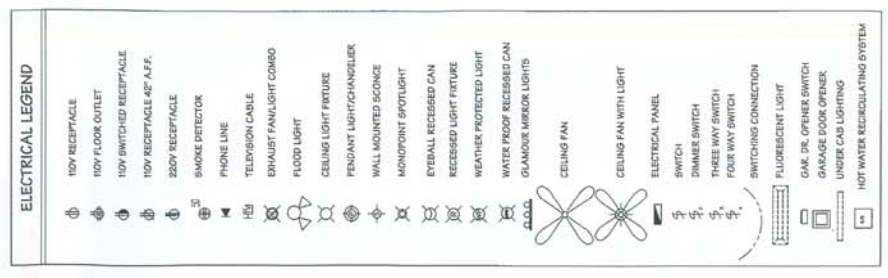
EXHAUSTING COIL  
 HAS OPERATOR HAS BEEN DESIGNED  
 TO MEET THE LUMENS REQUIREMENTS  
 OF CHAPTER 9.6, 2001 IBC/IRC  
 PER THE 2001 IBC/IRC PER  
 THE INTERNATIONAL CODES UNIT

ARTHUR F. PRIEP, P.E.  
 8530 U.S. HIGHWAY 1, SUITE 8  
 MICCO, FL 32976  
 PROFESSIONAL ENGINEER #24883

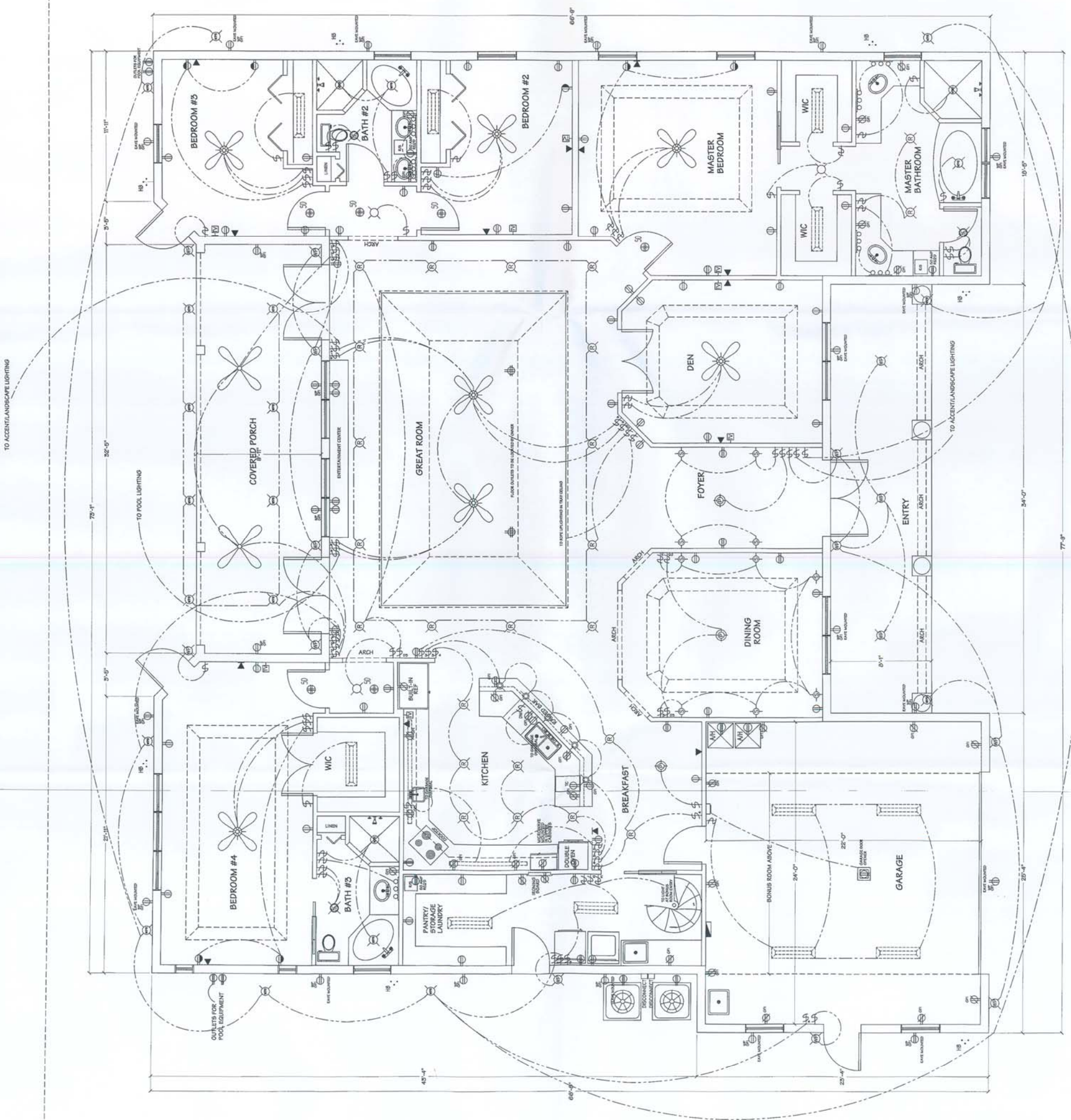
**ELECTRICAL PLAN**  
**SHEET A3.0**



**BONUS ROOM ELECTRICAL PLAN**  
 SCALE: 1/4" = 1'-0"



NOTE: BEDROOM CIRCUITS TO BE A.C.-FAULT PROTECTED



**ELECTRICAL PLAN**  
 SCALE: 1/4" = 1'-0"

PO #	DATE	ENG	REVISION
		1.3.05	
		4.15.05	

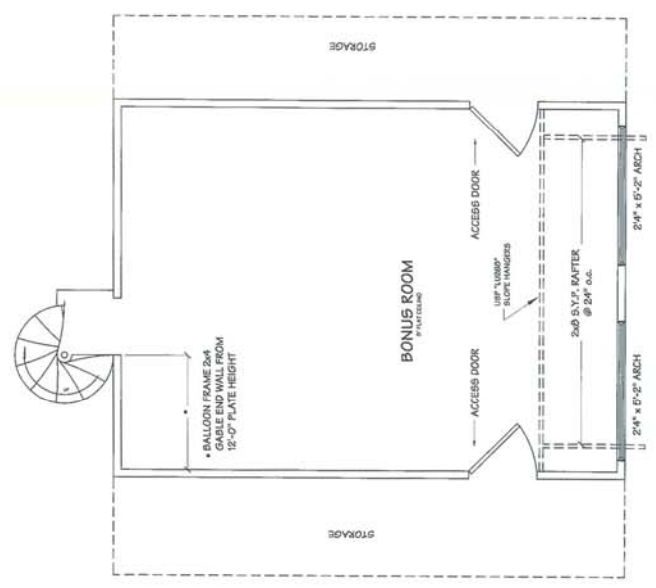
# THE BATISTA RESIDENCE

A CUSTOM DESIGN FOR

TECH-ART  
DESIGN & ENGINEERING, INC.  
8530 U.S. HIGHWAY 1, SUITE 8  
MCCO, FL 32976  
(772) 663-6991

ARTHUR F. PRIEP, P.E.  
PROFESSIONAL ENGINEER #24683  
8530 U.S. HIGHWAY 1, SUITE 8  
MCCO, FL 32976

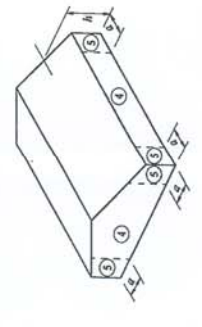
STRUCTURAL FLOOR PLAN  
SHEET \$1.0



**BONUS ROOM FLOOR PLAN**  
SCALE: 1/4" = 1'-0"

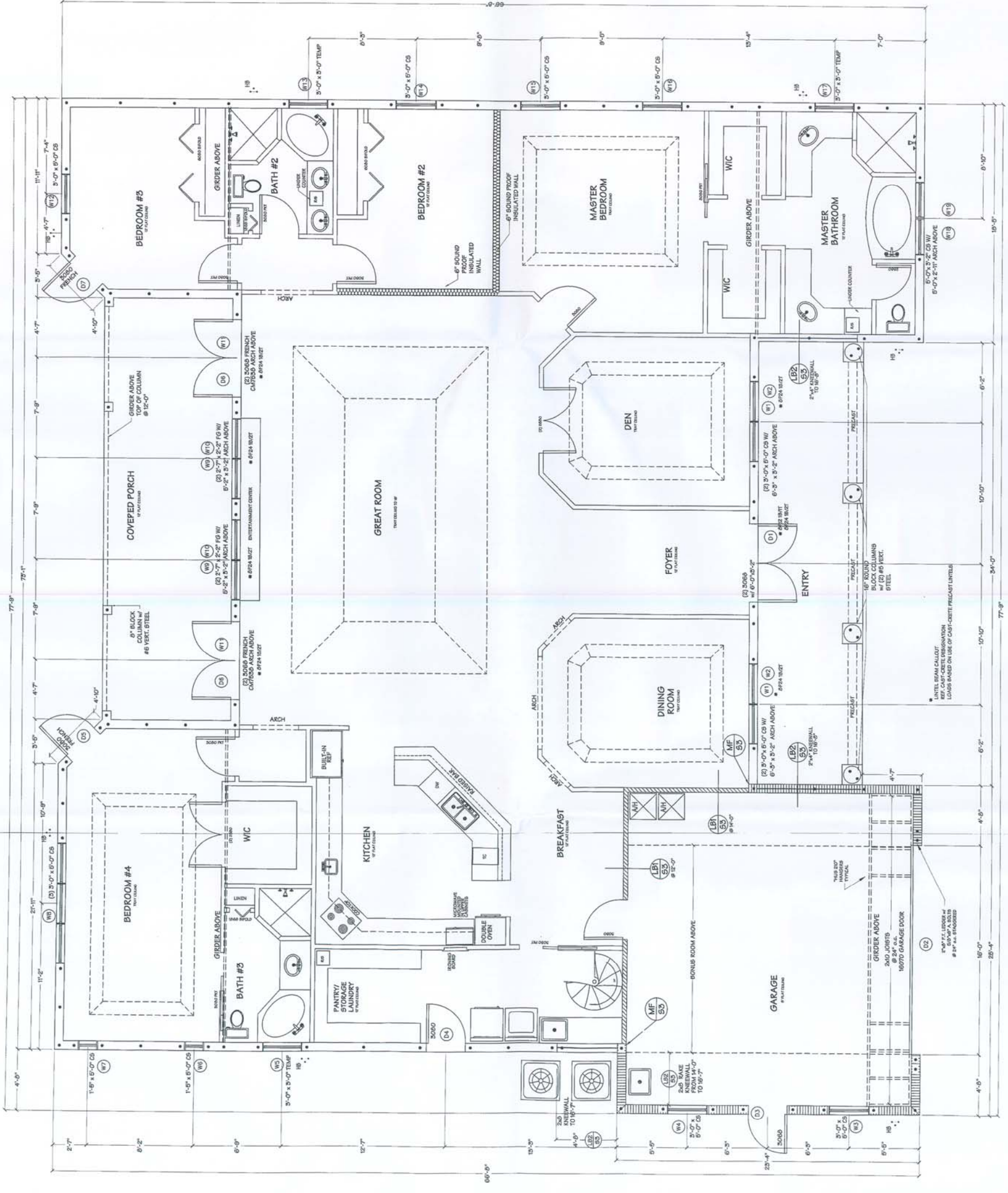
## FLORIDA BUILDING CODE, 2001 DESIGN PRESSURES FOR OPENINGS

OPENING TYPE	DESCRIPTION	LOCATION	ZONE	OPENING ELEV. (ft)	OPENING WIDTH (ft)	OPENING HEIGHT (ft)	MAXIMUM POSITIVE PRESSURE (psf)	MAXIMUM NEGATIVE PRESSURE (psf)
W1	3000 Casement	4	4	23.7	6	5	35.7	-35.7
W2	3000 Casement	4	4	23.7	6	5	35.7	-35.7
W3	3000 Casement	4	4	23.7	6	5	35.7	-35.7
W4	3000 Casement	4	4	23.7	6	5	35.7	-35.7
W5	3000 Casement	4	4	23.7	6	5	35.7	-35.7
W6	3000 Casement	4	4	23.7	6	5	35.7	-35.7
W7	3000 Casement	4	4	23.7	6	5	35.7	-35.7
W8	3000 Casement	4	4	23.7	6	5	35.7	-35.7
W9	3000 Casement	4	4	23.7	6	5	35.7	-35.7
W10	3000 Casement	4	4	23.7	6	5	35.7	-35.7
W11	3000 Casement	4	4	23.7	6	5	35.7	-35.7
W12	3000 Casement	4	4	23.7	6	5	35.7	-35.7
W13	3000 Casement	4	4	23.7	6	5	35.7	-35.7
W14	3000 Casement	4	4	23.7	6	5	35.7	-35.7
W15	3000 Casement	4	4	23.7	6	5	35.7	-35.7
W16	3000 Casement	4	4	23.7	6	5	35.7	-35.7
W17	3000 Casement	4	4	23.7	6	5	35.7	-35.7
W18	3000 Casement	4	4	23.7	6	5	35.7	-35.7
W19	3000 Casement	4	4	23.7	6	5	35.7	-35.7



Width of Edge Strip (ft) = 6.667

FIG. 1-101  
Copyright 2002, Structures International, LLC



**FLOOR PLAN**  
SCALE: 1/4" = 1'-0"

- #6 REIN. IN POURED CELL
- BLOCK @ 12'-0"
- BLOCK @ 14'-0"
- FRAME BEARING WALL @ 12'-0" o.c.

PO#	DATE	PO #	DATE

# THE BATISTA RESIDENCE

A CUSTOM DESIGN FOR

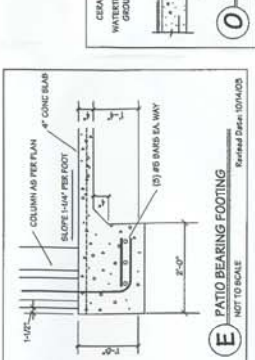
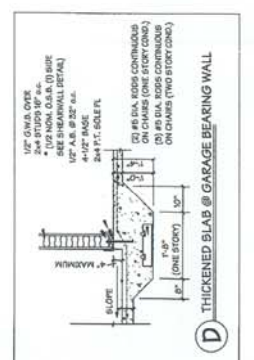
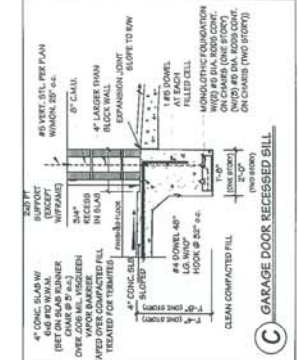
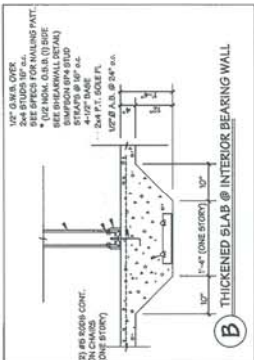
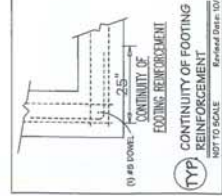
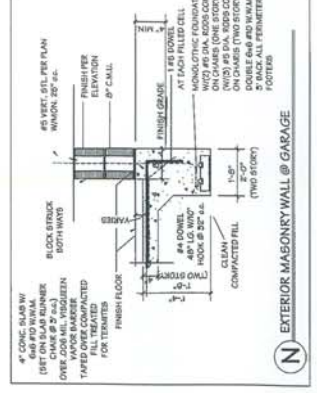
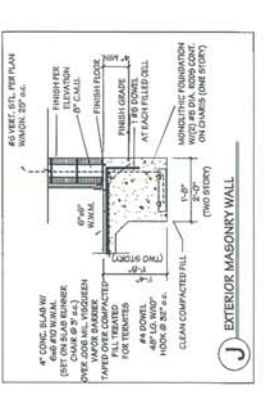
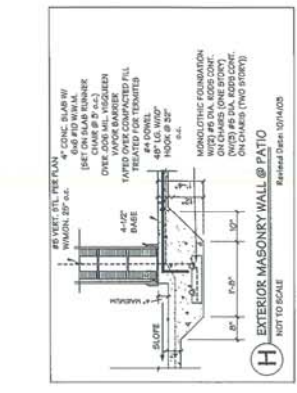
**TECH-ART**  
DESIGN & ENGINEERING, INC.  
8530 U.S. HIGHWAY 1, SUITE 8  
MICO, FL 32976  
(772) 663-6991

**ARTHUR F. PRIEP, P.E.**  
PROFESSIONAL ENGINEER #24683  
8530 U.S. HIGHWAY 1, SUITE 8  
MICO, FL 32976

**FOUNDATION PLAN**

ARTHUR F. PRIEP, P.E.  
8530 U.S. HIGHWAY 1, SUITE 8  
MICO, FL 32976  
PROFESSIONAL ENGINEER #24683

**FOUNDATION PLAN**  
**SHEET 52.0**



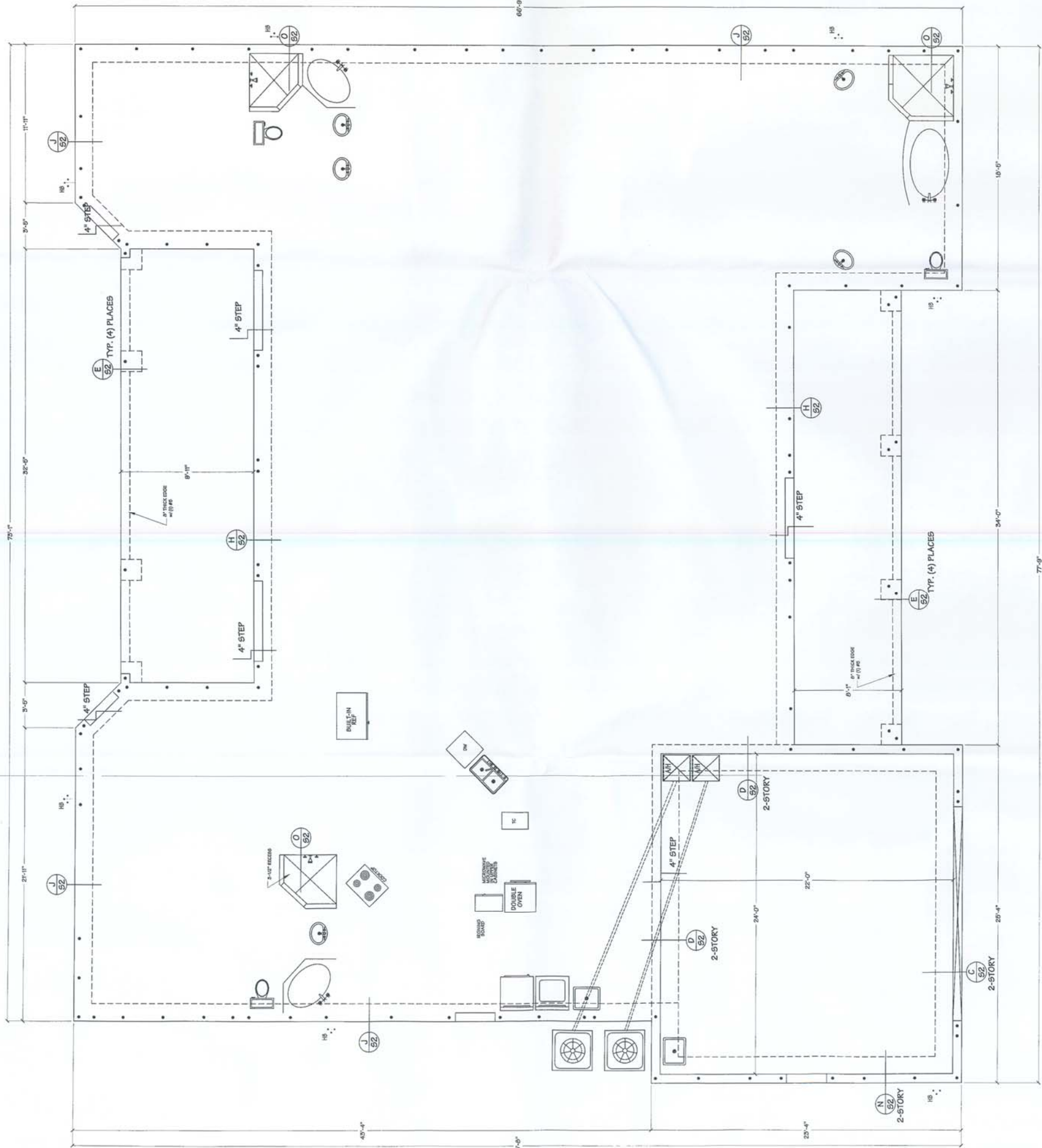
**O SHOWER CURB**  
NOT TO SCALE

**P FRONT ENTRY THICKENED EDGE**  
NOT TO SCALE

**TYP ANCHOR BOLT LAYOUT**  
NOT TO SCALE

**TYP BEARING PENETRATION DETAIL**  
NOT TO SCALE

NOTES:  
1. ALL SLAB & FOOTERS TO BE 2500 PSI CONCRETE.  
2. ALL STEEL IN GRADED CELLS & BOND BEAM TO BE GRADE 60.  
3. ALL MATERIAL USED BELOW FINISHED FLOOR ELEVATION WILL BE MOISTURE RESISTANT.  
4. #5 CONCRETE MINIMUM 2\"/>



**FOUNDATION PLAN**  
SCALE: 1/4" = 1'-0"