

PORTFOLIO |

UPDATE 2010

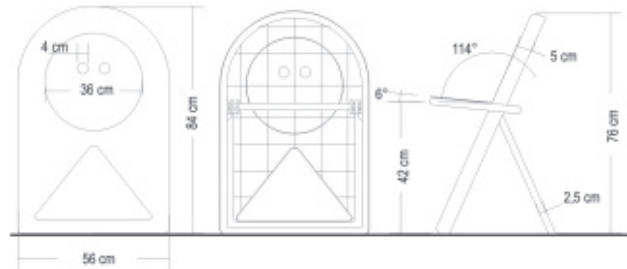
CLAUDIA DONDOSSOLA | D&E

CLAUDIA.DONDOSSOLA@GMAIL.COM

0039 380 70 40 683

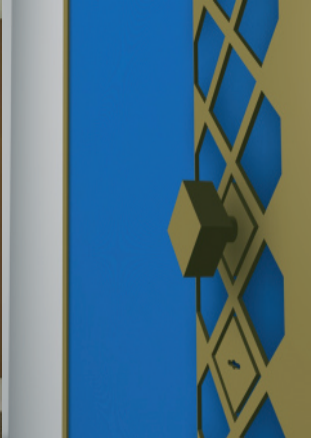
2003/2004
PROJECT LAB

COUPLE OF PLASTIC
FOLDING CHAIRS
"LUI & LEI", 3D
MODEL IN
THINKDESIGN



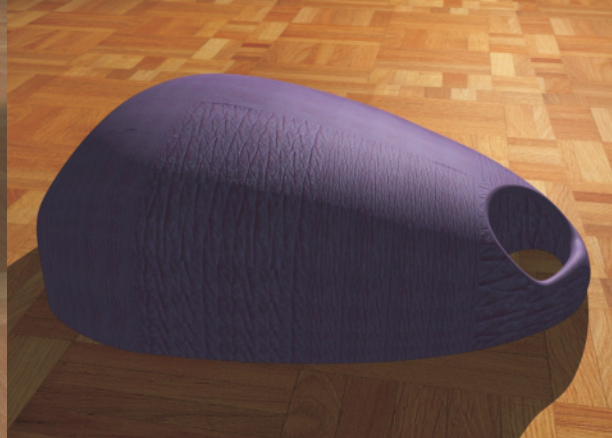
2004/2005
WORKSHOP FOR
GARDESA

ARMoured DOORS,
INSPIRATED BY
MULTIETHNICAL WAY
OF LIFE - 3D MODEL
IN THINKDESIGN,
RENDERS IN
CINEMA4D,
ENVIRONMENTS IN
CORELPAINT



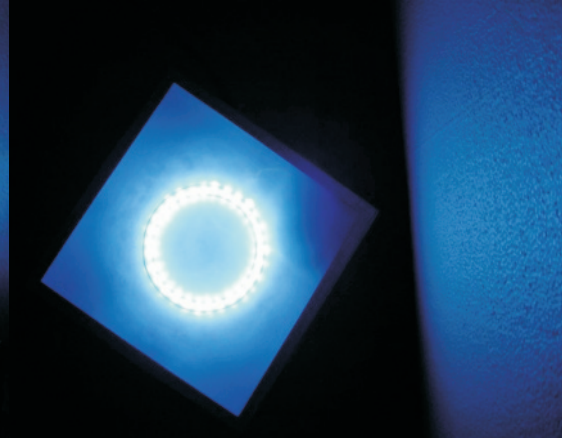
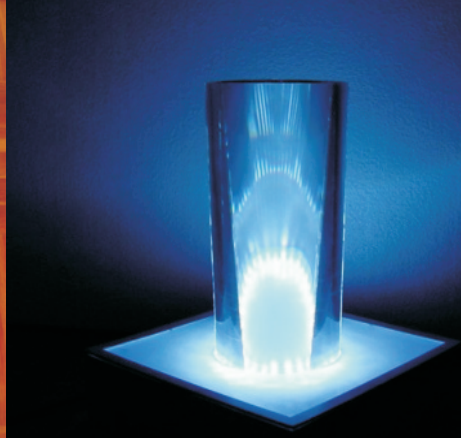
2005/2006
VIRTUAL LAB

PHYSICAL MODEL
CAPTURED THROUGH
PHOTOES AND
EDITED WITH
SPECIFIC SOFTWARE.
RENDERS IN
CINEMA4D



2005/2006
FINAL PROJECT (3RD
YEAR)

“HI-GLOW” -
ATMOSPHERE LED
LAMP
PICTURES OF THE
FINAL MODEL
(PERSONALLY
REALIZED WITH
THERMOFORMED
PLASTIC)



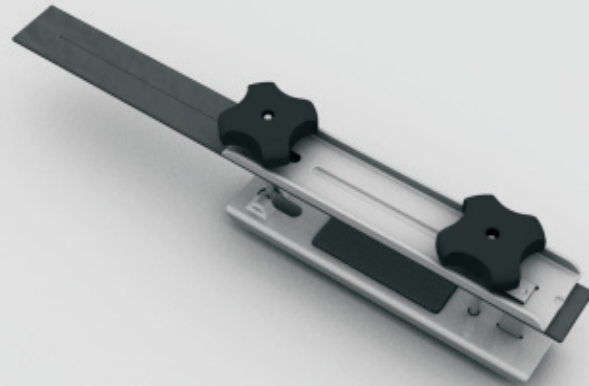
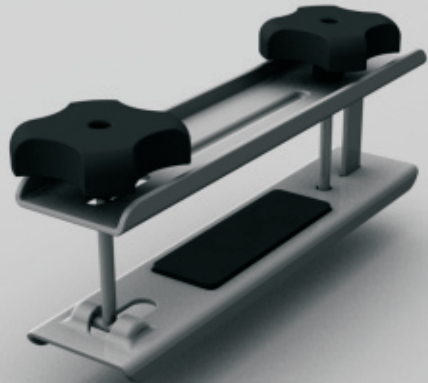
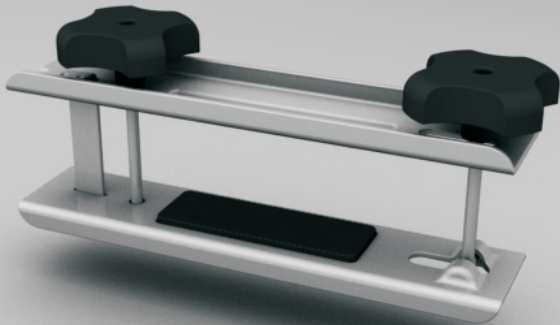
2005/2006
PRODUCT
DEVELOPMENT LAB

RE-STYLE OF A
BLENDER -
STARTING FROM A
CHEAP BLENDER,
RESTYLE AND
IMPROVEMENT.
MODEL IN PRO-E,
RENDERS IN
CINEMA4D
(CONCEPT &
ENGINEERING)



2006/2007
WORKSHOP FOR
FAPA

CHEAP AND EASY
TO MOUNT SKI-BOX
MOUNTING SYSTEM,
STARTING FROM THE
EXISTING FAPA
PRODUCT.
(CONCEPT &
ENGINEERING)



2006/2007
PRODUCT
DEVELOPMENT LAB

CONCEPT FOR
SIGHTSEEN
THREWEELS (APE
PIAGGIO)

