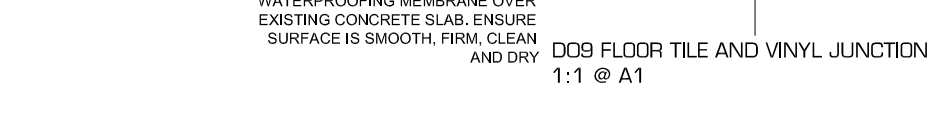
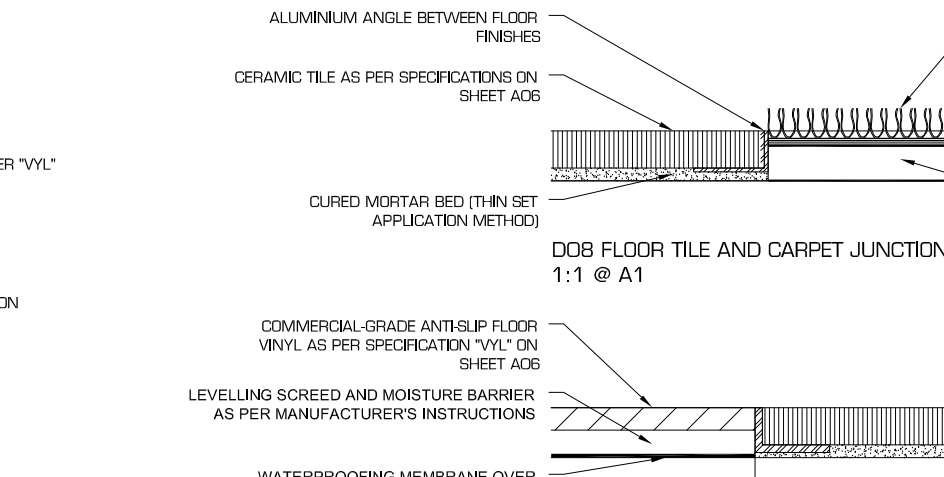
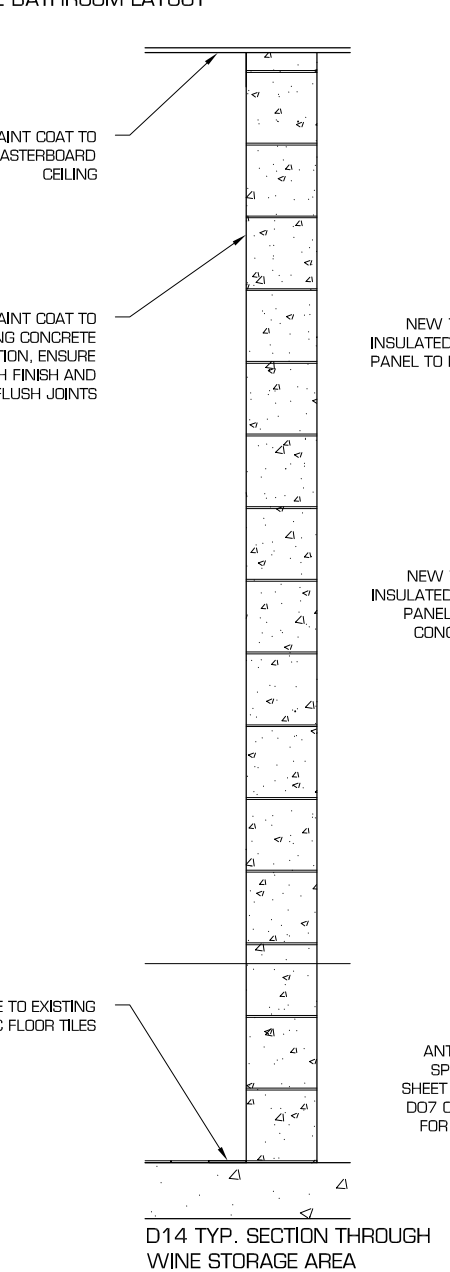
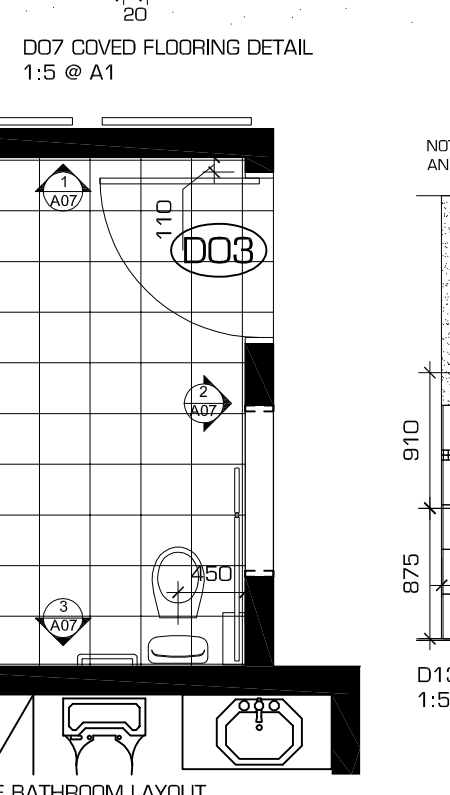
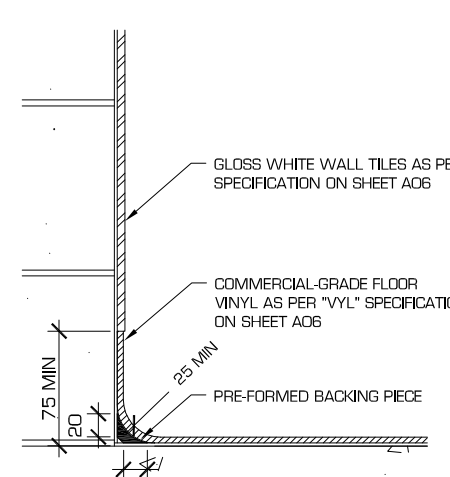
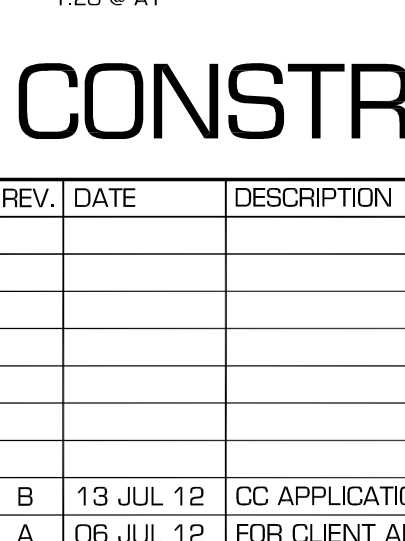
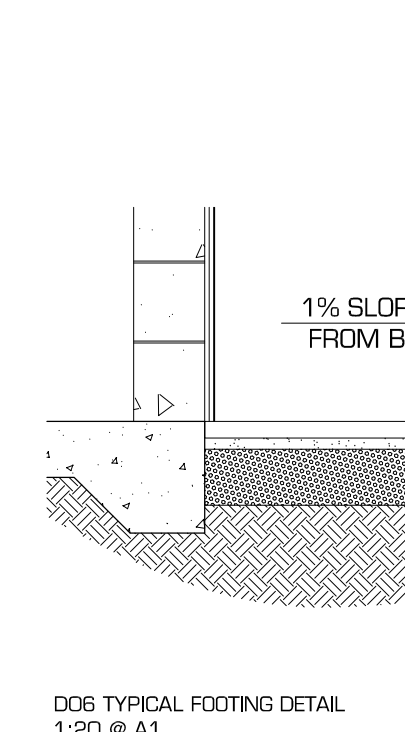
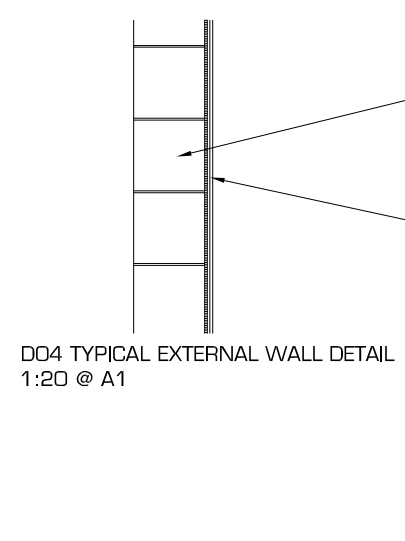
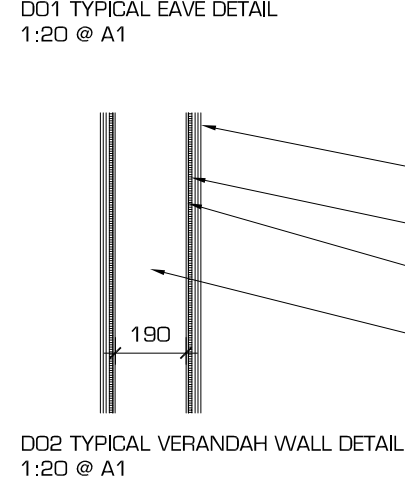
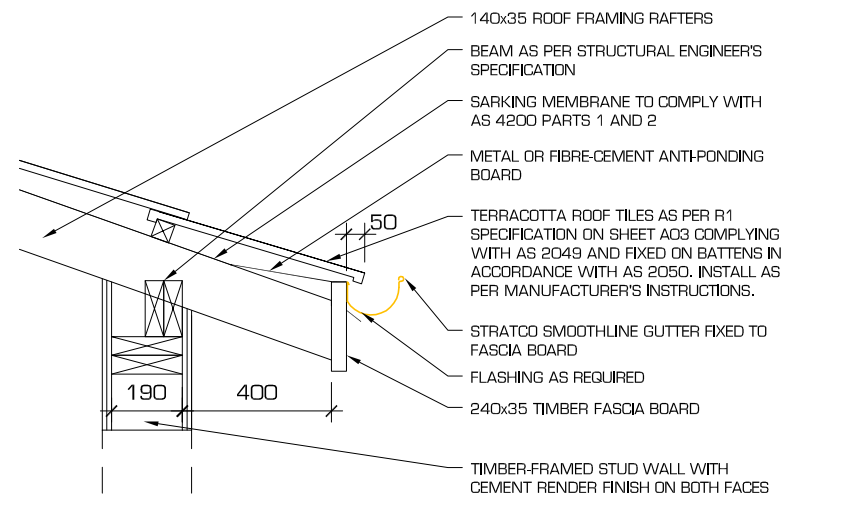
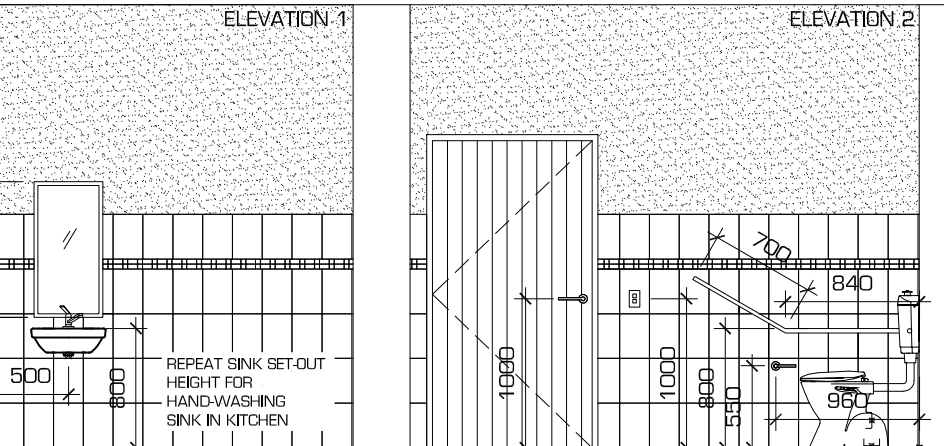


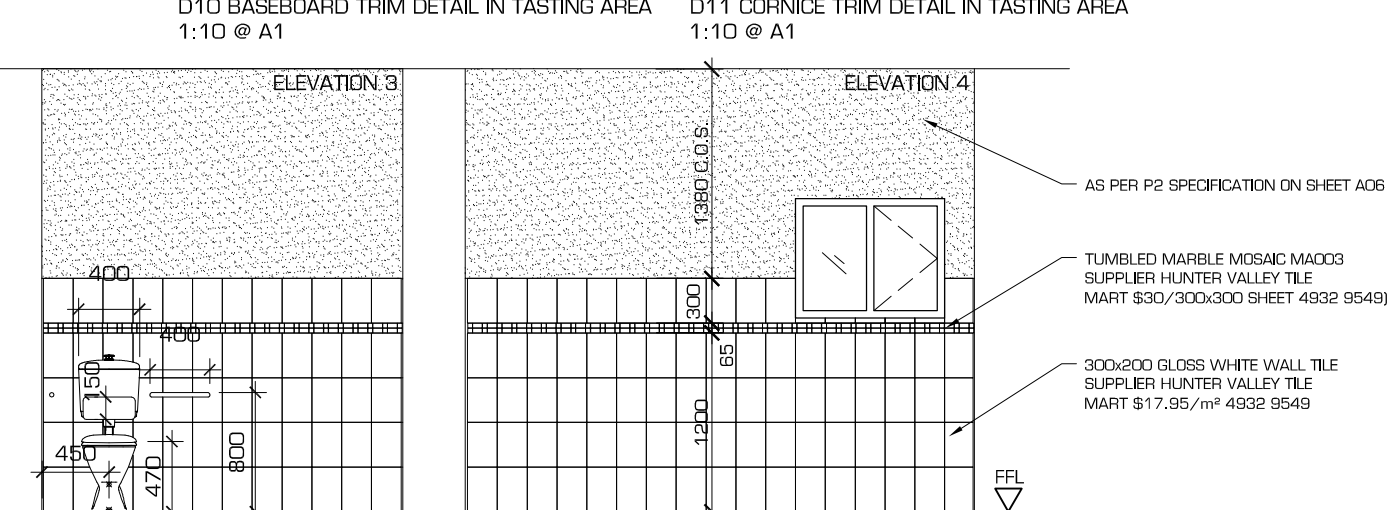
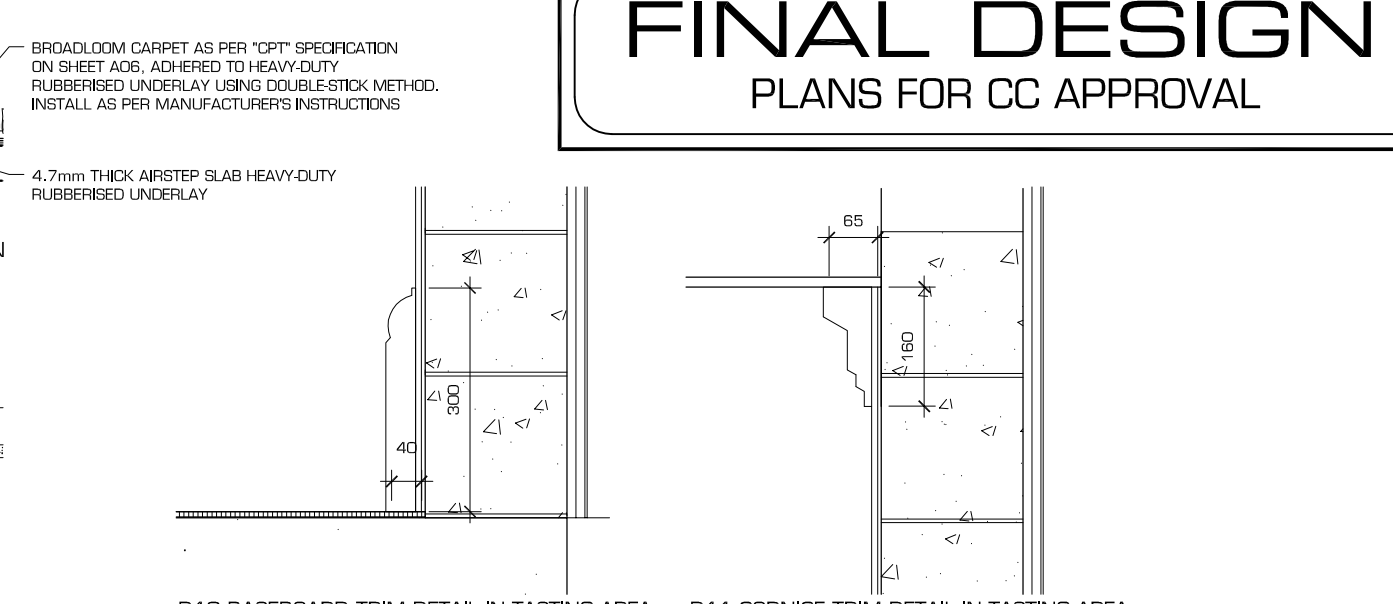
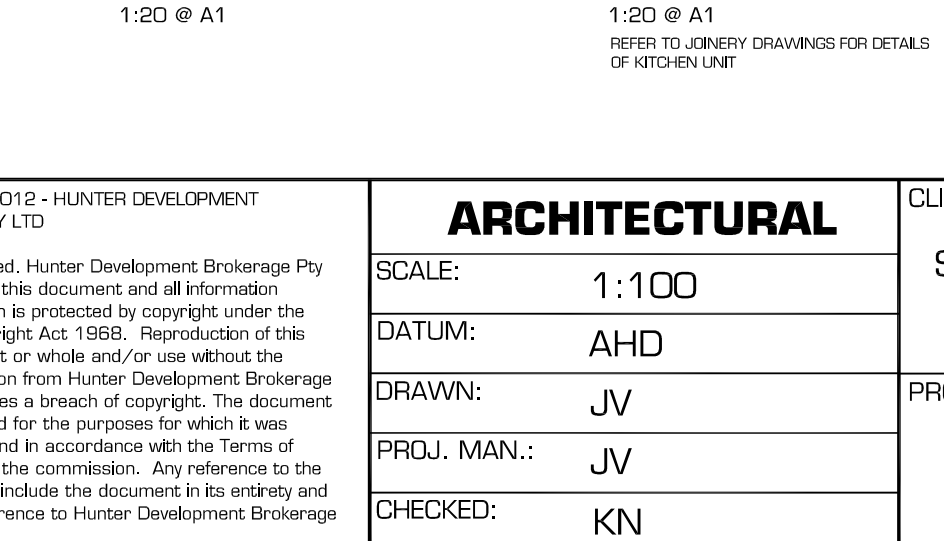
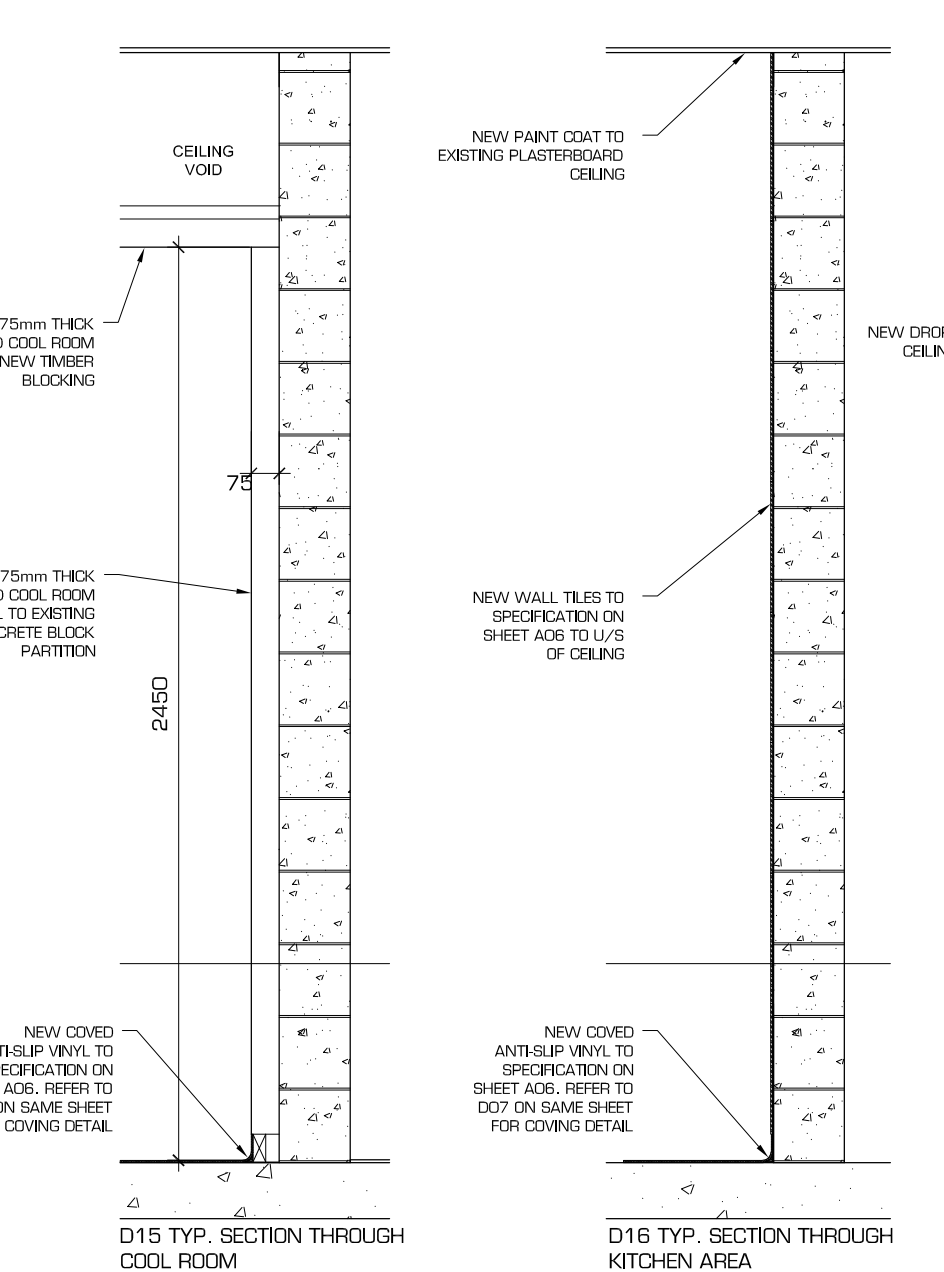
# FINAL DESIGN PLANS FOR CC APPROVAL



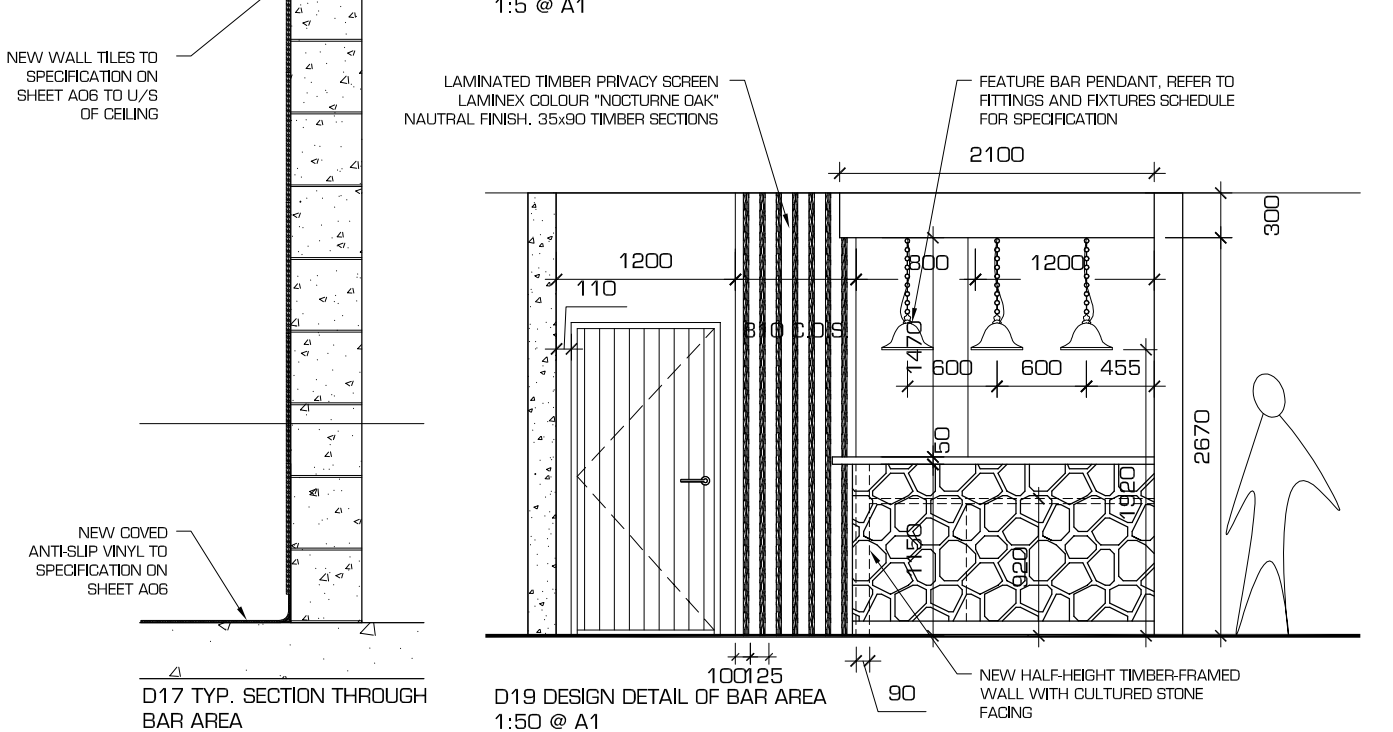
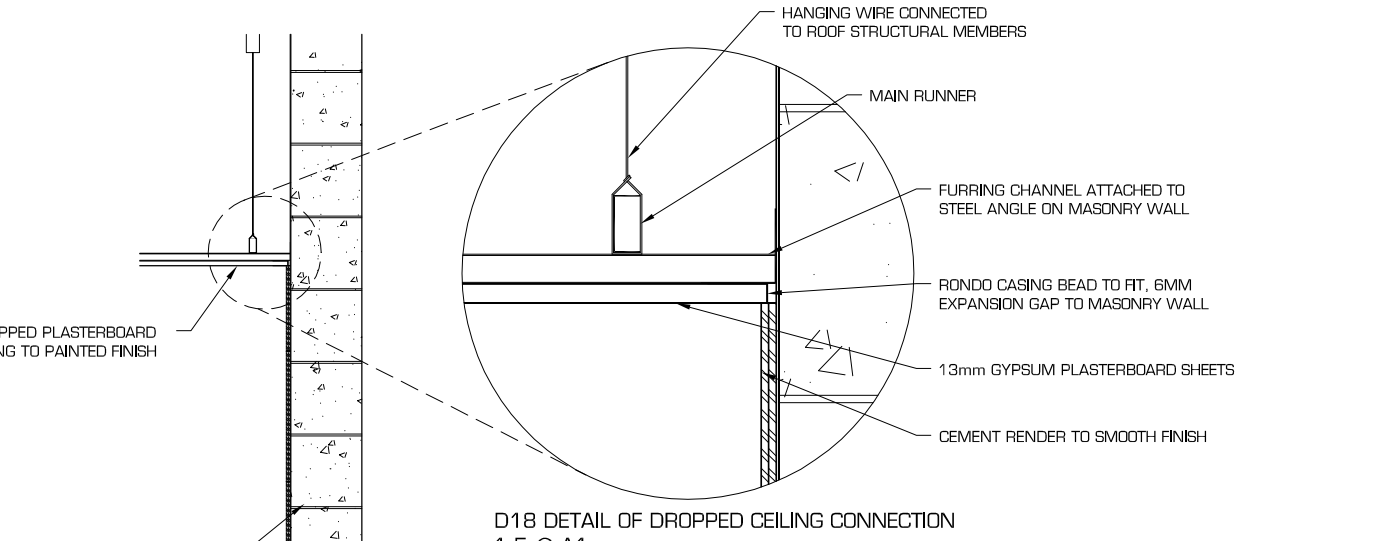
NOTE: SPECIFICATIONS, LOCATIONS AND SET-OUTS OF ALL SANITARY FIXTURES, GUARD RAILS, MIRROR, SOAP DISPENSER AND PAPER TOWEL DISPENSER TO COMPLY WITH AS 1428.1



D13 ACCESSIBLE INTERIOR ELEVATIONS 1:50 @ A1



D10 BASEBOARD TRIM DETAIL IN TASTING AREA 1:10 @ A1  
D11 CORNICE TRIM DETAIL IN TASTING AREA 1:10 @ A1



D18 DETAIL OF DROPPED CEILING CONNECTION 1:5 @ A1  
D19 DESIGN DETAIL OF BAR AREA 1:50 @ A1

## CONSTRUCTION AND DESIGN DETAILS

REV.	DATE	DESCRIPTION	INITIAL
B	13 JUL 12	CC APPLICATION	JV
A	06 JUL 12	FOR CLIENT APPROVAL	JV

**HDB**  
TownPlanning & Design  
1st Floor, 44 Church Street, PO Box 40, MAITLAND NSW 2320  
P: (02) 4933 6682 F: (02) 4933 6683  
E: admin@hdb.com.au W: www.hdb.com.au  
ABN 35 078 017 508

© COPYRIGHT 2012 - HUNTER DEVELOPMENT BROKERAGE PTY LTD  
All rights reserved. Hunter Development Brokerage Pty Ltd advises that this document and all information contained therein is protected by copyright under the Australian Copyright Act 1968. Reproduction of this document in part or whole and/or use without the written permission from Hunter Development Brokerage Pty Ltd constitutes a breach of copyright. The document may only be used for the purposes for which it was commissioned and in accordance with the Terms of Engagement for the commission. Any reference to the document must include the document in its entirety and also include reference to Hunter Development Brokerage Pty Ltd.

**ARCHITECTURAL**  
SCALE: 1:100  
DATUM: AHD  
DRAWN: JV  
PROJ. MAN.: JV  
CHECKED: KN

CLIENT: BTA HOLDINGS  
STEVE ALLEN/CRAIG BROWN-THOMAS  
P.O. BOX 484  
RUTHERFORD NSW 2320  
PROJECT: MOON MOUNTAIN CELLAR DOOR  
1733 BROKE ROAD, POKOLBIN  
LOT 21 DP 543682

TITLE: CONSTRUCTION AND DESIGN DETAILS  
SHEET NO: 8 OF 8  
DATE: 13 JUL 2012  
DRAWING NO: A07  
REF: 12/036  
DIR:  
REV: B