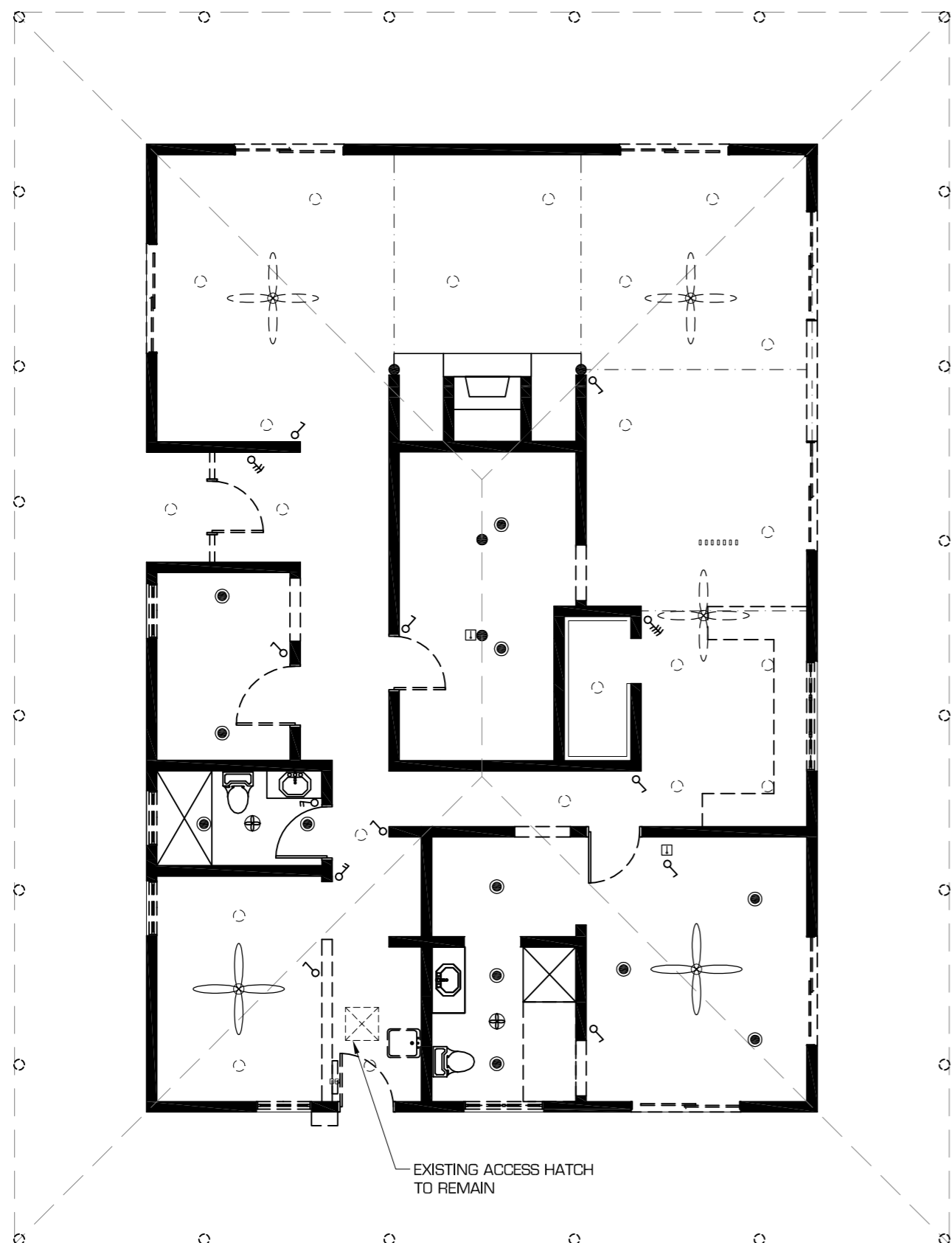
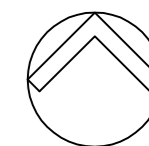


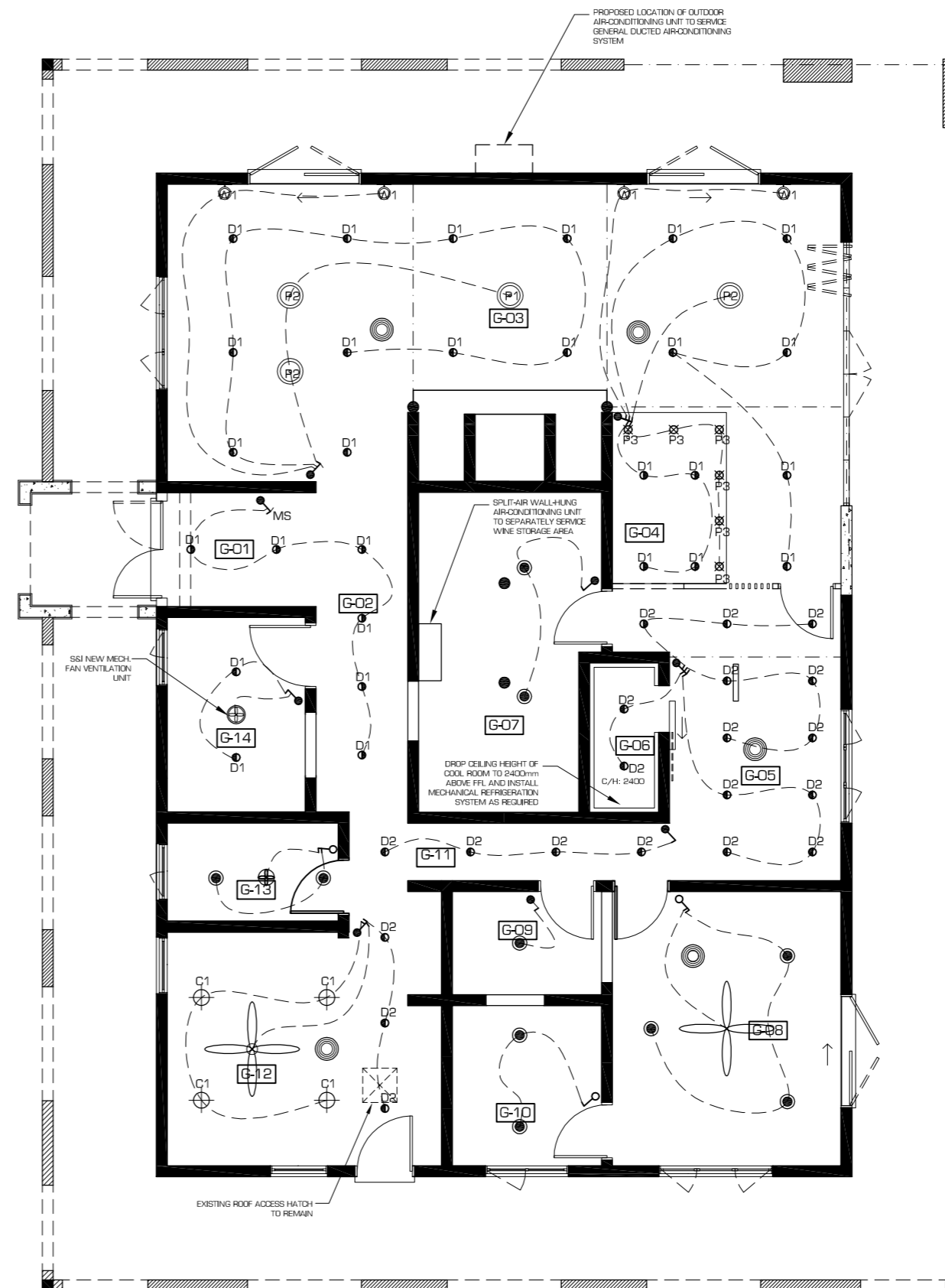
FIRE SAFETY PROVISIONS

AN AUTOMATIC SMOKE DETECTION SYSTEM IN ACCORDANCE WITH AS1670.1 AND SPECIFICATION E2.2a SMOKE DETECTION AND ALARM SYSTEMS OF THE NCC 2012 VOL. 1, IS TO BE INSTALLED. PORTABLE FIRE EXTINGUISHERS IN ACCORDANCE WITH AS2444 ARE TO BE PROVIDED. EXIT SIGNS IN ACCORDANCE WITH AS2933.1 ARE TO BE INSTALLED. ALL FIRE SAFETY SERVICES ARE SUBJECT TO DESIGN BY A FIRE SERVICES CONTRACTOR. CERTIFICATION AND AS-BUILT DRAWINGS ARE TO BE SUBMITTED UPON COMPLETION OF MODIFICATIONS.

FINAL DESIGN
PLANS FOR CC APPROVAL



EXISTING RCP LAYOUT
1:100 @ A1



REVISED RCP LAYOUT
1:100 @ A1

EXISTING RCP LEGEND

- EXISTING DOWNLIGHT TO REMAIN
- EXISTING DOWNLIGHT TO RELOCATED OR REMOVED TO SUIT REVISED LAYOUT.
- EXISTING CEILING-MOUNTED FAN TO BE REMOVED (SHOWN DASHED - RETAIN FANS IN OFFICE AND BEDROOM)
- EXISTING A/C THERMOSTAT - CONTRACTOR TO RELOCATE / MODIFY / PROVIDE NEW AS MAY BE REQUIRED TO SUIT NEW LAYOUT + COMPLY WITH BCA.
- ALLOW TO MODIFY / PROVIDE NEW SWITCHING TO SUIT THE REVISED LAYOUT AND COMPLY WITH BCA - PROVIDE LOCALISED SWITCHING TO ALL ROOMS
- EXISTING MECHANICAL VENTILATION TO REMAIN

NEW RCP LEGEND

- MASTER SWITCH TO WHOLE BUILDING
- ALLOW TO MODIFY EXISTING SWITCHING TO SUIT REVISED LAYOUT
- ILLUMINATED EXIT LIGHTS. CONTRACTOR TO PROVIDE NEW AS REQUIRED TO SUIT NEW LAYOUT. COMPLY WITH BCA AND AS 2293.1-2005.
- NEW SMOKE DETECTION SYSTEM - CONTRACTOR TO PROVIDE NEW AS REQUIRED TO SUIT REVISED LAYOUT AND COMPLY WITH BCA + AS 1670.1.
- NEW 400mm DIA CIRCULAR AIR DIFFUSER (ALUMINIUM WITH WHITE POWDERCOAT FINISH) TO SUIT REVISED LAYOUT AND COMPLY WITH BCA + AS 1668.1. CONTRACTOR TO SSI INVERTER, DUCTWORK AND EXHAUST FAN SYSTEM AS REQUIRED.
- NEW MECHANICAL VENTILATION ON ISOLATED SWITCHING CIRCUIT TO NEW BATHROOM AND COOL ROOM TO SUIT REVISED LAYOUT AND COMPLY WITH BCA + AS 1668.1.
- A/C THERMOSTATS & CONTROL PANELS CONTRACTOR TO RELOCATE / MODIFY / PROVIDE NEW AS MAY BE REQUIRED TO SUIT REVISED LAYOUT AND COMPLY WITH BCA + AS 1668.1

CONTRACTOR TO PROVIDE REQUIRED CERTIFICATES OF COMPLIANCE FOR OCCUPATION CERTIFICATE RELEASE, AND AS-BUILT DRAWINGS, UPON COMPLETION OF WORKS. REFER TO FITTINGS AND FIXTURES SCHEDULE FOR PRODUCT SPECIFICATIONS AND SUPPLIERS.

- NEW ENERGY EFFICIENT COMPACT FLUORESCENT LIGHT SWITCH ON INDEPENDENT SWITCHING
- NEW RECESSED DOWNLIGHTS ON INDEPENDENT SWITCHES WITH DIMMABLE SETTING. WARM WHITE GLOBE.
- NEW RECESSED DOWNLIGHTS ON INDEPENDENT SWITCHES WITH DIMMABLE SETTING. COOL WHITE GLOBE.
- NEW HIGHLIGHT PENDANT ON INDEPENDENT SWITCH
- NEW FEATURE PENDANTS ON INDEPENDENT SWITCH
- NEW BAR PENDANTS ON INDEPENDENT SWITCH
- NEW WALL-MOUNTED SCENCE ON INDEPENDENT SWITCH

REFLECTED CEILING PLANS

REV.	DATE	DESCRIPTION	INITIAL
B	13 JUL 12	CC APPLICATION	JV
A	06 JUL 12	FOR CLIENT APPROVAL	JV

HDB
TownPlanning & Design
1st Floor, 44 Church Street, PO Box 40, MAITLAND NSW 2320
P: (02) 4933 6682 F: (02) 4933 6683
E: admin@hdb.com.au W: www.hdb.com.au
ABN 35 078 017 508

© COPYRIGHT 2012 - HUNTER DEVELOPMENT BROKERAGE PTY LTD
All rights reserved. Hunter Development Brokerage Pty Ltd advises that this document and all information contained therein is protected by copyright under the Australian Copyright Act 1968. Reproduction of this document in part or whole and/or use without the written permission from Hunter Development Brokerage Pty Ltd constitutes a breach of copyright. The document may only be used for the purposes for which it was commissioned and in accordance with the Terms of Engagement for the commission. Any reference to the document must include the document in its entirety and also include reference to Hunter Development Brokerage Pty Ltd.

ARCHITECTURAL
SCALE: 1:100
DATUM: AHD
DRAWN: JV
PROJ. MAN.: JV
CHECKED: KN

CLIENT: BTA HOLDINGS
STEVE ALLEN/CRAIG BROWN-THOMAS
P.O. BOX 484
RUTHERFORD NSW 2320
PROJECT: MOON MOUNTAIN CELLAR DOOR
1733 BROKE ROAD, POKOLBIN
LOT 21 DP 543682

EXISTING RCP AND REVISED RCP		
SHEET NO: 6 OF 8	DATE: 13 JUL 2012	REV:
DRAWING NO: A05	REF: 12/036	B
DIR: G:\Jobs\2012\12036 - BTA Holdings - JV - CC for Moon Mountain Cellar Door\Drawings		