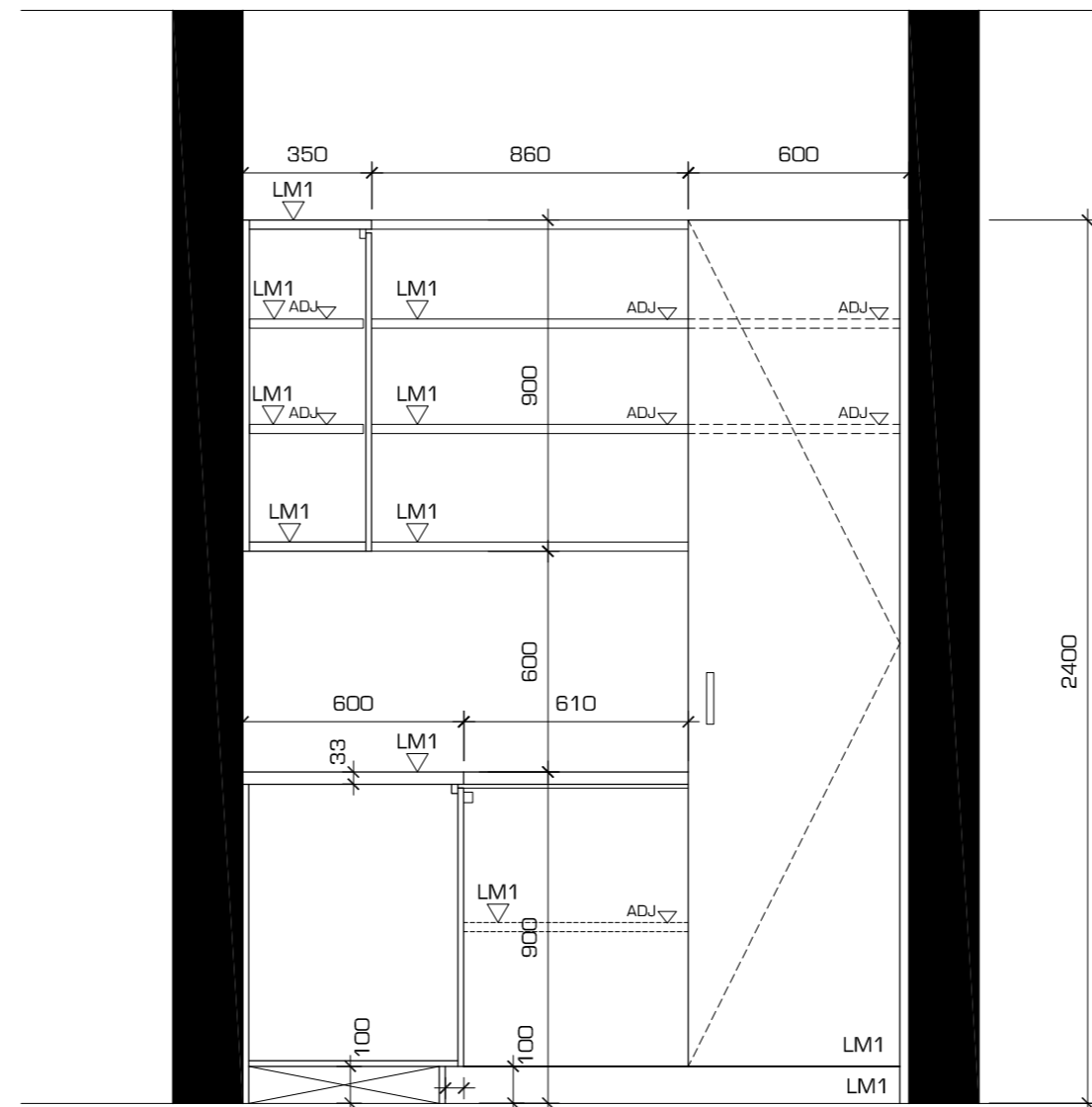


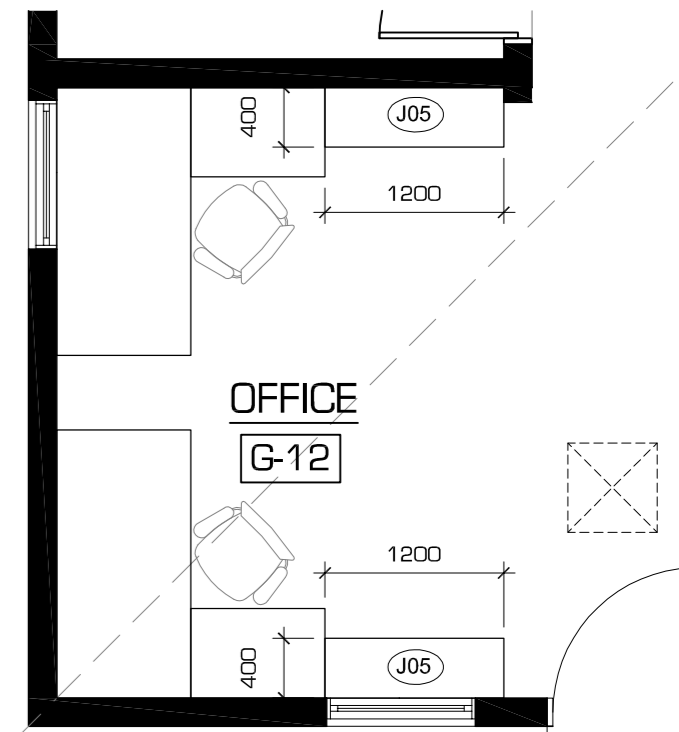
JO4 LOCATION
1:50 @ A2



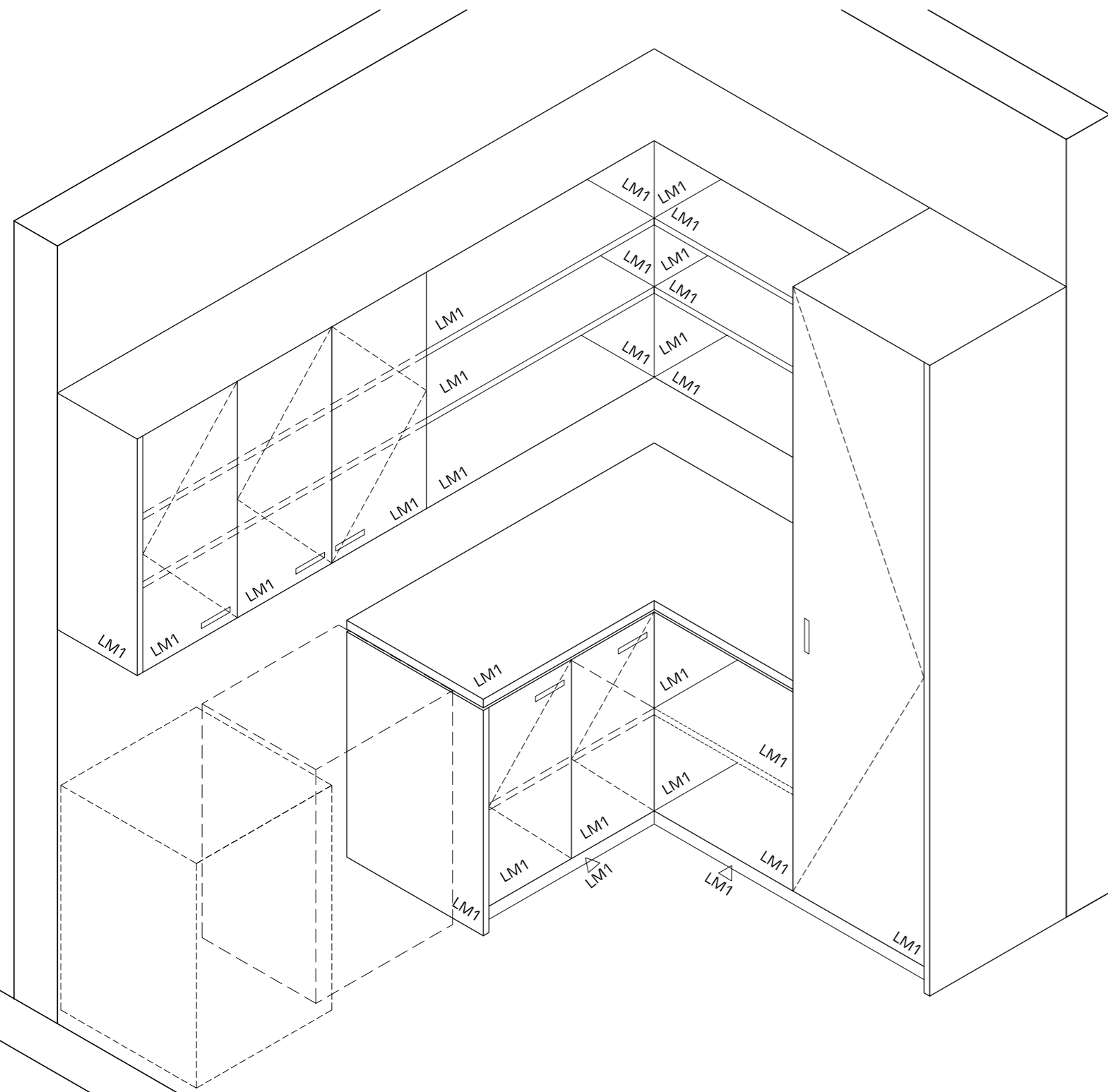
JO4 ELEVATION 1
1:20 @ A2

LEGEND

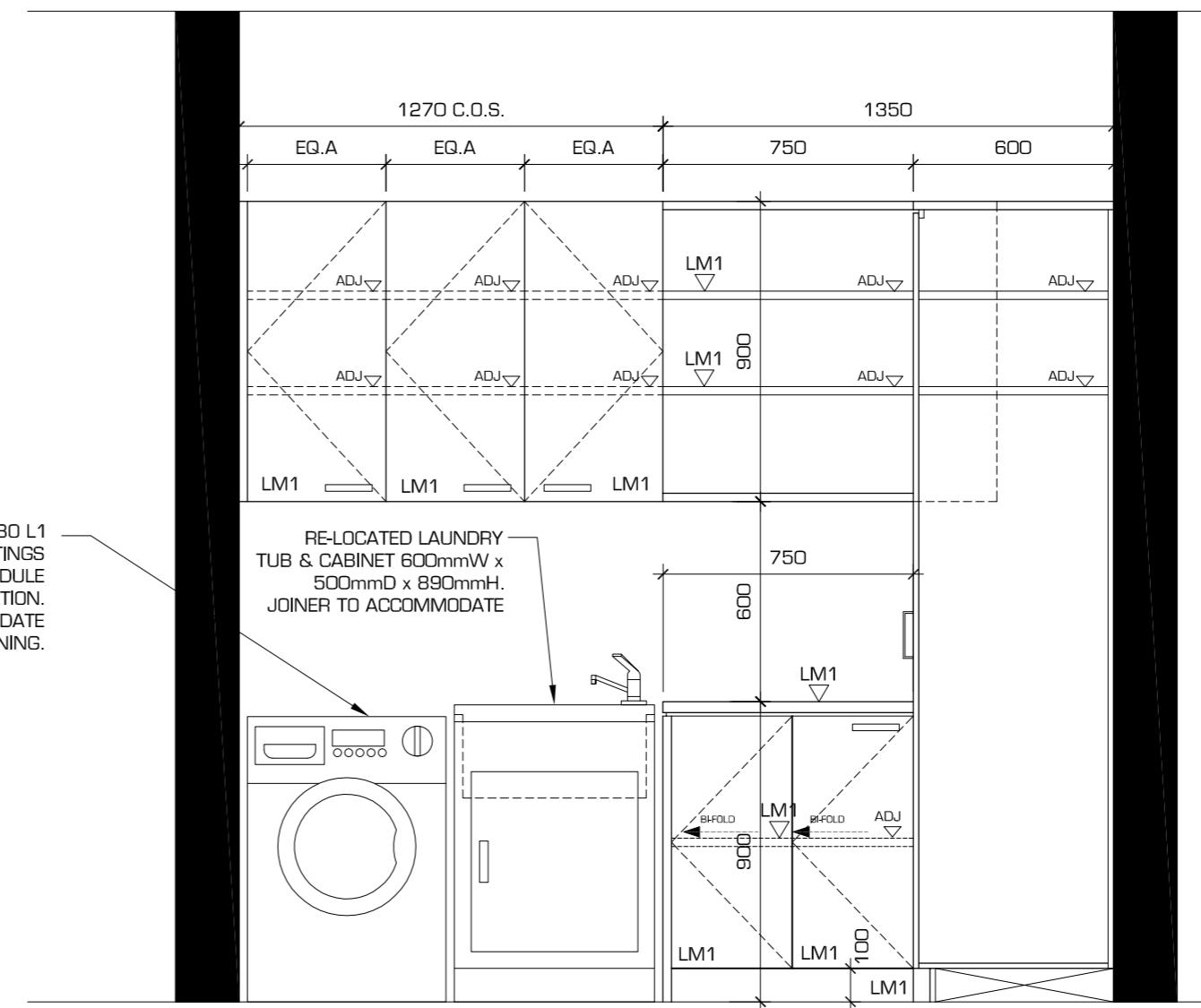
- LM1 LAMINEX COLOUR "PARCHMENT" FLINT FINISH
- LM4 LAMINEX COLOUR TO MATCH EXISTING CLIENT-SUPPLIED OFFICE FURNITURE (GREY)



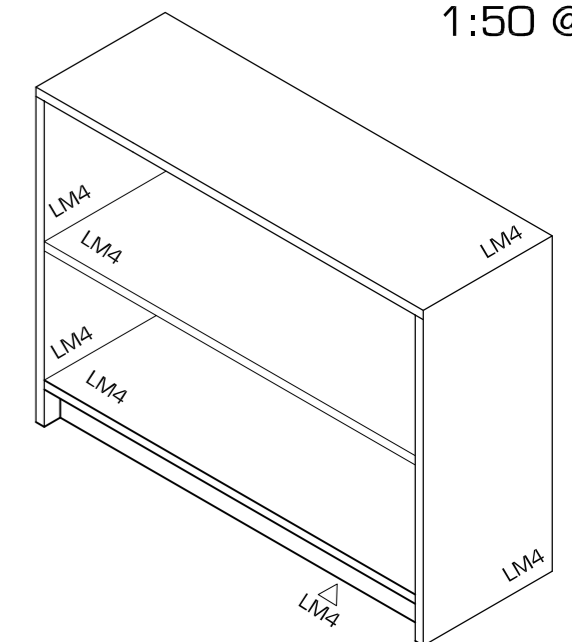
JO5 LOCATION
1:50 @ A2



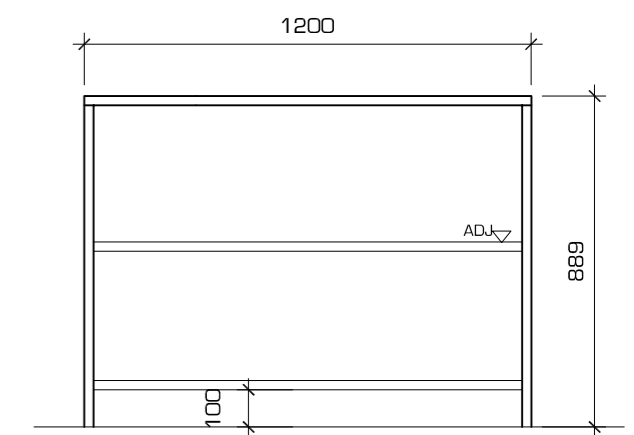
JO4 ISOMETRIC
1:20 @ A2



JO4 ELEVATION 2
1:20 @ A2



JO5 ISOMETRIC
1:20 @ A2



JO5 ELEVATION
1:20 @ A2

JO4 LAUNDRY JOINERY AND JO5 OFFICE JOINERY

REV.	DATE	DESCRIPTION	INITIAL
B	13 JUL 12	CC APPLICATION	JV
A	06 JUL 12	FOR CLIENT APPROVAL	JV

HDB
TownPlanning & Design
1st Floor, 44 Church Street, PO Box 40, MAITLAND NSW 2320
P: (02) 4933 6682 F: (02) 4933 6683
E: admin@hdb.com.au W: www.hdb.com.au
ABN 35 078 017 508

© COPYRIGHT 2012 - HUNTER DEVELOPMENT BROKERAGE PTY LTD
All rights reserved. Hunter Development Brokerage Pty Ltd advises that this document and all information contained therein is protected by copyright under the Australian Copyright Act 1968. Reproduction of this document in part or whole and/or use without the written permission from Hunter Development Brokerage Pty Ltd constitutes a breach of copyright. The document may only be used for the purposes for which it was commissioned and in accordance with the Terms of Engagement for the commission. Any reference to the document must include the document in its entirety and also include reference to Hunter Development Brokerage Pty Ltd.

JOINERY	
SCALE:	VARIABLES
DATUM:	AHD
DRAWN:	JV
PROJ. MAN.:	JV
CHECKED:	TP

CLIENT: BTA HOLDINGS
STEVE ALLEN/CRAIG BROWN-THOMAS
P.O. BOX 484
RUTHERFORD NSW 2320
PROJECT: MOON MOUNTAIN CELLAR DOOR
1733 BROKE ROAD, POKOLBIN
LOT 21 DP 543682

TITLE: JO4 AND JO5 ISOMETRIC AND ELEVATIONS		
SHEET NO: 4 OF 4	DATE: 13 JUL 2012	REV:
DRAWING NO: JD-03	REF: 12/036	B
DIR: G:\jobs\2012\12036 - BTA Holdings - JV - CC for Moon Mountain Cellar Door\Drawings		