

MARISSA BORELLI CASELLINI

active lifestyle consultant

REF.#/PID#: **XXXXXXXXXX**

DATE CREATED: **10/30/14**

DATE REVISED: _____ REV.#: _____

SEASON: **SPRING 2015**

FABRIC DELIVERY: _____

PRODUCTION DUE DATE: _____

- ☐ FOR COSTING
☒ FOR SAMPLING
☐ PRE-PRO/PENDING FIT APPROVAL
☐ FINAL DESIGN

FABRIC: **SPORTEK #SP-BAM26, 59/60" wide**

CONTENT: **52% bamboo charcoal 48% polyester bamboo**

CONTRAST FABRIC: **ECLAT #R1-00265, ??" wide**

CONTRAST CONTENT: _____

CARE LABEL: **CORE X WEAR CARE LABEL**

HANG TAGS: **CORE X WEAR HANGTAG**

GROUP NAME: **CORE X WEAR WOMENS**

STYLE DESCRIPTION **SEMI FITTED
RAGLAN MESH T**

SIZE RANGE: **S-M-L**

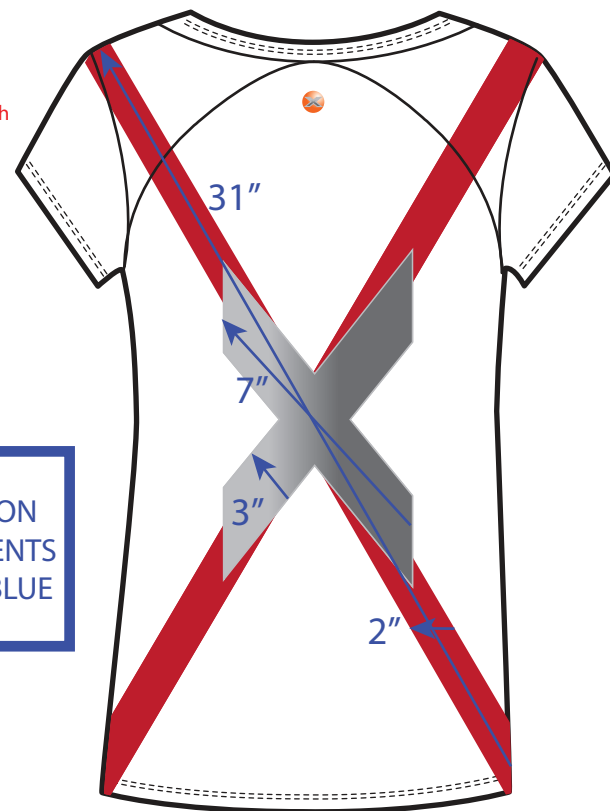
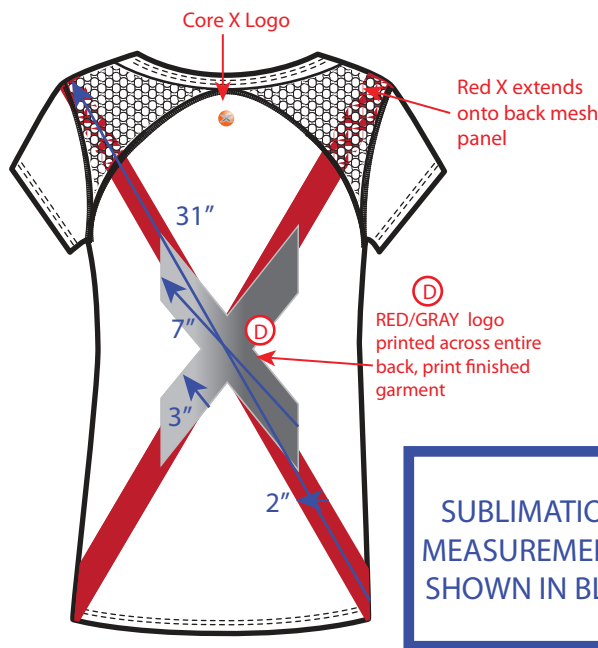
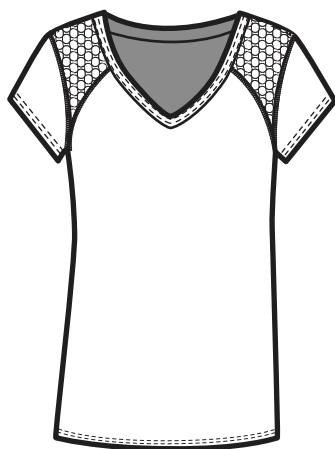
REF. STYLE#/SPEC: _____

WWW.COREXSYSTEM.COM

FRONT VIEW

BACK VIEW

SUBLIMATION DETAIL



SUBLIMATION
MEASUREMENTS
SHOWN IN BLUE

	(A) BODY	(B) STITCHING	(C) CONTRAST MESH	(D) X LOGO PRINT	QUANTITY	SAMPLE REQ DUE DATE
1	SKY BLUE	SKY BLUE	DARK GRAY	RED/GRAY	3	Y
2	MANDARINE	ORANGE	BLUE	RED/GRAY		
3	HOT RED	RED	DARK GRAY	RED/GRAY		
4	CHARCOAL	CHARCOAL	BLUE	RED/ GRAY		

CARE LABEL

HANG TAGS

FABRIC SWATCH

