

THE COST EFFECTIVE AND ENERGY EFFICIENT ALTERNATIVE TO THE FULL HYDRAULIC PRESS

OVERVIEW

The C-Series Air-Hydraulic Press is a more cost and energy efficient alternative to the Full Hydraulic Press Machine.

These C-Series Units come in four sizes ranging from 2.5 ton to 15 ton capacity. Standard features include a full length power stroke, 2.0" adjustable down-stop, and an anti-rotation ram guide. These heavy duty C-frame Units can be mounted on a floor stand or bench top and have an adjustable force and speed control.

OPERATION

As air enters the booster cylinder, oil is displaced in the hydraulic cylinder above. The displaced oil enters the ram cylinder and drives the ram down. Unlike other brands, pressure is maintained throughout the entire stroke. When the valve is de-energized, the ram retracts to its home position.

ADVANTAGES

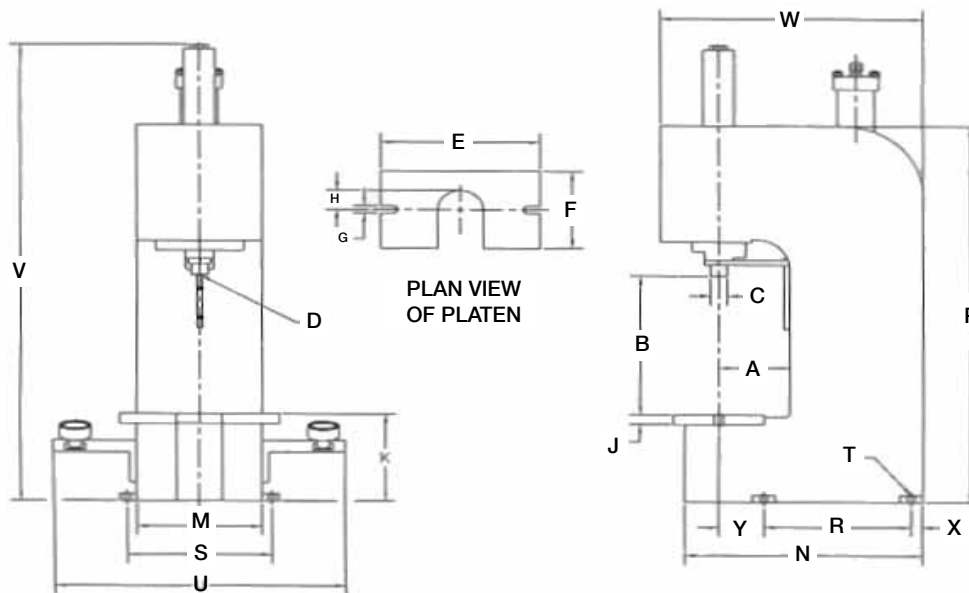
- Fewer moving parts
- Less maintenance, less down time
- Less noise
- Full length power stroke
- Less heat
- Cost less than electric powered hydraulic presses



SPECIFICATIONS

Description	2.5 Ton Press	5.5 Ton Press	10 Ton Press	15 Ton Press
Tons at 100 psi Air	2.5	5.5	10	15
Power Ratio (No. x air line psi = Approx. Force)	50	110	200	300
Max. Ram Stroke (adjustable 2" shorter)	5-3/16"	6"	4"	6"
Cubic in. of Pressurized Air Per Full Stroke Cycle	577	1562	1865	4521
Air Cyl. Port Pipe Size - 4 Way Control Valve	1/2"	3/4"	3/4"	1"
Return Force @ 100 psi	628	1080	1080	2003
Booster Cylinder				
Inside Diameter	6"	8"	8"	12"
Rod Diameter	2-1/8"	2-1/2"	1-7/8"	3-1/4"
Stroke	10-1/4"	15-5/8"	18-1/2"	20-3/16"
Ram Cylinder				
Inside Diameter	3"	4"	4"	5-3/4"
Top Rod Diameter	0.750"	1.000"	1.000"	1.250"
Bottom Rod Diameter	1.000"	1.500"	1.500"	2.750"
Net Weight	350 lbs.	500 lbs.	500 lbs.	800 lbs.

PRESS DIMENSIONS



DIM KEY	DESCRIPTION	C-250	C-300	C-400	C-500
A	Throat Depth	6.25	6.25	6.25	8.25
B	Daylight	12.00	14.43	14.43	14.00
C	Ram Diameter	1.000	1.500	1.500	2.750
D	Ram Mounting	5/8-11 x 1.25	5/8-11 x 1.25	5/8-11 x 1.25	1 1/4-12 x 1.88
E	Platen Width	12.50	14.00	14.00	18.00
F	Platen Depth	6.00	8.00	8.00	10.00
G	Platen Slot	0.62 x 1.25	0.75 x 1.50	0.75 x 1.50	1.25 x .88
H	Platen Radius	2.00	2.00	2.00	2.25
J	Platen Thickness	1.00	1.00	1.00	1.25
K	Platen To Floor	7.12	9.00	9.00	9.00
M	Frame Width	9.50	11.00	11.00	15.25
N	Frame Depth	18.00	21.00	21.00	28.00
P	Frame Height	32.12	39.00	39.00	40.00
R	Mounting Hole Depth	10.00	13.00	13.00	16.00
S	Mounting Hole Width	11.25	12.75	12.75	17.00
T	Mounting Hole	0.53	0.62	0.62	0.65
U	Overall Width	23.75*	25.25*	25.25*	29.50*
V	Overall Height	39.50*	46.50*	48.00*	52.00*
W	Overall Depth	20.00*	23.12*	23.12*	29.75*
X	Back Foot Mounting	1.00	1.00	1.00	1.25
Y	Front Foot Mounting	5.00	4.00	4.00	6.75

* Denotes Approximate Dimensions

C-SERIES MODELS

Our objective is to offer you a solution to your assembly and forming needs. If our standard features or available options do not meet your application requirements, please consult our factory to see about us offering an affordable solution to meet your design needs.

STANDARD OPTIONS

- No Hydraulic Power Unit or Electric Motor Needed
- Full Length Hydraulic Controlled Power Stroke
- 2.0" Adjustable Downstop (Stroke Adjustment)
- Anti-Rotation Ram Guide
- Flow Control (Speed Control)
- Heavy Duty Steel Welded C-Frame Construction
- Platen Cut-Out for Fixture and Part Accessibility

AVAILABLE OPTIONS

- Matching Floor Stands
- Two-Hand Non-Tie Down Control Packages
- Pressure / Dwell / Distance Return Options
- Jog Control Circuit
- Fault Circuit Control Package (E-FI)
- Increased Stroke Lengths
- Press Frame Modifications
- Cylinders sold separately

CUSTOM DESIGNED OPTIONS

- Light Curtains & Guarding Packages
- PLC Control Options
- 4-Post and 2-Post Designs
- Load Cell & Distance Monitoring Packages
- Selectable Modes of Operation
- Control Systems Designed for Future Expansion
- Custom Tooling and Fixture Packages

ISO 9001 REGISTERED (WITH DESIGN)

Air-Hydraulics is committed to delivering quality products on time to achieve customer satisfaction. Air-Hydraulics uses a process approach to achieve this policy in accordance with ISO 9001 and is committed to continually improve at this process.

www.airhydraulics.com
info@airhydraulics.com
 Phone: 1-800-837-4355

MODEL C-250**2.5 TONS**

@ 100 psi of Factory Supplied Air

5-3/16" Overall Stroke

with 2.0" Stroke Adjustment

12.00" Daylight Opening

6.25" Throat Depth

**MODEL C-300****5.5 TONS**

@ 100 psi of Factory Supplied Air

6.00" Overall Stroke

with 2.0" Stroke Adjustment

14.43" Daylight Opening

6.25" Throat Depth

**MODEL C-400****10 TONS**

@ 100 psi of Factory Supplied Air

4.00" Overall Stroke

with 2.0" Stroke Adjustment

14.43" Daylight Opening

6.25" Throat Depth

**MODEL C-500****15 TONS**

@ 100 psi of Factory Supplied Air

6.00" Overall Stroke

with 2.0" Stroke Adjustment

14.00" Daylight Opening

8.25" Throat Depth

