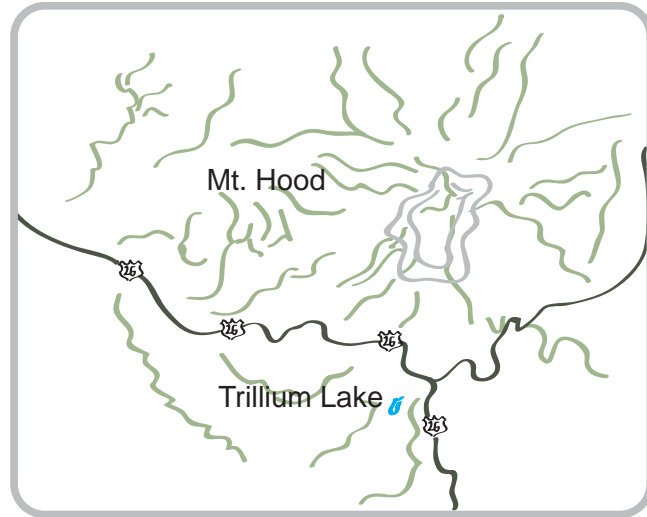
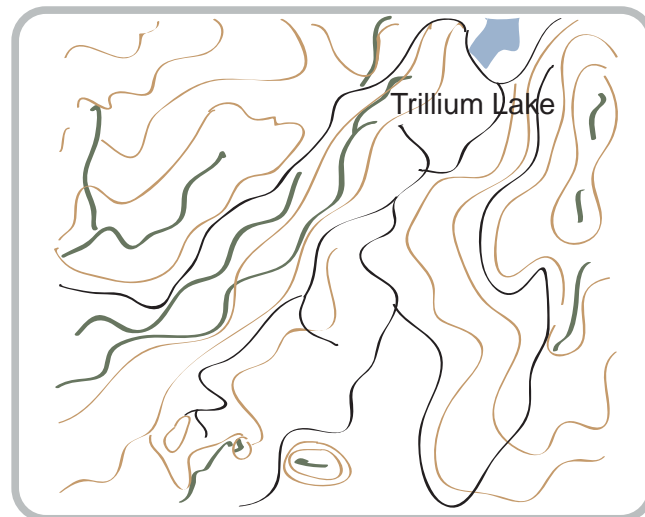


Forest Service current data collection

Currently Forest Service tree counting is not precise. Units are sampled and the data is applied to formulas to make a calculated estimate.



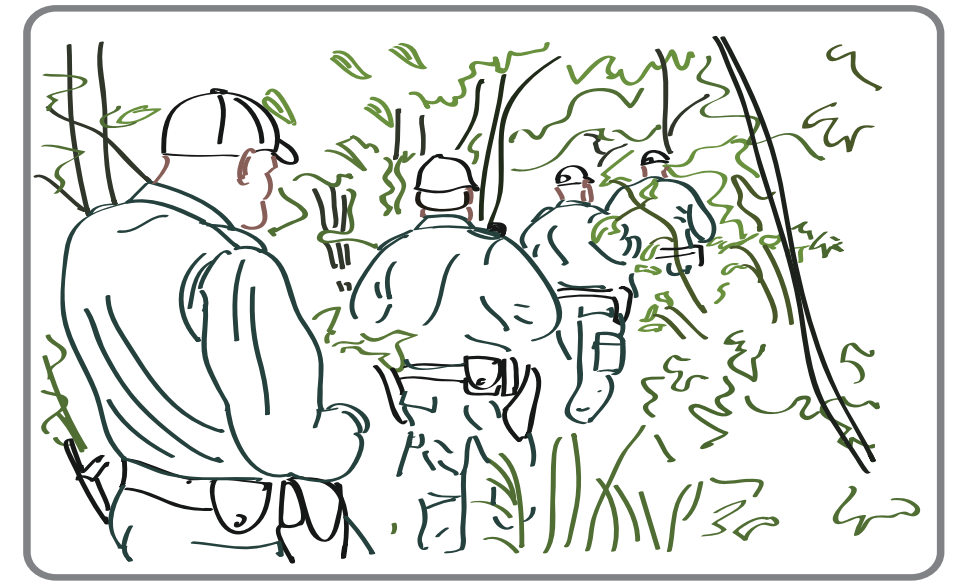
First you start with a forest



Then you select a "Unit" a smaller division of trees.



Data is collected



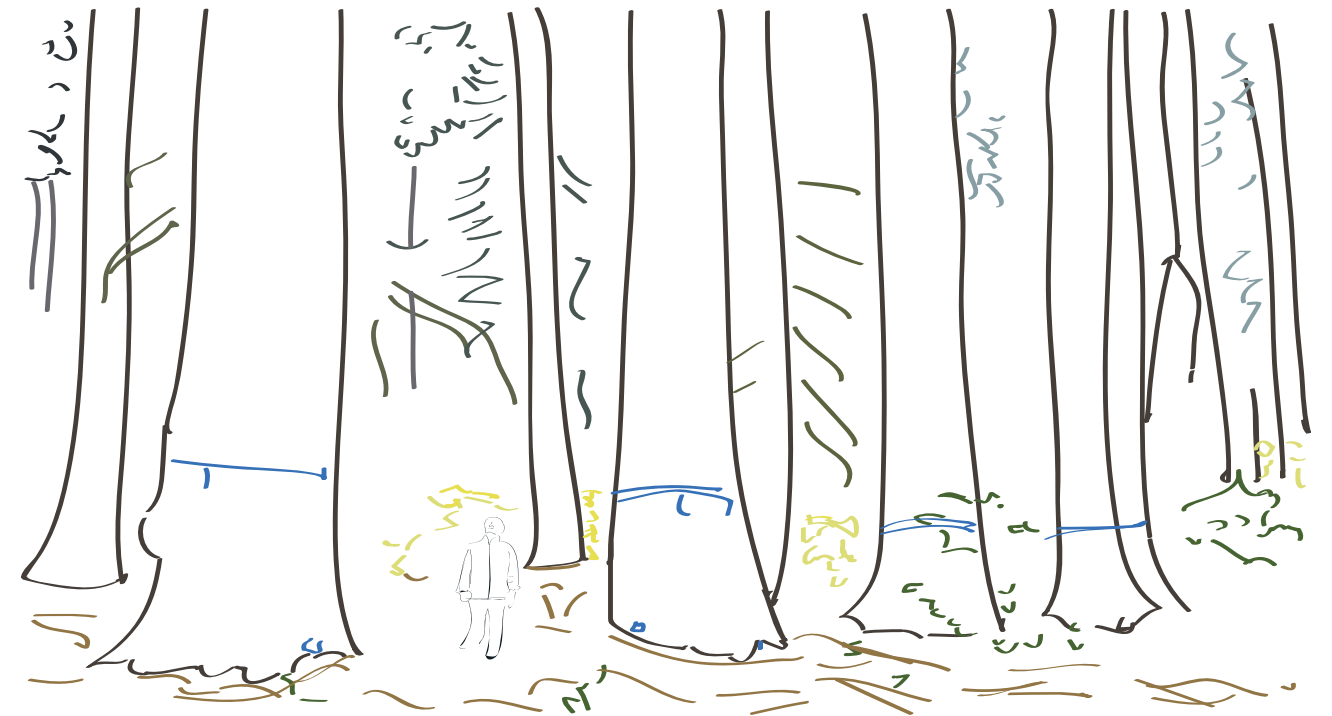
Units are survived and patrolled



Silviculturist take into account and measuring the size of that sample then applied to the forest for the tree count



Biologist and Botanist also collect data by the units of a forest.



What if there was a way to make the surviving, data collection, and patrolling efforts from these divisions of the forest service collaborate? What if there was a way to make these trips into the woods work together? Instead of several different trips in to a unit collecting different data, what if you could have several different trips collecting all of the sourced data, without a human foot print?