

GLOBAL WARMING IN AN UNEQUAL WORLD

Equity is a prerequisite for any global agreement, particularly when dealing with the pollution of a global common property resource such as the atmosphere. Discussions on global warming and climate change, however, threaten to put unequal burden on the nations of the world.

Europe EMU: 10%

Russian Federation: 6%

Rest of high income: 13%

Japan: 5%

Rest of Europe & Central Asia: 7%

United States: 22%

Rest of East Asia and Pacific: 4%

Rest of the world: 11%

Rest of South Asia: 1%

China: 16%

India: 5%

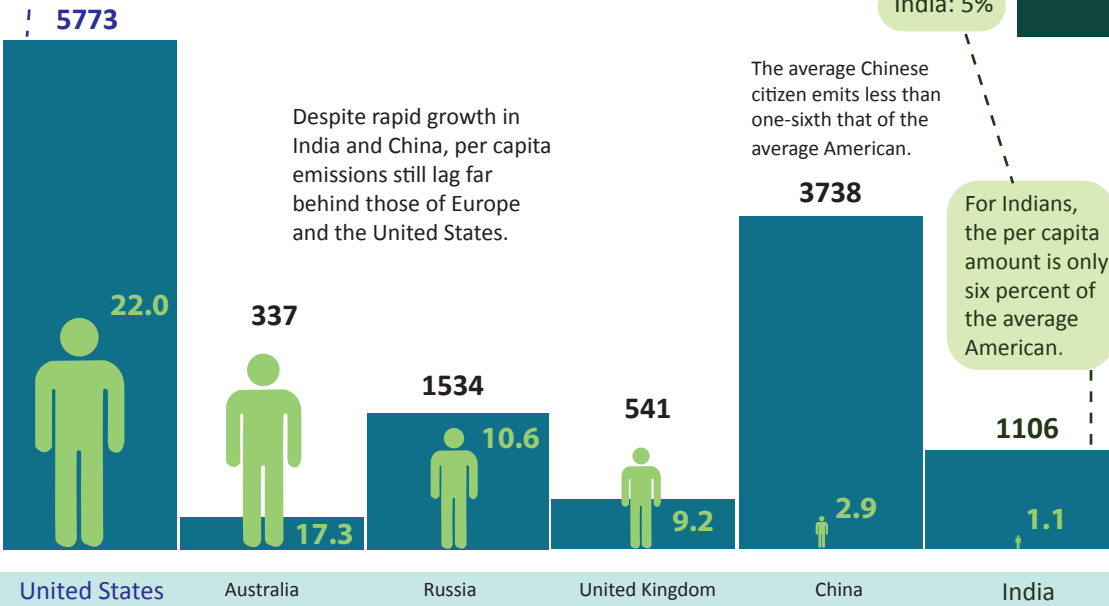
Americans represent 5% of the world's population but drive almost a third of its cars, which in turn account for nearly half the carbon dioxide pumped out of exhaust pipes into the atmosphere each year.



Despite rapid growth in India and China, per capita emissions still lag far behind those of Europe and the United States.

The average Chinese citizen emits less than one-sixth that of the average American.

For Indians, the per capita amount is only six percent of the average American.



Total CO2 emissions (tons) 2002



CO2 emissions (tons) per capita