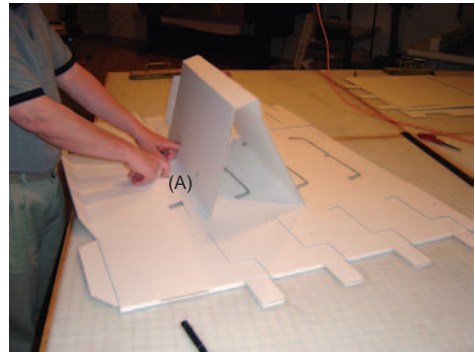
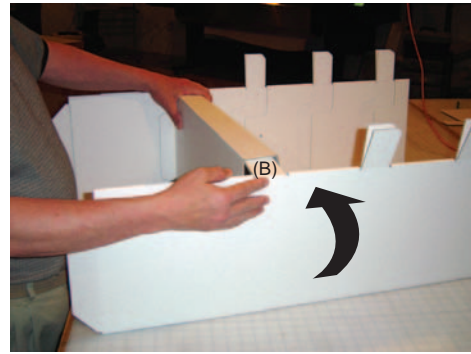


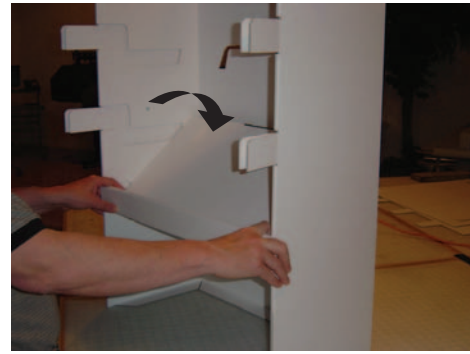
900025557 UNIVERSAL ENDCAP SET UP INSTRUCTIONS



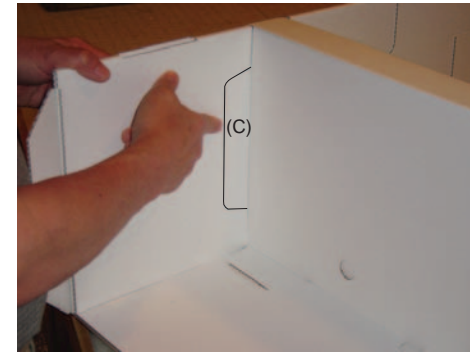
1. Lay Bottom Body assembly down on flat surface. Prebreak scores on Shelf and slot back turndown (A) of Shelf into bottom slot of Bottom Body as shown.



2. Fold up sides of Bottom Body assembly and fold in Minor Flaps (B).



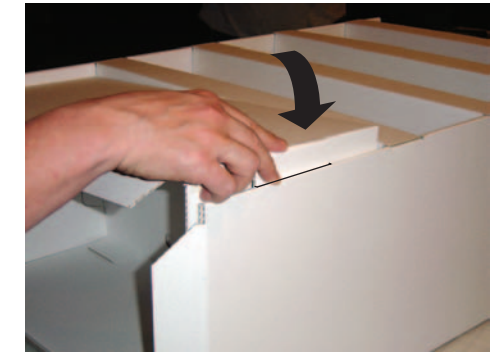
3. Starting at bottom, Fold Shelf up and over Minor Flaps and back into Bottom Body assembly.



4. Reach under Shelf and engage Side Turnback (C) of Shelf into opening in Sides. Repeat Steps 1-4 for remaining 3 shelves working your way up.



5. Locate Footer and break scores. (Position hole to top) and place over Bottom Body assembly beneath bottom shelf. Line up tab (D) to slot and insert down.



6. Fold Footer down and insert tab into slot on other side.



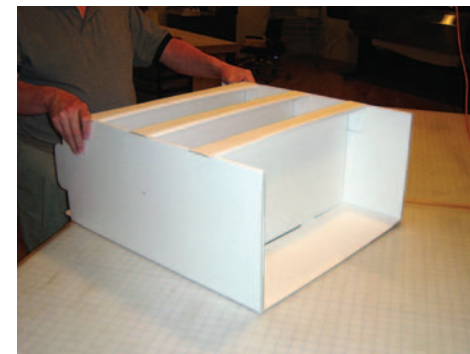
7. Locate Bottom Supports and slot together as shown.



8. Insert Supports up into bottom behind Footer.



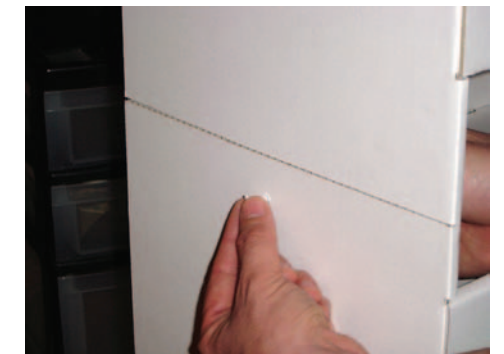
9. Finished Bottom Body Assembly.



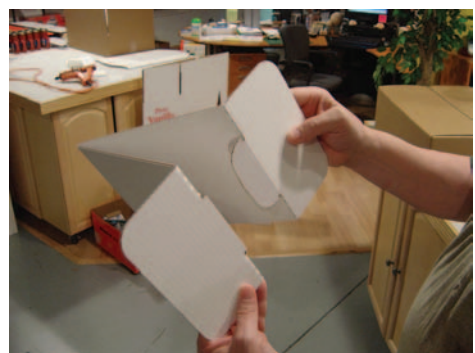
10. Locate Top Body Assembly. Repeat steps 1 through 4 to assemble and attach the three Shelves.



11. Attach the Top Body Assembly to the Bottom Body Assembly by hooking Center Tongue (E) of Top Body over the back of Bottom and aligning side Tabs (F) of Top into slots in sides of Bottom.



12. Secure Top Body to Bottom Body by inserting Viking Clips through holes and securing from other side.



13. Fold Dividers to appear as shown and tab to form.



14. Insert Divider into each Cell and position where needed. Top Cell does not need a Divider.



15. Spread Flanges of Divider outward against back of Tower.



16. Fold Riser to appear as shown and tab down into Top.

FINISHED UNIT.
ATTACH TWO UNITS TOGETHER USING VIKING CLIPS.

