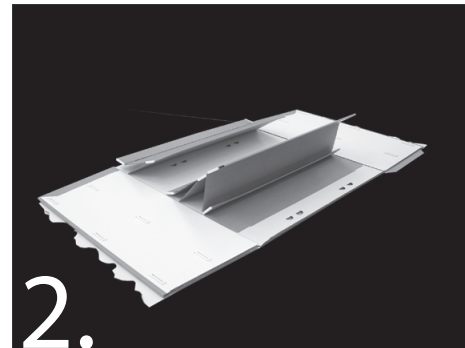


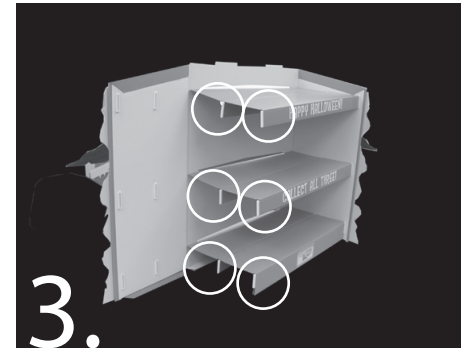
CODE #81044 LION KING HALLOWEEN INSTRUCTIONS



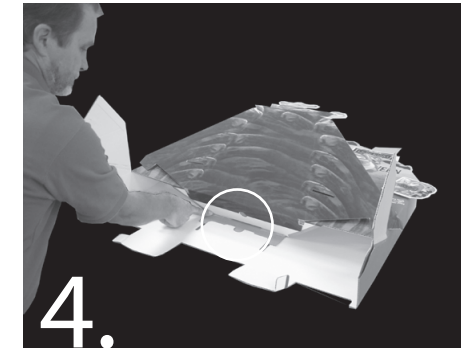
1. Arrange 4 #81045 Lion King Hutches as shown. Leave about 6+1/2" space between hutch backs.



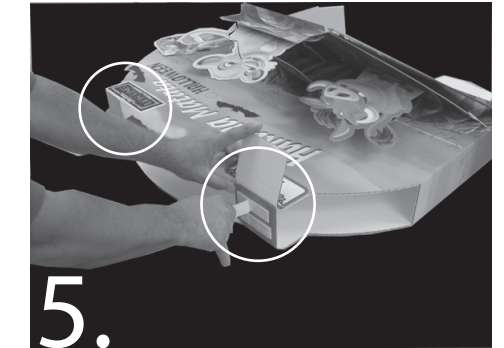
2. Locate Front and Back Hutch assemblies.



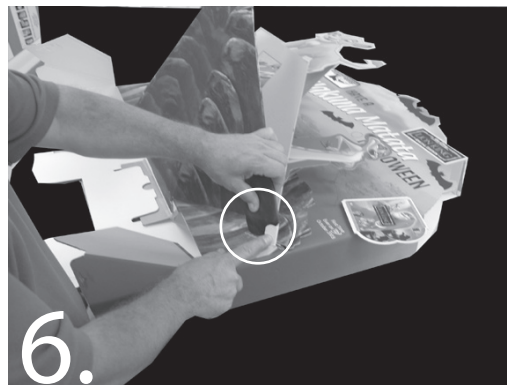
3. Fold in sides and engage CPC clips.



4. Locate Front and Back Top Sections. Square up and engage center flange as shown



5. Remove protective covering from Twinstik and fold and adhere top flanges where shown.



6. Insert Tabs on ends of Pride Rock into slots where shown.



8. Remove covering from Twinstik on flanges where shown. Fold back and adhere to hutch.



10. To form front lip of Pride Rock,-fold sides up; fold small flaps in; peel Twinstik and fold the front lip over small flaps and adhere to hold shape.



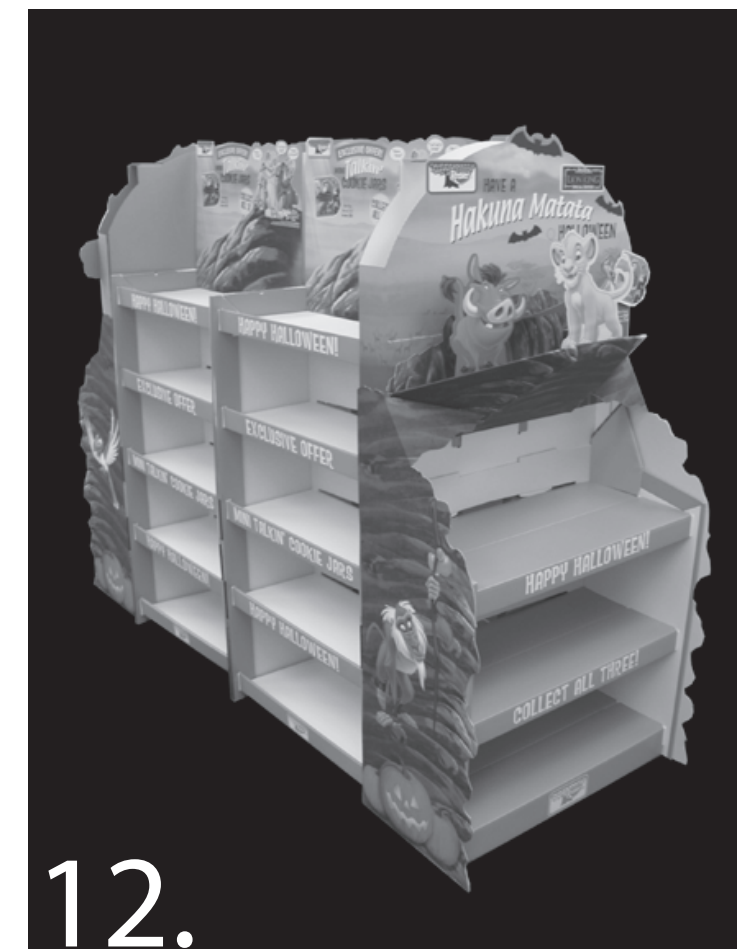
7. Tab Top Sections to hutches as shown. Open ears on tabs to secure.



9. Fold upper portion of Side Graphic panels up and adhere to side of Top Sections using Twinstik provided.



11. Fold in flange on Graphic Panel and tab into bottom of Pride Rock.



12. Finished Display.