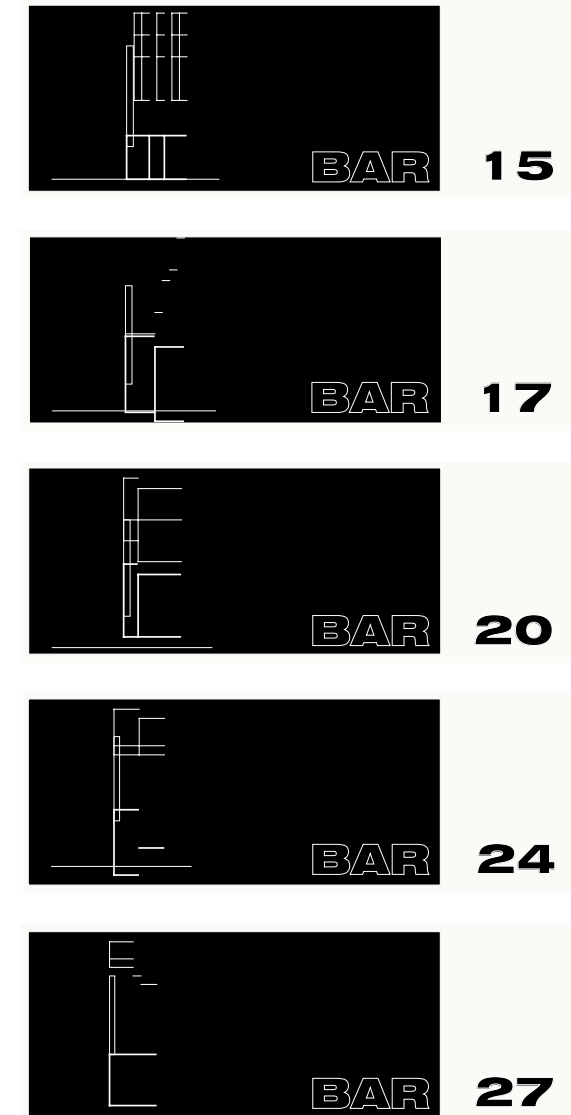
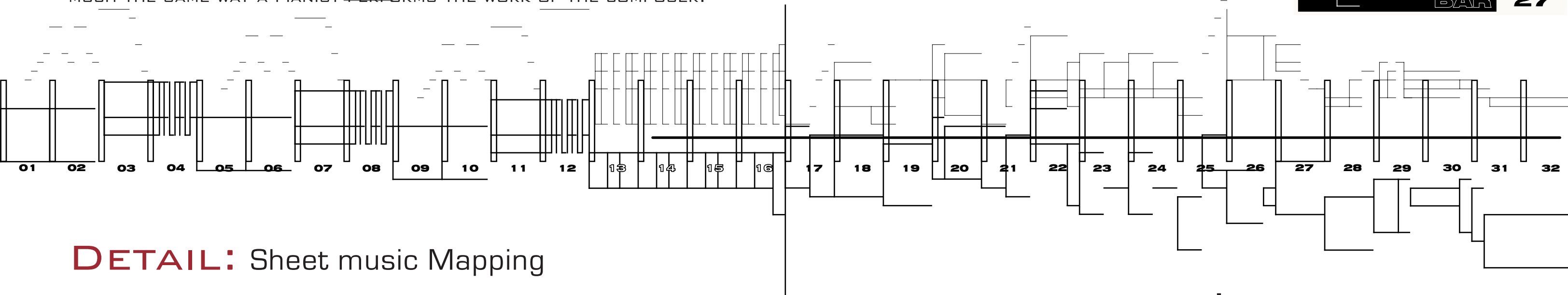


'ROUND MIDNIGHT

A HYBRID KINETIC ILLUMINARY



THE LEFT AND RIGHT HAND INTERVALS WERE ANALYZED AND ARE DOCUMENTED BELOW IN TERMS OF PITCH AND NOTE DURATION. THIS PIECE IS DERIVED FROM MEASURES 13-16 AND SERVES AS A SYSTEM, WHICH THE USER CAN MODIFY AND EXPLORE IN MUCH THE SAME WAY A PIANIST PERFORMS THE WORK OF THE COMPOSER.



DETAIL: Sheet music Mapping

DESIGN

PRODUCTION

LON.COULTER@GMAIL.COM

WWW.COROFLOT.COM/LONNIE

