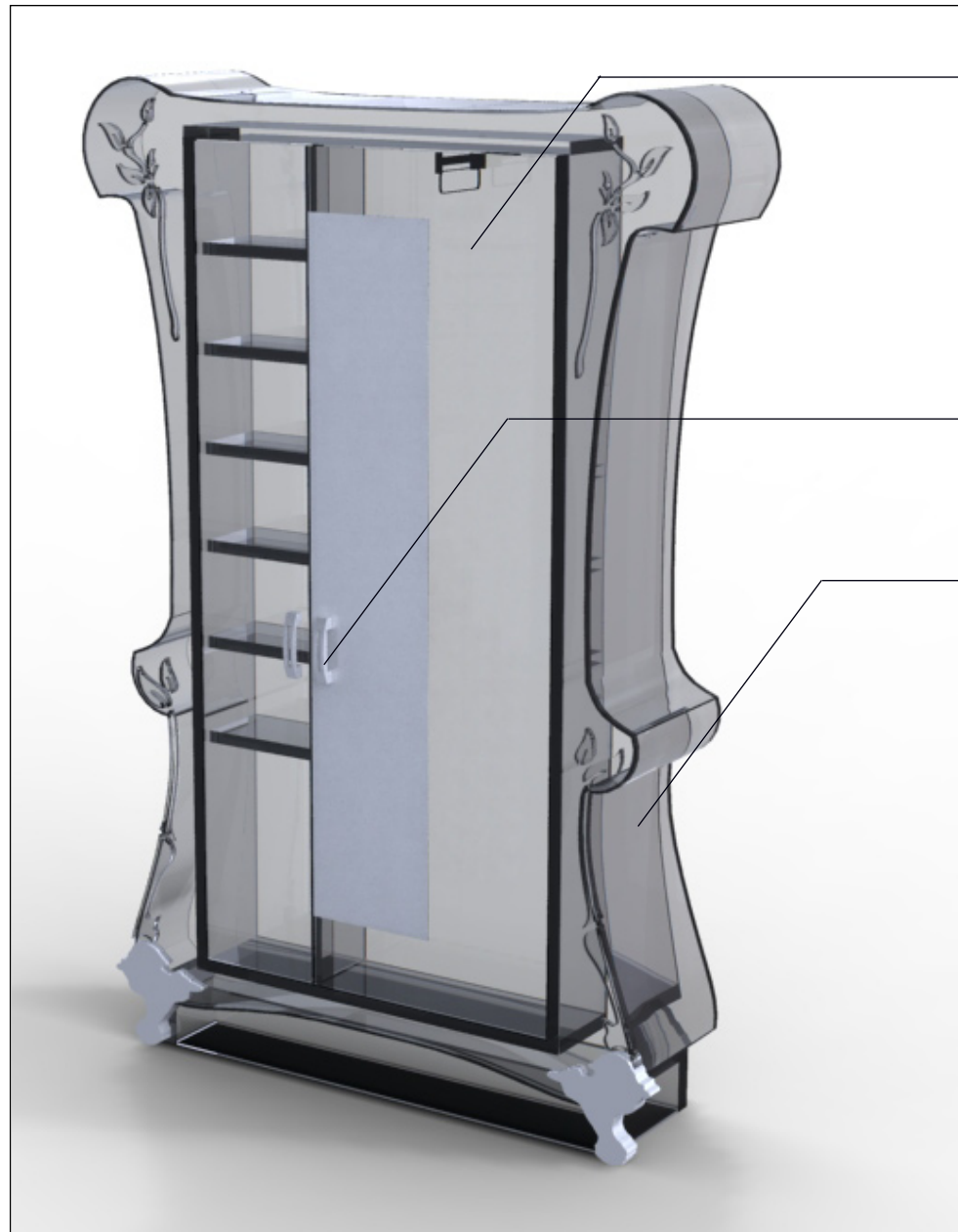


**THE KESSLER GROUP**  
COMPOSITE- NEW IDEAS FOR THE MANSION



22"X 68"X 13" COMPARTMENT  
EASILY ACCOMMODATES SEVERAL  
HANGING GARMENTS

POWDER-COATED DECORATIVE  
ELEMENTS FOR EDGE PROTECTION  
AND DETAIL- OPTIONAL

ONE OF MANY HARDWARE  
OPTIONS

ACRYLIC CONSTRUCTION-  
SCALABILITY: POSSIBLY FOR  
SUITES, WOOD FOR OTHER ROOMS

DURABLE HARDWOOD (SAPELE,  
WALNUT, CHERRY) FINISHED  
TO HIGH GLOSS; OPTIONAL  
TUNG OIL FINISH FOR GREATER  
REPAIRABILITY

2D RELIEF BALL-AND-CLAW  
WATERJET OPTION IN VARIOUS  
MATERIAL THICKNESSES



**ARMOIRE PIECE**

DESIGN

PRODUCTION

LON.COULTER@GMAIL.COM

WWW.COROFLOT.COM/LONNIE

