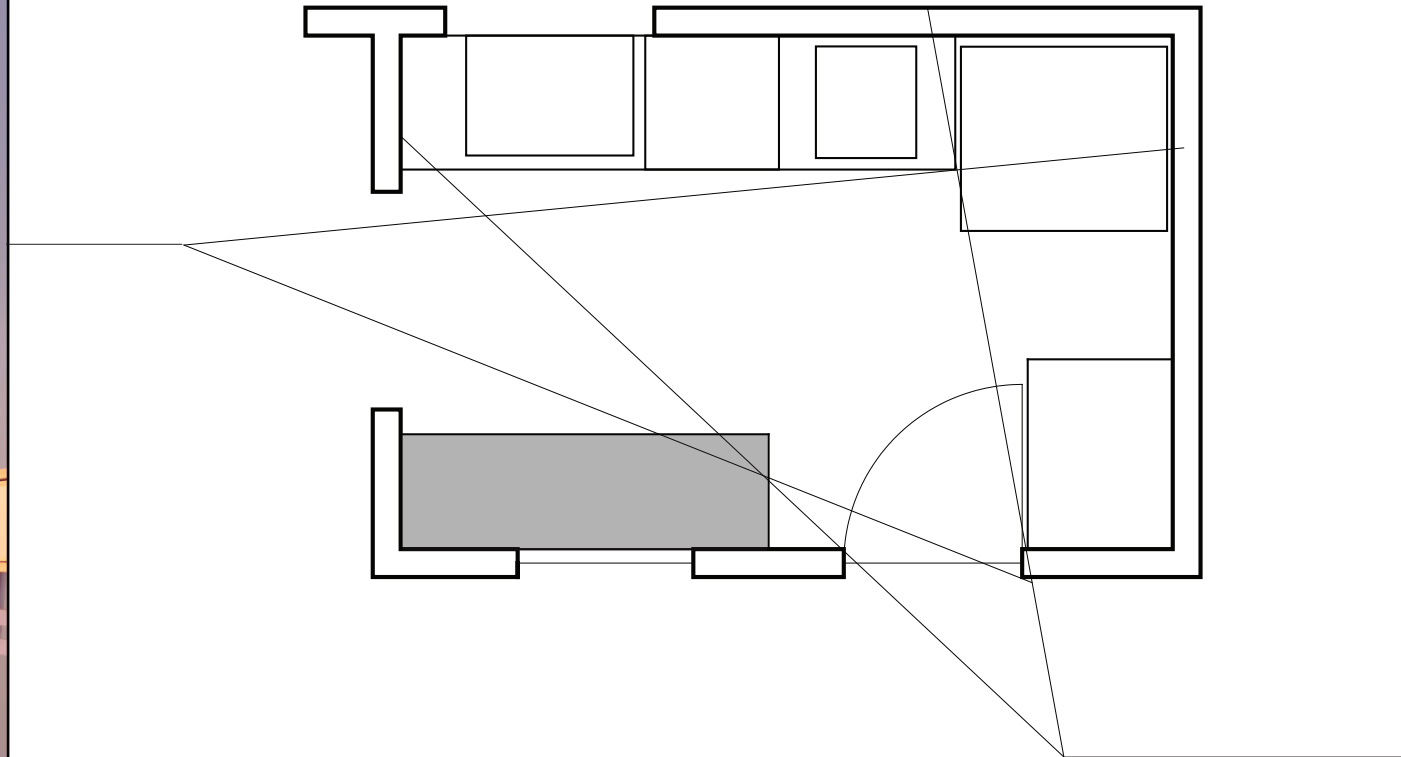


THE LIGHT BUFFET

A MOBILE KITCHEN WORKSTATION



THIS PIECE WAS DESIGNED TO COMBAT A COMMON OCCURNAGE IN SMALL KITCHENS: NO COUNTER SPACE! BY CREATING A BUFFET WITHOUT A LOT OF BULK ON THE BOTTOM, VALUABLE VOLUMETRIC SPACE IS MADE AVAILABLE FOR THE REST OF THE ROOM. ADDITIONALLY, IT GAINS THE CAPABILITY TO BECOME MOBILE, MAKING IT PERFECT FOR CHRISTMAS COOKIES, THAT OUTDOOR GRILLING SIDEKICK, OR TABLE SIDE DINNER SERVICE.



DESIGN

PRODUCTION

LON.COULTER@GMAIL.COM

WWW.COROFLOT.COM/LONNIE

LONNIE
COULTER