

# Team Sports

Provided by the NCAA

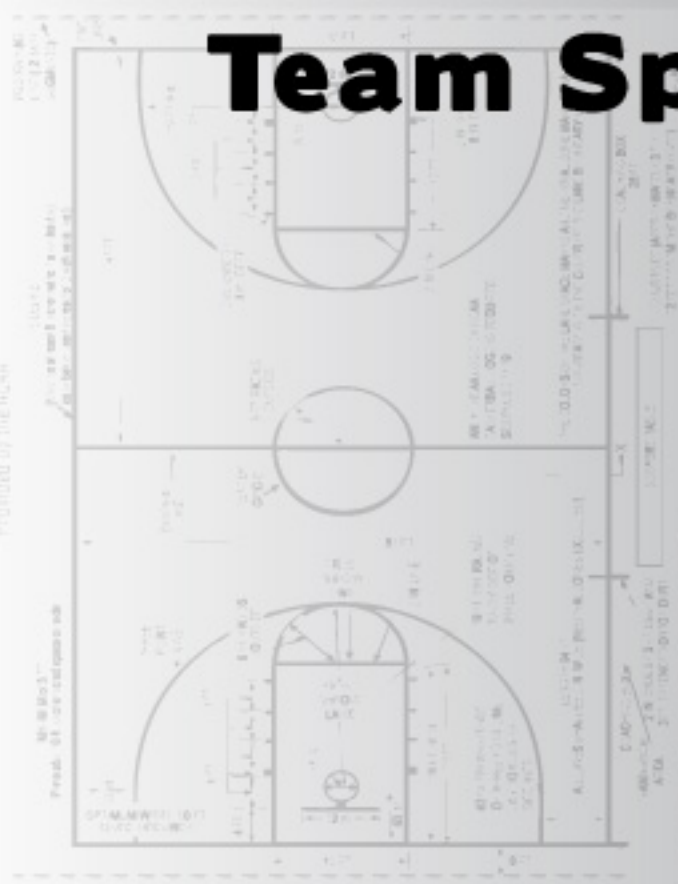
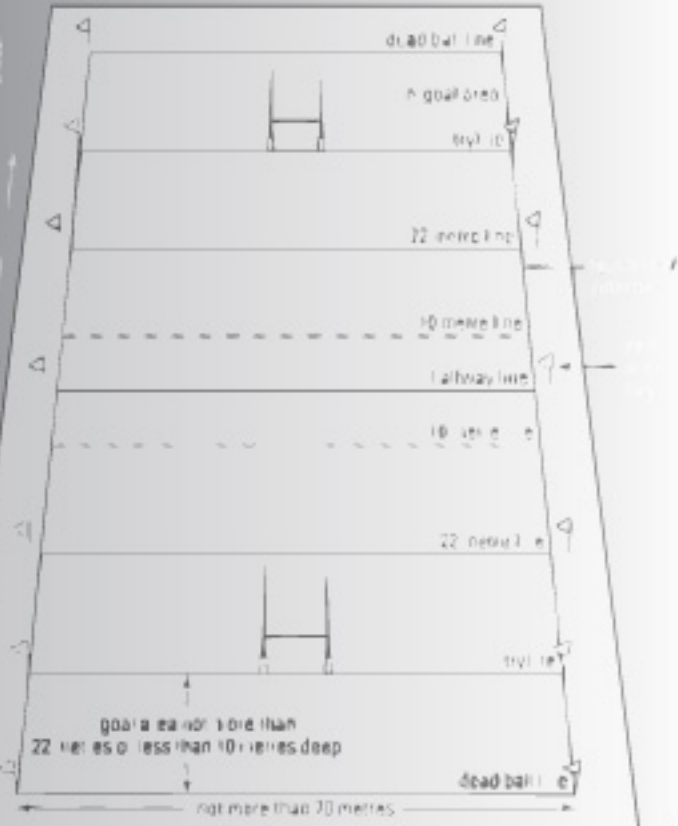
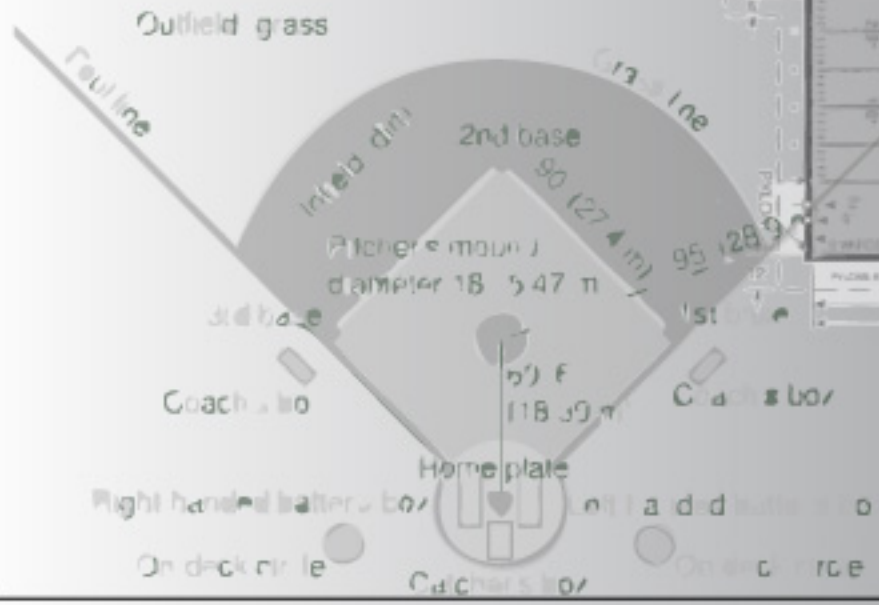
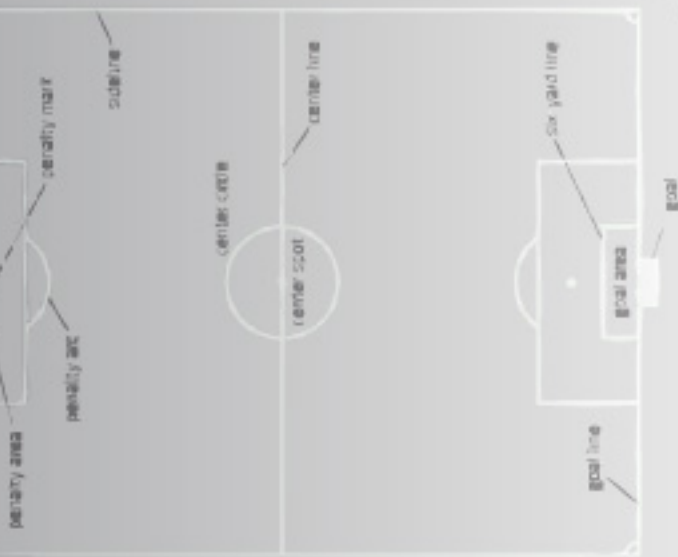
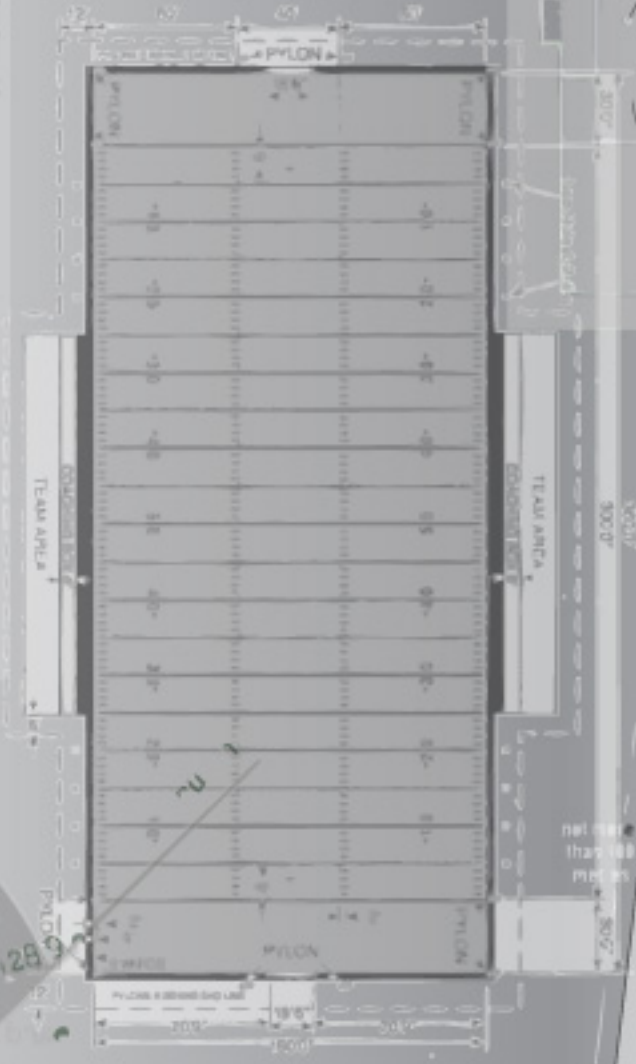


DIAGRAM OF FIELD



**Reversible  
Basketball Uniform**

**Features:**

- 1" - 3 stripe neck and sleeve trim
- 4" Mesh side insert on jersey
- Rounded tail
- Mesh side panels-short
- Removable care labels
- Double thickness body

**Fabric:**

- 100% microfiber cationic color-fast polyester with moisture management
- 100% polyester 100 denier micro mesh side inserts



## Reversible Basketball Uniform

### Features:

1" - 3 stripe neck and sleeve trim

4" Mesh side insert on jersey

Rounded tail

Mesh side panels-short

Removable care labels

Double thickness body

### Fabric:

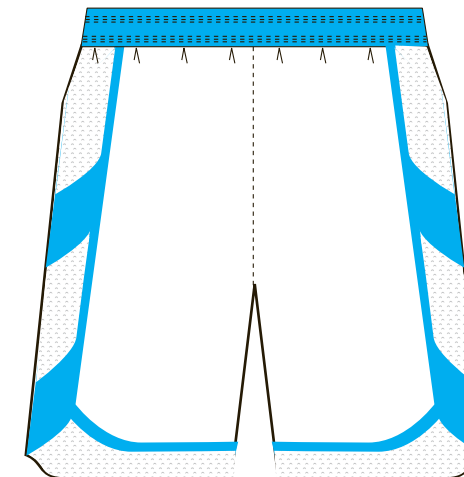
100% microfiber cationic color-fast polyester with moisture management

100% polyester 100 denier micro mesh side inserts

FRONT



FRONT



## Basketball Uniform

### Features:

- ::: Jersey: mesh side panels
- ::: Printable area on chest and back
- ::: Short: Mesh panel in high heat areas
- ::: Change style lines from traditional B-Ball short

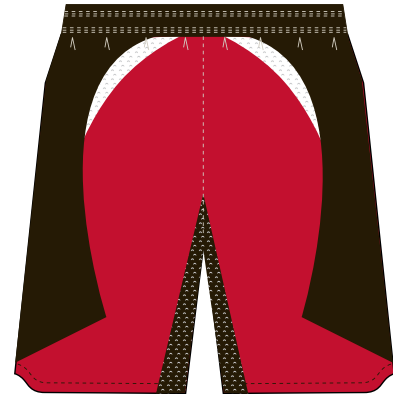
### Fabric:

- ::: Non bleed poly fabric
- ::: Mesh



**A**

Rounded tail



**B**

FRONT



Removable Care and Sizing Label

FRONT



Rounded tail



**“Tight-Fit” Tracksuits**

Men’s and Women’s

**Style Description**

Streamlined tight-fitting Tracksuit. One-piece Tank style top combined with option of short or longer bottoms available in all team colors, in combination with white Accent Panels.

**Construction (Tops and Bottoms)**

- Polyester / Spandex Blend for durability, stretch-compression, breathability, and aerodynamics
- Flat-lock stitch on side panel and waist to promote next to skin comfort
- One piece side panels
- Women’s and Men’s Individual Cuts
- Hidden zipper on back with Semi automatic slider

**Options**

- Separate back panel for screenability without seam, or for sublimated logos

**One-Piece Tracksuit Short bottoms**



**One-Piece Tracksuit Long bottoms**



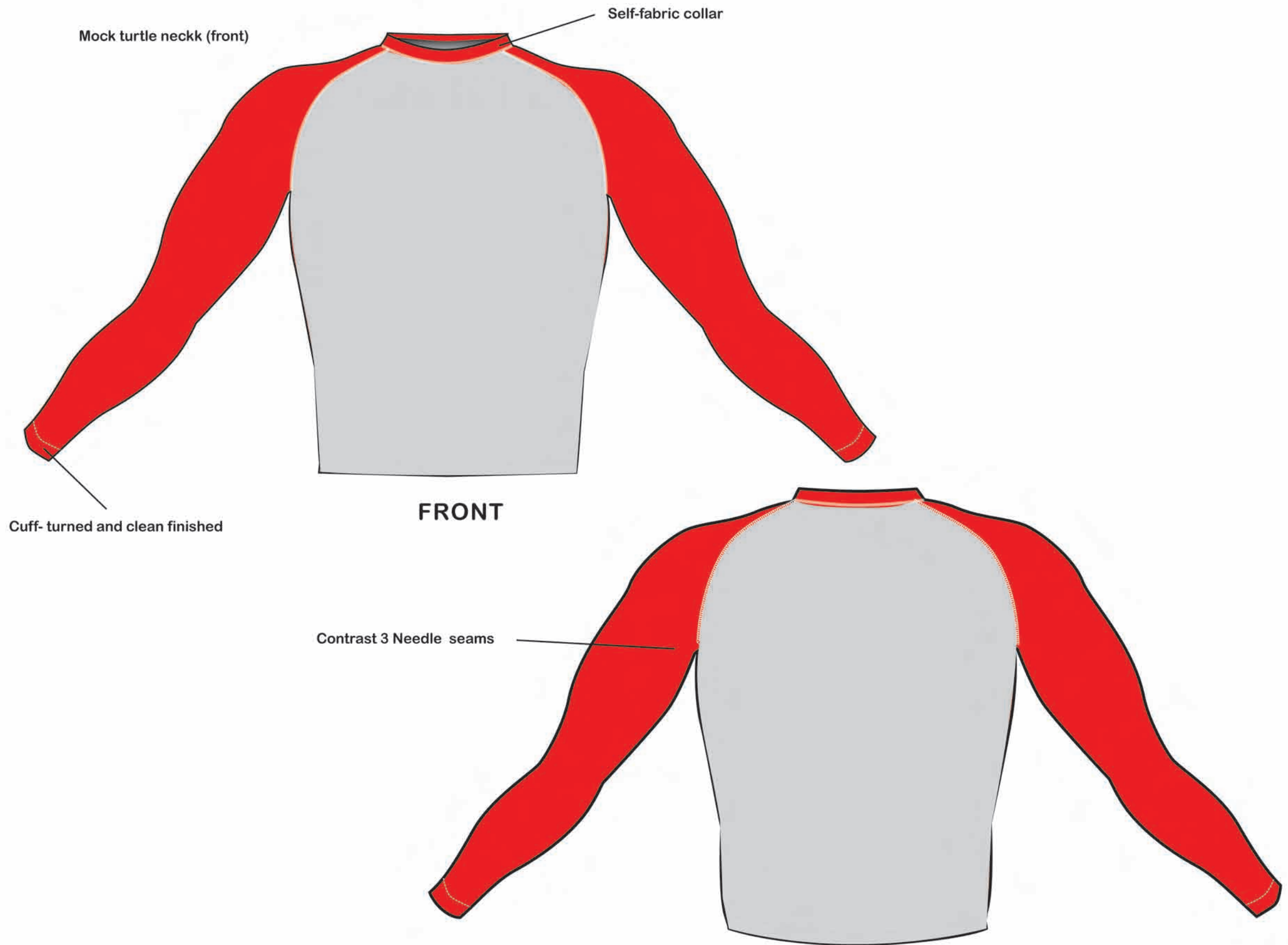
**OPTIONAL:**  
 Back panel for sublimation or screen



## Baseball Tight-Fit

### Construction:

1. Polyester/Spandex
2. Inherent moisture management
3. Contrast 3 Needle seams with fluff thread for next to skin comfort
4. Heat seal logos
5. Heat seal content/size tags
6. Ergonomic boomerang cut sleeves
7. Self-fabric collar
8. Cuff- turned and clean finished



# Team Kits

