



Contour Trash Receptacle

The LNI Contour Trash Receptacle is perfect for municipalities, office complexes, universities and apartment buildings. The all metal construction fully fabricated in Hawthorne, CA and is BUY AMERICA compliant.

Features:

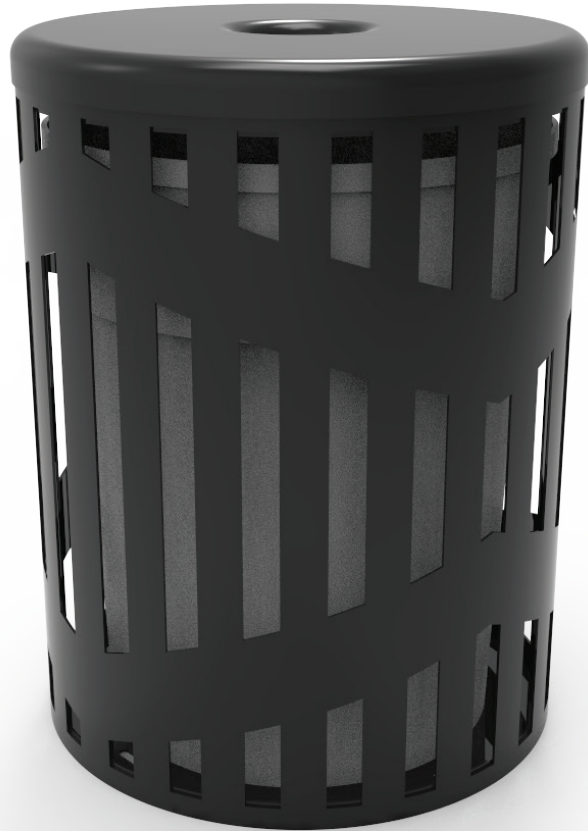
- 32 Gallon Capacity
- 18 Gauge Laser Cut Body
- 1/8" Steel Structure
- 3/16" Steel Base
- Standard round lid (pictured)

Finish:

- Powder Coat (3-5mil)
- *Specify RAL #*

Mounting:

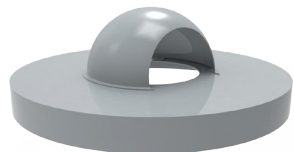
- Surface mounted



Lid Options



Hinged
with locking mechanism



Dome
Tethered or removable



Rain Cover
Ash receptacle optional

