

**TEAM 2**

Civil Engineer:

Structural Engineer:

City of Apple Valley

**AVFS 1 Remodel**

**Main Level Life Safety Plan**

Project Number 131218

Date 12-18-13

Drawn By Team 2

Checked By P. Strothers

**A010**

Scale 1/8" = 1'-0"

Construction Type:  
Non Combustible 2A

Sprinkler Protection:  
NFPA Type 13

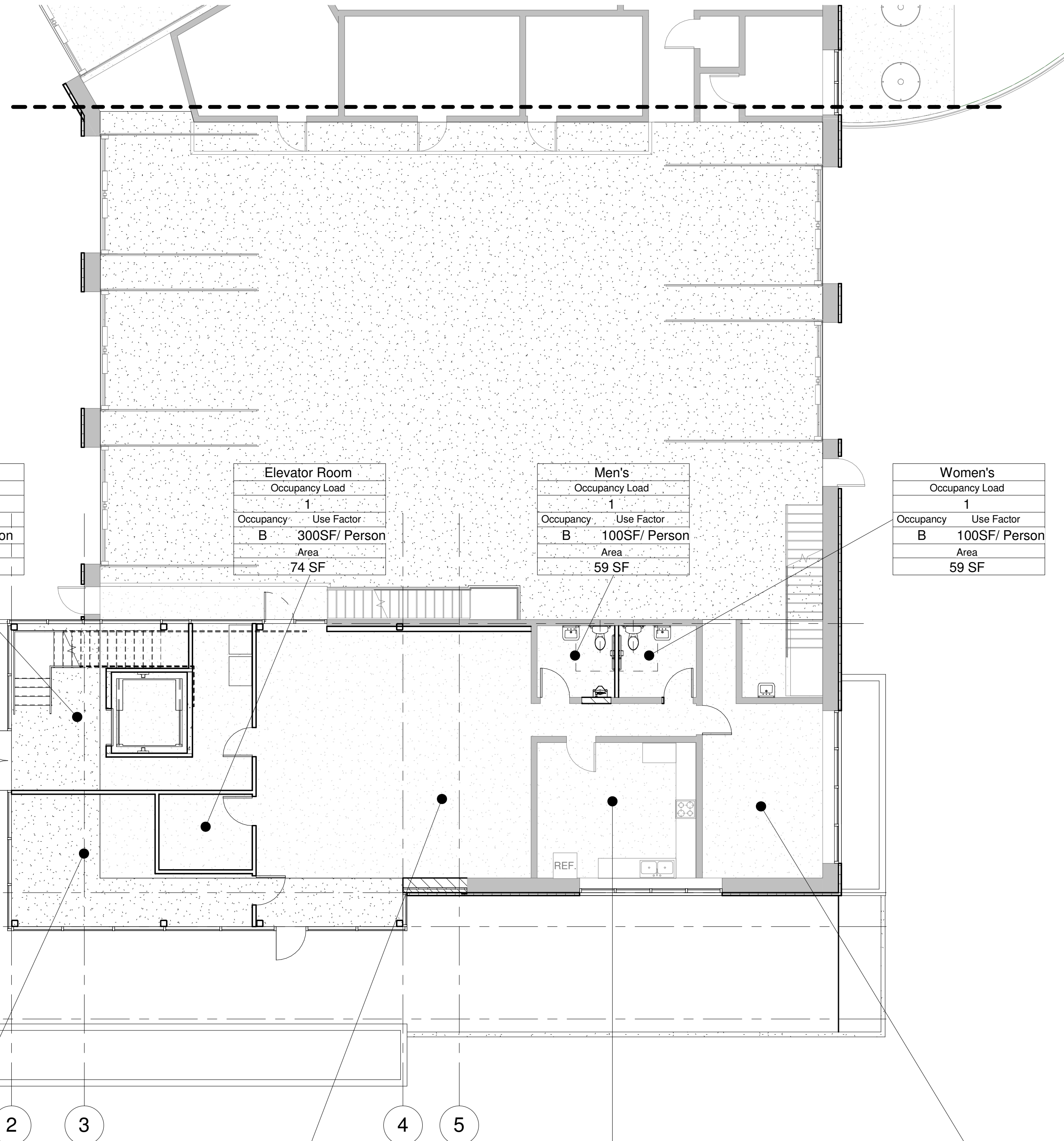
Mixed Use / Unseparated Occupancy  
- Most restrictive: A3  
Allowable Area: 15,500 SF

Max. Egress Travel Distance:  
A: 250 Feet  
B: 300 Feet  
S2: 400 Feet

Max. Common Path of Egress:  
75 Feet

Min. Egress Width:  
123 Occ. X .15" = 18.45"

Egress Width Provided:  
180"



Lobby	
Occupancy Load	
46	
Occupancy	Use Factor
B	5 SF/ Person
Area	
228 SF	

Elevator Room	
Occupancy Load	
1	
Occupancy	Use Factor
B	300SF/ Person
Area	
74 SF	

Men's	
Occupancy Load	
1	
Occupancy	Use Factor
B	100SF/ Person
Area	
59 SF	

Women's	
Occupancy Load	
1	
Occupancy	Use Factor
B	100SF/ Person
Area	
59 SF	

Plan Review	
Occupancy Load	
17	
Occupancy	Use Factor
B	15 SF/ Person
Area	
241 SF	

Meeting/Training	
Occupancy Load	
53	
Occupancy	Use Factor
A3	15 SF/ Person
Area	
790 SF	

Kitchen	
Occupancy Load	
3	
Occupancy	Use Factor
B	100SF/ Person
Area	
228 SF	

Mechanical	
Occupancy Load	
1	
Occupancy	Use Factor
B	300SF/ Person
Area	
222 SF	