

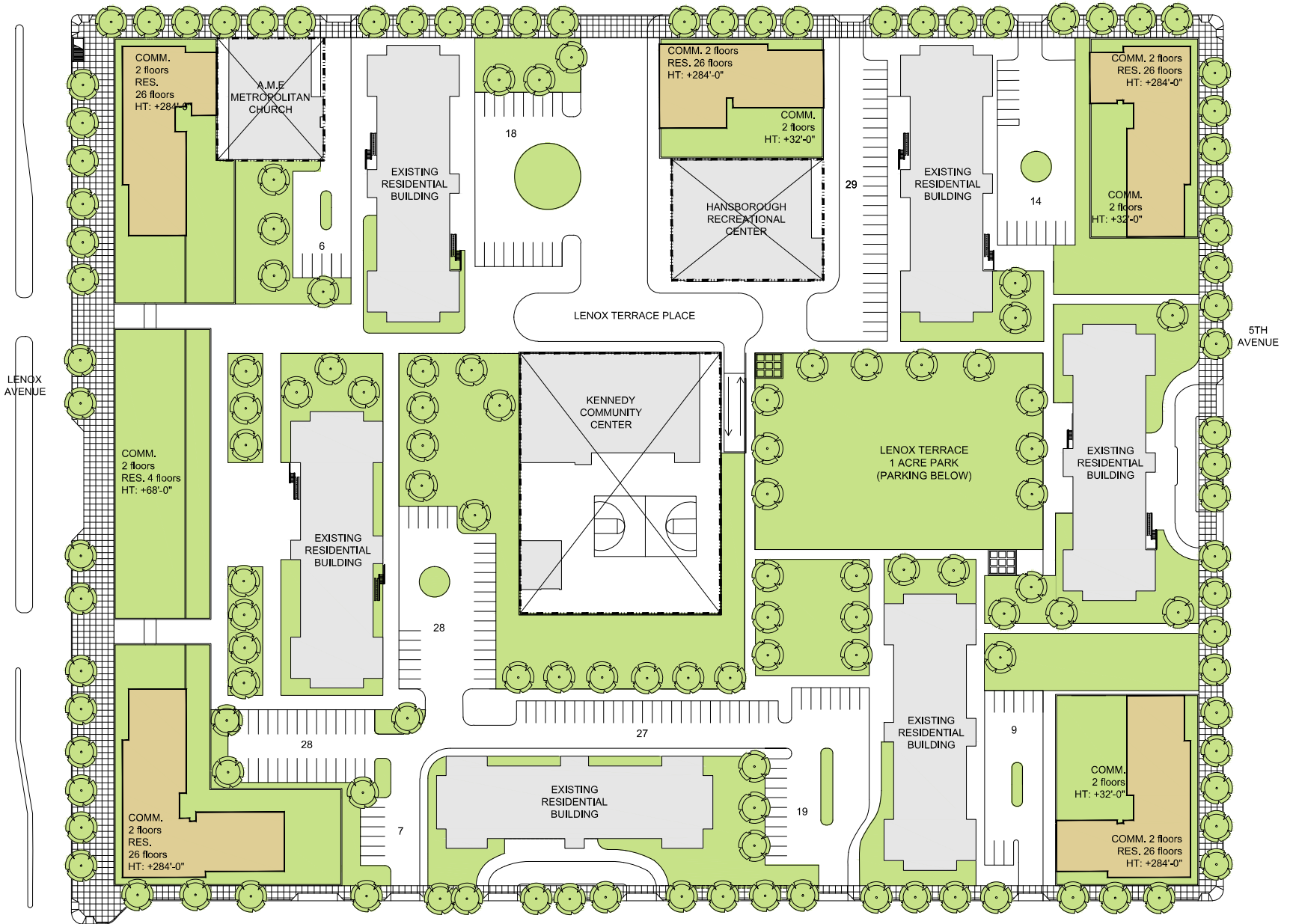
LENOX TERRACE MASTERPLAN

Location: Harlem New York City
Size: 1,259,635 SF & 1,370 Units (Proposed)
Involvement: Project Designer - Exterior
Duration: Masterplanning

The Lenox Terrace Redevelopment Plan consists of several development strategies for a fourteen-acre mixed-use site in Harlem. Objectives include the creation of 338,000 SF of new retail and community facilities, as well as an improved street/block plan to reinforce the continuity of an urban street wall at the perimeter to enhance the pedestrian experience. The plan, which provides for over four acres of open park space, maintains existing housing and provides an additional 1,370 dwelling units. It also features healthcare facilities and the Kennedy Recreational Center, which will include a multi-purpose gymnasium, an auditorium, a senior center, and classroom space. Proposed parking for over 550 cars will be relocated below-grade to maximize open space and accommodate the new park.



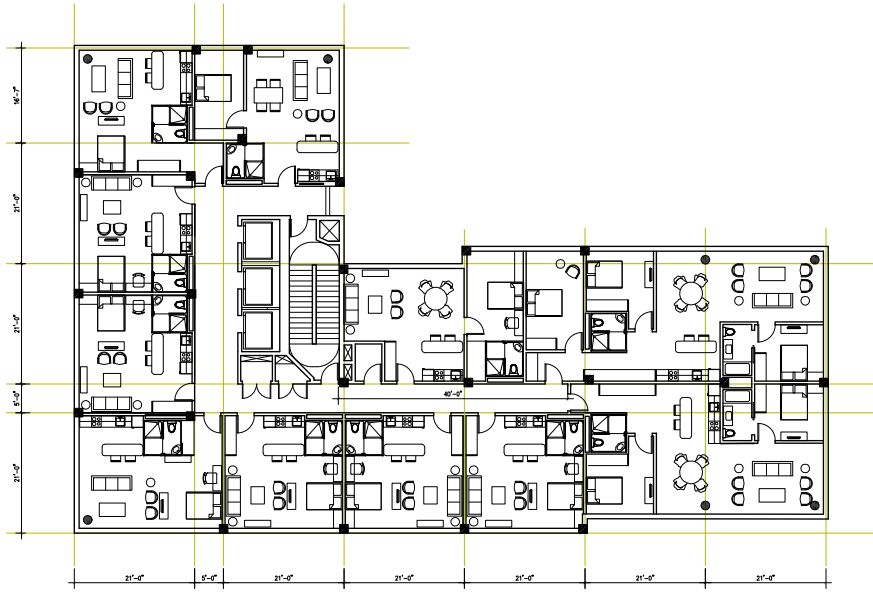
W 135TH ST



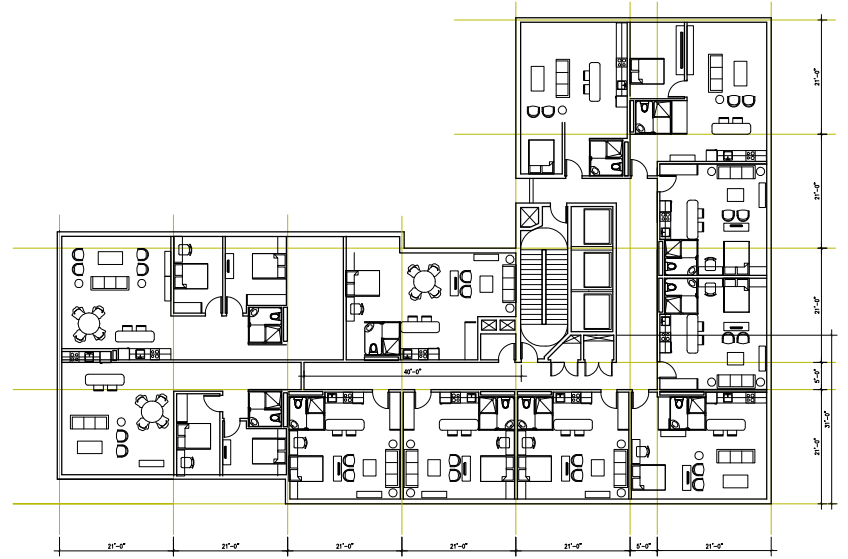
W 132ND ST



Lenox Terrace

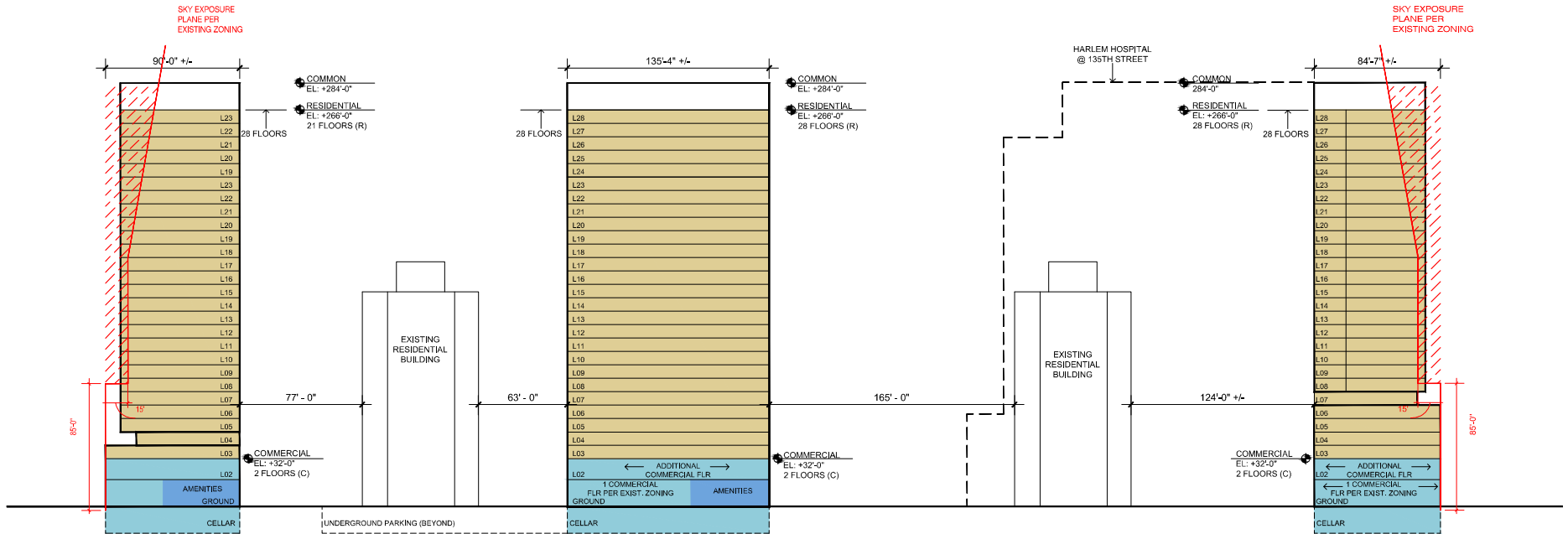


Tower A



Tower C

1 2 3 4 5 6 7 8 9 10



**NORTHEAST TOWER
FIFTH AVE**

COMMERCIAL: 26,700 sqft
CELLAR: 9,700 sqft
AMENITY: 5,000 sqft

NORTH TOWER

COMMERCIAL: 24,000 sqft
CELLAR: 12,000 sqft
AMENITY: 1,250 sqft

**NORTHWEST TOWER
LENOX AVE**





1 2 3 4 5 6 7 8 9 10

Lenox Terrace





1 2 3 4 5 6 7 8 9 10

Lenox Terrace