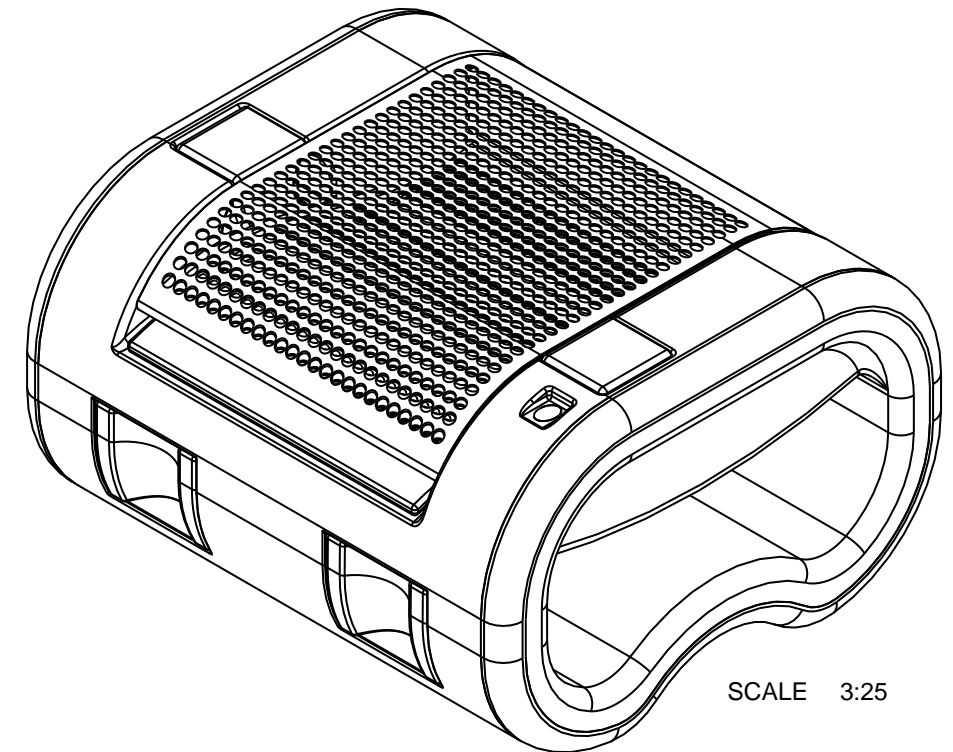
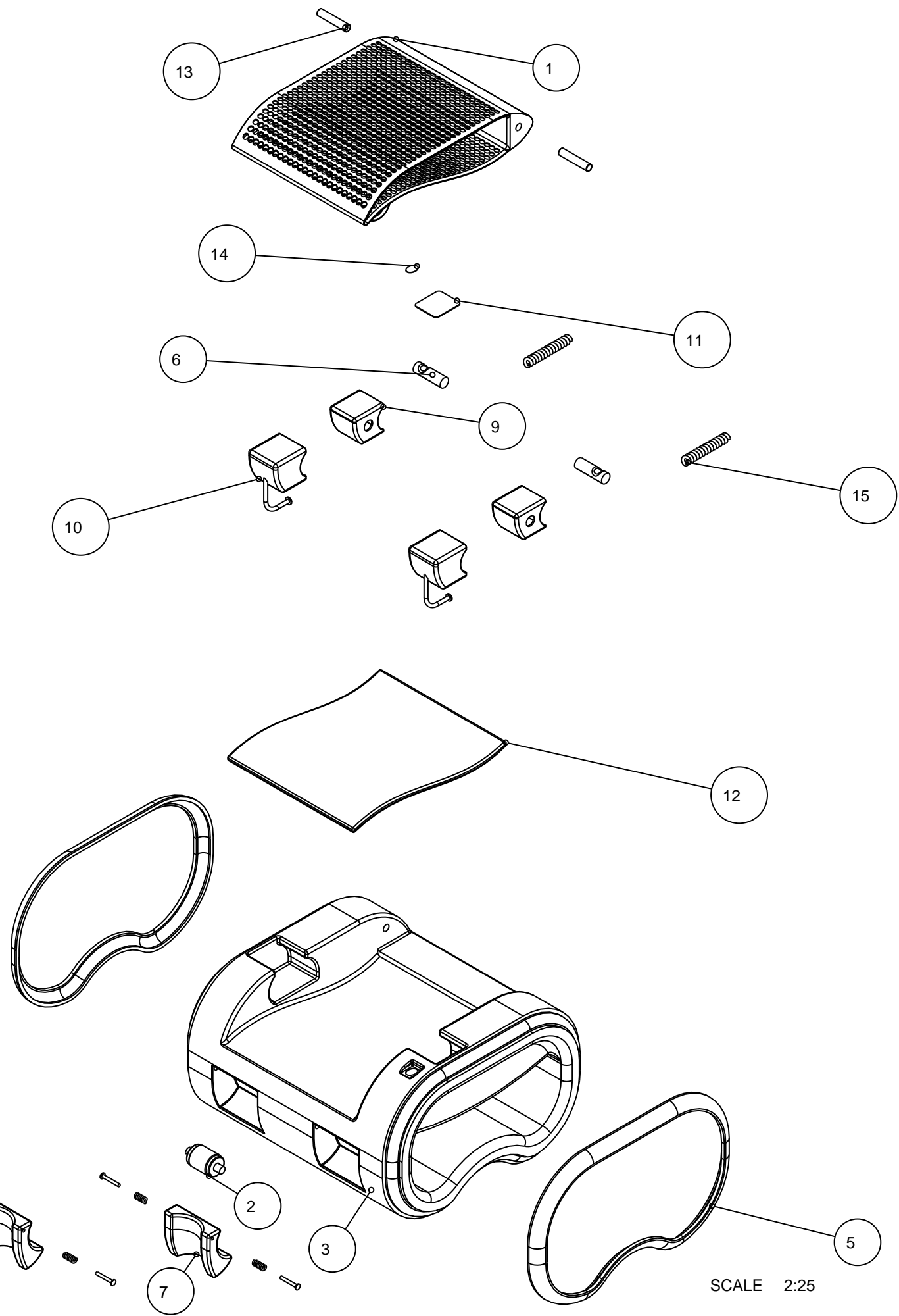


17



15	WEIGHT_SPRING	Stainless Steel	2	Standard (WS15)
14	THUMBPRINT_SCANNER	Reinforced Glass	1	Standard (TS14)
13	SEAT_SWIVEL_PIN	Aluminium	2	Standard (SSP13)
12	SEAT_CUSHION	Memory Foam	1	(SC12)
11	SCREEN_DISPLAY	Capacitive Material	1	Standard (SD11)
10	PALM_SUPPORT	Polycarbonate	2	(PS10)
9	PALM_CUSHION	Memory Foam	2	(PC09)
8	LEG_SWIVEL_PIN	Aluminium	4	Standard (LSP08)
7	LEG_SUPPORT	Synthetic Leather	2	(LS07)
6	HANDGRIP	Foam Rubber	2	(H06)
5	GLOW_TRIMMINGS	Polycarbonate	2	(GT05)
4	FOOT_SPRING	Stainless Steel	4	Standard (FS04)
3	EXTERIOR_STRUCTURE	Polycarbonate	1	(ES03)
2	DC_MOTOR	Various	1	Standard (DCM02)
1	BACKREST	Fabric Mesh	1	(B01)
PT. No.	DESCRIPTION	MAT'L	QTY.	REMARK

NGEE ANN POLYTECHNIC

TITLE:
Exercising Device - Bill of Materials

PROJ.		GEN. TOL.	DR.No.	EXP17
SCALE	2:25	LINEAR	—	DRAWN Zachary Tan
UNIT	mm	ANGULAR	—	CHECKED Mr Richard Lim
DATE	24/1/11	FINISHING	—	APPROVED Mr Richard Lim