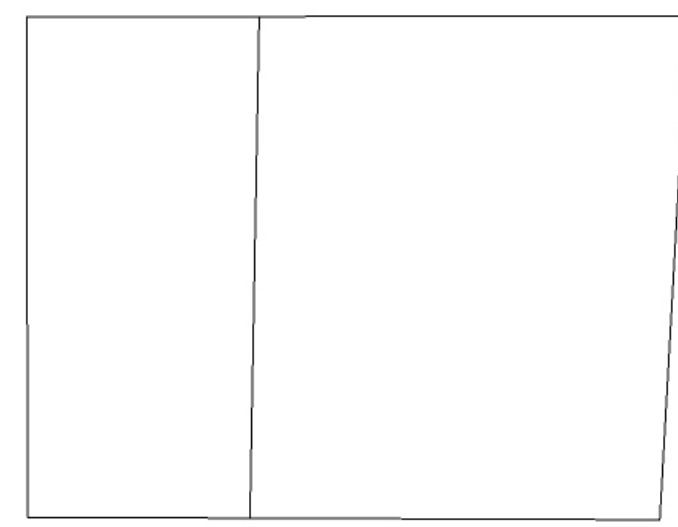
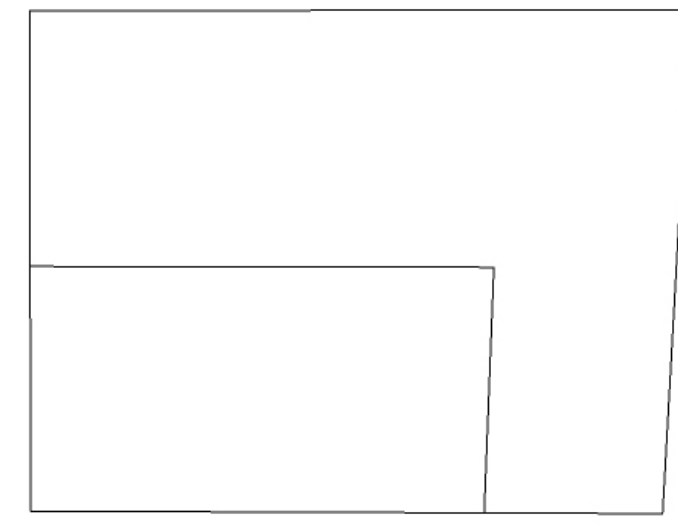


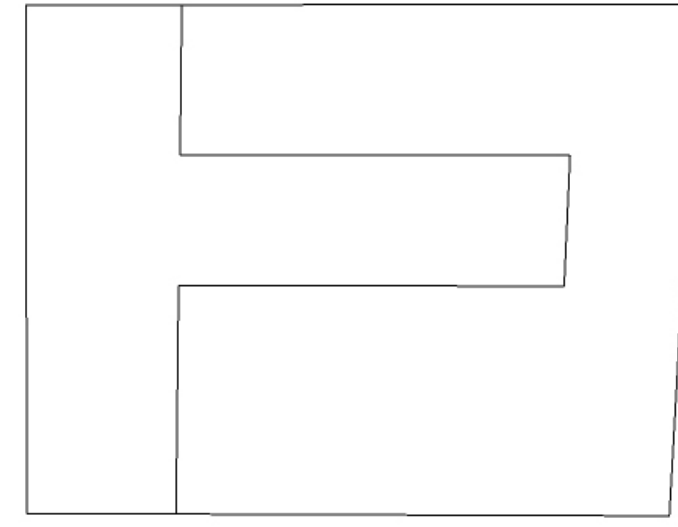
Process of Spatial Organization



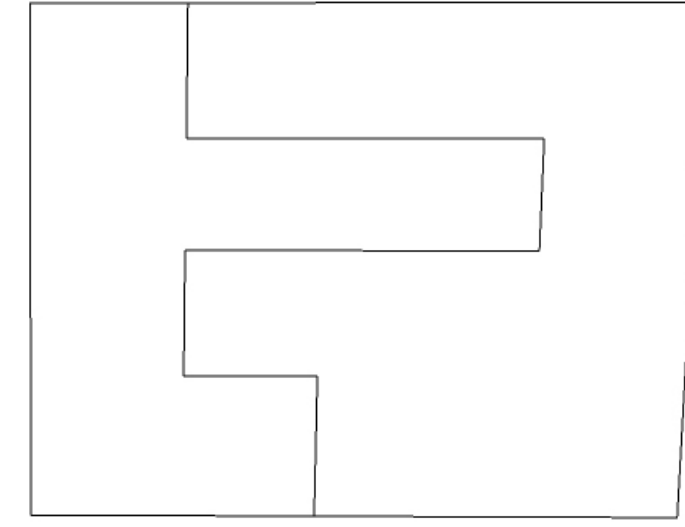
Step 1: Division of Property



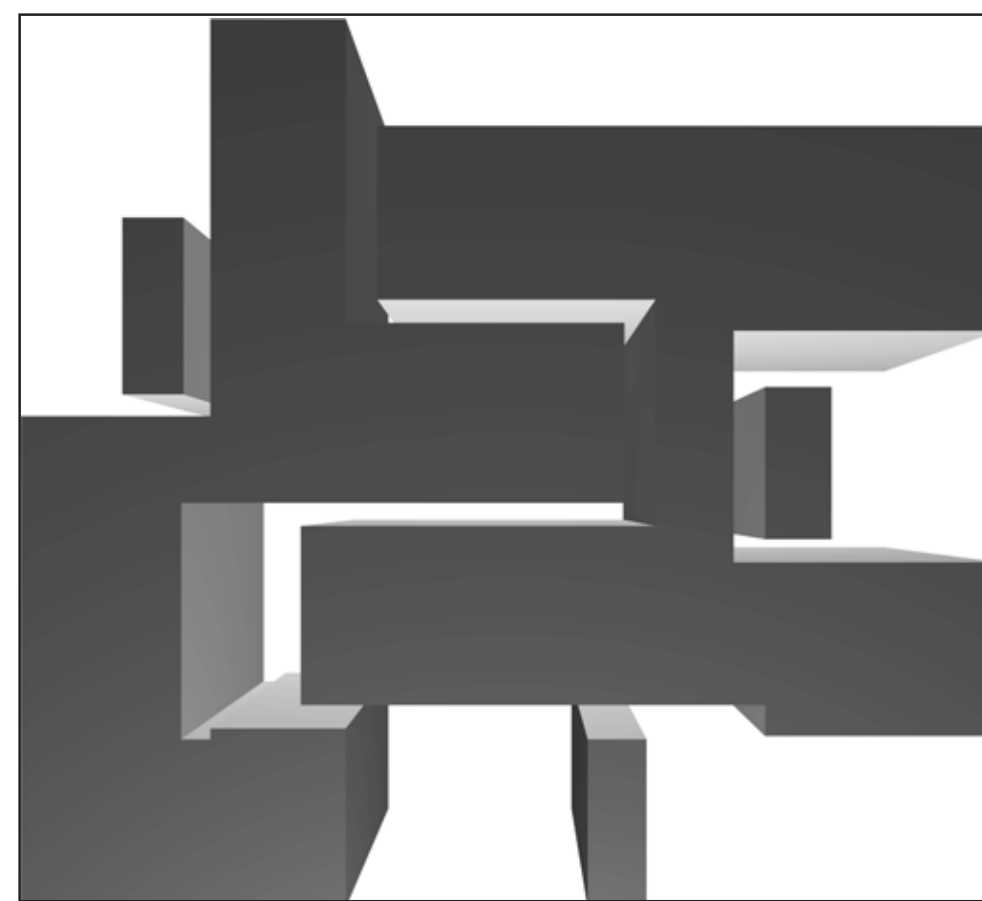
Step 2: House with in a House



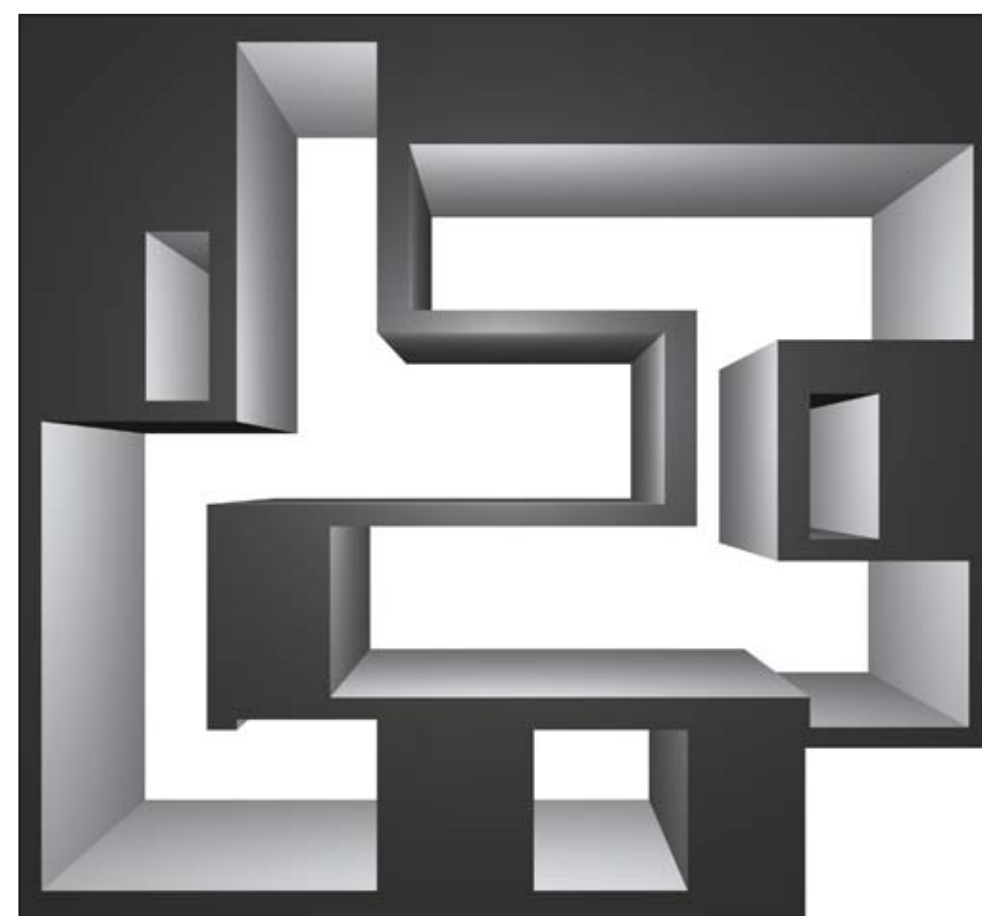
Step 3: Alternating Floors for optimal space



Step 4: Final Design



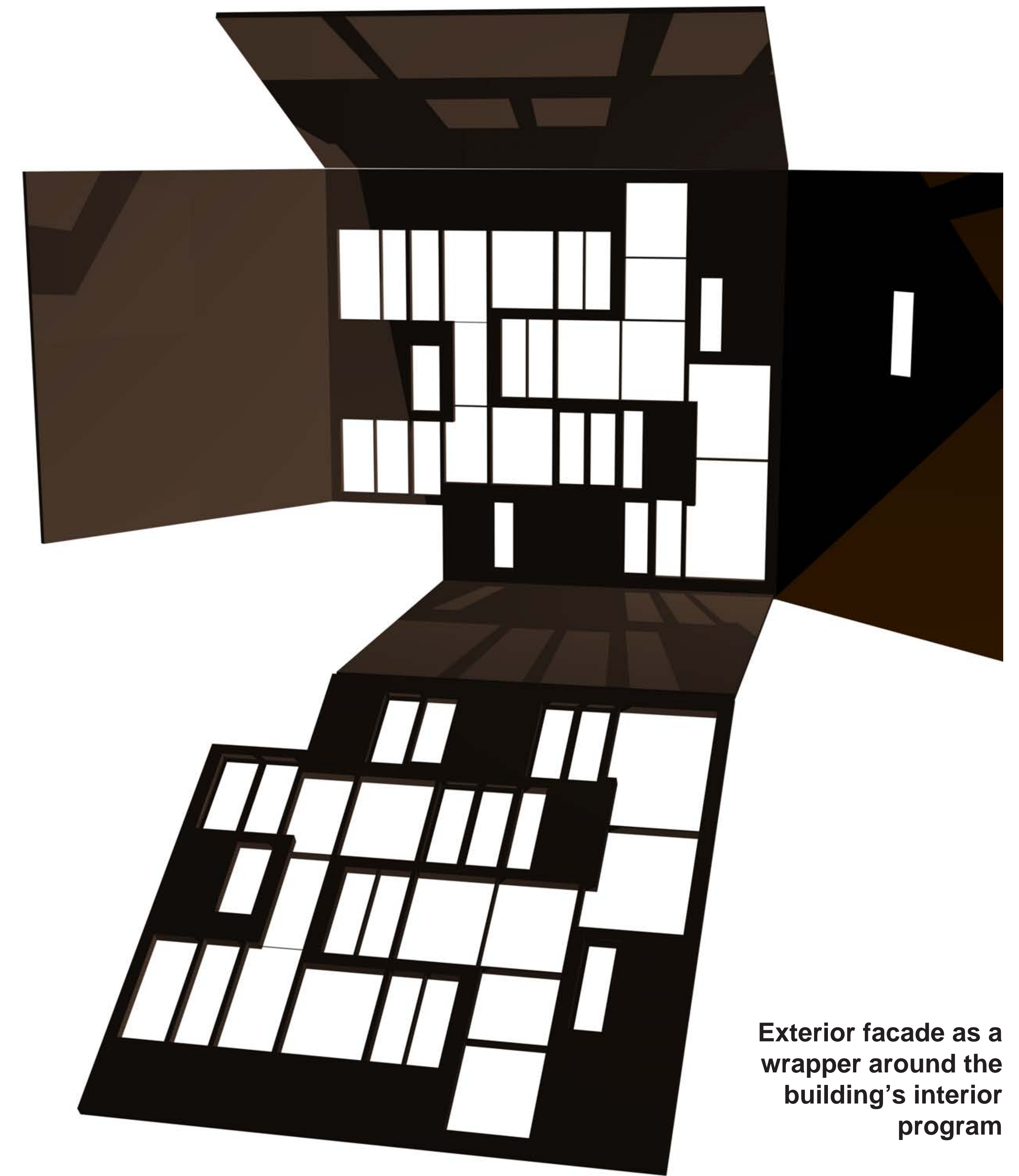
Void Space



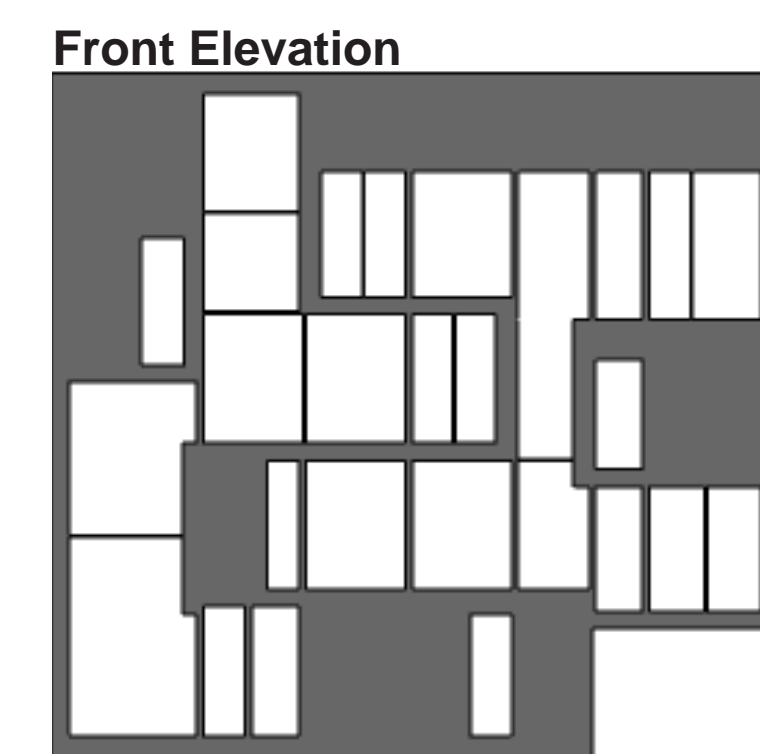
Solids to Voids: Cuts with in the Box



Solids to Voids with fenestration.



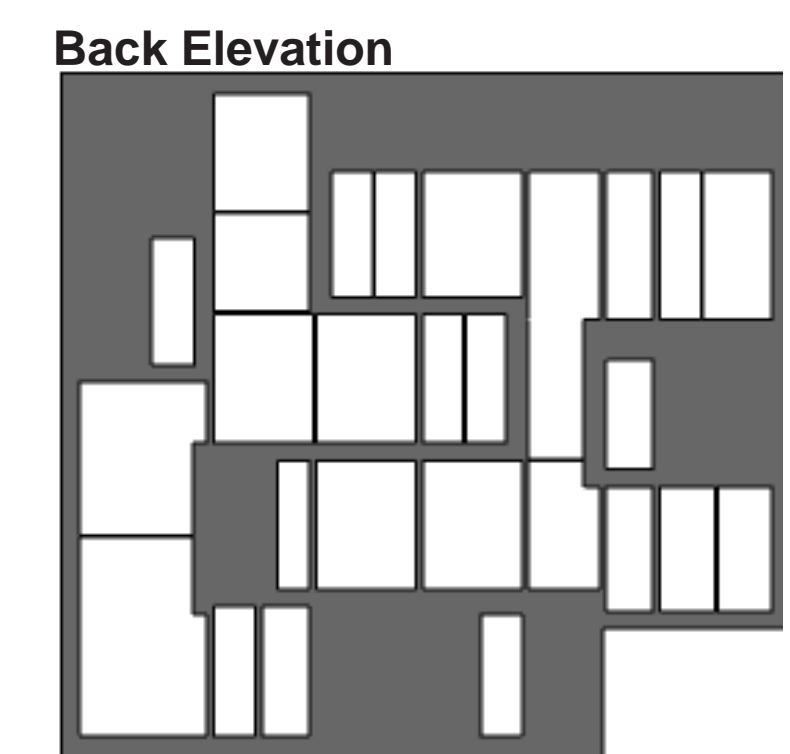
Exterior facade as a wrapper around the building's interior program



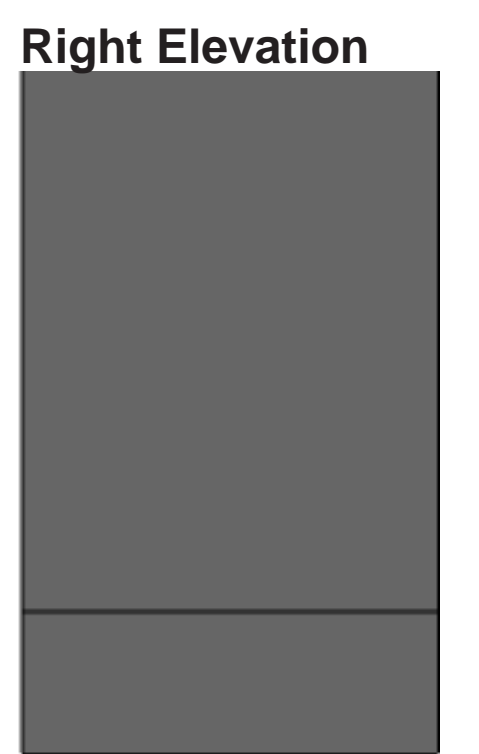
Front Elevation



Left Elevation



Back Elevation



Right Elevation