



Board 3
1 The solar panels are sited on a south facing slope, which receives the most intense, direct sunlight creating the optimal conditions for power production.



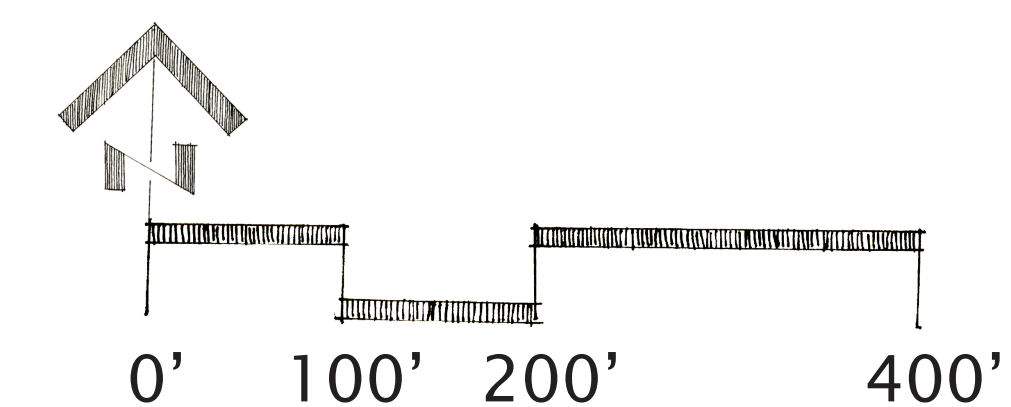
Board 3
2 The Gateway is designed to mimic a Ha-ha, which is a type of boundary used to control livestock, intended to not interrupt the view and to be invisible from close by.



Board 3
3 The design of the Helical Wind Turbine allows power production with much lower wind speeds than the 3 blade wind turbine. Operating at lower wind speeds decreases noise and turbulence.



Board 3
4 Experimental Seed Plots are positioned to follow existing contours, allowing students to conduct research



Eden Hall Farm Campus

Alternative Energy & Seed Farming

Chatham University
Design Studio 3
LAR650

01.06.2009

Stephanie Cup
Mike Harter
Rebekah Johnston
Sara Madden
Debbie Steinberg
John Williams

