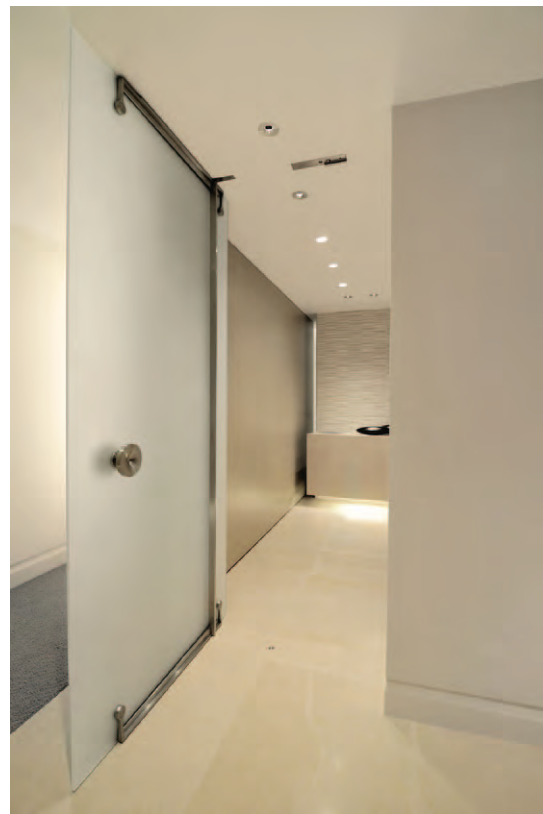


eddyjoaquim

private residence

An extensive update and renovation of a 2800 sf. apartment located on Nob Hill. Exquisite materials and fine detailing provided the client with a tranquil home environment, that is simultaneously rich in texture and color, yet subdued and refined.







broadcast theater

An 80's era 155 seat full broadcast theater remodel at a prominent Fortune 100 technology company. The project required a complete ADA-compliant upgrade, a complete replacement of audio and visual equipment, as well as a complete architectural redesign.

The project required careful coordination with a unique group of speciality sub-contractors, given the highly technical requirements, in addition to the elevated design expectations of the client.



swirl

A mid-sized advertising agency with grand ambitions and modest budget provided an interesting opportunity to think outside the box.



petchitecture

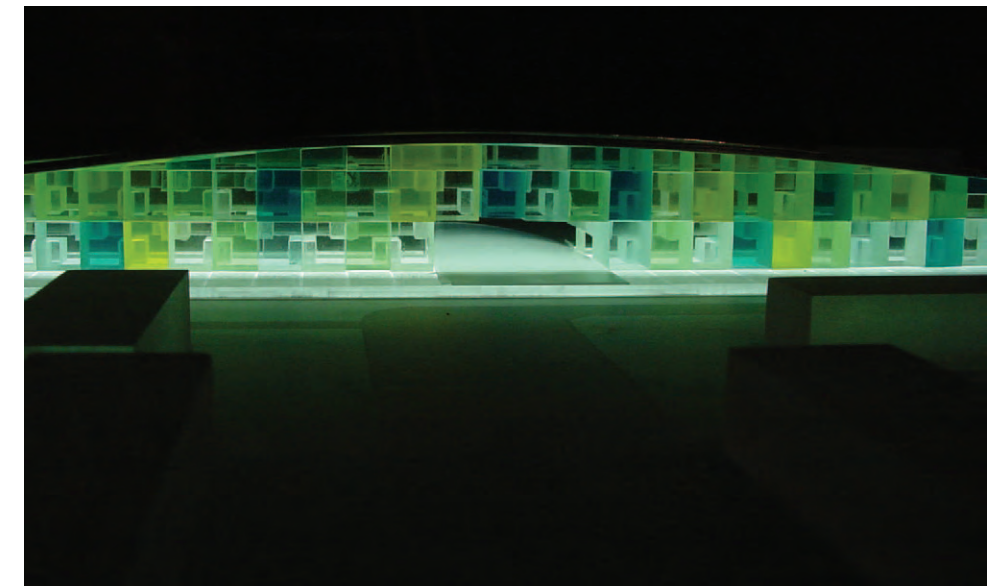
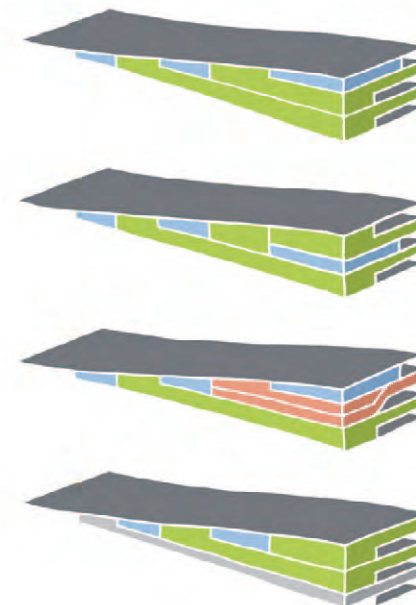
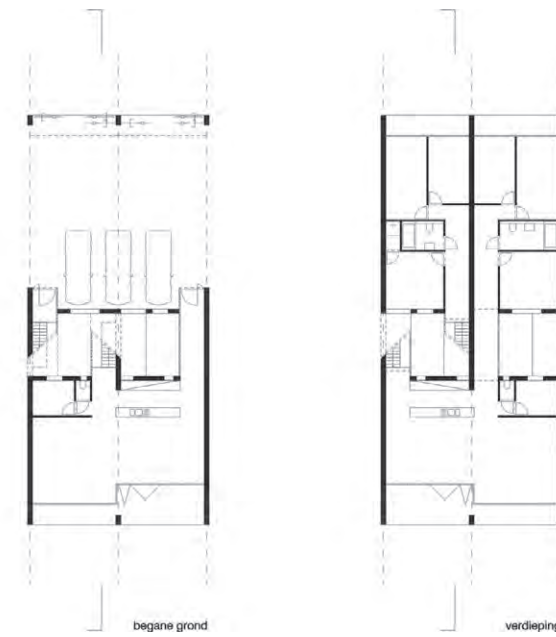
A cat dwelling, hung on any 90 ° inside corner, is a one-off design handmade by a professional surfboard maker. The final result is a unique solution to the age old challenge of keeping the kitty happy.



utopia revisited

An ambitious experiment was carried out in the city of Lelystad: a raised road freeing up a long linear swathe of land for the soul purpose of complying to a design brief that was both unrealistic and uninteresting when using conventional urban design.

The building never got the go ahead, despite the assurance and subsequent feasibility study provided by a major Dutch engineering firm. The project did however spark much discussion in the local community about the potential and future of a much maligned city, and has reactivated a much needed impetus on rethinking and exploring creative solutions.

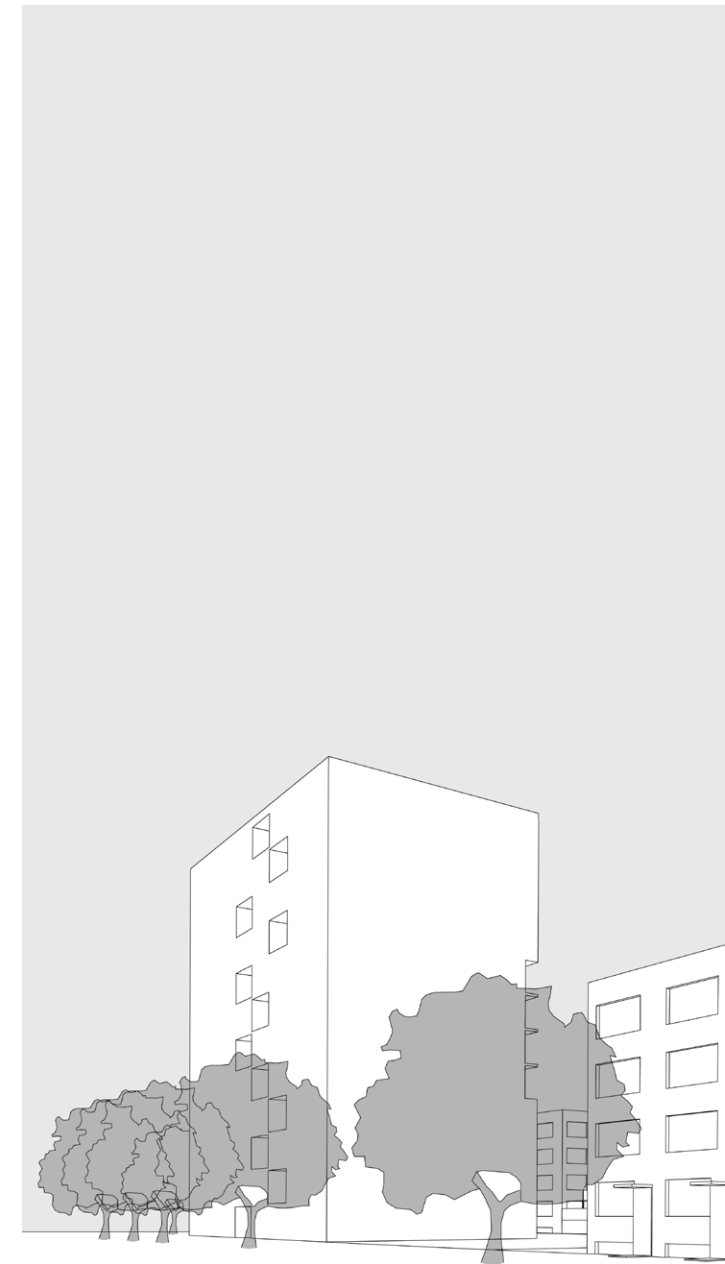
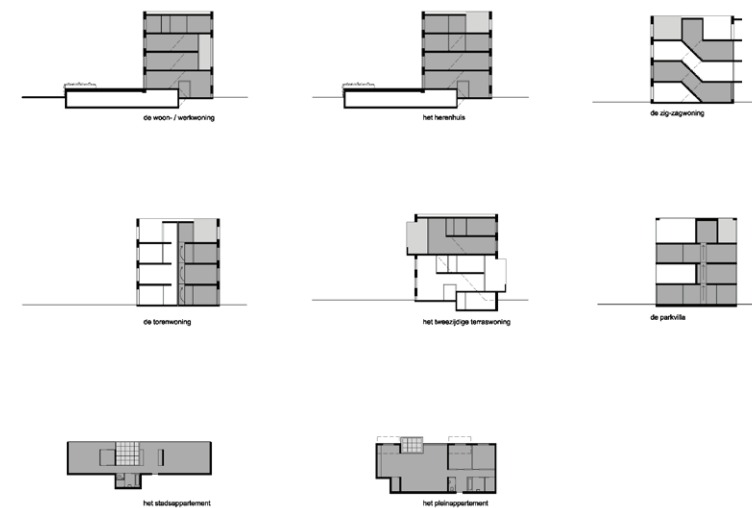


erasmusgaarde

A post-WWII housing development was torn down and replaced with 327 middle income dwellings.

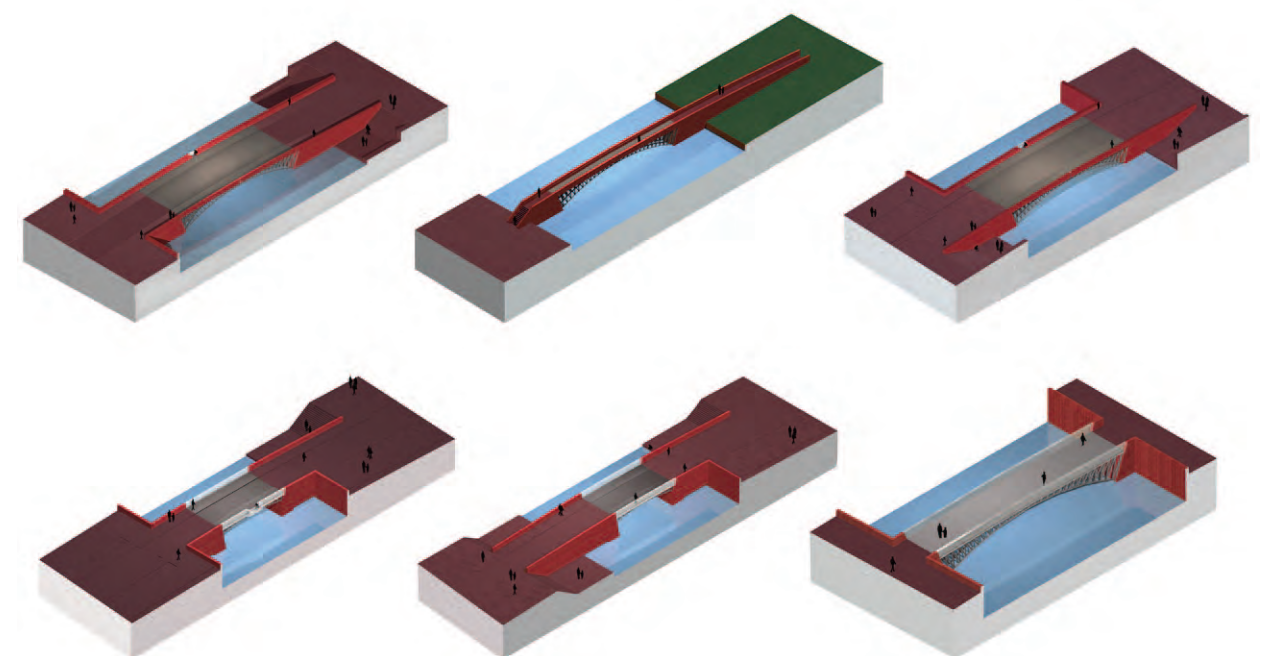
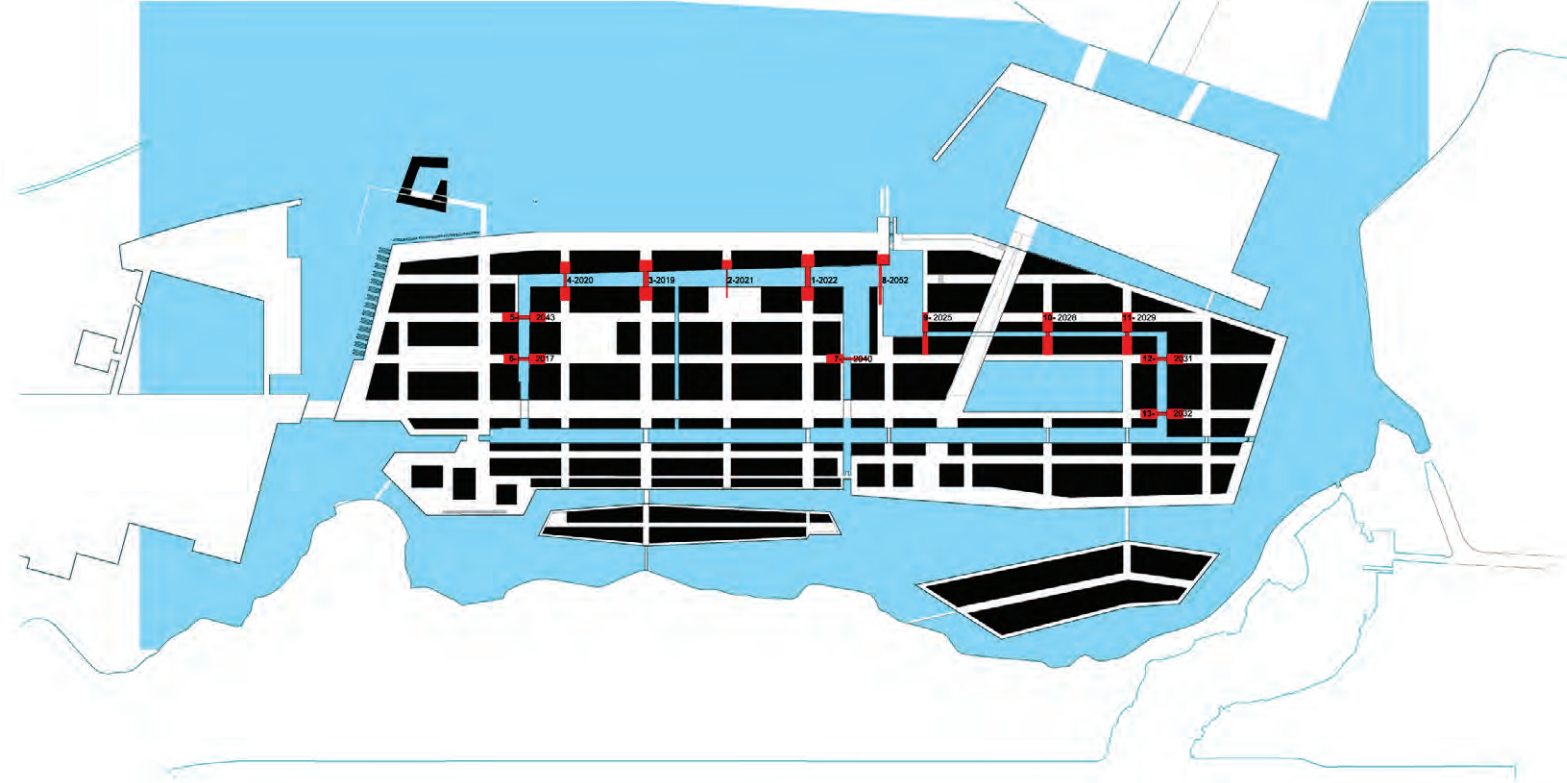
Public and private space are resolved as one complete urban environment, foreseeing various possibilities for the private use of public areas, to afford an interesting and safe urban environment for the dwellers, as well as the greater public.

Various housing typologies were provided, ranging from apartments to 2 or 4 story town-houses, allowing for a mixed variety of occupants to move into the same area.



13 canal bridges

Part of a large scale master plan located in Amsterdam known as IJburg, the new island community of 45,000 to be developed in the coming decade required new canal bridges to straddle the emerging city blocks, as these rose out the shallow waters of the IJ. A family of bridges was devised, all related yet varied and distinct, in deference to specific site conditions and whimsical gestures of differentiation.



eddyjoaquim