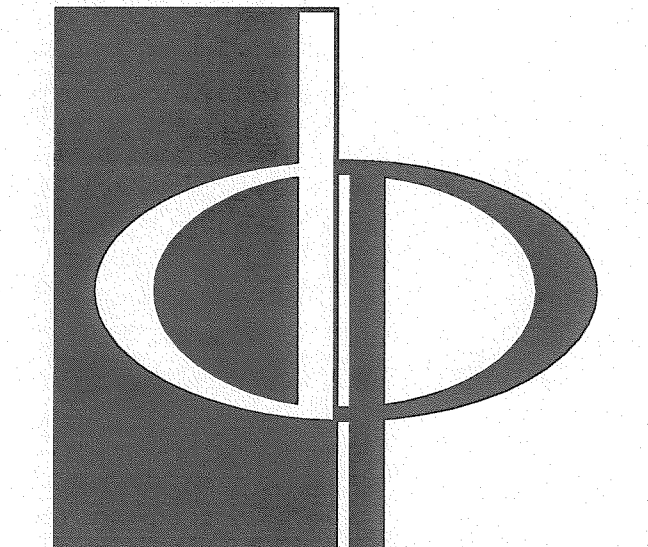
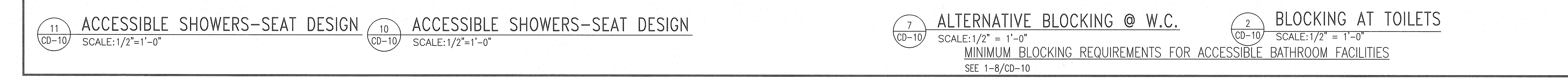
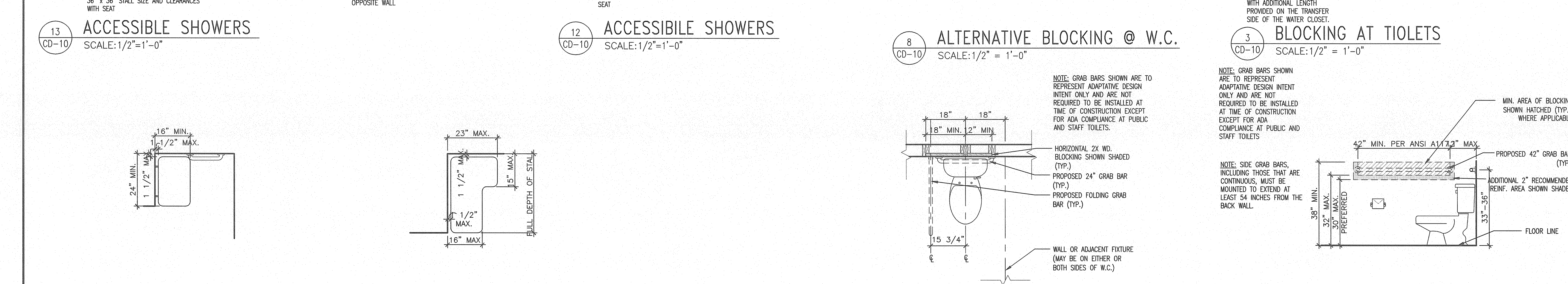
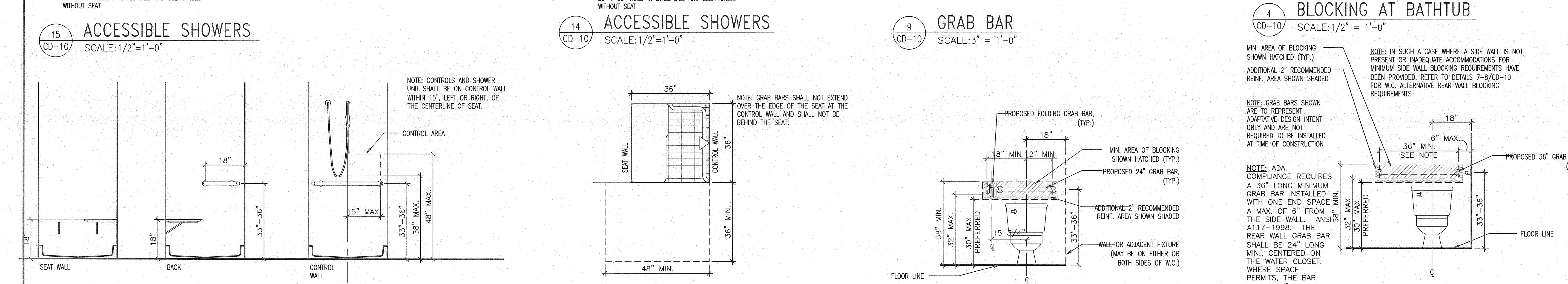
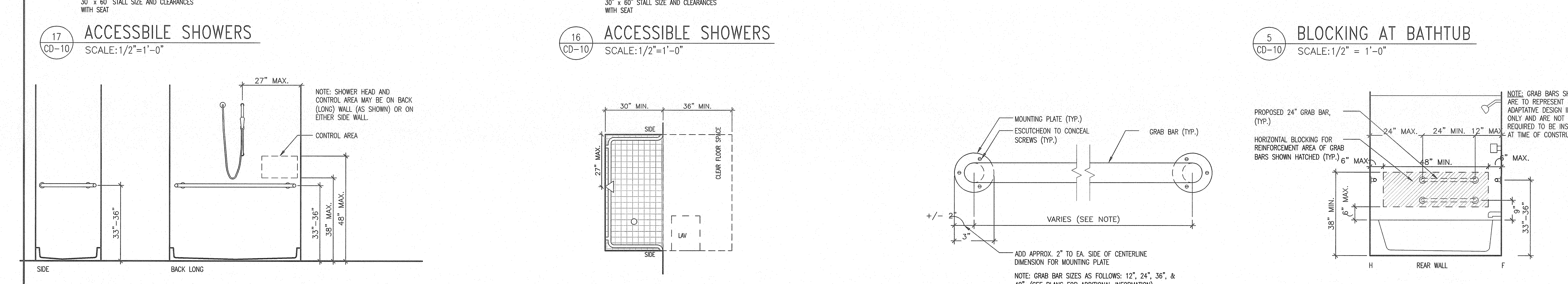
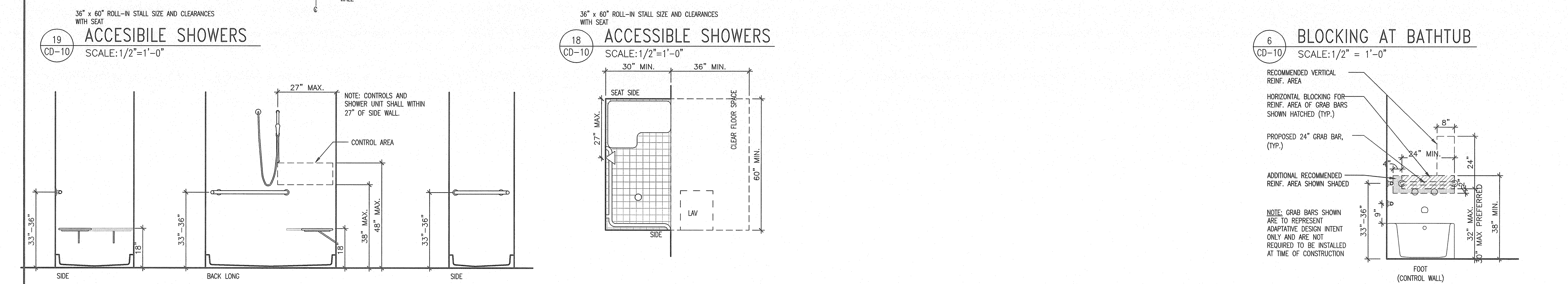


GENERAL NOTES

- PROJECT SHALL COMPLY WITH TEXAS ACCESSIBILITY STANDARDS OF 1994. FOR ALL NEW CONSTRUCTION OF PUBLIC AND COMMON USE FACILITIES AND SPACES (MAIL KIOSKS, EXERCISE / LAUNDRY BUILDINGS, TRASH COMPACTORS, ETC.) THE FOLLOWING CHAPTER REQUIREMENTS ARE TO BE COMPLIED WITH FOR ALL NEW PROJECTS: CHAPTER (2) - GENERAL, (3) MISCELLANEOUS, (4) ACCESSIBLE ELEMENTS AND SPACES AND (7) BUSINESS AND MERCANTILE.
- SITE:
 - ACCESSIBLE SITE & EXTERIOR FACILITIES:
 - ACCESSIBLE ROUTES TO BE PROVIDED THROUGHOUT THE SITE TO ALL BUILDINGS.
 - ACCESSIBLE PARKING SPACES, LOADING ZONES AND CURB RAMPS TO BE PROVIDED. REFER TO CIVIL & LANDSCAPE PLANS FOR ALL ACCESSIBLE ROUTES TO ALL BUILDINGS AND AMENITIES.
 - COMMON USE FACILITIES:
 - ACCESSIBLE STRUCTURES:
 - BUILDINGS, MAIL KIOSKS, EXERCISE / LAUNDRY FACILITIES, COMPACTORS, ETC., PUBLIC AND COMMON USE SPACES MUST BE READILY ACCESSIBLE TO AND USABLE BY PEOPLE WITH DISABILITIES PER FEDERAL, STATE, AND LOCAL MUNICIPAL REGULATIONS AND ANSI A117.1-1998 STANDARDS.
 - EXTERIOR DOORS:
 - PROVIDE 1" MAX. LOW PROFILE THRESHOLD. THRESHOLDS ABOVE 1/4" MUST BE BEVELED NO GREATER THAN 1:2.
 - LEVER TYPE HARDWARE WITH DEAD-BOLT LOCKS TO BE PROVIDED. MAX. HEIGHT OF 48" A.F.F.
 - DOOR CLOSURE: MUST ALLOW FOR "LOW FORCE" TO BE APPLIED IN ORDER TO OPEN.
 - SECURITY VIEWERS (PEEP HOLES) IF PROVIDED IN DOOR, TO BE INSTALLED AT A MAX. OF 44" A.F.F.
 - PROVIDE A MINIMUM OF 32" CLEAR WIDTH OPENING. (3'-0" DOOR)
 - INTERIOR DOORS:
 - ALL DOORS TO PROVIDE A MINIMUM OF 32" CLEAR WIDTH WHEN OPENED. (3'-0" DOOR) AND PROVIDE 1'-6" CLEAR SPACE ON THE "PULL" SIDE AT THE HANDLE.
 - LEVER TYPE HARDWARE TO BE PROVIDED. MAX. HEIGHT OF 48" A.F.F. & MIN. HEIGHT OF 32" A.F.F.
 - KITCHENS / BREAK ROOMS
 - PROVIDE ACCESSIBLE KNEE SPACE UNDER SINK AS REQUIRED.
 - PROVIDE A 2'-6" MIN. (30") WIDE WORK SPACE COUNTERTOP.
 - MAXIMUM HEIGHT OF 34" AT TOP OF SINK AND TOP OF WORK SPACE SURFACE.
 - SINK & PLUMBING TRIM TO BE H.C. ACCESSIBLE APPROVED FIXTURES.
 - REFRIGERATOR NEEDS TO BE "SIDE BY SIDE" ACCESSIBLE, OR HAVE A BOTTOM MOUNTED FREEZER.
 - ALL APPLIANCE CONTROLS NEED TO BE FRONT MOUNTED AND LESS THAN 4'-0" (48") A.F.F. TYP.
 - PROVIDE A 2'-6" (30") X 4'-0" (48") CLEAR FLOOR SPACE (C.F.S.) APPROACH TO ALL APPLIANCES. C.F.S. MAY OVERLAP EACH OTHER.
 - CLEAR FLOOR SPACE OF 30" X 48" IS REQUIRED WITHIN KITCHENS TO ALLOW FOR PARALLEL OR PERPENDICULAR APPROACH TO THE APPLIANCES AND FIXTURES. TYP. SEE UNIT PLANS FOR ADDITIONAL INFORMATION.
 - RESTROOMS:
 - PROVIDE ACCESSIBLE KNEE SPACE UNDER SINK AS REQUIRED.
 - ACCESSIBLE LAVATORY HEIGHT TO BE 34" MAXIMUM A.F.F.
 - INSTALL GRAB BARS AT H.C. ACCESSIBLE TOILET STALLS AS REQUIRED.
 - TOILET ACCESSORIES TO MEET ALL H.C. ACCESSIBLE REACH RANGES, AND BE APPROVED H.C. FIXTURES.
 - ALL PLUMBING FIXTURES & TRIM UTILIZED IN H.C. ACCESSIBLE STALLS AND LAVATORIES SHOULD BE H.C. APPROVED FIXTURE TYPES.
 - PROVIDE A 60" DIAMETER CLEAR FLOOR SPACE TURNING RADIUS WITHIN ROOM EXCLUSIVE OF DOOR SWING.
 - ROLL-IN SHOWER TYPES TO PROVIDE CLEAR FLOOR SPACE, GRAB BARS AND ACCESSIBLE SEAT. SEE DETAILS.
 - WALL DIMENSIONS AND FIXTURE LOCATIONS MUST BE HELD SO THAT THE MINIMUM CLEARANCES ARE PROVIDED AS SHOWN.
 - PROVIDE 2x MEMBER SIZE REQUIRED WOOD BLOCKING IN LINE OF STUD PLANE FOR WALLS NOTED AS REQUIRING REINFORCING FOR ALL GRAB BARS. SEE DETAILS.
 - LAVATORIES ARE TO BE INSTALLED WITH THE CENTERLINE OF THE FIXTURE A MINIMUM OF 1'-6" HORIZONTALLY FROM FINISHED SURFACE OF AN ADJACENT WALL OR FIXTURE.
 - ACCESSIBLE URINALS IN COMMON USE BUILDINGS, LIP TO BE SET AT 17" MAX. A.F.F.
 - FLOOR FINISHES:
 - PROVIDE "NON-SLIP" ABRASIVE SURFACE THROUGHOUT BUILDINGS ALONG ALL ACCESSIBLE ROUTES.
 - FLOOR TRANSITIONS BETWEEN DIFFERENT MATERIALS NEED TO BE FLUSH, OR MEET THE 1" MAX. THRESHOLD REQUIREMENTS.
 - ELECTRICAL / ENVIRONMENTAL CONTROLS:
 - LIGHT SWITCHES, ELECTRICAL OUTLETS, THERMOSTATS AND OTHER ENVIRONMENTAL CONTROLS: ITEMS MUST BE POSITIONED SO THAT CONTROLS ARE LOCATED NOT HIGHER THAN 48" A.F.F. ELECTRICAL OUTLETS MOUNTED SO THAT THE MINIMUM HEIGHT IS 15" A.F.F. CONTROLS AND / OR OUTLETS MOUNTED NOT HIGHER THAN 44" (HORIZONTALLY) ABOVE THE COUNTERTOPS. SEE DETAILS, TYP.
 - PROVIDE AUDIBLE FIRE ALARMS & STORAGE STROBE LIGHTS AS REQUIRED.
 - MISCELLANEOUS / OTHER:
 - CORRIDORS TO HAVE A MINIMUM CLEAR WIDTH OF 4'-0" (48") AND A MIN. HEAD HEIGHT OF 6'-8" (80").
 - ELECTRIC WATER COOLERS & DRINKING FOUNTAINS TO BE MOUNTED AT 36" TO TOP OF SPOUT.
 - UNOBTAINED PUBLIC PAY-PHONES TO BE MOUNTED AT 48" TO TOP OF PHONE, AND WITH H.C. REACH RANGES.
- IT IS THE INTENT OF THE CONTRACT DOCUMENTS TO COMPLY WITH ALL APPROPRIATE FAIR HOUSING ACCESSIBILITY GUIDELINES AND GENERAL NOTES FOR LIVING UNITS AND GENERAL NOTES ON SHEET CD-09 AND ADA ACCESSIBILITY GUIDELINES AND GENERAL NOTES FOR PUBLIC AND COMMON USE FACILITIES ON SHEETS CD-10 & CD-11.
- REPORT ANY CONFLICTS OR DISCREPANCIES TO THE ARCHITECT.

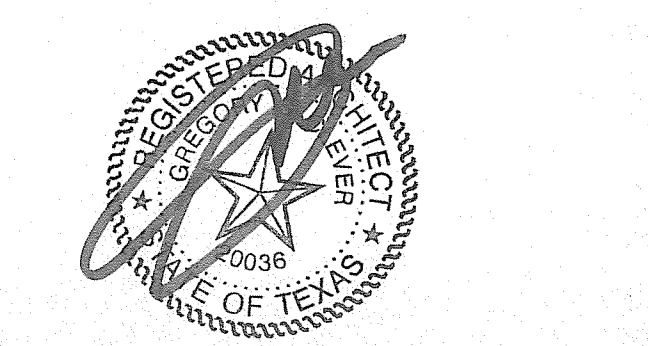


THE PRESTON PARTNERSHIP, LLC
A MULTI-DISCIPLINARY DESIGN FIRM

1000 ABERNATHY ROAD NE, SUITE 600
ATLANTA, GEORGIA 30328
TELEPHONE: 770 396 7248
FAX: 770 396 2945

WWW.THEPRESTONPARTNERSHIP.COM
CONSULTANT

SEAL
TDLR# EABPRJA7817013



JUL 18 2007

PROJECT
MEMORIAL HEIGHTS PHASE I
HOUSTON, TEXAS

FOR

ARCISIONI SMITH
201 SOUTH HEIGHTS BOULEVARD
UNIT 1928
HOUSTON, TEXAS 77007
713-863-9015

PRINTED
PROGRESS SET 06/22/07
ISSUED FOR PERMIT 07/18/07

REVISIONS

DATE	DESCRIPTION
07/18/07 <td>ADDED PER ANSI A117.1-1998</td>	ADDED PER ANSI A117.1-1998
0511701	REVISED PER ARCHITECT
REE	DRAWN BY
JRS	CHECKED BY
ADA	SHEET TITLE
ACCESSIBILITY GUIDELINES	SHEET NUMBER

CD-10