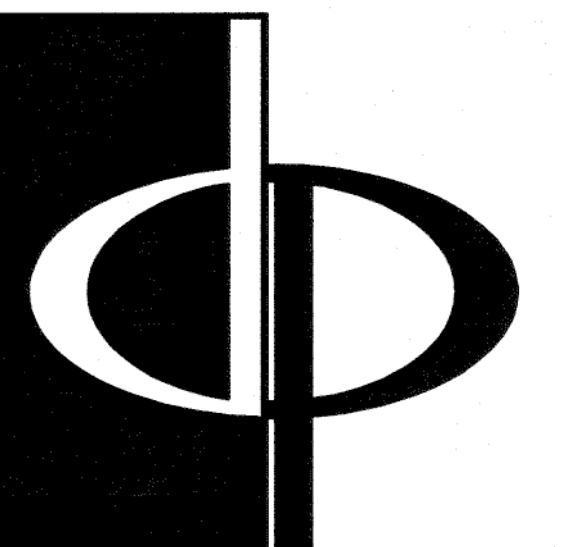


GENERAL SECTION NOTES

- POST-TENSIONED SLAB ON GRADE W/ 6 MIL. POLY VAPOR BARRIER ON 3% COMPACTED SOIL. 4 TERTITE TREATED. SEE STRUCTURAL DRAWINGS FOR FOUNDATIONS & DETAILS. (CONCRETE RATED VAPOR BARRIER - 2 LAYERS OF 6 MIL. POLY FIBER REINFORCED BITUMINOUS MEMBRANE SANDED BETWEEN 2 LAYERS OF POLYETHYLENE OVERLAP & TAPE JOINTS EVERY 12" MINIMUM)
- TYPICAL MASONRY WALL ASSEMBLY (UL 1856, 1 HOUR)  
 1/2" TYPE 'X' GYPSUM WALL BOARD, 2x4 WOOD STUDS SPACED AS REQUIRED BY STRUCTURAL W/ R-13 BATT INSULATION, EXTERIOR GRADE SHEATHING PER STRUCTURAL, TYVEK BUILDING WRAP AND 2-COAT STUCCO SYSTEM ON SELF-FURRING GALVANIZED METAL LATH (PAINTED ELASTOMERIC FINISH)
- TYPICAL BASE PLATE ASSEMBLY  
 1/2" 2x MDDL WITH CONTINUOUS BEAD OF SEALANT & SEAL GASKET, ANCHOR PER STRUCTURAL SPECIFICATIONS FOR VARIOUS SHEAR WALL TYPES, TYP.
- TYPICAL STUCCO EXTERIOR WALL ASSEMBLY (UL 1856, 1 HOUR)  
 1/2" TYPE 'X' GYPSUM WALL BOARD, 2x4 WOOD STUDS SPACED AS REQUIRED BY STRUCTURAL W/ R-13 BATT INSULATION, EXTERIOR GRADE SHEATHING PER STRUCTURAL, TYVEK BUILDING WRAP AND 2-COAT STUCCO SYSTEM ON SELF-FURRING GALVANIZED METAL LATH (PAINTED ELASTOMERIC FINISH)
- TYPICAL UNIT FLOOR/CEILING ASSEMBLY (UL 1501, 1 HOUR)  
 1" GYPCRETE ON 1" SOAND INSULATION MAT (R-25 BY USG CORP) ON 1/2" PLYWOOD SHEATHING ON 18" PARALLEL CHORD TRUSS, SEE UNIT FRAMING PLAN. CEILING TO BE NO. 26 MSG GALVANIZED STEEL FURRING CHANNELS @ 24" O.C. PERPENDICULAR TO TRUSS AND ONE 1/2" TYPE 'C' GYPSUM BOARD. PROVIDE R-II BATT INSULATION.
- TYPICAL ROOF/CEILING ASSEMBLY (UL 1502, 1 HOUR)  
 1/2" TYPE 'C' GYPSUM WALL BOARD OVER 25 MSG GALVANIZED STEEL RESILIENT CHANNELS @ 16" O.C. (MAX) ON PREMANUFACTURED WOOD TRUSSES. R-30 BLOW-IN-INSULATION & VAPOR RETARDER, PROVIDE EXTERIOR GRADE GYPSUM WALL BOARD AT ALL WEATHER EXPOSED CONDITIONS
- TYPICAL ROOF ASSEMBLY  
 ASPHALT SHINGLES ON 1/2" BUILDING FELT ON 1/2" OSB, EXPOSURE ROOF DECKING WITH STEEL FLYCLIPS ON PREMANUFACTURED WOOD TRUSSES @ 24" O.C.
- ANCHORS @ EACH TRUSS, SEE STRUCTURAL DRAWINGS
- INSULATION Baffle WITH BLOCKING AS REQUIRED. MAINTAIN 2" MINIMUM CLEAR SPACE FOR ATTIC VENTILATION.
- 42" HIGH METAL GUARDRAIL
- WOOD BASE AND SEALANT, TYP.
- TYPICAL TENANT SEPARATION WALL ASSEMBLY (UL 1856, 1 HOUR)  
 ONE 1/2" TYPE 'X' GYPSUM WALL BOARD TO EACH SIDE OF DOUBLE ROW 3/4" WOOD STUDS ON SEPARATE PLATES 1" APART, BATT INSULATION ON BOTH SIDES. SEE STRUCTURAL FOR STUD SPACING.
- TYPICAL UNIT/CORRIDOR WALL ASSEMBLY (UL 1856, 1 HOUR)  
 ONE LAYER 1/2" TYPE 'X' GYPSUM WALL BOARD TO EACH SIDE OF DOUBLE ROW 3/4" WOOD STUDS WITH SPRAY APPLIED CELLULOSE INSULATION.
- TYPICAL CORRIDOR FLOOR/CEILING ASSEMBLY (UL 1501, 1 HOUR)  
 1" GYPCRETE ON 1/2" PLYWOOD SHEATHING ON PREMANUFACTURED WOOD TRUSSES. CEILING TO BE ONE 1/2" TYPE 'C' GYPSUM WALL BOARD ON RESILIENT CHANNELS
- TYPICAL BALCONY FLOOR/CEILING ASSEMBLY (UL 1501, 1 HOUR)  
 LIGHTWEIGHT CONCRETE (MINIMUM THICKNESS 3/4") ON WATERPROOF MEMBRANE ON FLOOR SHEATHING ON PREMANUFACTURED WOOD TRUSSES. SEE STRUCTURAL FOR JOIST SIZE AND SPACING. CEILING TO BE NO. 26 MSG GALVANIZED STEEL FURRING CHANNELS @ 24" O.C. PERPENDICULAR TO FLOOR FRAMING AND ONE 1/2" TYPE 'UR' EXTERIOR CEILING GYPSUM BOARD
- TYPICAL BREEZEWAY FLOOR/CEILING ASSEMBLY (UL 1501, 1 HOUR)  
 SYSTEM 9, 2" MAX. LIGHTWEIGHT CONCRETE ON 1/2" FELT ON PLYWOOD SUBFLOOR ON PREMANUFACTURED WOOD TRUSSES (REF. FRAMING PLAN). CEILING TO BE ONE 1/2" TYPE 'C' GYPSUM WALL BOARD ON RESILIENT CHANNELS
- TYPICAL BREEZEWAY ROOF/CEILING ASSEMBLY (UL 1502, 1 HOUR)  
 ONE 1/2" UL CLASS FIRE-RATED, MOISTURE RESISTANT SOFT GYPSUM WALL BOARD ON 1/2" MSG STEEL RESILIENT CHANNELS ON PREMANUFACTURED WOOD TRUSSES
- TYPICAL UNIT/BREEZEWAY WALL ASSEMBLY (UL 1805, 1 HOUR)  
 2-COAT STUCCO SYSTEM WITH ELASTOMERIC FINISH (INSTALL PER MANUFACTURER'S SPECIFICATIONS) OVER PAPER-BACKED GALVANIZED METAL LATH ON GREEN GUARD AIR & MOISTURE BARRIER ON 1/2" TYPE 'X' GYPSUM WALL BOARD ON 2x WOOD STUDS (SIZED & SPACED AS REQUIRED BY STRUCTURAL) WITH SPRAY-APPLIED CELLULOSE INSULATION WITH 1/2" TYPE 'X' GYPSUM WALL BOARD
- TYPICAL 4HR FIREWALL SEPARATION (UL-1801)
- HARDIE PANEL SOFFITS (SMOOTH) WITH A 2" CONTINUOUS VENT STRIP (6.4 SQ. IN. OF NET FREE VENTILATION PER LINEAR FOOT) BETWEEN EACH WITH K2 AND CONTINUOUS SEALANT AROUND PERIMETER.
- 3/8" HARDI FASCIA OVER 2x WOOD BLOCKING
- NOT USED
- NOT USED
- 3/4" HARDI FASCIA OVER 2x WOOD BLOCKING
- 3/4" HARDI TRIM OVER 2x WOOD BLOCKING
- GLASS FIBER REINFORCED CONCRETE COLUMN, PAINTED
- PREFINISHED ALUMINUM HALF-ROUND GUTTER. FASTEN PER MANUFACTURER INSTRUCTIONS AND PAINT TO MATCH TRIM. DOWNSPOUT SHALL BE 4" DIAMETER ROUND, TYPICAL.
- 4" PERFORATED DRAIN PIPE W/ HOLES ORIENTED DOWNWARD. SLOPE TO DAYLIGHT OR STORM SEWER. WRAP PIPE W/ 3/2" MIN. RIVER ROCK AND COVER W/ FILTER FABRIC.
- GALVANIZED METAL CONTROL JOINT (FINISH TO MATCH STUCCO)
- 4" COMPACTED GRAVEL
- CONCRETE RATED VAPOR BARRIER - (2) LAYERS 6 MIL. POLY FIBER-REINFORCED BITUMINOUS MEMBRANE. OVERLAP & TAPE JOINTS EVERY 12" MINIMUM.
- GALVANIZED DRIP EDGE FLASHING. FINISH TO MATCH FASCIA
- TYPICAL BRICK VENEER  
 MODULAR BRICK WITH GALVANIZED ADJUSTABLE MASONRY ANCHORS @ 16" O.C. VERTICAL AND HORIZONTAL.
- TYPICAL 3-COAT STUCCO VENEER  
 PAPER-BACKED GALVANIZED METAL LATH AND PORTLAND CEMENT STUCCO WITH ACRYLIC FINISH. INSTALL PER MANUFACTURER'S SPECIFICATIONS. SEE A5-14 FOR INSTALLATION DETAILS.



**THE PRESTON PARTNERSHIP, LLC**  
 A MULTI-DISCIPLINARY DESIGN FIRM  
 1000 ABERNATHY ROAD NE, SUITE 600  
 ATLANTA, GEORGIA 30328  
 TELEPHONE: 770 396 7248  
 FAX: 770 396 2945  
 WWW.THEPRESTONPARTNERSHIP.COM  
 FLORIDA FIRM LICENSE NO. AA-0003501  
 CONSULTANT

**PROJECT**  
 LE JARDIN  
 MULTI-FAMILY HOMES  
 CITY OF TAMPA  
 TAMPA, FLORIDA



**PHILLIPS DEVELOPMENT & REALTY, LLC**  
 2000 BRENTWOOD DRIVE  
 RALEIGH, NC 27604  
 919-954-1100

**PRINTED**

PERMIT SUBMITTAL	9/9/25

**REVISIONS**

VALUE ENGINEERING	2/15/21

**DATE**

**JOB NUMBER** 0421701

**DRAWN BY** REE

**CHECKED BY** MDL

**DRAWING TITLE** TYPICAL WALL SECTIONS

**DRAWING NUMBER** A5-01

**COMMENTS**

**STUCCO PROFILES**

1. SEE SHEET A5-20 FOR STUCCO PROFILES AND DIMENSIONS.

**TYVEK NOTES:**

1. OVERLAP ALL HORIZONTAL & VERTICAL SEAMS BY 6" MIN.

2. SEAL ALL SEAMS W/ TYVEK CONTRACTOR'S SHEATHING TAPE.

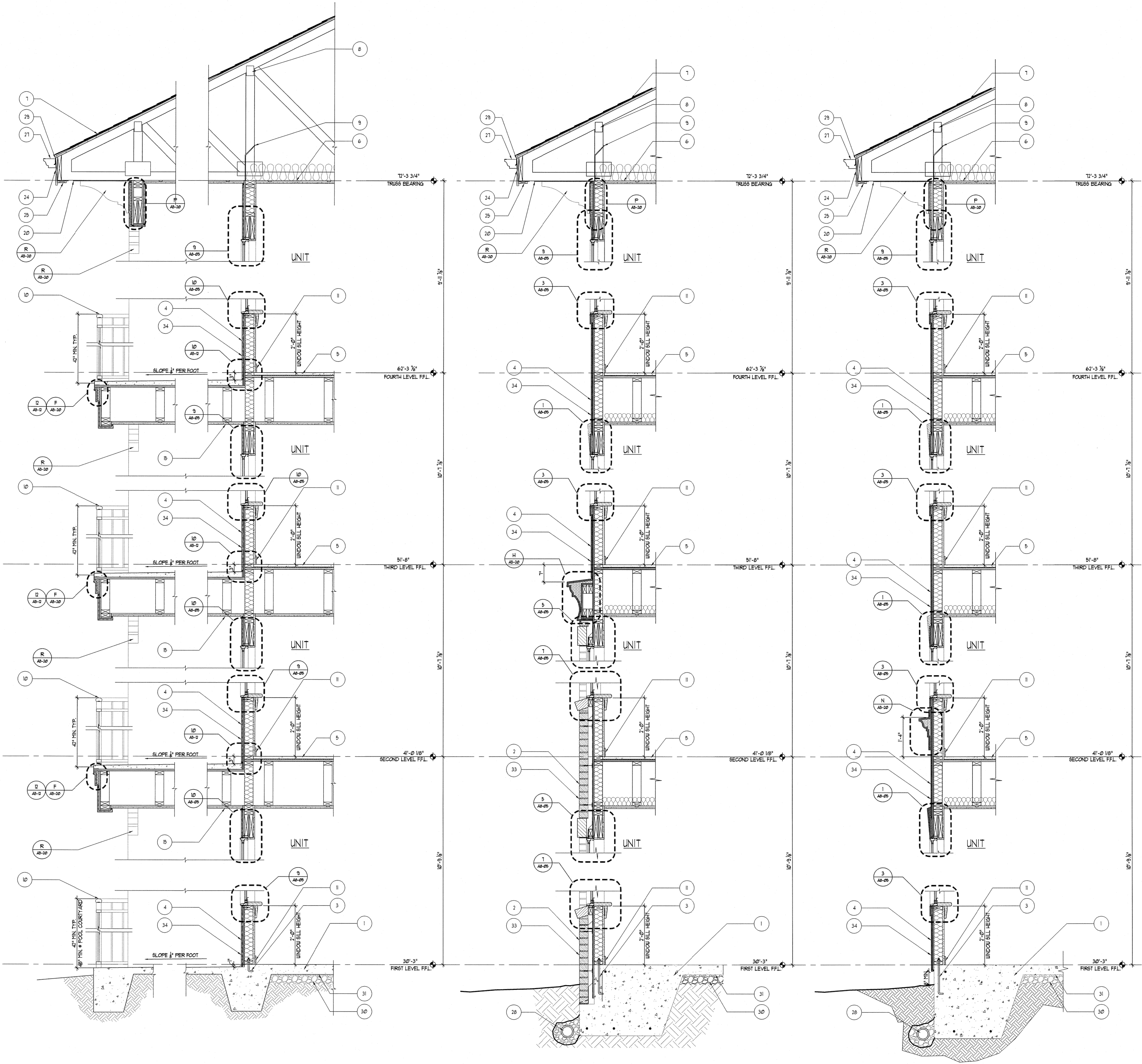
**REVISION #2 SUMMARY**

A. CHANGED ROOF FINISH TO ASPHALT SHINGLES

B. REVISED FINISH FLOOR HEIGHTS

C. CHANGED CONSTRUCTION TYPE TO WOOD FRAME

D. REVISED GENERAL SECTION NOTES



3 TYPICAL BALCONY WALL SECTION  
 SCALE: 3/4"=1'-0"

2 TYP. MASONRY WALL SECTION  
 SCALE: 3/4"=1'-0"

1 TYP. STUCCO WALL SECTION  
 SCALE: 3/4"=1'-0"