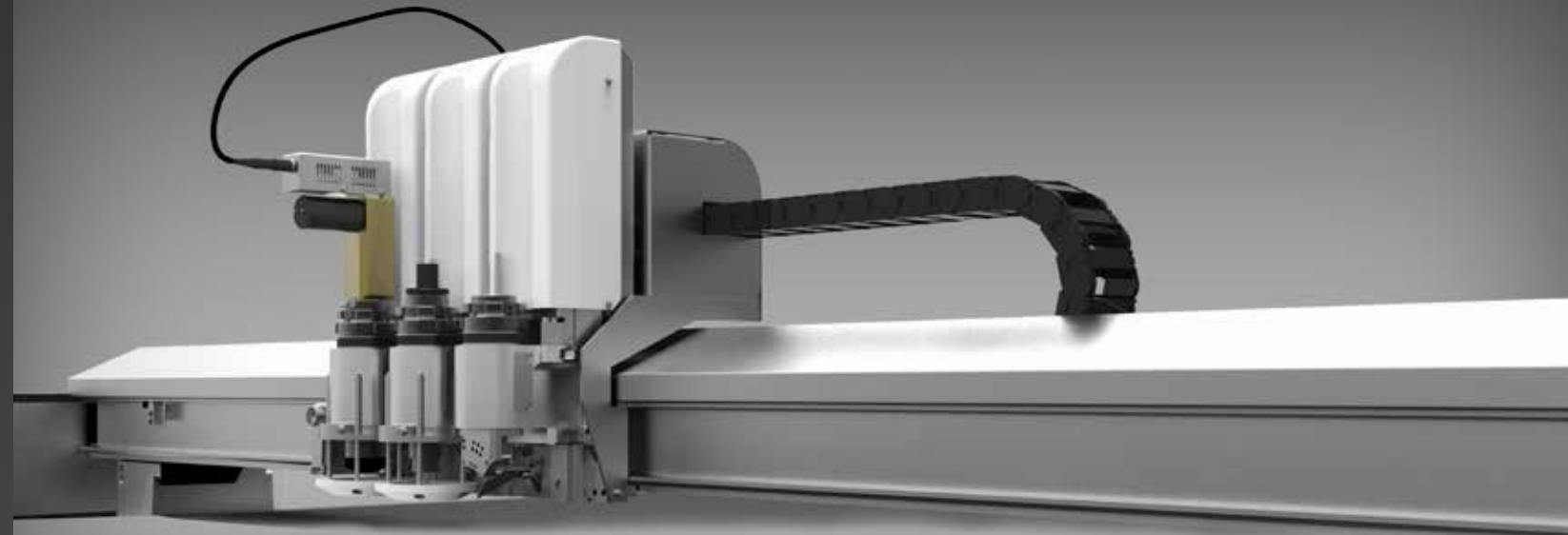


# PROSERIES

HIGH SPEED DIGITAL CUTTING SYSTEM



**NATIONAL / AZON  
EQUIPMENT**

Distributed in the U.S.A. by  
National / AZON  
1148 Rochester Rd.  
Troy, MI 48083

Phone: 800-260-0839  
Email: [info@azon.com](mailto:info@azon.com)  
Website: [www.azonequipment.com](http://www.azonequipment.com)



**NATIONAL / AZON  
EQUIPMENT**

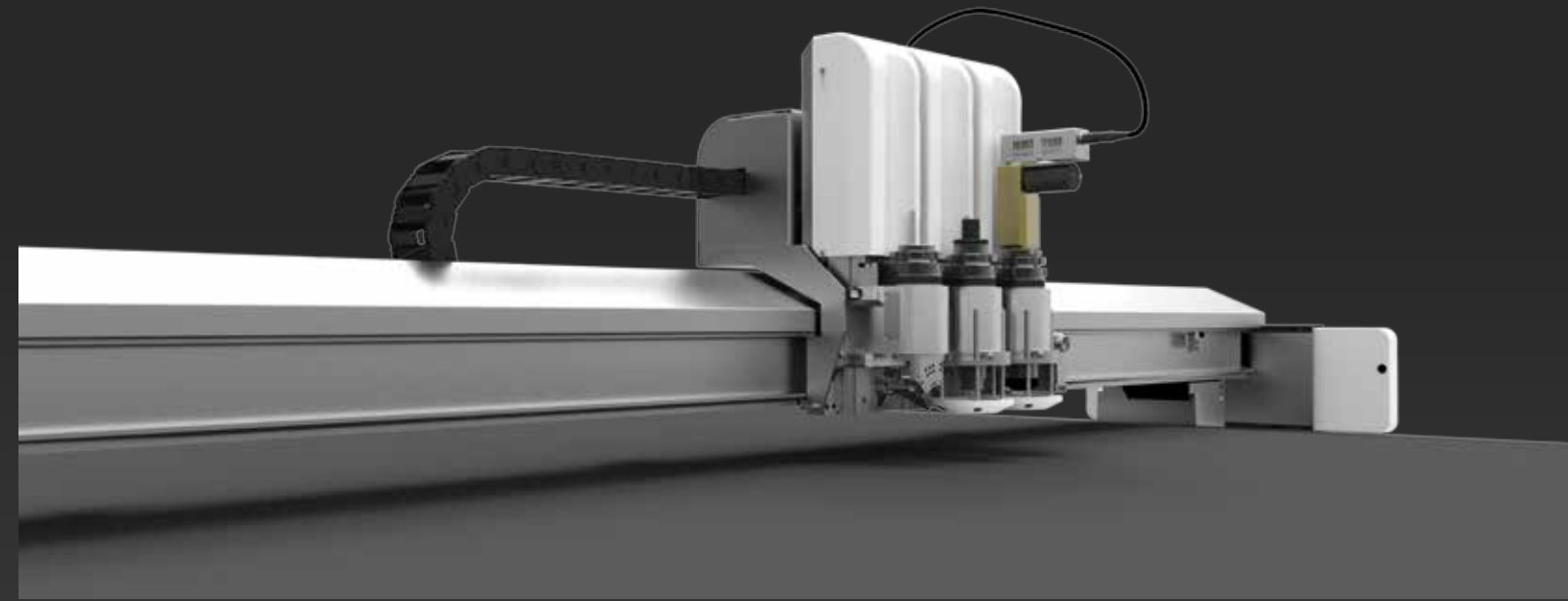
Website: [www.azonequipment.com](http://www.azonequipment.com)



# PRO SERIES HIGH PRECISION DIGITAL CUTTING SYSTEM



**PRO2600** automated production workflow satisfies the need for high efficiency by maximizing the capacity of the system and the operator.



- Material to be processed is sent to the loading area by the sheet feeder
- Materials are fed to the cutting area with the automatic conveyor system
- Camera Registration System (CCD) improves cutting accuracy
- Jobs are processed with high speed cutting tools
- Finished pieces are sent to the collecting table by conveyor system
- Fully automated production minimizes manual intervention

## SPECIFICATIONS

Type	PRO1700	PRO2500	PRO2600
Cutting Area	67" x 51"	98" x 51"	98" x 67"
Machine Dimensions	98" x 82"	126" x 82"	126" x 92"
Max. Cutting Speed	59 ips		
Cutting Accuracy	.00393" or 0.099822mm		
Max. Cutting Thickness	1.969" or 50mm		
Data Format	DXF, HPGL, PDF		
Interface	Serial Port - PC Ethernet		
Media	Vacuum System		
Pump Power	5.5KW / 7.5KW / 9KW		
Power	220V / 50HZ 380V / 50HZ		
Operating Environment	Temperature 32°F - 90°F Humidity 20% - 80%RH		

**THE PRO2600 HIGH PRECISION DIGITAL CUTTING SYSTEMS** perform cutting, kiss cutting, milling, punching, creasing and marking functions with high speed and high precision. With the optional productivity bundle, material handling is automated for increased efficiency. PRO2600 excels at producing short run and mass production in signage, digital graphics, textiles, two and three dimensional displays, prototypes and packaging.

# iBrightCut PRODUCTION SOFTWARE

## ENHANCED USER EXPERIENCE AND EXCEPTIONAL PRODUCTION

### MATERIAL LIBRARY

iBrightCut includes material data and cutting parameters from various industries. This allows users to find the appropriate tools, blades and settings for each project. The material library can be expanded individually by the user. New material data and optimum cutting methods can be defined by users for future jobs.

### POWERFUL GRAPHICS EDITING FUNCTIONS

iBrightCut has design functions commonly used in the Sign & Graphic industry. With iBrightCut, users can edit files and even design and create graphics.

### SIMPLE OPERATION

iBrightCut has powerful functions with easy operation. Users can learn all the functions of iBrightCut within one hour and can operate it proficiently within one day.

### TASK MANAGEMENT

Users can set the cutting task priority, check the previous task record, and obtain historical tasks directly for cutting.

### CUTTING PATH TRACKING

Users can track the cutting path, estimate the cutting time and monitor the progress of a task.

### FLEXIBLE INTERFACE

User can set the shortcut icon and position according to their own habits.

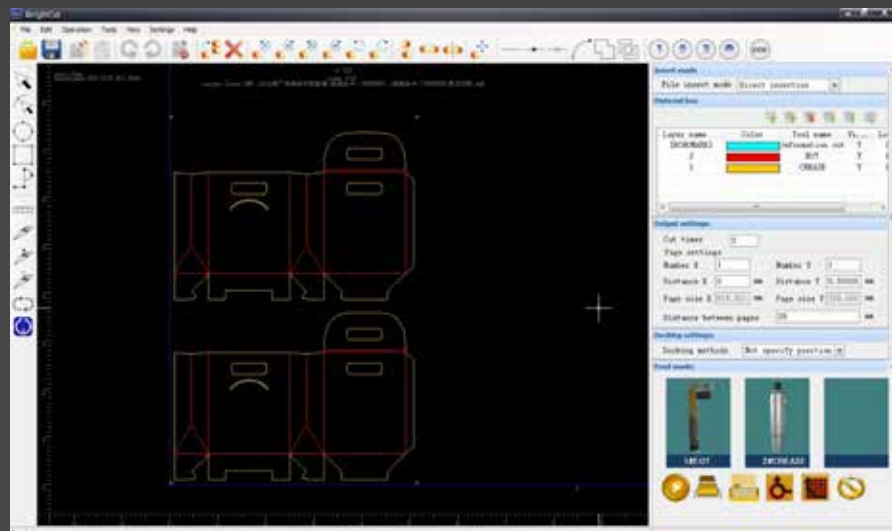
User can set the position of the cutting head when finishing the job.

User can set the pump to be automatically closed upon completion of the job.

### CUTTERSERVER CLOUD CONTROL CENTER

The PRO2600 delivers fast, accurate online support through the Cloud Service, including:

1. Remote fault diagnosis: users can receive assistance from a PRO2600 engineer.
2. Remote system upgrade: users can upgrade to the latest operating system through the Cloud Control Center.



Electronic Oscillating Tool with 1mm stroke for cutting soft and medium density materials.



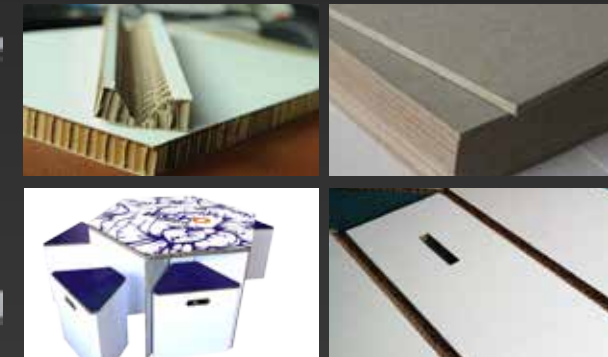
Driven Rotary Tool for cutting textiles



Universal Cutting Tool for through-cutting materials with thicknesses up to .196"; high speed and low cost.



The V-Cut Tool is perfect for producing complex structural designs from foam core or bonded materials. The tool can be set for cutting 5 different angles: 0°, 15°, 22.5°, 30°, 45°.



Kiss Cut Tool for cutting vinyl, foil, films, thin media, cardboard, textiles and other thin substrates.



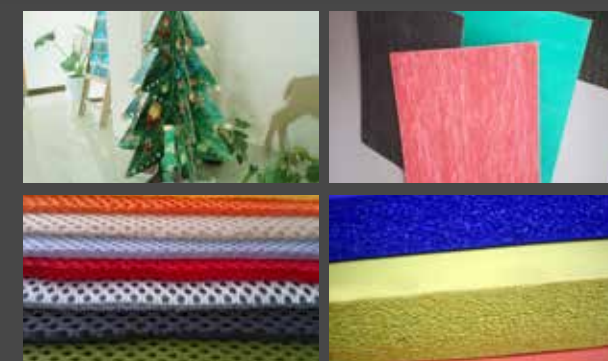
The Creasing Tool is used to produce creases on corrugated materials. Multiple tools allow the user to create a perfect crease on various materials.



The Router has a rotary speed up to 60,000 rpm. Delivering solid performance in a wide range of applications and substrates. The Router can also do precise engraving like the Kiss-Cut tool.

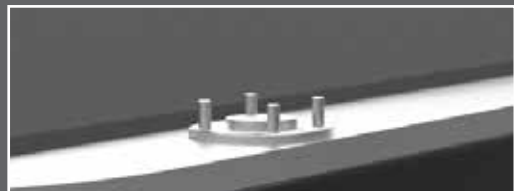


The Pneumatic Oscillating Tool is an air-driven device with a high oscillating frequency. The stroke, up to 8mm, is suitable for cutting rigid and high density materials up to 50 mm thick utilizing a specialized blade.



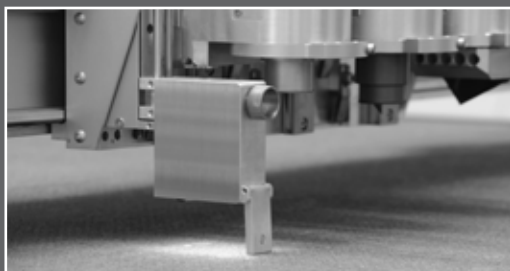
**AUTOMATIC KNIFE INITIALIZATION**

Cutting depth accuracy is controlled with displacement sensor through automatic knife initialization.



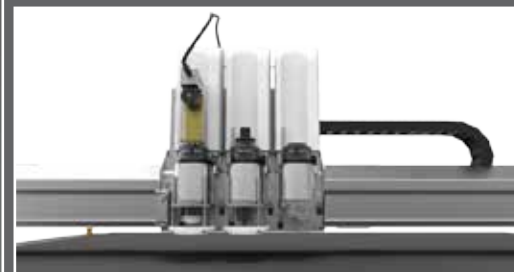
**PRECISE AUTOMATIC POSITIONING SYSTEM**

With a high precision CCD camera, the PRO2600 determines the precise position and registration for cutting different materials, resolving the issue of manual positioning deviation and print deformation.



**EFFICIENT CUTTING HEADS**

With a maximum cutting speed of 1.5 mm/sec, the PRO2600 increases production efficiency.



**CONTINUOUS CUTTING SYSTEM**

Intelligent conveyor system enables feeding, cutting and collecting finished work efficiently. The roll feed table option can cut longer pieces, reducing labor cost and increasing productivity.



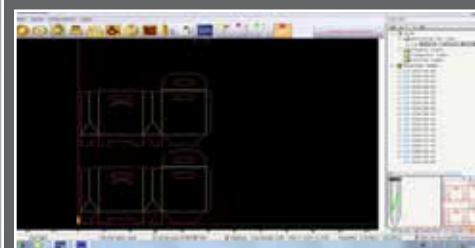
**AVIATION ALUMINUM TABLE**

Durable, zoned vacuum table



**MOTION CONTROL SYSTEM**

CutterServer makes the cutting process smooth, efficient and accurate.



**SAFETY DEVICES**

Multiple safety devices ensure the security of the operator.

