

HELLO

My name is: Jason Maïser

I am a/an: (Check all that apply)

- ☒ Industrial Design
- ☒ Interior Designer
- ☒ Engineer
- ☒ Graphic Designer
- ☒ User Interface Designer

- ☒ 3D Modeler
- ☒ Animator
- ☒ Texture/Lighting Artist
- ☒ Concept Artist

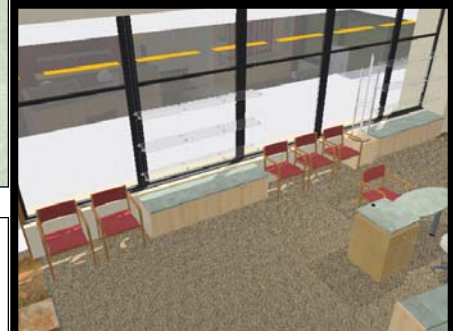
My Phone number is: 206-369-6667

My Email is: jemaïser@yahoo.com

University of Washington

Harbor View Medical Center in Seattle WA

Layout and renderings by **Jason Maiser** - 2009



Project Description: Created layout and design of the dispensary for the University of Washington's Harbor View Optometry Clinic which is located in Seattle WA. Layout, elevation drawings, and computer renderings were all created by Jason Maiser.

CD Player

By Jason Maiser - 2004

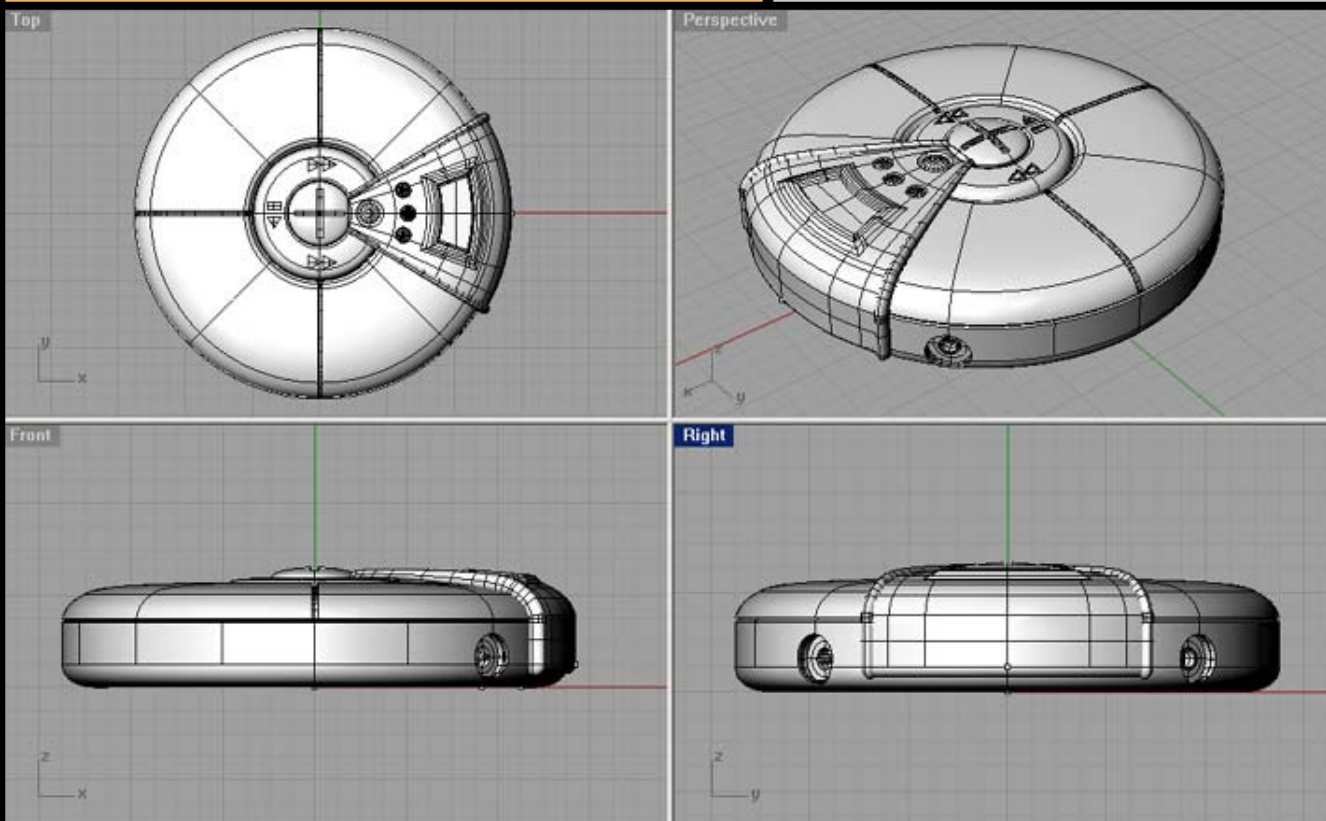


Image Details:

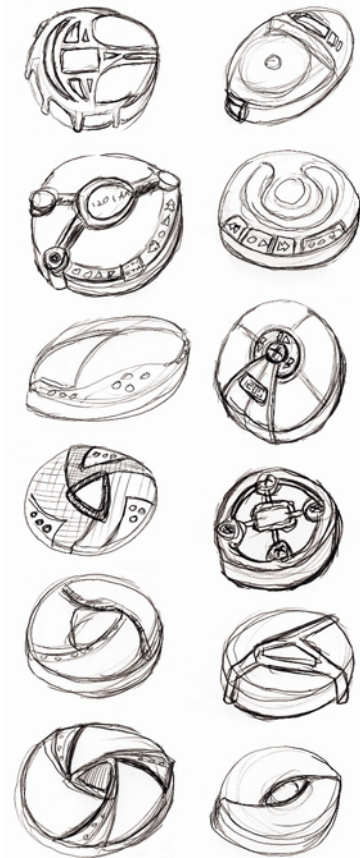
Image Modeled in Rhino 3.0

Image Rendered in Flamingo 1.0

Project Description:

This CD player utilizes control mapping to help the user know the location and functions of the buttons without requiring visual feedback. The central button allows the user to play, pause, fast forward, rewind or skip songs by rotating or tilting the main command button.

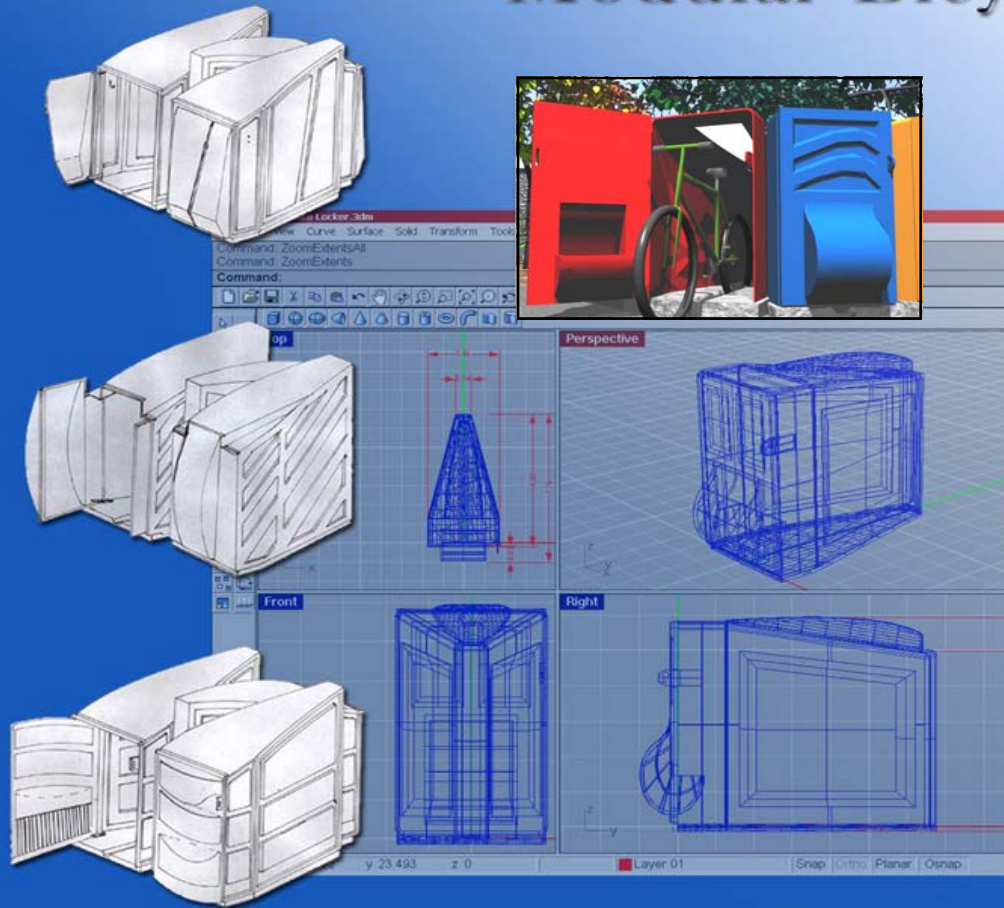
Thumbnail Sketches



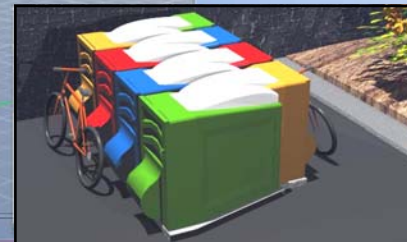
Rendering



Modular Bicycle Locker



Single Row of Lockers



Double Row of Lockers



Curved Arrangement

Jason Maiser - 2001

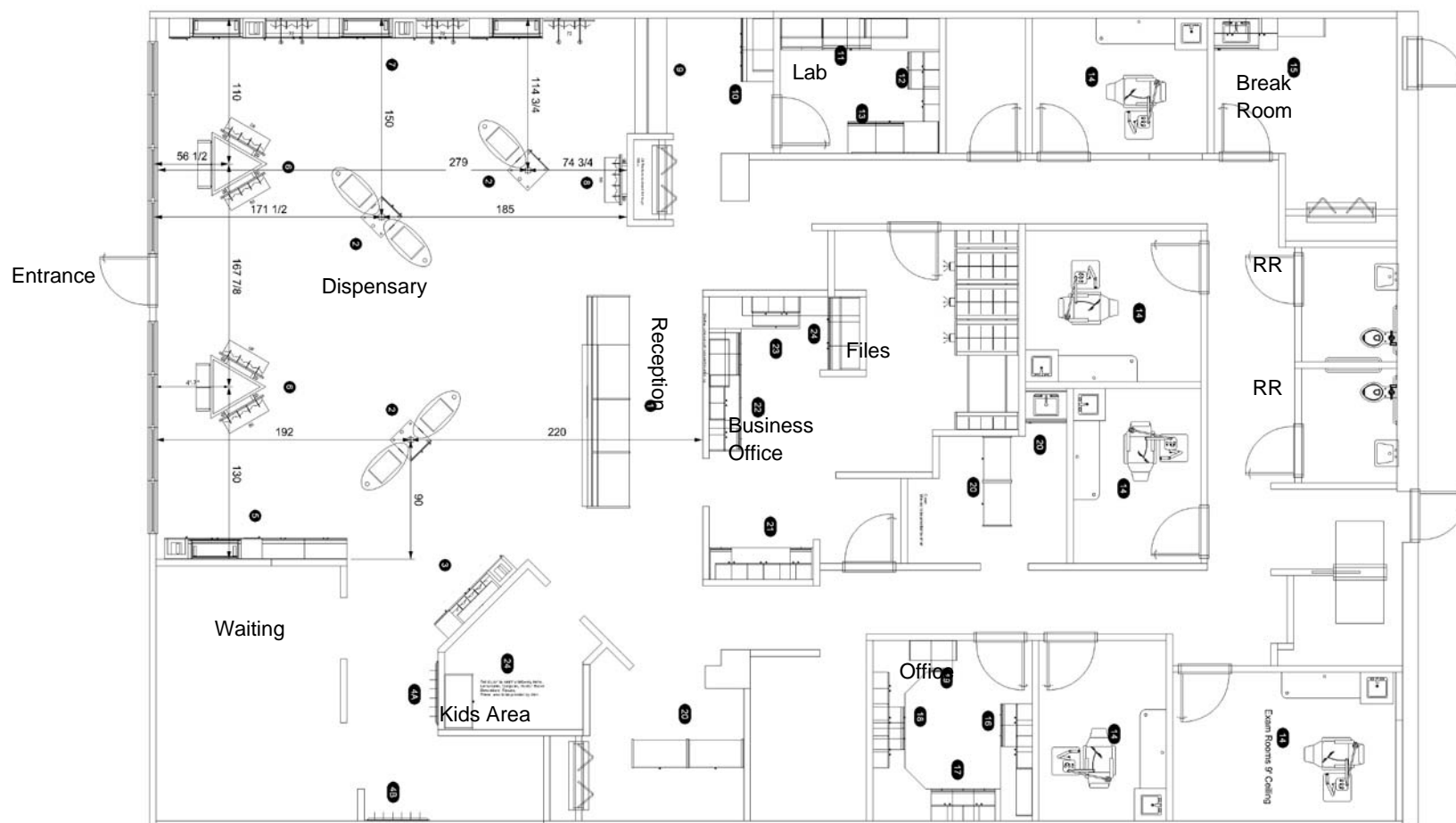
Image Details

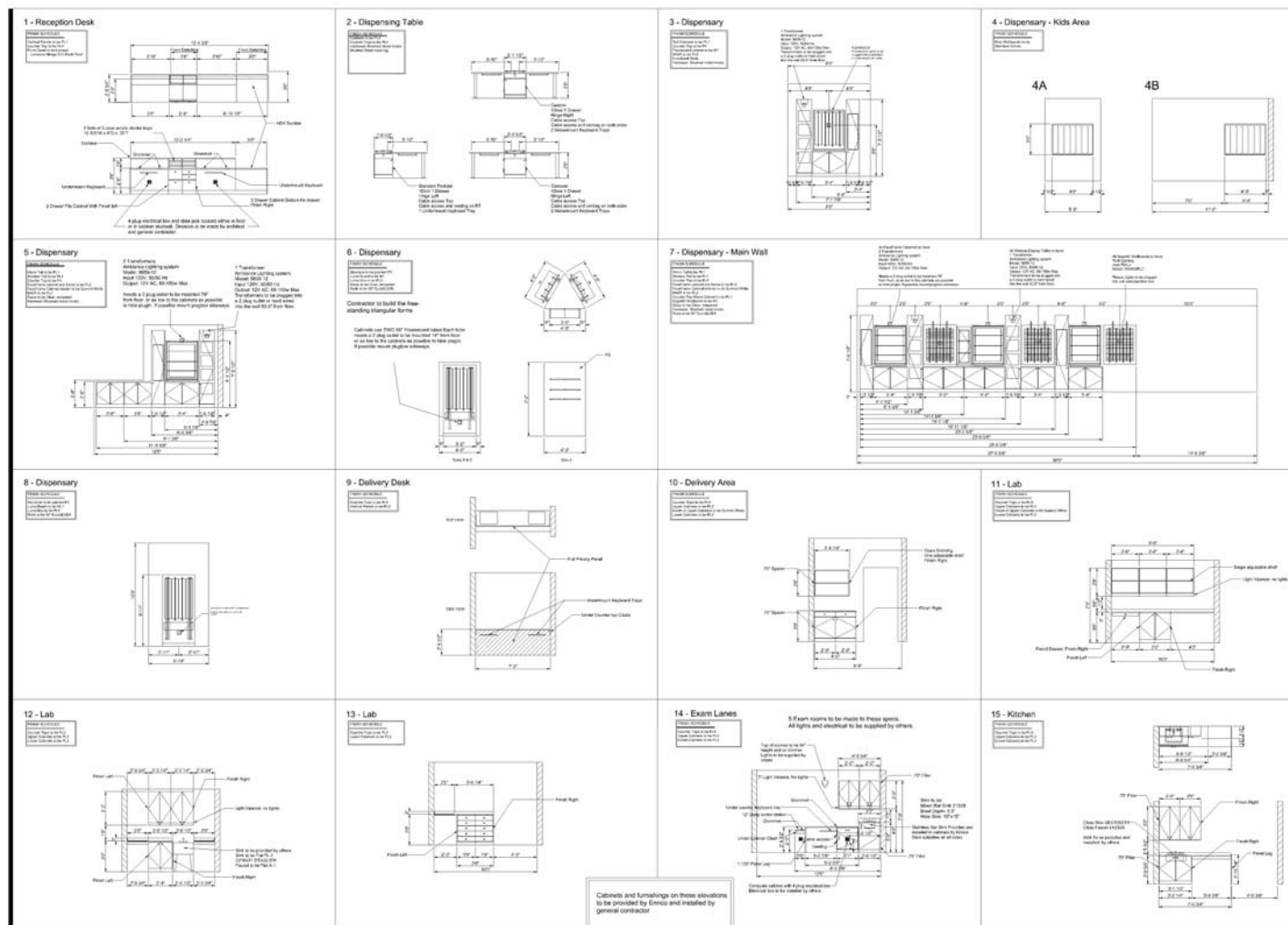
Image Modeled in Rhino 2.0

Image Rendered in Bryce 4.0

Project Description:

A modular Bicycle Locker was designed to be usable in institutional, commercial, and residential settings. The bike locker has room to securely store a helmet, book bag and basic riding gear. Knockdown style vacuum form panels make the bicycle locker inexpensive to manufacture and easy to ship.







4

Main Wall

The main wall uses a combination of Acrylic Rods and modular Aerial Flight System displays. The cabinets beneath each display is a small storage cabinet for holding cases and back stock for that display.

Item Pictured	Style	Frame Count
Luma Wall	Acrylic Rods	75 Each
Angle 90 Wallboard	Aerial Flight	Max 75 Each
Dispensing Table	Oval, Single	NA



5

Displays Near Reception

The main wall uses a combination of Acrylic Rods and modular Aerial Flight System displays. The cabinets beneath each display is a small storage cabinet for holding cases and back stock for that display.

Item Pictured	Style	Frame Count
Angle 90 Wallboard	Acrylic Rods	65 Each
Dispensing Table	Oval, Single	NA

Furniture Design

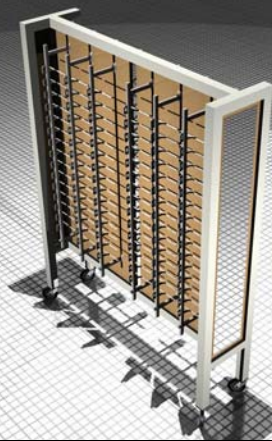
Renderings by Jason Maiser



Pedestal Display Boxes with Glass Tops



Locking Rotary Display Case



Rolling Display Cart



Custom Work Table



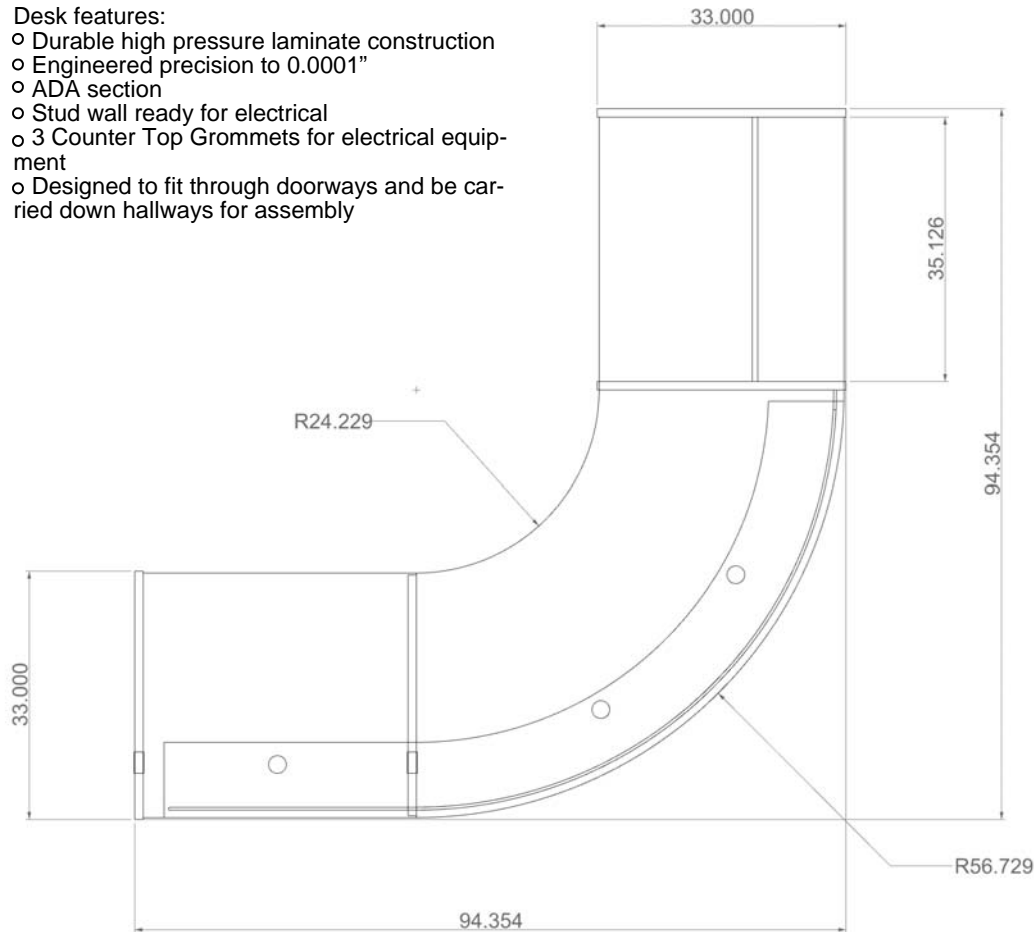
Free Standing Display Unit

Furniture Design

Design and engineering by Jason Maiser

Desk features:

- Durable high pressure laminate construction
- Engineered precision to 0.0001"
- ADA section
- Stud wall ready for electrical
- 3 Counter Top Grommets for electrical equipment
- Designed to fit through doorways and be carried down hallways for assembly



Curved Reception Desk



Front View



Back View

CHESS

BY JASON MAISER - 2009



Project Details:
Image Modeled in Rhino 4.0
Image Rendered in Brazil 1.0

Model Details:
65400 total triangulated polygons in model
11 Unique objects
1 hour render time

Render Details:
Chess Pieces are Wax Shader with Sub Surface Scattering
Chess Board is Porcelain with bump map
Background is HDRI map with reflected environment map