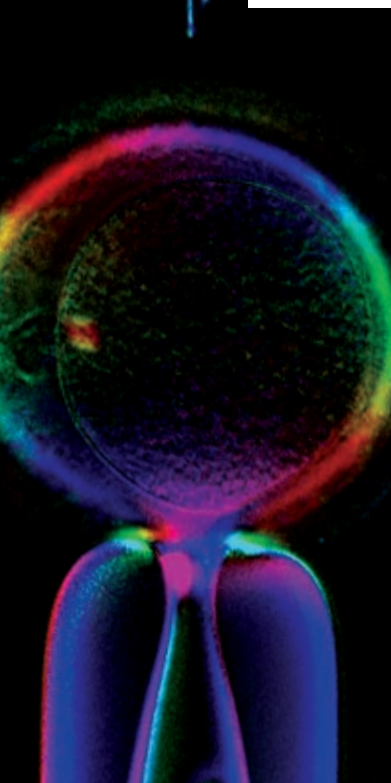




**IVF demands
dramatic results.**

**Now you can
get them.**





Success in the lab just got dramatically easier. Introducing the Oosight™ Imaging System.

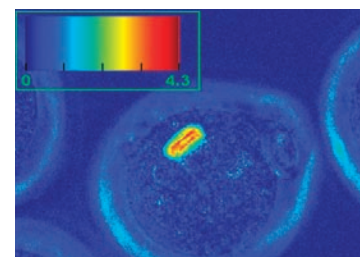
Affordable, fast, and easy to use. Success in the IVF lab depends on the successful fertilization and health of a living oocyte. With CRI's new Oosight Imaging System, you can take some of the guesswork out of IVF and increase

your chances of success. Studies show that an oocyte has significantly greater developmental potential when a spindle is present and the density of the inner layer zona pellucida is high. Oosight enables you to see and measure vital structures

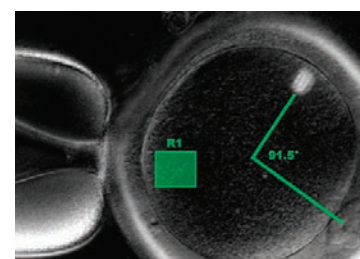
in the living oocyte, such as the spindle and multi-layered zona pellucida, with unprecedented brightness, clarity, and contrast, and without the need for harmful dyes or stains.

Oosight, the next generation of CRI's SpindleView™ system, provides real-time imaging, easy-to-use, single-click Windows™-based software, and a versatile design that is compatible with most modern computers and microscopes. Its optimized performance allows for easy integration into IVF and nuclear transfer protocols. It delivers a quick and effortless solution for the real-time detection and assessment of vital structures in the oocyte.

Choose from these three affordable Oosight imaging systems, including Oosight Ultra, an advanced user platform with a high-end ultra-sensitive digital camera and powerful measurement tools. Oosight is the right choice for a variety of applications, including Egg Grading, ICSI, Nuclear Transfer, and Egg Freezing Studies.



Pseudocolor overlay of retardance of a mouse oocyte. Note the spindle has a higher retardance than the rest of the oocyte. Absolute measurements of retardance can be used to correlate to outcome.



Human oocyte analyzed using the advanced software tools. Image was taken by B. Woodward, University of Nottingham, Nottingham, UK.

Increase the accuracy of ICSI.

The presence and location of the spindle during ICSI have been linked to developmental outcomes. Oosight is the only non-invasive imaging system available for accurately detecting the presence and location of the spindle when grading human eggs. Use it in assisted reproductive technology (ART) applications for imaging the meiotic and mitotic spindle. Capture morphological changes in living oocytes without the need for harmful stains. Assess changes in spindle parameters from oocyte to oocyte, and use the system to help guide your injections.

Perform nuclear transfer without staining.

With Oosight, you can remove the spindle in nuclear transfer techniques without using Hoechst dye DNA staining, thus minimizing damage to vital cytoplasmic organelles.

Monitor spindle changes in thawed oocytes.

The spindle is temperature-sensitive and very susceptible to damage during handling and freezing. Use the Oosight system to monitor the effects of temperature fluctuations from different oocyte freezing protocols.

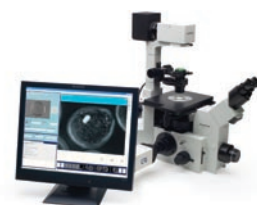
Measure the zona pellucida for improved outcomes.

The structure of the multi-layered zona has been linked to embryo developmental potential. Research has described a link between the structural density of the inner layer and developmental competence. Now, as never before, non-invasively assess the thickness, density and orientation of the zona using the advanced user tools available in the Oosight Ultra package.

All three Oosight imaging systems are optimized for your lab.

All three Oosight imaging systems are optimized for the ART laboratory and include a digital camera, liquid crystal optics, and software. The Oosight software program has been designed to meet the needs of the fast-paced ART laboratory, allowing for real-time viewing of the spindle and single-click image capture. Images are automatically saved in user-sessions in order to ensure that critical data are never lost. Sessions are designed for multi-user laboratories, allowing for structured storage of data using intuitive and well-organized menus.

- Assess Egg Quality
- Position the Spindle during ICSI
- Evaluate the Spindle
- Measure the Tri-Layered Zona Pellucida
- Clearly See the Spindle during Nuclear Transfer



Oosight Basic Imaging System

Our entry-level system, Oosight Basic includes the following image-acquisition software tools: live imaging in 3 modes (real-time Oosight, optical blinking, and standard video), digital zoom, image annotation, and image autosave. For full specifications, see the back cover of this brochure.



Oosight Meta Imaging System

Our mid-level system, Oosight Meta includes all of the tools in the Basic system in addition to the following advanced software tools: time-lapse imaging, distance calibration and measurements, angle measurements, pseudocolor overlay, vector mapping to show molecular orientation, area measurements, and hyperlink to ImageJ. Full specs on back cover.



Oosight Ultra Imaging System

Advanced users can upgrade to Oosight Ultra. The Ultra version includes all of the advanced software tools in addition to a high-sensitivity cooled CCD camera. Full specs on back cover.

Contact us today to learn more about Oosight by calling **1.800.383.7924** or by visiting **www.cri-inc.com/oosight**.

Oosight™ Imaging System specifications:

Optical

Wavelength of Operation: 546 nm
Spatial Resolution: Diffraction limited
Relay optics: 0.65x
(requires 1x C-mount attachment)

Electrical Controls

Power Source: Universal Serial Bus 2.0
(USB 2.0) to CPU

Image Acquisition

Image Output Format: BMP or TIFF

Optional Accessories

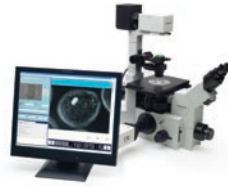
Computer Platform: PC-compatible,
Pentium™-class CPU with
Microsoft Windows™ XP Professional
Monitor: 17" LCD

Microscope Compatibility

The system is compatible with the following
inverted microscopes with camera ports:

- Leica DM-IRB and DM-IRE
- Nikon Diaphot™ 200/300, TE-300
and TE-2000
- Olympus IX-Series
- Zeiss Axiovert™ 200

If your microscope model is not shown,
please contact CRI for compatibility.



Oosight Basic

Camera Features:

8-bit Uncooled CCD Sensor
1024 x 1390 pixels
4.83 μm (micron) pixel size
1/2" optical format
Binning

Software Features:

Image acquisition
Live Imaging in 3 Modes:
Real-time Oosight
Optical Blinking
Standard Video
Digital Zoom
Image Annotation
Image Autosave



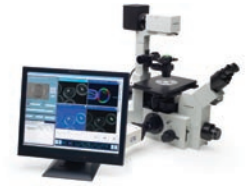
Oosight Meta

Camera Features:

8-bit Uncooled CCD Sensor
1024 x 1390 pixels
4.83 μm (micron) pixel size
1/2" optical format
Binning

Software Features:

Image acquisition
Live Imaging in 3 Modes:
Real-time Oosight
Optical Blinking
Standard Video
Digital Zoom
Image Annotation
Image Autosave
Time-lapse Imaging
Distance calibration and
measurements
Angle measurements
Pseudocolor overlay
Vector mapping to show
orientation
Multiple area measurements
(free draw or predefined
shapes)
Hyperlink to ImageJ



Oosight Ultra

Camera Features:

12-bit Cooled CCD Sensor
TE-cooled to 10°C
1024 x 1390 pixels
6.45 μm (micron) pixel size
2/3" optical format
Binning
ROI

Software Features:

Image acquisition
Live Imaging in 3 Modes:
Real-time Oosight
Optical Blinking
Standard Video
Digital Zoom
Image Annotation
Image Autosave
Time-lapse Imaging
Distance calibration and
measurements
Angle measurements
Pseudocolor overlay
Vector mapping to show
orientation
Multiple area measurements
(free draw or predefined
shapes)
Hyperlink to ImageJ

About CRI

Cambridge Research & Instrumentation, Inc. (CRI) is the leading provider of liquid crystal-based imaging and optical processing solutions to the life science, industrial metrology, and communications markets. CRI leverages decades of expertise in liquid crystal and opto-electronic design and manufacturing, as well as imaging applications, to bring our customers an unprecedented ability to image, separate, and measure with sensitivity and flexibility. Our talented team is highly innovative, as evidenced by our growing portfolio of over 60 pending or issued patents.

Your local CRI agent or distributor is:

Cambridge Research & Instrumentation, Inc.

CRI 35-B Cabot Road
Woburn, MA 01801 USA

E-mail: sales@cri-inc.com
Toll-Free (USA): 1.800.383.7924
Direct (Worldwide): +1.781.935.9099

