

Desk

DESIGN STUDENTS

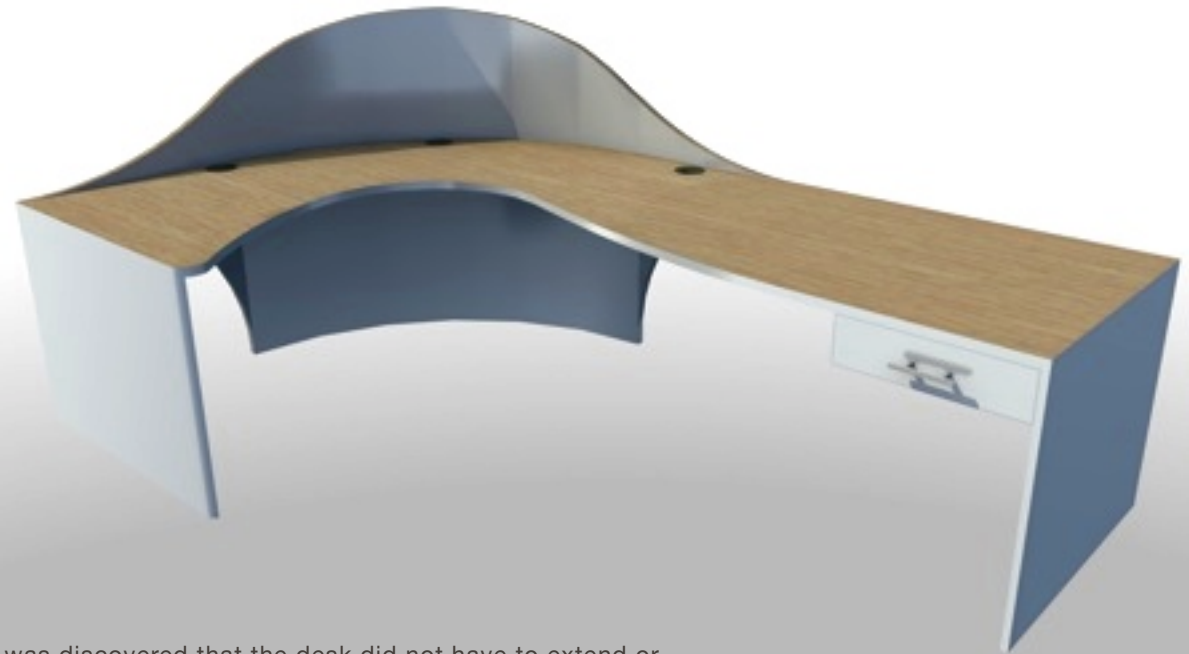
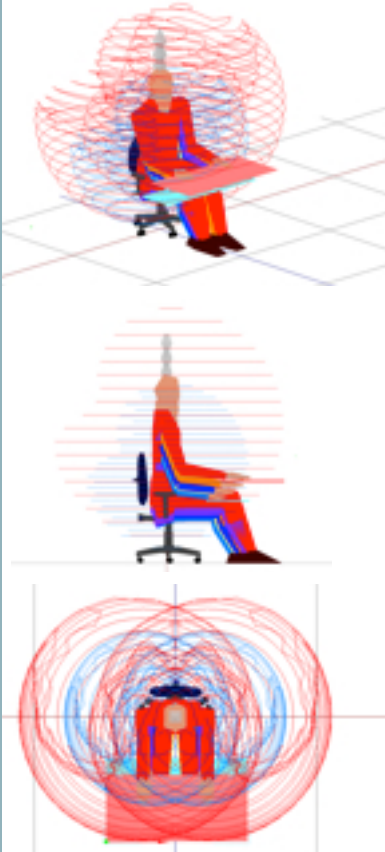
Ergonomic Desk



DESIGN

The shape of the desk was determined through observation on how students work, and by observing how they separate desks into 'areas' of work and other social uses. Some parts of the desk are used only for one task. e.g. drawing. The long length gives room for different tasks to take place, while the curve moves the user into the workspace and gives easier reach to all areas. The smaller side provides storage space, for a computer tower, notes or a coffee cup.

The size was determined using SAMMIE and a range of humans sittings on a chair in an upright position, the limits of reach and knee height were measured and applied to the desk. The upright posture does not give accurate reach data, but works as a starting point for the design. Data from *Fitting the task to the human: Kroemer and Grandjean* was also used to help define the desks dimensions.



It was discovered that the desk did not have to extend or adjust to accommodate all users, as long as a chair was provided that had an adjustable height of 380 - 540mm.



The desk has 3 cable access holes spread out along the walled curve. This permits cable routing wherever the computer is positioned.

A single draw provides space for drawing equipment and is positioned out of the way at the end of the desk where under desk space is used least.



The raised back gives the user privacy and is made of magnetic whiteboard material giving the user space for fixing notes or memos, or simply writing notes.