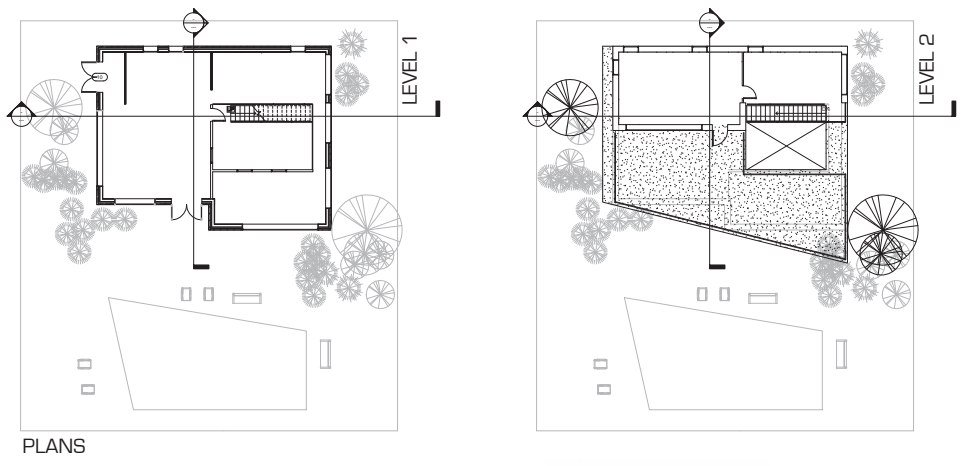
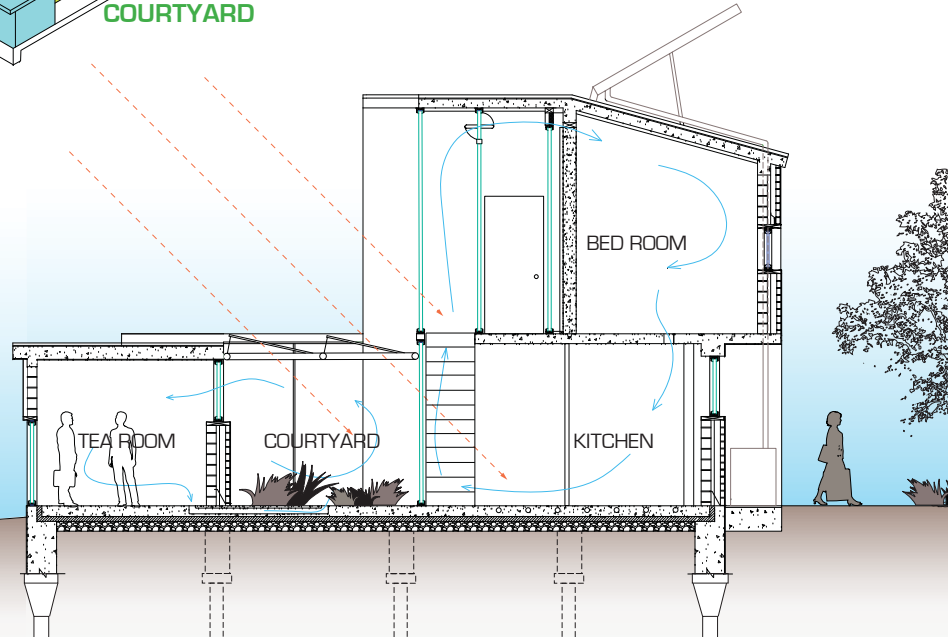
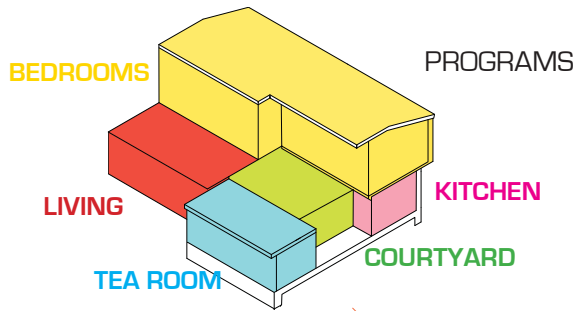


**COURTYARD HOUSE, MI** | Building Technology Research Project



The project was part of design research at the Environment Technology Lab. The program was a single family vacation home in northern Michigan. The house consists of a large living-kitchen area and a tea room separated by a courtyard on the first floor and two large bedrooms on the second floor. The house faces lake Michigan and is located on a hill slope. In terms of daylight penetration and air circulation, the courtyard plays a central role in the overall design. The interior of the house is minimal and consists primarily of concrete and wood. The geometry is primarily derived from the programmatic requirements and sun angles. This project entailed the production of construction drawings for the calculation of material estimates and construction cost for the clients. I include this project in the portfolio primarily to highlight my skills in creating technical drawings and details in CAD.



Final Revit Model  
Street Perspective